

ARCADIA

Mercy Health
2-10 Clarke Street, Abbotsford

Prepared for Mercy Health
May 2025

We respectfully acknowledge the Traditional Custodians of the lands where we live and work. We acknowledge their unique ability to care for Country and deep spiritual connection to it. We honour Elders past, present and emerging whose knowledge and wisdom has and will ensure the continuation of cultures and traditional practices.

Rev A	Issued 5th July 2024	Authorised by ER
Rev B	Issued 01 August 2024	Authorised by MY
Rev C	Issued 05 August 2024	Authorised by MY
Rev D	Issued 12 December 2024	Authorised by NG
Rev E	Issued 20 January 2025	Authorised by NG
Rev F	Issued 07 May 2025	Authorised by NG

Arcadia Melbourne
Level 22, 459 Collins Street, Melbourne VIC 3000
P 03 9491 7300
E melbourne@arcadiala.com.au
arcadiala.com.au
@arcadialandarch
Arcadia Landscape Architecture VIC Pty Ltd
ABN 62 642 196 469

Mercy Health Retirement Site Location

The Mercy Health Abbotsford project is located along the western boundary of the Abbotsford Convent Precinct. The Abbotsford Convent precinct presents a mosaic of landscapes and land-uses within proximity to the Yarra River riparian corridor, including the Convent's Heritage Gardens and the Collingwood Children's Farm.

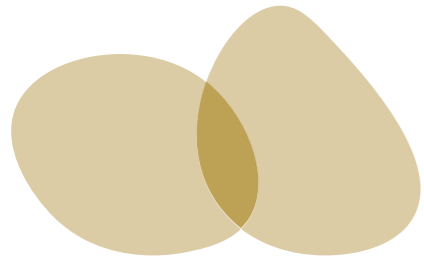
A Master Plan for the Abbotsford Convent Precinct (prepared by Hassell - 2021) informs the landscape response proposed for the Mercy Health Abbotsford project, in addition to City of Yarra guidelines.

KEY
 **SITE**

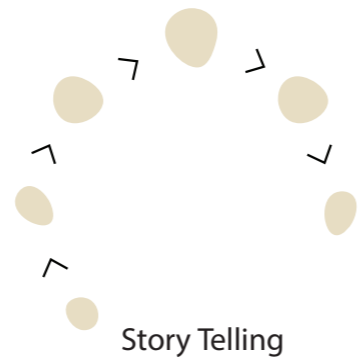


Abbotsford Convent Masterplan

Design Principles



Community



Story Telling

The Design Principles



Community

The Convent is an arts, cultural and creative organisation that reflects and supports a diversity of people and its specific place. It brings together a wide range of users as a place of respite as well as cultural production and expression. The spatial infrastructure of the Convent will be designed to foster interaction between the various visitors.

Visiting during the daytime, or evening for specific hospitality or retail offerings.

- **Arts and entertainment seekers**
Experiencing curated events and entertainment at specific times, visiting for performances and gallery opening, or festivals.
- **Tenants**
The community that brings the Convent to life daily, using the space to work and create.
- **Venue hirers**
Long-term patrons of the Convent, who regularly use the building spaces to create and gather their communities.
- **Donors**
Those who may not visit the physical site, or use the digital platforms, regularly but have a vested interest in the longevity and continuity of the Convent as an institution.
- **Wurundjeri Traditional Owners**
Both traditional owners and tenants, the Convent represents their office location, an opportunity to connect to Country within the city and a place where others can engage in Wurundjeri culture and history.



Enhancement

All the Convent spaces, internally and externally, will have a clear definition and character; visiting the Convent will be a sequence of diverse and distinct experiences. This will be achieved by:

- Editing existing spaces to amplify their existing character, or
- Creating new spatial qualities where they are currently lacking
- Retaining and exposing the layers of history and use, including pre-colonial and contemporary uses
- Conserving and restoring the heritage fabric
- Optimising the spaces for their specific uses congruent with their spatial character.



Enabler

The existing uses and revenue sources of the Convent will be expanded on, to increase the Convent's resilience as an entrepreneurial organisation and to create new opportunities for its tenants and community. This will be achieved by:

- Providing infrastructure to accommodate new activities
- Attracting a rich diversity of tenants, creative partners, and hirers that share the Convent's values and enrich the community
- Developing new business models and revenue streams around the visitor experience and the use of spaces
- Growing and deepening audience engagement with arts, culture and initiatives that connect audiences with the Convent's creative community and its output.



Journeying

The Convent will continue to be a place where people can find their own way, be it to a destination or as an exploration:

- Advocate for improved access from all directions by all modes of transport
- Provide reference points to simplify intuitive wayfinding
- Allow for exploration and discovery of spaces, people and activities
- Enhance the nature experience as an engaging, playful part of the Journey
- Welcome visitors with an arrival experience and an opportunity for orientation
- Separate groups to concurrent events to improve way finding for each group
- Create connections to support journeys where required to support journeys through the Convent
- Improve connection with the context, including the river landscape.



Story Telling

The Convent will further enhance its role as a place of connection, sharing, display and interpretation through:

- The numerous layers of the past, the people, the activities and the many perspectives and experiences
- The possible futures, the ideas and practices that our society might adopt as they are explored by members of the Convent community
- The multitude of people, cultures and voices that can be expressed and developed within the Convent
- The artworks, products and services created, exhibited, presented and produced at the Convent
- The place as it forms the inspiration and context for many of the art works and experiences developed specifically for and in the Convent.



Activation

The Convent's indoor and outdoor spaces will support and inspire different activities and interpretations over time by:

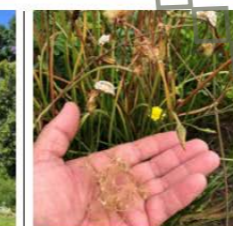
- Providing infrastructure for a wide and continuously evolving range of multi arts and multi-uses from spaces for workshops and conferences through to markets, concerts and exhibitions
- Creating opportunities to sit and dwell, supported by shade and amenities, to support passive, recreational use
- Encouraging playfulness and physical engagement with the spaces
- Creating opportunities for artistic interpretation of the spaces, including light, sound, touch and smell
- Supporting internal and external spaces with the appropriate infrastructure to enable exhibitions and installations
- Enabling spaces of different scales to be sectioned off temporarily for particular activities or hire's
- Ensuring space can be reached for service access and the set-up and take-down of events.



Country

The Convent will demonstrate 'caring for Country' by:

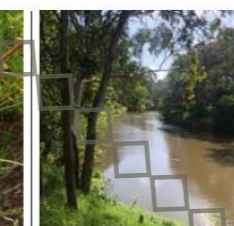
- Embedding ongoing consultation and engagement with the Wurundjeri Woi Wurrung Cultural Heritage Aboriginal Corporation into the Convent's development and experiences
- Utilising Indigenous horticulture expertise and workforce
- Reflecting endemic planting
- Understanding the seven seasons of the Wurundjeri Woi Wurrung Country
- Recognising that Country includes soils, sky, material, people, sounds, smell and



Biodiverse

The Convent will protect and conserve ecological values and create new ecosystems by:

- Protecting habitat trees
- Conducting weed removal
- Promoting restorative planting proposals within River Zone, in collaboration with adjoining land owners
- Producing regenerative and biodiverse planting proposals elsewhere
- Creating new urban ecosystems of benefit to a range of species to ensure a diversity of species.



Connected

The Convent will connect urban habitats and the Convent to wider landscape by:

- Reflecting the river and parkland setting
- Enhancing connections along river corridor, in collaboration with adjoining land owners
- Creating a biodiverse connection through the heart of the Convent
- Connecting tree canopies.



Unexpected

The Convent will be diverse, varied and unexpected through:

- A mosaic of landscape outcomes
- A mosaic of collaborators and designers
- Maximum diversity of plant species (common, rare, native, exotic, etc)
- An experience unlike anywhere else in Melbourne.



Layered

The Convent will connect people, stories, culture and heritage to nature by:

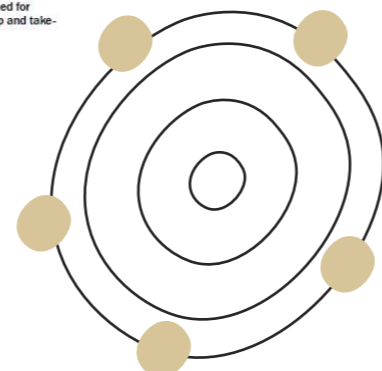
- Promoting well-being through connection to nature
- Telling stories through the sites, smells, textures of plants
- Connecting to built form, nature ties the Convent together
- Reflecting all cultures through planting
- Not revealing all at once, inspiring return visits.



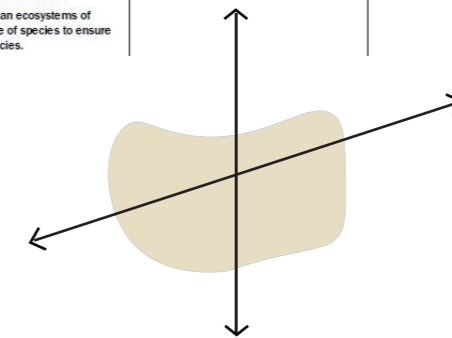
Beautiful

The Convent will have nature that is both artistic and educational that is:

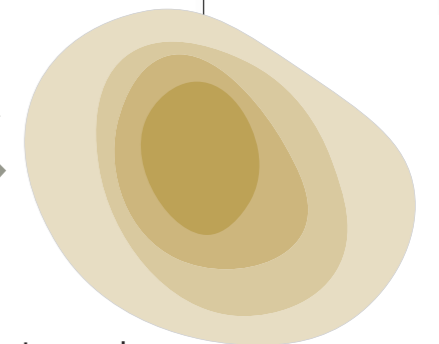
- Inspiring awe
- In constant change with the seasons
- On show, and a destination
- Utilising planting design as an art form.



Country



Connection



Layered

Journey

Abbotsford Convent Masterplan

Design Principles



A mosaic of landscapes



Deliberate Zoning



Orientation & exploration



Storytelling



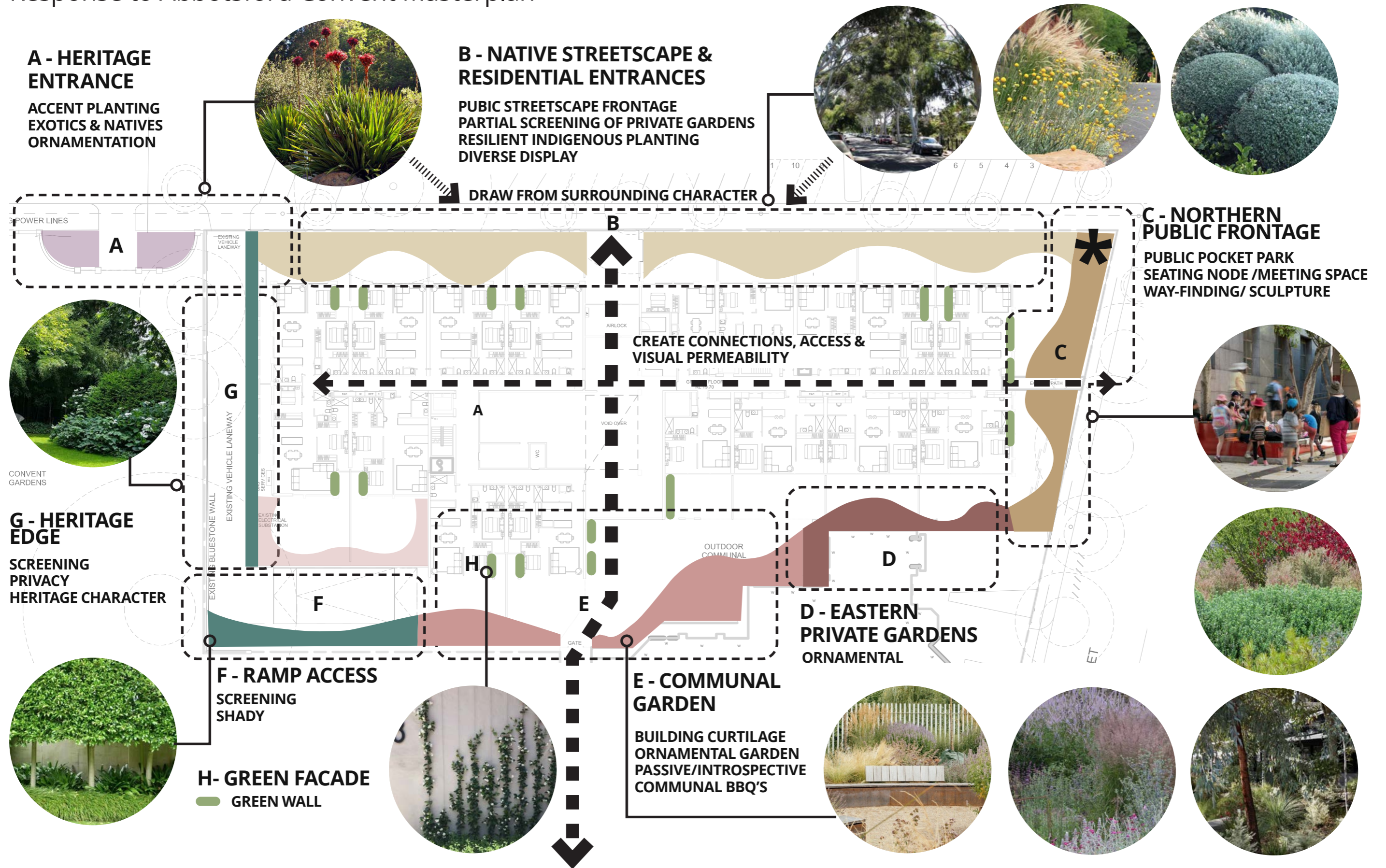
Sustainable development



Defined projects & flexible delivery

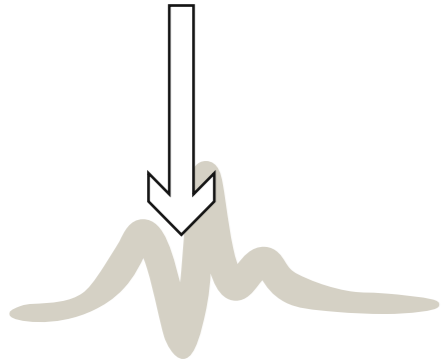
Mercy Health Abbotsford

Response to Abbotsford Convent Masterplan



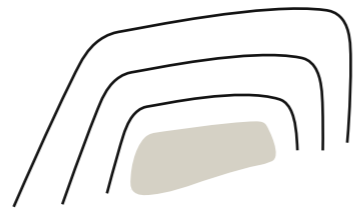
Mercy Health Abbotsford

Landscape Principles



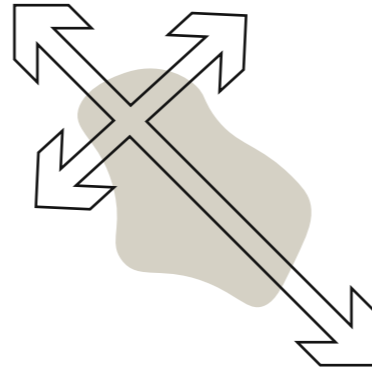
Design Integration

- / Stitch the residential landscape in to the fabric of the adjacent Abbotsford Convent and wider neighbourhood character.
- / Extend and draw upon the in the unique Yarra Bend Wurundjeri Country.
- / Stitch into the streetscape using responsive design elements and materials.



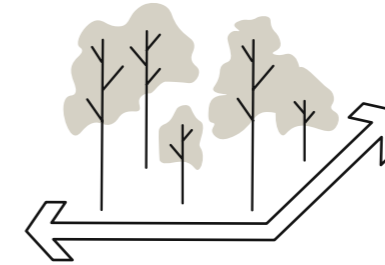
Arrival Experience

- / Create a sense of invitation to the convent precinct, enhance and punctuate the overall journey experience.
- / Create a sense of welcome and arrival for residents and visitors to the accommodation.
- / Enhance the church arrival experience and landscape curtilage.



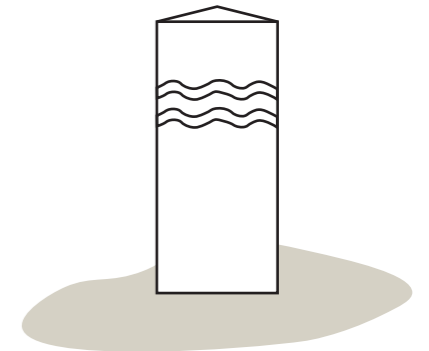
Access and Circulation

- / Provide clear and legible routes and permeability around the precinct.
- / Provide visual access to architectural features including the convent spire and Good Shepard church.
- / Provide active views for residents, encourage dwelling where appropriate to extend visit lengths and dwell times.



Streetscape & Vegetation

- / Enhance surrounding streetscapes and the pedestrian experience.
- / Retain resident privacy while provide active frontages.
- / Borrow from existing materials palette.



Navigation and Wayfinding

- / Sculptural installations could form key navigation or nodal gathering points at key locations or entry points.
- / Opportunity for some formal wayfinding signage, to assist with navigation throughout the Abbotsford Convent precinct.

Mercy Health Abbotsford Landscape Concept - Ground Level

CLARKE STREET

Tree number T-16 & T-17 -
Refer to arborist report for further
information.

ABBOTSFORD CONVENT
HERITAGE GARDEN

Permeable steel palisade
style fence to match
existing bluestone fence
height with bluestone
plinth, aligned to extent of
convent entryway.



ABBOTSFORD CONVENT

GOOD SHEPHERD CHAPEL

ST HELIERS STREET



Legend

- 1 Concrete seating wall
- 2 Sculptural/ play elements
- 3 Amphitheatre seating
- 4 Shared BBQ's
- 5 At grade garden bed with integrated seating
- 6 Flexible/ loose furniture
- 7 Sawn bluestone paving
- 8 Bluestone picher paving to existing driveway
- 9 Garden bed with under-storey planting
- 10 Asphalt ramp
- 11 Permeable feature fencing
- 12 Green wall facade with vertical trailing
- 13 4x Bike hoops / 8 bicycle parking spaces
- 14 2x proposed trees to replace the removed trees T1 and T20 along St Heliers Street

Mercy Health Abbotsford

Landscape Concept - Ground Level Communal Space

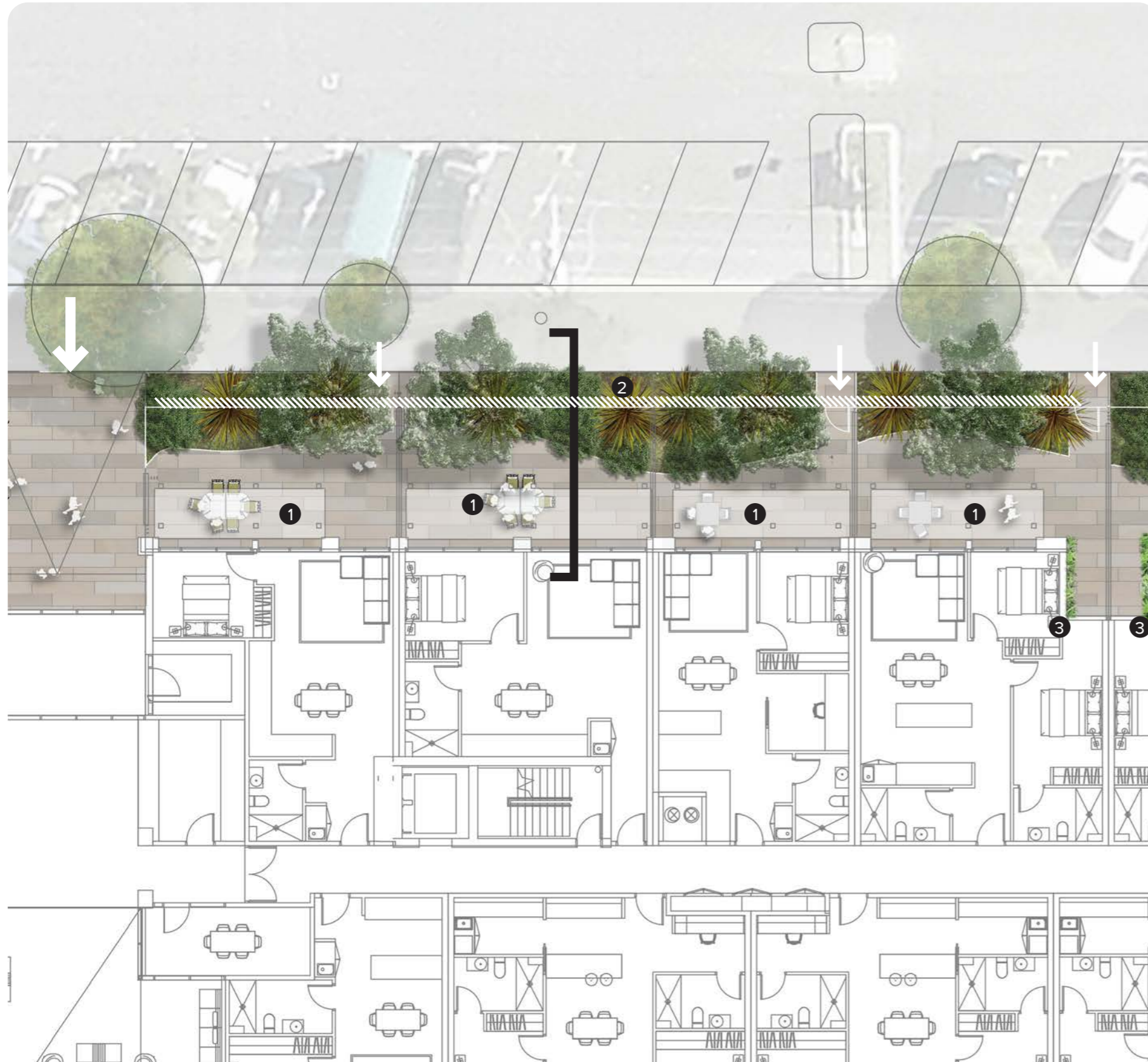


Legend

- ① Integrated seating
- ② Communal BBQ's
- ③ Loose furniture and seating
- ④ Green wall facade with vertical trailing

Mercy Health Abbotsford

Landscape Concept - Ground Level Clarke Street Gardens

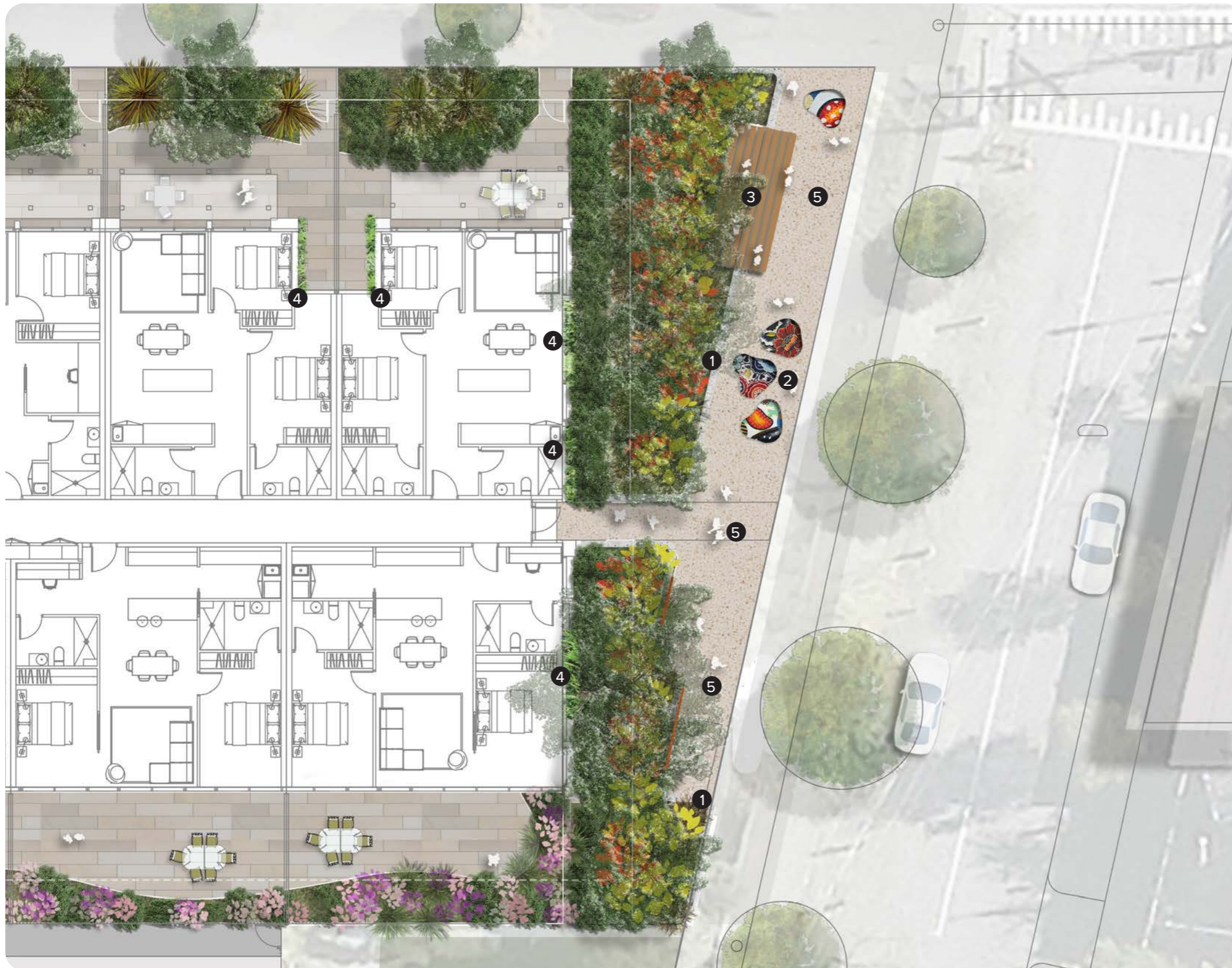


Legend

- ① Private garden terraces
- ② Fence line
- ③ Green wall facade with vertical trailing

Mercy Health Abbotsford

Landscape Concept - Ground Level St. Heliers Street Activation



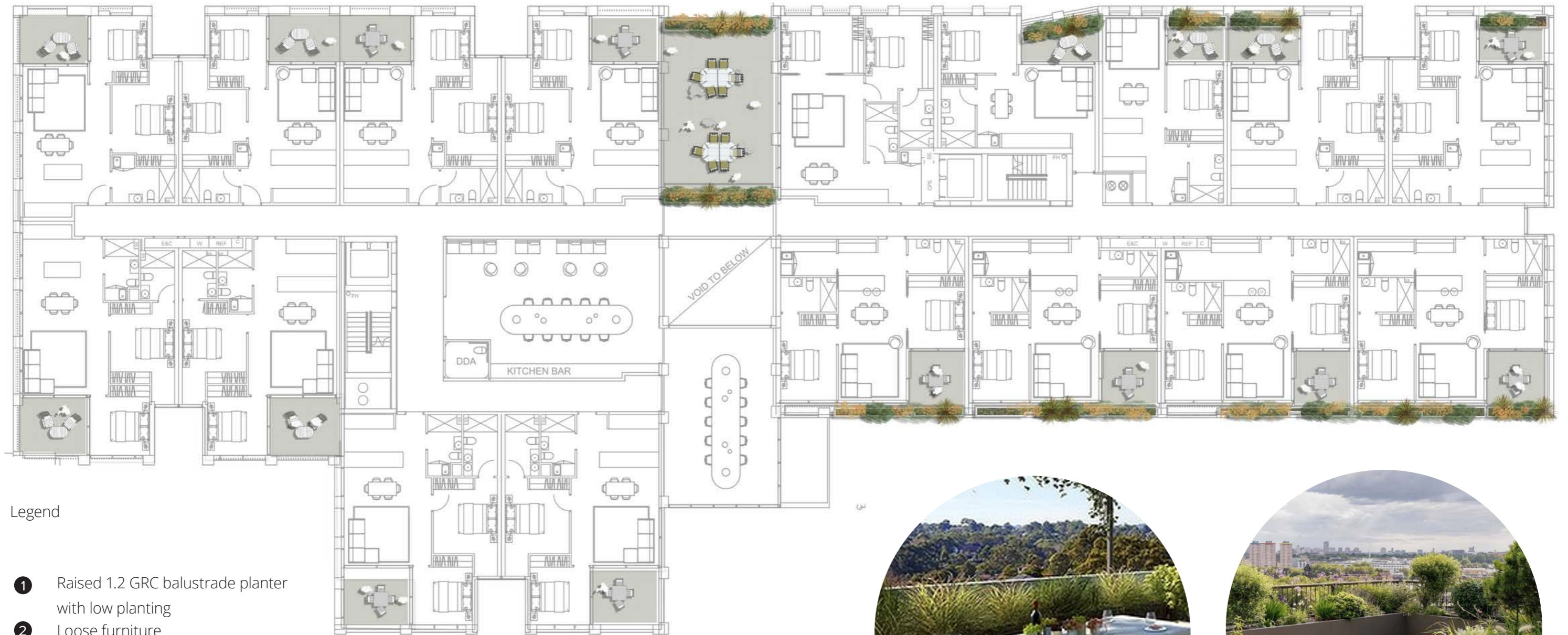
- Potential pop up art space for display
- Potential wayfinding signage to the Abbotsford Precinct

Legend

- ① Concrete seating wall
- ② Sculptural/ play elements
- ③ Amphitheatre seating
- ④ Green wall facade with vertical trailing
- ⑤ Bonded aggregate pavement to arborist requirements

Mercy Health Abbotsford

Landscape Concept - Level 1



Legend

- ① Raised 1.2 GRC balustrade planter with low planting
- ② Loose furniture
- ③ Pre-cast concrete or stone unit paving on pedestals
- ④ Shared terrace



Mercy Health Abbotsford

Landscape Concept - Level 2

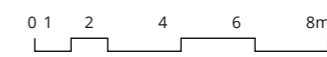


Legend

- ① Raised 1.2m GRC balustrade planter with low planting
- ② Loose furniture
- ③ Pre-cast concrete or stone unit paving on pedestals



Raised Edge Planter - Section



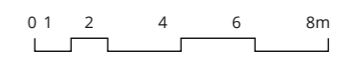
Mercy Health Abbotsford

Landscape Concept - Level 3

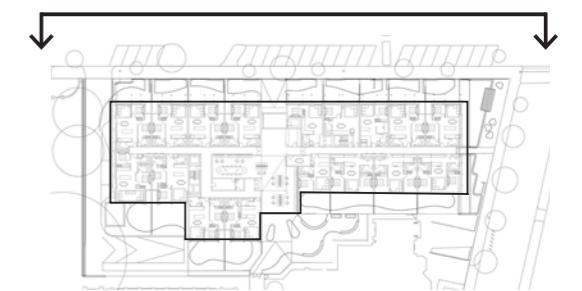


Legend

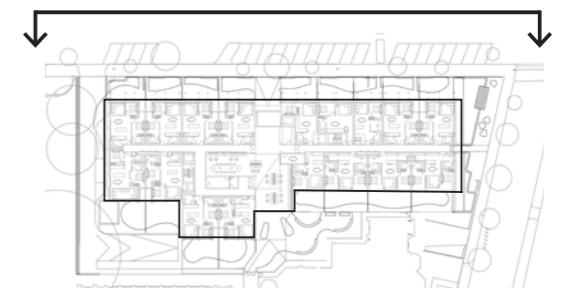
- 1 Raised 1.2m GRC balustrade planter with low planting
- 2 Loose furniture
- 3 Pre-cast concrete or stone unit paving on pedestals



Clarke Street Proposed Landscape Elevation



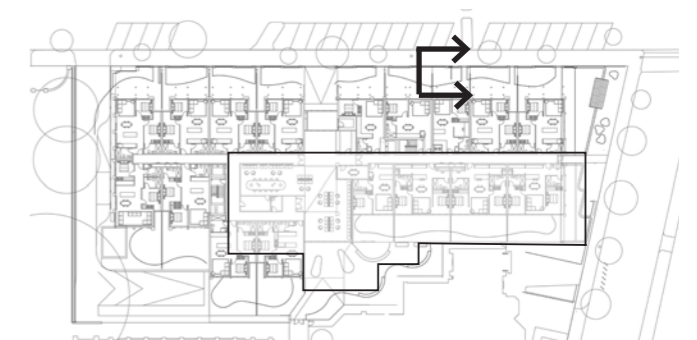
Clarke Street Proposed Landscape Elevation



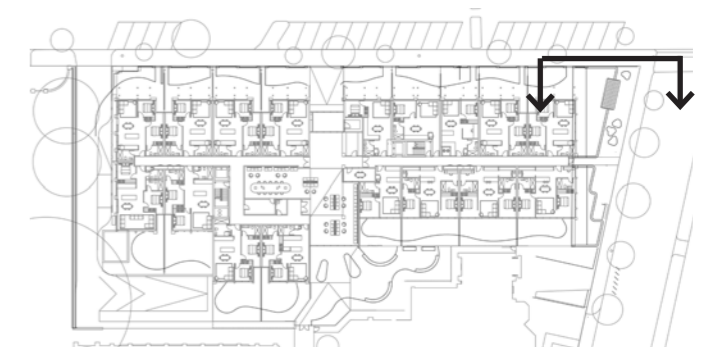
Clarke Street Proposed Landscape Section



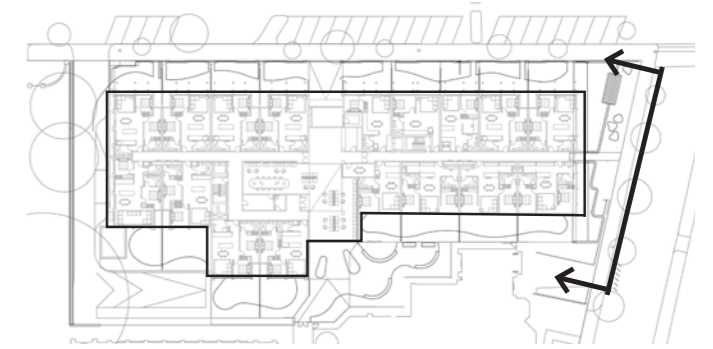
Fence wall materiality



Clarke Street / St. Heliers Street Proposed Landscape Elevation



St. Heliers Street Proposed Landscape Elevation



Indicative Materials Palette

Pavements



Pavers



Sawn Bluestone Pavers



Stone Paving on Pedestal



Bonded aggregate pavement

Walls



Concrete Seating Walls

Fixtures & Furniture



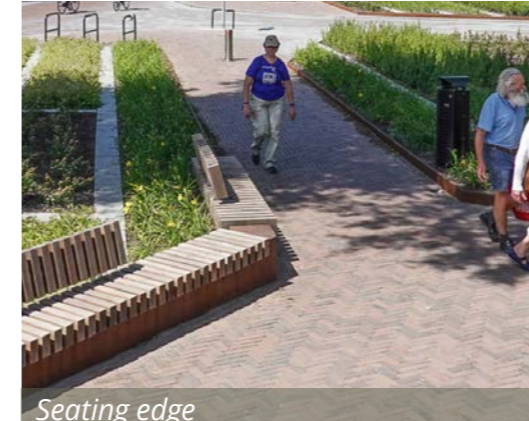
GRC planter boxes



Loose Furniture



Sculptural Play/Seating Elements



Seating edge

Greening



Garden Bed

Fencing



Bluestone



Brick

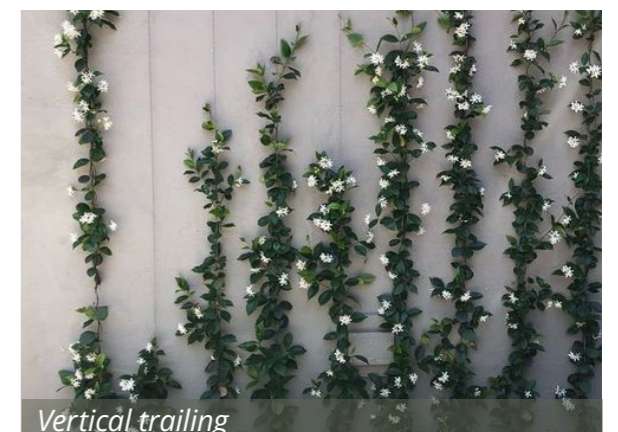


Steel or Aluminium

Greening



Cascading Planting



Vertical trailing

Indicative Planting Palette



Indicative Plant Schedule

TREES & PALMS			
<i>Acacia implexa</i>	Lightwood	15 x 7	45L
<i>Acer rubrum</i> 'Autumn Red'	Red Maple	25 x 10	45L
<i>Brachychiton populneus x acerifolius</i> 'Bella Donna'	Bella Donna Brachychiton	6 x 4	45L
<i>Bursaria spinosa</i>	Sweet Bursaria	3 x 2	45L
<i>Elaeocarpus reticulatus</i> 'Prima Donna'	Blueberry Ash	9 x 4	45L
<i>Eucalyptus leucoxylon ssp. Connata</i>	Yellow Gum	20 x 20	45L
<i>Eucalyptus melliodora</i>	Yellow Box	30 x 25	45L
<i>Ficus microcarpa hillii</i> 'Flash'	Ornamental Fig	8 x 4	45L
<i>Gleditsia triacanthos inermis</i> 'Sunburst'	Golden Honey Locust,	10 x 10	45L
<i>Hakea laurina</i>	Pincushion Hakea	8 x 4	45L
<i>Melaleuca ericifolia</i>	Swamp Paperbark	9 x 3	45L
<i>Laurus nobilis</i> 'Miles Choice'	Bay Laurel	8 x 4	45L
SHRUBS & ACCENTS			
<i>Acacia</i> 'Mini Cog'	River Wattle	1 x 1	140mm
<i>Adenanthos sericeus</i> 'Baby Woolly Bush'	Dwarf Woolly Bush	1 x 1	140mm
<i>Arthropodium cirratum</i>	New Zealand Rock Lily	1 x 1	140mm
<i>Callistemon sieberi</i> 'Sugar Candy'	River Bottlebrush	5 x 5	140mm
<i>Correa alba</i>	White Correa	2 x 1	140mm
<i>Correa glabra</i>	Rock Correa	3 x 3	140mm
<i>Doryanthes excelsa</i>	Gynea lily	4 x 3	140mm
<i>Eremophila nivea</i>	Emu Bush	2 x 2	140mm
<i>Grevillea rosmarinifolia</i>	Rosemary Grevillea	1.5 x 2	140mm
<i>Leptospermum lanigerum</i>	Woolly Tea-tree	6 x 3	140mm
<i>Leucadendron salignum</i> 'Cheeky'	Conebush	1 x 1	140mm
<i>Ligularia reniformis</i>	Tractor Seat	1 x 1	140mm
<i>Lythrum salicaria</i> 'Robert'	Loosetrife	1 x 0.5	140mm
<i>Olearia ramulosa</i>	Twiggy Daisy-Bush	2 x 1	140mm
<i>Pittosporum tobira</i> 'Miss Muffet'	Dwarf Pittosporum	2 x 2	140mm
<i>Plectranthus argentatus</i>	Silver Spurflower	1 x 1	140mm
<i>Prostanthera rotundifolia</i>	Native Oregano	2 x 1	140mm
<i>Veronica perfoliata</i>	Diggers Speedwell	0.9 x 1.5	140mm
<i>Raphiolepis hybrida</i> 'Oriental Pearl'	Indian Hawthorn	2 x 1	140mm
<i>Salvia leucantha</i>	Mexican Bush Sage	1 x 1	140mm
<i>Westringia fruticosa</i> 'Jervis Gem'	Native Rosemary	1 x 1	140mm
<i>Westringia 'Mundi'</i>	Dwarf Coast Rosemary	0.5 x 1	140mm
GRASSES & RUSHES			
<i>Anigozanthos hybrida</i> 'Bush Ballad'	Kangaroo Paw	0.6 x 0.6	140mm
<i>Dianella longifolia</i>	Flax Lily	0.5 x 0.5	140mm
<i>Lomandra 'Tanika'</i>	Mat Rush	1 x 1	140mm
<i>Lomandra concertifolia</i> 'Seascape'	Mat Rush	1 x 1	140mm
<i>Themeda triandra</i>	Kangaroo Grass	0.8 x 0.8	140mm
GROUNDCOVERS & CLIMBERS			
<i>Brachyscome angustifolia</i> 'Fresco Candy'	Stiff Daisy	0.3 x 0.6	140mm
<i>Casuarina glauca</i> 'Cousin It'	Cousin It	0.3 x 5	140mm
<i>Chrysocephalum semipapposum</i>	Clustered Everlasting	0.5 x spreading	140mm
<i>Clematis microphylla</i>	Small-leaved Clematis	0.5 x spreading	140mm
<i>Dichondra</i> 'Emerald Falls'	Emerald Falls Kidney Weed	0.3 x 0.5	140mm
<i>Dichondra</i> 'Silver Falls'	Silver Falls Kidney Weed	0.3 x 0.5	140mm
<i>Eremophila glabra</i>	Tar Bush	0.6 x 2	140mm
<i>Goodenia ovata</i>	Hop goodenia	0.3 x spreading	140mm
<i>Hardenbergia violacea</i> 'Happy Wanderer'	Happy Wanderer	2m x spreading	140mm
<i>Liriope muscari</i> 'Monroe White'	Lily Turf	0.6 x 0.6	140mm
<i>Myoporum parvifolium</i>	Creeping Boobialla	0.2 x 3.0	140mm
<i>Rosmarinus officinalis</i> 'Prostrata'	Prostrate Rosemary	0.6 x 2	140mm
<i>Scaevola calendulacea</i>	Dune Fan Flower	0.3 x spreading	140mm
<i>Senecio serpens</i>	Blue Chalk Sticks	0.5 x 0.3	140mm
<i>Viola hederacea</i>	Native Violet	0.1 x spreading	140mm

Mercy Health Abbotsford Landscape Concept - Fencing

CLARKE STREET



ABBOTSFORD CONVENT
HERITAGE GARDEN

Permeable steel palisade style fence to match existing bluestone fence height with bluestone plinth, aligned to extent of convent entryway.



ABBOTSFORD CONVENT









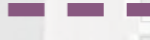
A variety of fencing treatments are proposed to provide security across the property at a sensitive distance from the heritage building. Perimeter fencing is located to the northern and eastern interfaces; delineating the property and private courtyards from the public streetscape. The proposed fencing is to be a 1.2m high powdercoat palisade fence, providing a visually permeable treatment to integrate into the overall planting scheme. The garden bed walls are offset in front of the palisade fencing and are comprised of three material types. The surrounding convent heritage character consists of predominately bluestone and brick. To provide a cohesive visual outcome, the Clarke Street interface utilises walls that alternate between bluestone and brick cladding along the property boundary.

Along St Heliers Street interface, the fence treatment comprises of a 0.5m high concrete wall, offset with garden bed from a visually permeable 1.3m high powdercoat palisade fence on top, bringing the total fence height to 1.8m. The design intent of the fence is to provide clear definition to the property.

In front of the convent entryway, a section of permeable steel palisade fencing and bluestone plinth is proposed to match the existing bluestone wall height and materiality. The existing wall is currently a solid bluestone wall which blocks sightlines into the front entrance. Permeable steel fencing in this location will provide visual connectivity between the convent entry and the driveway.

Perimeter fencing is also located along the Good Shepherd Chapel and Abbotsford Convent Building interface. This fence treatment comprises of a 1.8m high powdercoat steel palisade fence to provide delineation at a sensitive distance between the heritage Chapel building and the adjacent property extents.

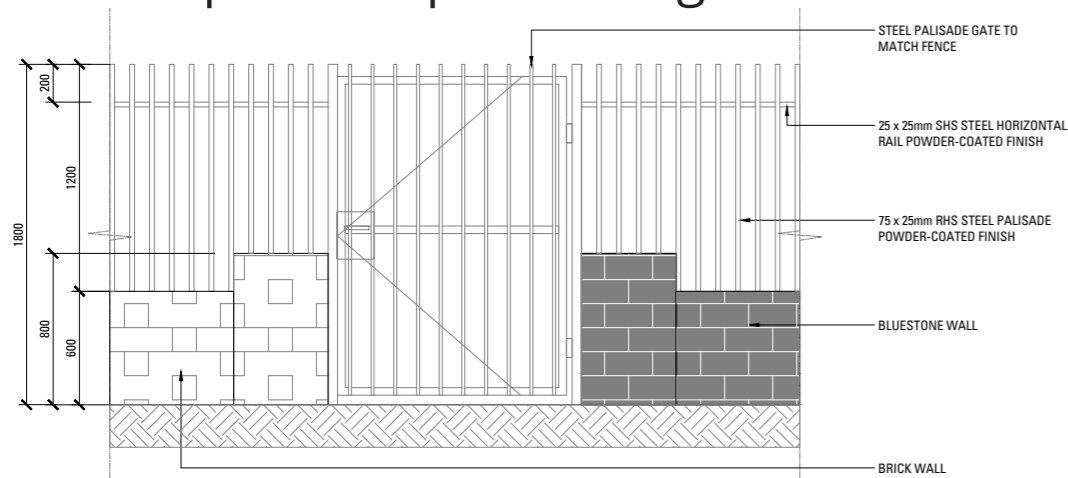
Legend

-  **Perimeter fencing to Clarke Street**
1.2m high (1.8m overall height) steel palisade fencing powdercoated in beige
-  **Perimeter fencing gate to Clarke Street**
1.8m high steel palisade secure gate powdercoated in beige
-  **Perimeter fencing wall to Clarke Street**
0.6m high brick wall
-  **Perimeter fencing wall to Clarke Street**
0.6m high bluestone wall
-  **Perimeter fencing wall to St Heliers Street**
0.5m high concrete wall
-  **Entrance fencing to Convent Entryway**
1.4m high (1.8m overall height to match existing bluestone wall height) steel palisade fencing powdercoated in monument grey with 0.4m high bluestone wall aligned to extent of convent entryway
-  **Perimeter fencing to Good Shepherd Chapel & Abbotsford Convent Building**
1.8m high steel palisade fencing powdercoated in beige

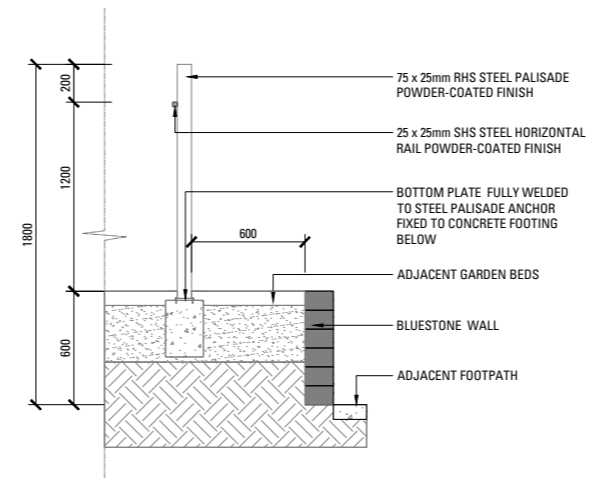


Mercy Health Abbotsford

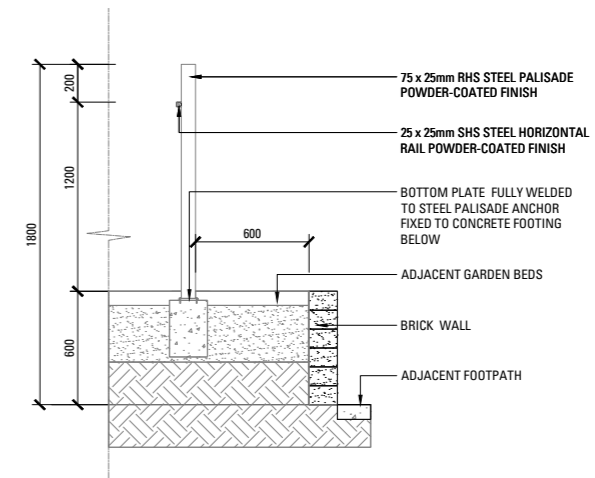
Landscape Concept - Fencing Details



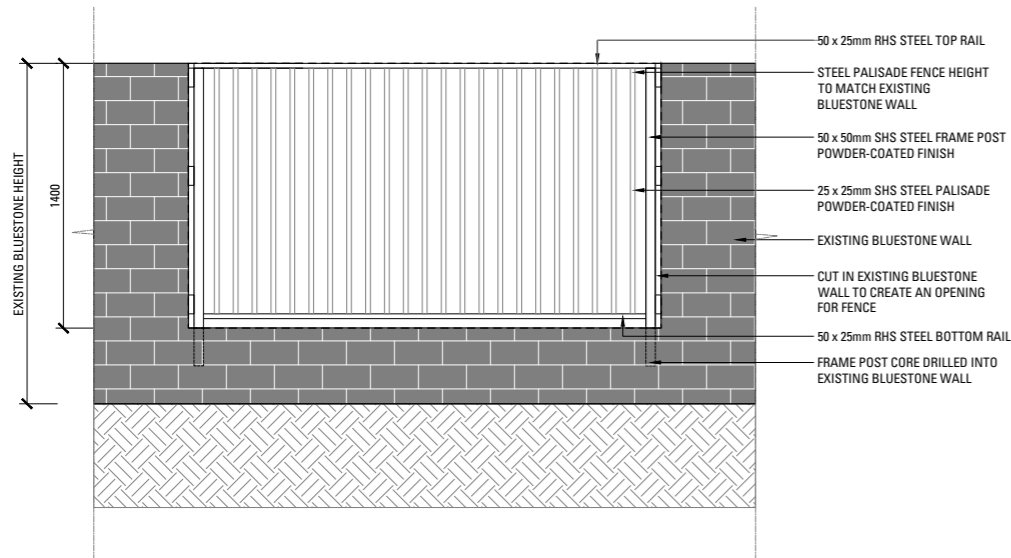
01 PERIMETER FENCING AND GATE TO CLARKE STREET - ELEVATION
SCALE 1:40 at A3



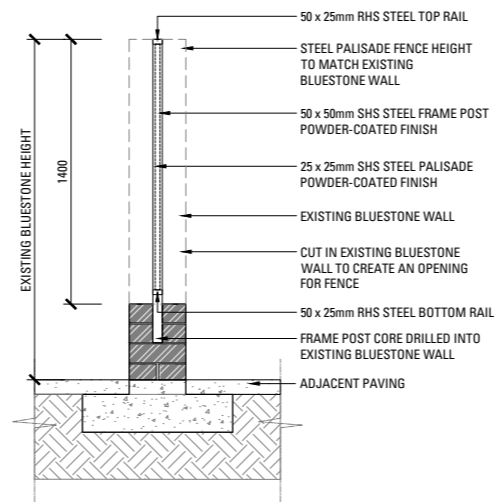
02 PERIMETER FENCING AND BLUESTONE WALL TO CLARKE STREET - SECTION
SCALE 1:40 at A3



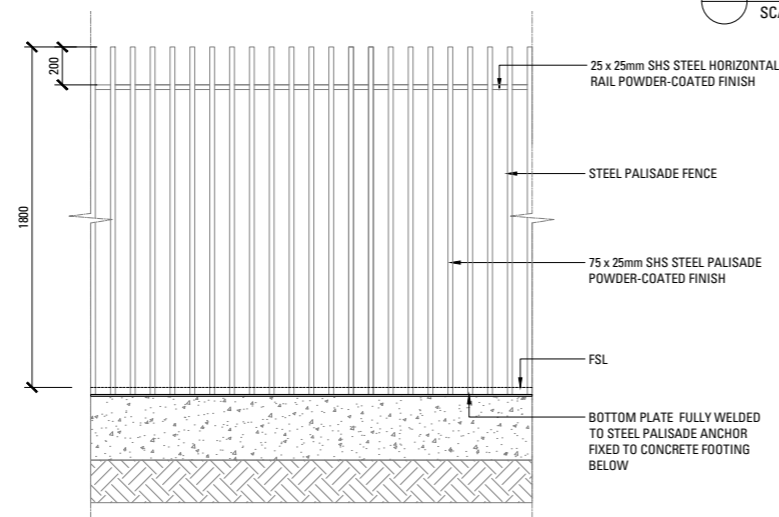
03 PERIMETER FENCING AND BRICK WALL TO CLARKE STREET - SECTION
SCALE 1:40 at A3



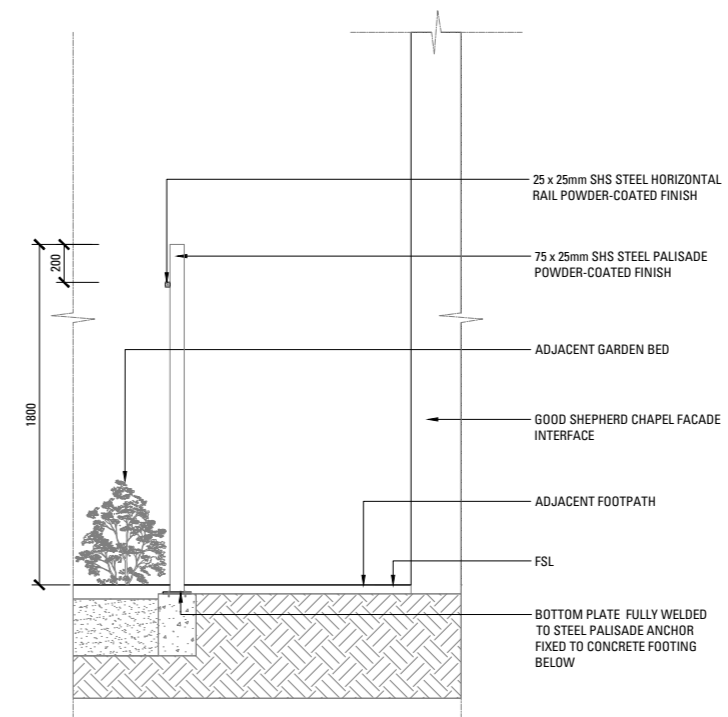
04 ENTRANCE FENCING TO CONVENT ENTRYWAY - ELEVATION
SCALE 1:40 at A3



05 ENTRANCE FENCING TO CONVENT ENTRYWAY - SECTION
SCALE 1:40 at A3



06 FENCING TO GOOD SHEPHERD CHAPEL - SECTION
SCALE 1:40 at A3



07 FENCING TO GOOD SHEPHERD CHAPEL - SECTION
SCALE 1:40 at A3

ARCADIA