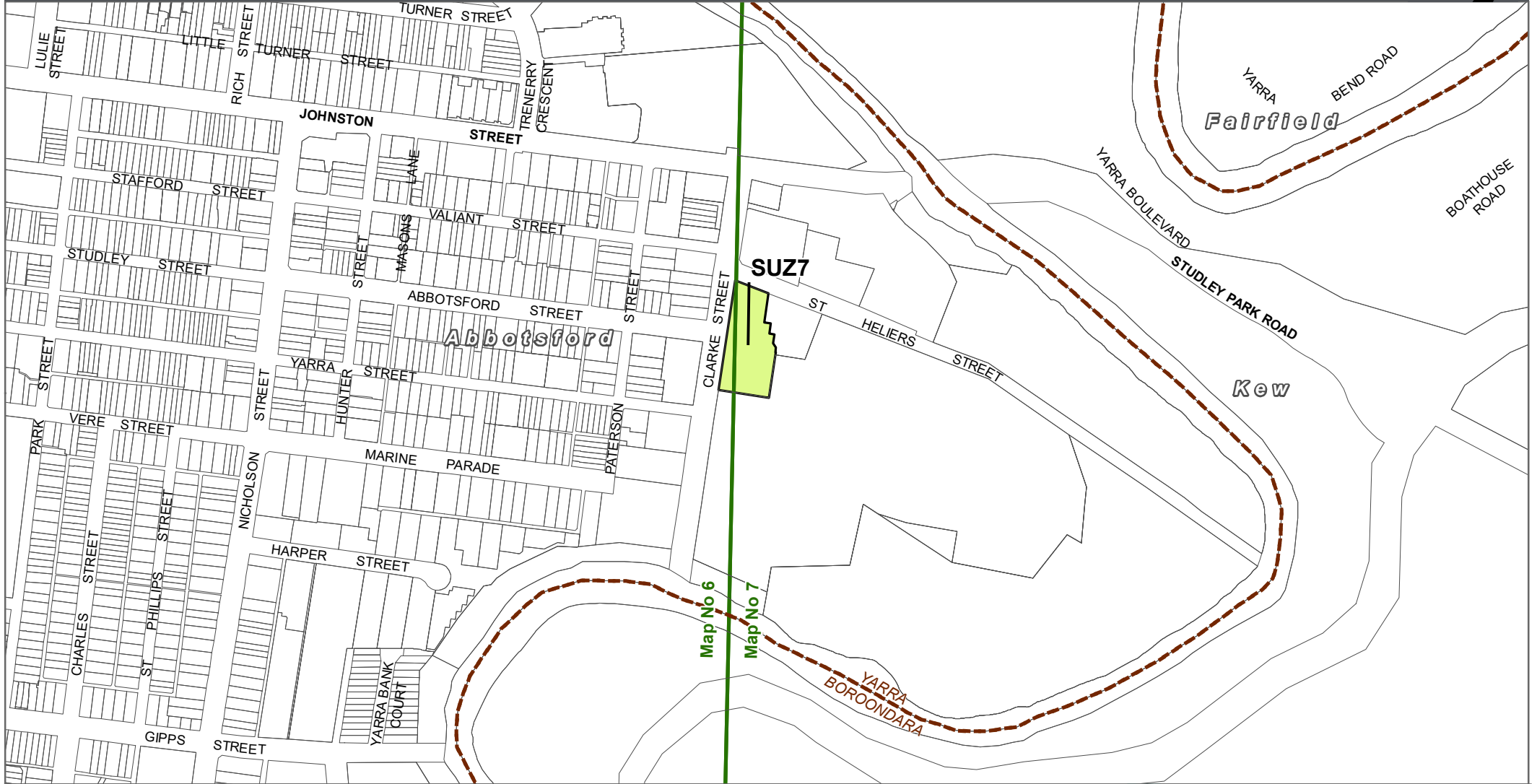




# YARRA PLANNING SCHEME - LOCAL PROVISION AMENDMENT C328yara



## LEGEND

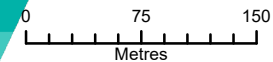
-  SUZ - Special Use Zone
-  Local Government Area

**Disclaimer**  
This publication may be of assistance to you but the State of Victoria and its employees do not guarantee that the publication is without flaw of any kind or is wholly appropriate for your particular purposes and therefore disclaims all liability for any error, loss or other consequence which may arise from you relying on any information in this publication.

© The State of Victoria Department of Transport and Planning 2025



Planning Group  
Print Date: 07/08/2025  
Amendment Version: 1



Department of Transport and Planning

Part of Planning Scheme Maps 6 & 7

