

# Urban Forestry Victoria P/L

Arboricultural Consultation



## Tree Protection and Management Plan

100f St Georges Rd, Fitzroy North VIC 3068

Responsible authority Yarra Council  
Date of Report 2/07/2025  
Report version 1.0  
Prepared by Urban Forestry Victoria Pty. Ltd.  
E: urbanforestryvictoria@gmail.com  
Report Author Trevor Moulynox<sup>1</sup> (AQF level. 5)  
P: 0405 523 954

## Contents

Introduction .....	2
Background .....	3
Tree Management Plan Schedule .....	5
Pre-demolition .....	5
Pre-construction .....	9
Construction.....	10
Post construction and landscape construction.....	10
Final certification .....	10
Tree Data.....	11
Induction Log.....	14
Tree Protection Management Plan Certification Logbook .....	15
Glossary.....	19
Tree Protection Plan (TPP) .....	19

---

<sup>1</sup> I Mr. Trevor Moulynox, consent to having my personal information (name, phone number) contained in this document submitted as part of an application for a planning permit, be made available electronically in accordance with the public availability requirements of the Planning and Environment Act 1987. I understand that if I wish to withdraw my consent at any time, I need to notify Council's Statutory Planning Unit in writing.

## Introduction

### Summary of requirements of tree management plan.

The Tree Protection and Management Plan lays out the procedures that must be adhered to for the protection and management of identified trees throughout the development of the subject site. The approved Tree Protection and Management Plan (TPMP) must be adhered to for certification by a Project Arborist.

It is the responsibility of the property owner to ensure that all contractors attending the subject site adhere to the specifications as detailed in the TPMP and the permit conditions by the responsible authority.

The tree protection outlined in this report and the accompanying Tree Protection Plan (TPP) are based on the plans identified herein and must not be deviated from during the construction phases. All works within the TPZ of a retained tree must be approved by the responsible authority. Approval by the responsible authority is required for any alteration of the approved Tree Protection Plan.

### Project Arborist.

Before the onsite work commences, including demolition or removal of vegetation, the name and contact details of a Project Arborist responsible for certification of the TPMP must be submitted to the Responsible Authority.

The Project Arborist must inspect the site when specified (Scheduled Site Inspections) and must maintain a logbook<sup>1</sup> detailing all site visits, actions, and photographic evidence. The logbook must be made available to the responsible authority within 24 hours of any request.

### Access to TPMP and TPP.

A copy of the TPMP and accompanying (full size) TPP must be available at the subject site prior to the commencement of, and during, the demolition and construction phases.

---

<sup>1</sup> Tree Protection Management Plan Certification Logbook.

## Background

### Overview of trees to be retained<sup>1</sup>.

Tree	Common Name	Proposal	SRZ(m)	TPZ(m)
1	Holly Oak	Retain	3.3	10.8
2	English Elm	Retain	3.2	10.1
3	English Elm	Retain	3.6	13.7
4	English Elm	Retain	3.9	15.0
5	English Elm	Retain	3.2	11.2
6	English Elm	Retain	3.2	10.5
7	English Elm	Retain	3.6	13.0
11	English Elm	Retain	4.0	17.5
35	Jacaranda	Retain	1.8	3.0
36	Jacaranda	Retain	2.0	3.2
37	Jacaranda	Retain	1.7	2.5
38	English Elm	Retain	2.7	6.4
39	English Elm	Retain	2.9	8.0
40	English Elm	Retain	2.6	7.0
41	English Elm	Retain	2.8	7.1
42	English Elm	Retain	2.5	6.0
43	English Elm	Retain	2.5	6.0
44	English Elm	Retain	2.8	7.1
45	Moreton Bay Fig	Retain	2.6	5.8
46	Pin Oak	Retain	2.7	6.5
47	English Elm	Retain	3.0	8.7
48	English Elm	Retain	2.8	7.4
49	English Elm	Retain	2.8	7.9
50	English Elm	Retain	2.7	6.1
51	English Elm	Retain	2.6	7.5
57	Moreton Bay Fig	Retain	2.2	4.5
59	Moreton Bay Fig	Retain	3.1	10.5
67	Moreton Bay Fig	Retain	2.7	9.0
68	Narrow-leaved Black Peppermint	Retain	2.7	7.0
69	English Elm	Retain	2.3	4.7
70	English Elm	Retain	2.5	4.2
71	English Elm	Retain	2.4	5.0
72	English Elm	Retain	2.2	3.8
73	English Elm	Retain	2.3	4.2
74	English Elm	Retain	2.5	5.3
75	English Elm	Retain	2.9	7.1
76	English Elm	Retain	3.1	8.0
77	Sweet Pittosporum	Retain	1.9	2.8
78	Sweet Pittosporum	Retain	2.2	4.4
79	Sweet Pittosporum	Retain	2.1	4.1
80	Lombardy Poplar	Retain	2.6	6.8
81	Pin Oak	Retain	2.6	6.5
82	Pin Oak	Retain	2.3	5.3
83	Jacaranda	Retain	2.3	4.9

<sup>1</sup> Tree 5. Revision of the design to reduce the impact to a tolerable degree is required for retention of the tree. Tree 51. Revision of the design to reduce the impact to a tolerable degree is required for retention of the tree.

Overview of trees to be removed.

Tree	Common Name	Proposal	SRZ(m)	TPZ(m)
8	English Elm	Demolish	3.6	18.8
9	English Elm	Demolish	3.9	21.2
10	English Elm	Demolish	3.8	21.0
12	Lilly-Pilly	Demolish	1.8	2.9
13	Brush Box	Demolish	2.5	8.1
14	Chilean Willow	Demolish	2.3	6.8
15	Chilean Willow	Demolish	2.4	6.1
16	Variegated Pittosporum	Demolish	1.6	2.8
17	Variegated Pittosporum	Demolish	1.7	2.8
18	English Elm	Demolish	2.2	5.3
19	Weeping Lilly-Pilly	Demolish	2.2	5.3
20	Weeping Lilly-Pilly	Demolish	2.2	5.5
21	Weeping Lilly-Pilly	Demolish	2.1	4.6
22	Weeping Lilly-Pilly	Demolish	2.3	5.6
23	Weeping Lilly-Pilly	Demolish	2.7	8.2
24	Jacaranda	Demolish	2.0	4.1
25	Jacaranda	Demolish	2.1	3.5
26	Jacaranda	Demolish	1.9	4.5
27	Jacaranda	Demolish	1.6	2.9
28	Jacaranda	Demolish	1.6	2.8
29	Jacaranda	Demolish	1.9	4.1
30	Jacaranda	Demolish	1.9	3.7
31	Jacaranda	Demolish	1.9	4.7
32	Jacaranda	Demolish	1.9	4.1
33	Jacaranda	Demolish	1.9	4.1
34	Jacaranda	Demolish	1.6	2.8
52	English Elm	Demolish	2.0	3.9
53	Sweet Pittosporum	Demolish	2.2	5.2
54	Sweet Pittosporum	Demolish	1.9	5.0
55	Narrow-leaved Black Peppermint	Demolish	3.5	16.8
56	Brittle Gum	Demolish	2.7	8.5
58	Brittle Gum	Demolish	2.9	10.7
60	English Elm	Demolish	2.4	5.1
61	English Elm	Demolish	2.6	8.1
62	English Elm	Demolish	2.5	7.8
63	Pin Oak	Demolish	2.5	7.6
64	Pin Oak	Demolish	2.7	10.2
65	Chinese Elm	Demolish	1.6	3.0
66	Pin Oak	Demolish	2.7	8.5

Referenced Documents

Title	Date	Author	
TPP Page 1	Existing Conditions Plan	12/05/25	Enlocus
TPP Page 2	Surface Finished Plan - A	12/05/25	Enlocus
TPP Page 3	Surface Finished Plan - B	12/05/25	Enlocus
Arboricultural Impact Assessment Version B3.0		16/06/25	Urban Forestry Victoria
Protection of Trees on Development Sites		-	Australian Standard 4970-2009
Pruning of Amenity Trees		-	Australian Standard 4373-2007

### Restricted activities

The following activities are not permitted within the Tree Protection Zone (TPZ) unless approved by the Responsible Authority or as specifically allowed and endorsed within the TPMP:

- Machine excavation including trenching
- Excavation for silt fencing
- Cultivation
- Storage
- Refuelling
- Parking of vehicles and plant fuelling
- Preparation of chemicals, including preparation of cement products
- Dumping of waste
- Wash down and cleaning of equipment
- Placement of fill
- Lighting of fires
- Soil level changes
- Physical damage to the tree
- Temporary or permanent installation of utilities and sign

## Tree Management Plan Schedule

### Pre-demolition

#### Pre-demolition site induction meeting.

A pre-demolition meeting must be held at the subject site prior to the commencement of any works. The meeting must be attended by the relevant Contractor and/or Project Manager and the engaged Project Arborist.

The purpose of the meeting will be to

- Locate and identify protected trees.
- Establish tree protection zones and area locations.
- Identify tree protection requirements.
- Locate and identify trees to be demolished.
- Identify site access, on-site amenities, and material storage areas.
- Identify specific demolition and construction constraints as shown on the TPP.
- Discuss all points of the tree protection and management plan and pre-demolition.
- Identify required scheduled site inspections and certification requirements.

### Site access, on-site amenities, and storage locations.

Where **site access** requires entry within the TPZ of a protected tree, ground protection must be installed as per the specifications listed below, and maintained throughout the phases of the development until such time as permanent access is constructed, or access is no longer required.

**On-site amenities** must not be placed within the protected area of the TPZ.

**Materials storage** must not be placed within the protected area of the TPZ.

**On-site waste storage** must not be placed within the protected area of the TPZ.

### Pruning.

Pruning of municipal trees must be conducted by a council approved contractor only.

There are no pruning works specified in the TPMP.

Any pruning required to facilitate movement through the site, safe operation of machinery, or to facilitate construction (including erection of scaffolding) must be carried out with approval from, and to the satisfaction of the responsible authority.

All pruning works required must be conducted by a qualified Arborist (minimum AQF lvl. 3) in accordance with AS4737-2007 Pruning of amenity trees.

### Tree removal.

Removal of municipal trees must be conducted by a council approved contractor only.

All tree/vegetation removal works must be carried out after the installation of tree protection measures. Contractors must adhere to the activities restricted within the TPZ.

Tree removal within the TPZ of any protected tree must not be performed by means of machinery (excavator, skid steer loader etc.).

Tree stump removal within the TPZ of any protected tree must be undertaken by use of a stump grinder only, ensuring no disturbance to the TPZ of protected trees. Stump removal must not be performed by means of machinery (excavator, skid steer loader etc.). Tree stump removal must be undertaken by use of a stump grinder only, where SRZs overlap built form that is to be retained within the subject site or within neighbouring or municipal properties.

### TPZ fencing, ground protection and mulching.

- TPZ fencing must be installed as shown on the approved **Pre-demolition phase TPP**. All protective fencing must adhere to Australian Standard 4687-2007 Temporary Fencing and Hoardings. Shade cloth or similar must be attached to reduce the transport of dust, other particulate matter, and liquids into the protected area.
- Fence posts and supports should have a diameter greater than 20mm and be located clear of roots.
- Existing perimeter fencing and other structures may be suitable as part of the protective fencing.
- The protected area of the TPZ must be mulched to a depth of 100mm. All mulch must adhere to Australian Standard 4454-2012 Composts, Soil Conditioners and Mulch.

Tree protection must be erected before any machinery or material are brought onto the site and before the commencement of works including demolition. Once installed, tree protection must not be removed or altered without approval by responsible authority.

The tree protection must be secured to restrict access. Where there are approved works within the TPZ, it may only be reduced to the required amount by an authorized person only during approved construction within the TPZ and must be restored in accordance with the above requirements at all other times.

Prior to the commencement of any works at the site (including demolition and excavation), the Project Arborist must certify that tree protection measures comply with the approved TPP.

### Signage.

Signs identifying the protected area as a tree protection area must be placed on the TPZ fencing and be visible from within the development site. The lettering on the sign must comply with Australian Standard 1319-1994 Safety Signs for the Occupational Environment.

### Supervision of demolition within the TPZ.

Excavation within the TPZ of retained trees must be conducted under supervision of the Project Arborist as per the specifications outlined within Supervision of excavation/Root pruning.

The Project Manager must arrange a date/time with the Project Arborist no less than one week prior to the works being undertaken.

### Services.

The siting of any necessary stormwater detention pit, underground service, pit, and/or rainwater harvesting tank must be located outside of the TPZ of any tree to be retained and protected.

If in-ground services are required within the TPZ of any retained tree, they must be

- Approved by the responsible authority, and
- Installed by way of non-destructive trenching (hand excavation, hydro excavation) under the supervision of a Project Arborist. During non-destructive trenching works,
  - Any roots greater than 20mm diameter uncovered during non-destructive trenching must be retained if possible, and services installed beneath the retained roots.
  - Any roots less than 20mm diameter uncovered during non-destructive trenching may be pruned at the edge of the trench closest to the tree using a sharp saw or secateurs.
  - Any machinery not specifically designed to prune roots must not be used.
  - Any exposed roots must not be allowed to desiccate. Exposed roots must be covered with pre-moistened thick hessian or jute matting and pinned. The covering must be kept moist until such a time as the roots are permanently covered.

### Supervision of excavation/Root pruning.

Excavation within TPZs (if required and approved by the responsible authority) must be carried out under supervision of the Project Arborist to assess and manage root systems. Where the Project Arborist identifies roots to be pruned, they must be pruned by the Project Arborist in accordance with Australian Standard 4373-2007 Pruning of Amenity Trees.

Prior to any excavation occurring a trench must be dug by hand or by other non-destructive means (pneumatic, or hydro-excavation) along the edge of the excavation within the TPZ of the tree to the same depth as the proposed excavation, to a maximum depth of 1.0m below the natural grade.

During the works:

- Excavation must be supervised by the Project Arborist.
- Any roots found must be pruned at the edge of the trench closest to the tree using sharp saw or secateurs. Any machinery not specifically designed to prune roots must not be used.
- Any exposed roots must not be allowed to desiccate. Exposed roots must be covered with pre-moistened thick hessian or jute matting and pinned. The covering must be kept moist until such a time as the roots are permanently covered.

### Additional tree protection requirements.

If damage occurs to a protected tree, the responsible authority must be notified within a 24-hour period.

### Irrigation

An irrigation system must be installed and be adequate to access all retained and impacted trees.

The protected area of the Tree Protection Zone for all retained and impacted trees must be irrigated during summer months (December-February) with 1 litre of clean water for every 1cm of trunk girth, measured at the soil/trunk interface (ground level) on a weekly basis (litres per week = lpw).

Tree	Common Name	Proposal	DRF(cm)	lpw(l)	Encroachment (m <sup>2</sup> )	Encroachment (%)
1	Holly Oak	Retain	98	0	0.00	0.00%
2	English Elm	Retain	89	0	0.00	0.00%
3	English Elm	Retain	119	374	4.15	0.71%
4	English Elm	Retain	146	0	0.00	0.00%
5	English Elm	Retain	89	279	98.67	33.24%
6	English Elm	Retain	92	289	30.01	10.11%
7	English Elm	Retain	121	380	1.02	0.19%
11	English Elm	Retain	156	490	102.57	14.51%
35	Jacaranda	Retain	22	69	1.09	6.39%
36	Jacaranda	Retain	30	0	0.00	0.00%
37	Jacaranda	Retain	21	0	0.00	0.00%
38	English Elm	Retain	62	0	0.00	0.00%
39	English Elm	Retain	74	0	0.00	0.00%
40	English Elm	Retain	57	0	0.00	0.00%
41	English Elm	Retain	68	0	0.00	0.00%
42	English Elm	Retain	53	0	0.00	0.00%
43	English Elm	Retain	53	0	0.00	0.00%
44	English Elm	Retain	65	0	0.00	0.00%

Tree	Common Name	Proposal	DRF(cm)	lpw(l)	Encroachment (m <sup>2</sup> )	Encroachment (%)
45	Moreton Bay Fig	Retain	58	0	0.00	0.00%
46	Pin Oak	Retain	63	0	0.00	0.00%
47	English Elm	Retain	77	0	0.00	0.00%
48	English Elm	Retain	69	0	0.00	0.00%
49	English Elm	Retain	70	0	0.00	0.00%
50	English Elm	Retain	62	0	0.00	0.00%
51	English Elm	Retain	58	182	35.80	25.23%
57	Moreton Bay Fig	Retain	38	119	1.61	3.01%
59	Moreton Bay Fig	Retain	84	264	10.74	3.61%
67	Moreton Bay Fig	Retain	64	201	3.98	1.68%
68	Narrow-leaved Black Peppermint	Retain	63	0	0.00	0.00%
69	English Elm	Retain	43	0	0.00	0.00%
70	English Elm	Retain	49	0	0.00	0.00%
71	English Elm	Retain	47	0	0.00	0.00%
72	English Elm	Retain	37	0	0.00	0.00%
73	English Elm	Retain	42	0	0.00	0.00%
74	English Elm	Retain	51	0	0.00	0.00%
75	English Elm	Retain	72	0	0.00	0.00%
76	English Elm	Retain	86	0	0.00	0.00%
77	Sweet Pittosporum	Retain	27	0	0.00	0.00%
78	Sweet Pittosporum	Retain	37	0	0.00	0.00%
79	Sweet Pittosporum	Retain	34	0	0.00	0.00%
80	Lombardy Poplar	Retain	57	0	0.00	0.00%
81	Pin Oak	Retain	54	0	0.00	0.00%
82	Pin Oak	Retain	44	0	0.00	0.00%
83	Jacaranda	Retain	41	0	0.00	0.00%

## Pre-construction

### TPZ fencing, ground protection and mulching.

- TPZ fencing must be modified as shown on the approved **Pre-construction & Construction Phase TPP – A & B.**

### Scheduled site inspection (Pre-construction meeting).

The Project Arborist must conduct a site inspection prior to the commencement of construction to certify the TPMP is adhered to. Non-compliance with the approved TPMP will require remediation for certification.

The purpose of the meeting will be to

- Inspect tree protection zones and areas.
- Identify TPMP non-compliance issues and discuss remediation action required.
- Identify specific construction constraints as shown on the TPP.
- Identify required scheduled site inspections.

## Construction

### Supervision of construction within the TPZ.

Excavation within the TPZ of retained trees must be conducted under supervision of the Project Arborist as per the specifications outlined within Supervision of excavation/Root pruning.

The Project Manager must arrange a date/time with the Project Arborist no less than one week prior to the works being undertaken.

## Post construction and landscape construction

### TPZ fencing, ground protection and mulching.

- TPZ fencing must be retained as shown on the approved **Pre-construction & Construction Phase TPP – A & B.**
- Ground protection must be retained as shown on the approved **Pre-construction & Construction Phase TPP – A & B.**

### Scheduled site inspection.

The Project Arborist must conduct a site inspection prior to the commencement of landscape construction to certify the TPMP is adhered to. Non-compliance with the approved TPMP will require remediation for certification.

The purpose of the meeting will be to

- Inspect/modify tree protection zones and areas.
- Identify TPMP non-compliance issues and discuss remediation action required.
- Identify specific construction constraints as shown on the TPP.

### Removal of tree protection.

Timing for removal of tree protection must be identified by the project manager and confirmed by the Project Arborist. The Project Arborist must document the removal of the tree protection and include notes in certification documentation.

## Final certification

### Scheduled site inspection.

The Project Arborist must conduct a site inspection at project completion to certify the TPMP has been adhered to. Non-compliance with the approved TPMP must be documented in the final certification.

A comparative tree assessment must be conducted. Remedial action must be recommended within the certification logbook.

### Tree Protection and Management Plan final certification

The Project Arborist must complete the logbook detailing all site visits, actions, and photographic evidence. The logbook must be issued to the Project Manager.

## Tree Data

Tree No.	Common Name	Botanical Name	Origin	Height (m)	Width (m)	DRF (cm)	SRZ (m)	DSH (cm)	NRZ (m)	TPZ (m)	Health	Canopy str.	Stem str.	Age Class	Significance	ELE	Retention Value
1	Holly Oak	<i>Quercus ilex</i>	Non-native	16	16	98	3.3	90	10.8	10.8	G	G	G	M	H	>20	H
2	English Elm	<i>Ulmus procera</i>	Non-native	19	15	89	3.2	84	10.1	10.1	F	F	F	LM	H	<5	M
3	English Elm	<i>Ulmus procera</i>	Non-native	20	18	119	3.6	114	13.7	13.7	F	F	F	LM	H	<5	M
4	English Elm	<i>Ulmus procera</i>	Non-native	20	18	146	3.9	132	15.0	15.0	F	F	F	LM	H	<5	M
5	English Elm	<i>Ulmus procera</i>	Non-native	19	15	89	3.2	81	9.7	11.2	F	F	G	LM	H	<10	M+
6	English Elm	<i>Ulmus procera</i>	Non-native	20	12	92	3.2	81	9.7	10.5	F	F	G	LM	H	<10	M+
7	English Elm	<i>Ulmus procera</i>	Non-native	16	14	121	3.6	108	13.0	13.0	P	F	G	LM	H	<5	M
8	English Elm	<i>Ulmus procera</i>	Non-native	20	16	123	3.6	111	13.3	18.8	F	F	G	LM	H	<10	M+
9	English Elm	<i>Ulmus procera</i>	Non-native	20	16	144	3.9	129	15.0	21.2	F	F	F	LM	H	<5	M
10	English Elm	<i>Ulmus procera</i>	Non-native	16	14	141	3.8	124	14.9	21.0	F	F	G	LM	H	<10	M+
11	English Elm	<i>Ulmus procera</i>	Non-native	20	20	156	4.0	149	15.0	17.5	F	F	F	LM	H	<5	M
12	Lilly-Pilly	<i>Syzygium smithii</i>	Vic. native	5	3	22	1.8	17	2.0	2.9	F	P	P	SM	L	<5	L
13	Brush Box	<i>Lophostemon confertus</i>	Aus. native	10	9	53	2.5	48x	5.7	8.1	G	G	G	M	M	>20	M+
14	Chilean Willow	<i>Salix humboldtiana 'Pyramidalis'</i>	Non-native	12	5	43	2.3	40x	4.8	6.8	F	G	G	M	M	<15	M
15	Chilean Willow	<i>Salix humboldtiana 'Pyramidalis'</i>	Non-native	12	4	48	2.4	36	4.3	6.1	F	G	G	M	M	<15	M
16	Variegated Pittosporum	<i>Pittosporum euginoides</i>	Non-native	4	4	19	1.6	13	2.0	2.8	G	F	G	SM	L	>20	L
17	Variegated Pittosporum	<i>Pittosporum euginoides</i>	Non-native	4	3	20	1.7	11	2.0	2.8	G	F	G	SM	L	>20	L
18	English Elm	<i>Ulmus procera</i>	Non-native	10	6	38	2.2	31	3.7	5.3	G	G	G	SM	M	>25	M+
19	Weeping Lilly-Pilly	<i>Waterhousea floribunda</i>	Aus. native	8	5	36	2.2	31	3.7	5.3	F	G	F	M	M	<10	M-
20	Weeping Lilly-Pilly	<i>Waterhousea floribunda</i>	Aus. native	9	5	39	2.2	32x	3.9	5.5	F	G	F	M	M	<10	M-
21	Weeping Lilly-Pilly	<i>Waterhousea floribunda</i>	Aus. native	10	5	34	2.1	27	3.2	4.6	F	G	F	M	M	<10	M-
22	Weeping Lilly-Pilly	<i>Waterhousea floribunda</i>	Aus. native	10	6	44	2.3	33x	4.0	5.6	F	F	P	M	M	<5	L
23	Weeping Lilly-Pilly	<i>Waterhousea floribunda</i>	Aus. native	10	8	63	2.7	48x	5.8	8.2	F	G	G	M	M	<15	M
24	Jacaranda	<i>Jacaranda mimosifolia</i>	Non-native	6	5	30	2.0	24x	2.9	4.1	G	G	G	M	M	>20	M+
25	Jacaranda	<i>Jacaranda mimosifolia</i>	Non-native	8	7	32	2.1	27x	3.2	3.5	G	G	G	M	M	>20	M+
26	Jacaranda	<i>Jacaranda mimosifolia</i>	Non-native	7	9	26	1.9	24	2.9	4.5	G	G	G	M	M	>20	M+
27	Jacaranda	<i>Jacaranda mimosifolia</i>	Non-native	6	5	19	1.6	17	2.0	2.9	G	G	G	M	M	>20	M+

Tree Protection and Management Plan – 100f St Georges Rd, Fitzroy North VIC 3068 -12

Tree No.	Common Name	Botanical Name	Origin	Height (m)	Width (m)	DRF (cm)	SRZ (m)	DSH (cm)	NRZ (m)	TPZ (m)	Health	Canopy str.	Stem str.	Age Class	Significance	ELE	Retention Value
28	Jacaranda	<i>Jacaranda mimosifolia</i>	Non-native	5	4	17	1.6	14	2.0	2.8	G	F	G	SM	M	>20	M
29	Jacaranda	<i>Jacaranda mimosifolia</i>	Non-native	8	8	27	1.9	24x	2.9	4.1	G	G	G	M	M	>20	M+
30	Jacaranda	<i>Jacaranda mimosifolia</i>	Non-native	7	7	27	1.9	22	2.6	3.7	G	G	G	M	M	>20	M+
31	Jacaranda	<i>Jacaranda mimosifolia</i>	Non-native	7	8	27	1.9	28x	3.3	4.7	G	G	G	M	M	>20	M+
32	Jacaranda	<i>Jacaranda mimosifolia</i>	Non-native	6	6	27	1.9	24x	2.9	4.1	G	G	G	M	M	>20	M+
33	Jacaranda	<i>Jacaranda mimosifolia</i>	Non-native	6	7	26	1.9	24x	2.9	4.1	G	G	G	M	M	>20	M+
34	Jacaranda	<i>Jacaranda mimosifolia</i>	Non-native	4	4	17	1.6	14x	2.0	2.8	G	G	G	SM	M	>25	M+
35	Jacaranda	<i>Jacaranda mimosifolia</i>	Non-native	6	6	22	1.8	19x	2.3	3.0	G	G	G	SM	M	>25	M+
36	Jacaranda	<i>Jacaranda mimosifolia</i>	Non-native	6	6	30	2.0	26x	3.2	3.2	G	G	G	M	M	>20	M+
37	Jacaranda	<i>Jacaranda mimosifolia</i>	Non-native	6	5	21	1.7	18	2.2	2.5	G	G	G	SM	M	>25	M+
38	English Elm	<i>Ulmus procera</i>	Non-native	12	11	62	2.7	53	6.4	6.4	G	G	G	M	M	>20	M+
39	English Elm	<i>Ulmus procera</i>	Non-native	14	16	74	2.9	66	7.9	8.0	G	G	G	M	H	>20	H
40	English Elm	<i>Ulmus procera</i>	Non-native	12	14	57	2.6	49	5.9	7.0	F	G	G	M	M	<15	M
41	English Elm	<i>Ulmus procera</i>	Non-native	12	14	68	2.8	59	7.1	7.1	G	G	G	M	M	>20	M+
42	English Elm	<i>Ulmus procera</i>	Non-native	12	12	53	2.5	45	5.4	6.0	F	G	G	M	M	<15	M
43	English Elm	<i>Ulmus procera</i>	Non-native	10	12	53	2.5	43	5.2	6.0	F	F	G	M	M	<10	M-
44	English Elm	<i>Ulmus procera</i>	Non-native	10	12	65	2.8	59	7.1	7.1	F	G	G	M	M	<15	M
45	Moreton Bay Fig	<i>Ficus macrphylla</i>	Aus. native	6	9	58	2.6	48x	5.8	5.8	G	G	F	M	M	>15	M
46	Pin Oak	<i>Quercus palustris</i>	Non-native	15	13	63	2.7	52	6.2	6.5	F	G	G	M	H	<15	H
47	English Elm	<i>Ulmus procera</i>	Non-native	14	15	77	3.0	73x	8.7	8.7	F	G	G	M	H	<15	H
48	English Elm	<i>Ulmus procera</i>	Non-native	14	12	69	2.8	62	7.4	7.4	F	G	G	M	M	<15	M
49	English Elm	<i>Ulmus procera</i>	Non-native	12	11	70	2.8	66	7.9	7.9	F	G	G	M	M	<15	M
50	English Elm	<i>Ulmus procera</i>	Non-native	12	10	62	2.7	51	6.1	6.1	F	G	G	M	M	<15	M
51	English Elm	<i>Ulmus procera</i>	Non-native	9	8	58	2.6	56	6.7	7.5	F	G	G	M	M	<15	M
52	English Elm	<i>Ulmus procera</i>	Non-native	8	7	29	2.0	23	2.8	3.9	F	G	G	SM	L	<20	L
53	Sweet Pittosporum	<i>Pittosporum undulatum</i>	Vic. native	6	5	37	2.2	31x	3.7	5.2	G	F	G	M	L	>15	L
54	Sweet Pittosporum	<i>Pittosporum undulatum</i>	Vic. native	6	10	28	1.9	25x	3.1	5.0	G	F	G	M	L	>15	L
55	Narrow-leaved Black Peppermint	<i>Eucalyptus nicholii</i>	Aus. native	11	17	111	3.5	99	11.9	16.8	F	F	F	LM	H	<5	M
56	Brittle Gum	<i>Eucalyptus mannifera</i>	Vic. native	14	12	64	2.7	51	6.1	8.5	G	G	P	M	M	>10	M-
57	Moreton Bay Fig	<i>Ficus macrphylla</i>	Aus. native	6	8	38	2.2	34x	4.1	4.5	F	G	G	SM	M	<20	M

Tree Protection and Management Plan – 100f St Georges Rd, Fitzroy North VIC 3068 -13

Tree No.	Common Name	Botanical Name	Origin	Height (m)	Width (m)	DRF (cm)	SRZ (m)	DSH (cm)	NRZ (m)	TPZ (m)	Health	Canopy str.	Stem str.	Age Class	Significance	ELE	Retention Value
58	Brittle Gum	<i>Eucalyptus mannifera</i>	Vic. native	13	11	74	2.9	63	7.6	10.7	G	F	F	M	M	>10	M-
59	Moreton Bay Fig	<i>Ficus macrphylla</i>	Aus. native	8	13	84	3.1	81x	9.7	10.5	G	G	G	M	H	>20	H
60	English Elm	<i>Ulmus procera</i>	Non-native	8	8	46	2.4	38	4.6	5.1	F	G	G	SM	M	<20	M
61	English Elm	<i>Ulmus procera</i>	Non-native	10	12	56	2.6	48	5.8	8.1	G	G	G	M	M	>20	M+
62	English Elm	<i>Ulmus procera</i>	Non-native	10	10	53	2.5	46	5.5	7.8	F	G	G	M	M	<15	M
63	Pin Oak	<i>Quercus palustris</i>	Non-native	13	12	53	2.5	45	5.4	7.6	G	G	G	M	M	>20	M+
64	Pin Oak	<i>Quercus palustris</i>	Non-native	14	14	63	2.7	60	7.2	10.2	G	G	G	M	H	>20	H
65	Chinese Elm	<i>Ulmus parvifolia</i>	Non-native	5	6	19	1.6	17	2.0	3.0	G	G	F	Y	L	>20	L
66	Pin Oak	<i>Quercus palustris</i>	Non-native	8	14	60	2.7	50	6.0	8.5	G	G	G	M	H	>20	H
67	Moreton Bay Fig	<i>Ficus macrphylla</i>	Aus. native	7	15	64	2.7	72x	8.7	9.0	G	G	G	M	H	>20	H
68	Narrow-leaved Black Peppermint	<i>Eucalyptus nicholii</i>	Aus. native	14	14	63	2.7	55	6.6	7.0	G	G	G	M	M	>20	M+
69	English Elm	<i>Ulmus procera</i>	Non-native	13	8	43	2.3	39	4.7	4.7	F	F	G	M	M	<10	M-
70	English Elm	<i>Ulmus procera</i>	Non-native	10	6	49	2.5	35	4.2	4.2	F	F	G	M	M	<10	M-
71	English Elm	<i>Ulmus procera</i>	Non-native	13	10	47	2.4	38	4.6	5.0	F	F	G	M	M	<10	M-
72	English Elm	<i>Ulmus procera</i>	Non-native	13	6	37	2.2	32	3.8	3.8	F	F	G	M	M	<10	M-
73	English Elm	<i>Ulmus procera</i>	Non-native	16	6	42	2.3	35	4.2	4.2	F	F	G	M	M	<10	M-
74	English Elm	<i>Ulmus procera</i>	Non-native	13	8	51	2.5	44	5.3	5.3	F	F	G	M	M	<10	M-
75	English Elm	<i>Ulmus procera</i>	Non-native	16	12	72	2.9	59x	7.1	7.1	F	F	G	M	M	<10	M-
76	English Elm	<i>Ulmus procera</i>	Non-native	16	12	86	3.1	67	8.0	8.0	F	F	F	LM	M	<5	L
77	Sweet Pittosporum	<i>Pittosporum undulatum</i>	Vic. native	6	5	27	1.9	23	2.8	2.8	G	F	G	M	L	>15	L
78	Sweet Pittosporum	<i>Pittosporum undulatum</i>	Vic. native	6	5	37	2.2	37	4.4	4.4	G	F	G	M	L	>15	L
79	Sweet Pittosporum	<i>Pittosporum undulatum</i>	Vic. native	6	5	34	2.1	34	4.1	4.1	G	G	G	M	L	>20	M-
80	Lombardy Poplar	<i>Populus nigra</i>	Non-native	15	3	57	2.6	57	6.8	6.8	G	F	F	M	M	>10	M-
81	Pin Oak	<i>Quercus palustris</i>	Non-native	12	13	54	2.6	54	6.5	6.5	G	G	G	M	M	>20	M+
82	Pin Oak	<i>Quercus palustris</i>	Non-native	14	9	44	2.3	44	5.3	5.3	G	G	G	M	M	>20	M+
83	Jacaranda	<i>Jacaranda mimosifolia</i>	Non-native	12	8	41	2.3	41	4.9	4.9	G	G	G	M	M	>20	M+



## Tree Protection Management Plan Certification Logbook

(Project Arborist use only)

Site Address			
Project Arborist name		Contact number	
Project Manager/Builder/Owner		Contact number	
<b>Stage 1 – Pre-demolition</b>			
Site Induction - Demolition Contractors			
Meeting on Site Held?	Yes / No	Date/ Time of Meeting	
Persons Present:			
TMP copy given to all parties?	Yes / No		
Site Access			
Site Access determined and acceptable?		Yes / No	
Modification Required to Tree Protection Plan?		Yes / No	
Pruning and Vegetation/ Infrastructure Clearance within the T.P.Z.			
Tree Pruning required?		Yes / No / NA	
Tree Pruning undertaken to AS4373?		Yes / No / NA	
Tree Pruning undertaken in accordance with TMP recommendations?		Yes / No / NA	
Vegetation cleared from T.P.Z. in accordance with TMP recommendations?		Yes / No / NA	
Infrastructure cleared from T.P.Z. in accordance with TMP recommendations?		Yes / No / NA	
Fencing/ Trunk & Branch Protection/ Ground Protection/ Mulching			
Fencing installed in correct location as per TMP Protection Plan?		Yes / No / NA	
Ground protection installed correctly as per TMP Protection Plan?		Yes / No / NA	
Trunk & Branch Protection installed correctly as per TMP?		Yes / No / NA	
Has the Tree Protection Area been mulched to 100mm depth?		Yes / No / NA	
Is mulch type in accordance with the TMP?		Yes / No / NA	
Signage			
Signage present?		Yes / No	
Signage complies with TMP?		Yes / No	
Signage has Project Arborist contact details?		Yes / No	
Root Pruning			
Has root pruning been undertaken in accordance with TMP?		Yes / No / NA	
Supplementary Measures (list as needed)			
Has the Tree Protection Area been watered in accordance with the TMP?		Yes / No / NA	
Other:			
Comments/ Notes re Stage 1 Certification			
Photographs Taken?		Yes / No	
Date(s) Inspected:			
Compliance Date:		Signed:	







## Glossary

Item	Terminology
<b>Age class</b>	Y- Young - Juvenile tree and/or recently planted. Will grow to the maximum amount the conditions allow. SM – Semi mature - Tree is steadily growing into its mature shape and structure. M – Mature - Specimen has reached approximately 70% full size in situation but can continue to grow at a reduced rate in the mature stage of its life, depending on conditions. LM – Late mature - Tree is senescent. Over mature and in decline, may still put-on small amounts of growth in some areas of the tree, or it may still be healthy with one or more major structural faults.
<b>Botanical Name</b>	The genus and species of the tree. sp. = species. ssp. = sub-species. var. = variety
<b>Branch Structure</b>	G – The tree has no observable structural faults within the canopy. F – The tree has structural faults within the canopy that could likely be mitigated. The tree has some species typical structural faults within the canopy that may become deleterious. P – The tree has structural faults within the canopy that likely cannot be mitigated.
<b>Common Name</b>	A name commonly associated with the tree, that may vary.
<b>DRF (cm)</b>	Diameter of the stem measured at the top of the root flare using a diameter tape or tape measure. Expressed in centimetres. Where multiple trunks are present the measurement is taken at ground level. DRF with an ‘e’ following the number indicates an estimate due to access or site restrictions.
<b>DSH (cm)</b>	Diameter at Standard Height. Nominal trunk diameter at 1.4m above ground level. Expressed in centimetres. DSH with an ‘x’ following the number indicates a multi-stemmed tree. For trees where there are multiple stems, the combined stem DSH is calculated using the four largest stems. DSH with an ‘e’ following the number indicates an estimate due to access or sight restrictions.
<b>ELE</b>	Estimated Life Expectancy – in the trees current condition, without environmental changes or remedial works, it would (<) be reasonable to remove the tree within X years. (>) not be reasonable to remove the tree within X years. <i>This assessment is outside of the context of construction impact.</i>
<b>Health</b>	G – The tree has no observable constraints to its typical physiology. F – The tree has physiological issues that could likely be remediated. P – The tree has physiological issues that likely cannot be remediated.
<b>Height (m)</b>	H= Estimated height to upper most point of canopy.
<b>NRZ (m)</b>	Notional Root Zone. Zone enclosed by a radius of 12 times DSH that is a primary trigger for arboricultural input on a development site.
<b>NRZ area (m<sup>2</sup>)</b>	The surface area within the NRZ expressed in square meters.
<b>Origin</b>	Aus. native (Native to Australia with no part of its natural range within Victoria) Vic. native (Native to Australia with all or part of its natural range within Victoria) Non-native (No part of its natural range within Australia)
<b>Retention Value</b>	H – High – The tree is worth retention and worth being a constraint on development of the subject site. M – Medium - The tree may be worth retention. L – Low - The tree is not worth retention and should not be a constraint on development of the subject site. A ‘+’ or ‘-’ This means the description is in-between ratings e.g., M+ means the rating is medium to high, M- means the rating is medium to low.
<b>SRZ (m)</b>	Structural Root Zone: The minimum area of roots required for tree stability. The SRZ is measured as a radius out from the centre of the trunk. Expressed in meters.
<b>Significance</b>	L - Low – Declining health or structure. Generally considered to be a weed species. No aesthetic contribution to the landscape. Young and/or easily replaceable. Ubiquitous species. Problematically located within the environment. M - Moderate – Typical health or structure. Not commonly found on weed lists. Some aesthetic contribution to the landscape. Well established. Commonly planted natives and non-natives. H - High – Typical to good health or structure. Native/remnant trees of fair to good condition. Clear aesthetic contribution to the landscape. Trees of exceptional age, size, or condition for their species.
<b>TPZ (m)</b>	Tree Protection Zone. Specified zone above and below ground and at given offsets from the trunk set aside to protect a tree’s roots and crown where these might be damaged by development.
<b>Trunk Structure</b>	G – The tree has no observable structural faults within the stem. F – The tree has structural faults within the stem that could likely be mitigated. The tree has some species typical structural faults within the stem that may become deleterious. P – The tree has structural faults within the stem that likely cannot be mitigated.
<b>Width (m)</b>	W= Estimated or measured width of canopy at its widest point. Expressed in meters.

## Tree Protection Plan (TPP)

Full size scale plans of the following TPPs are attached below.

- Pre-demolition phase TPP
- Pre-construction & Construction Phase TPP - A
- Pre-construction & Construction Phase TPP - B

# TREE PROTECTION PLAN (TPP)

Pre-demolition phase TPP

## Irrigation

An irrigation system must be installed and be adequate to access all retained and impacted trees.

The protected area of the Tree Protection Zone for all retained and impacted trees must be irrigated during summer months (December-February) with 1 litre of clean water for every 1cm of trunk girth, measured at the soil/trunk interface (ground level) on a weekly basis (litres per week = lpw).

Tree	Common Name	DRF(cm)	lpw(l)	Encroachment (m <sup>2</sup> )
1	Holly Oak	98	0	0.00
2	English Elm	89	0	0.00
3	English Elm	119	374	4.15
4	English Elm	146	0	0.00
5	English Elm	89	279	98.67
6	English Elm	92	289	30.01
7	English Elm	121	380	1.02
11	English Elm	156	490	102.57
35	Jacaranda	22	69	1.09
36	Jacaranda	30	0	0.00
37	Jacaranda	21	0	0.00
38	English Elm	62	0	0.00
39	English Elm	74	0	0.00
40	English Elm	57	0	0.00
41	English Elm	68	0	0.00
42	English Elm	53	0	0.00
43	English Elm	53	0	0.00
44	English Elm	65	0	0.00
45	Moreton Bay Fig	58	0	0.00
46	Pin Oak	63	0	0.00
47	English Elm	77	0	0.00
48	English Elm	69	0	0.00
49	English Elm	70	0	0.00
50	English Elm	62	0	0.00
51	English Elm	58	182	35.80
57	Moreton Bay Fig	38	119	1.61
59	Moreton Bay Fig	84	264	10.74
67	Moreton Bay Fig	64	201	3.98
68	Narrow-leaved Black Peppermint	63	0	0.00
69	English Elm	43	0	0.00
70	English Elm	49	0	0.00
71	English Elm	47	0	0.00
72	English Elm	37	0	0.00
73	English Elm	42	0	0.00
74	English Elm	51	0	0.00
75	English Elm	72	0	0.00
76	English Elm	86	0	0.00
77	Sweet Pittosporum	27	0	0.00
78	Sweet Pittosporum	37	0	0.00
79	Sweet Pittosporum	34	0	0.00
80	Lombardy Poplar	57	0	0.00
81	Pin Oak	54	0	0.00
82	Pin Oak	44	0	0.00
83	Jacaranda	41	0	0.00

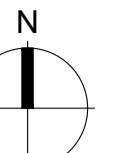
**Restricted activities**  
The following activities are not permitted within the Tree Protection Zone (TPZ) unless approved by the Responsible Authority or as specifically allowed and endorsed within the TPMP:

- Machine excavation including trenching
- Excavation for silt fencing
- Cultivation
- Storage
- Refuelling
- Parking of vehicles and plant fuelling
- Preparation of chemicals, including preparation of cement products
- Dumping of waste
- Wash down and cleaning of equipment
- Placement of fill
- Lighting of fires
- Soil level changes
- Physical damage to the tree
- Temporary or permanent installation of utilities and sign

# 100f St Georges Rd, Fitzroy North VIC 3068

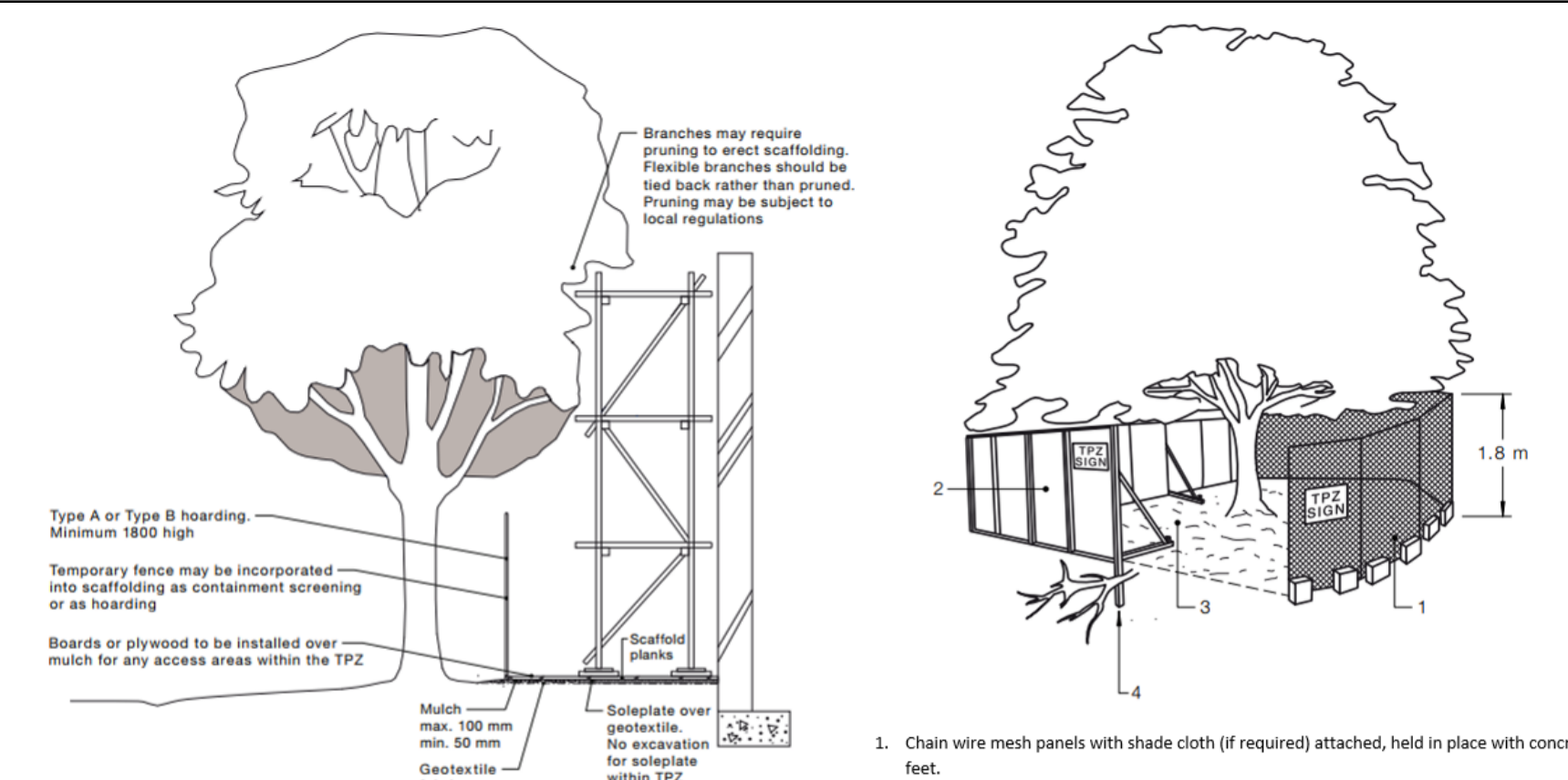
v1.0 02/07/25

SCALE: 1:350  
FORMAT / SIZE: A1



## Legend

- Length Measurement
- Mulch Depth 100mm
- Note
- SRZ
- TPZ
- TPZ Fence
- TPZ Fence - Temporary
- Tree Number



NOTE: Excavation required for the insertion of support posts for tree protection fencing should not involve the severance of any roots greater than 20 mm in diameter, without the prior approval of the project arborist.

## Overview of trees to be retained.

Tree	Common Name	Proposal	SRZ(m)	TPZ(m)
1	Holly Oak	Retain	3.3	10.8
2	English Elm	Retain	3.2	10.1
3	English Elm	Retain	3.6	13.7
4	English Elm	Retain	3.9	15.0
5	English Elm	Retain	3.2	11.2
6	English Elm	Retain	3.2	10.5
7	English Elm	Retain	3.6	13.0
11	English Elm	Retain	4.0	17.5
35	Jacaranda	Retain	1.8	3.0
36	Jacaranda	Retain	2.0	3.2
37	Jacaranda	Retain	1.7	2.5
38	English Elm	Retain	2.7	6.4
39	English Elm	Retain	2.9	8.0
40	English Elm	Retain	2.6	7.0
41	English Elm	Retain	2.8	7.1
42	English Elm	Retain	2.5	6.0
43	English Elm	Retain	2.5	6.0
44	English Elm	Retain	2.8	7.1
45	Moreton Bay Fig	Retain	2.6	5.8
46	Pin Oak	Retain	2.7	6.5
47	English Elm	Retain	3.0	8.7
48	English Elm	Retain	2.8	7.4
49	English Elm	Retain	2.8	7.9
50	English Elm	Retain	2.7	6.1
51	English Elm	Retain	2.6	7.5
57	Moreton Bay Fig	Retain	2.2	4.5
59	Moreton Bay Fig	Retain	3.1	10.5
67	Moreton Bay Fig	Retain	2.7	9.0
68	Narrow-leaved Black Peppermint	Retain	2.7	7.0
69	English Elm	Retain	2.3	4.7
70	English Elm	Retain	2.5	4.2
71	English Elm	Retain	2.4	5.0
72	English Elm	Retain	2.2	3.8
73	English Elm	Retain	2.3	4.2
74	English Elm	Retain	2.5	5.3
75	English Elm	Retain	2.9	7.1
76	English Elm	Retain	3.1	8.0
77	Sweet Pittosporum	Retain	1.9	2.8
78	Sweet Pittosporum	Retain	2.2	4.4
79	Sweet Pittosporum	Retain	2.1	4.1
80	Lombardy Poplar	Retain	2.6	6.8
81	Pin Oak	Retain	2.6	6.5
82	Pin Oak	Retain	2.3	5.3
83	Jacaranda	Retain	2.3	4.9

## Overview of trees to be removed.

Tree	Common Name	Proposal	SRZ(m)	TPZ(m)
8	English Elm	Demolish	3.6	18.8
9	English Elm	Demolish	3.9	21.2
10	English Elm	Demolish	3.8	21.0
12	Lilly-Pilly	Demolish	1.8	2.9
13	Brush Box	Demolish	2.5	8.1
14	Chilean Willow	Demolish	2.3	6.8
15	Chilean Willow	Demolish	2.4	6.1
16	Variegated Pittosporum	Demolish	1.6	2.8
17	Variegated Pittosporum	Demolish	1.7	2.8
18	English Elm	Demolish	2.2	5.3
19	Weeping Lilly-Pilly	Demolish	2.2	5.3
20	Weeping Lilly-Pilly	Demolish	2.2	5.5
21	Weeping Lilly-Pilly	Demolish	2.1	4.6
22	Weeping Lilly-Pilly	Demolish	2.3	5.6
23	Weeping Lilly-Pilly	Demolish	2.7	8.2
24	Jacaranda	Demolish	2.0	4.1
25	Jacaranda	Demolish	2.1	3.5
26	Jacaranda	Demolish	1.9	4.5
27	Jacaranda	Demolish	1.6	2.9
28	Jacaranda	Demolish	1.6	2.8
29	Jacaranda	Demolish	1.9	4.1
30	Jacaranda	Demolish	1.9	3.7
31	Jacaranda	Demolish	1.9	4.7
32	Jacaranda	Demolish	1.9	4.1
33	Jacaranda	Demolish	1.9	4.1
34	Jacaranda	Demolish	1.6	2.8
52	English Elm	Demolish	2.0	3.9
53	Sweet Pittosporum	Demolish	2.2	5.2
54	Sweet Pittosporum	Demolish	1.9	5.0
55	Narrow-leaved Black Peppermint	Demolish	3.5	16.8
56	Brittle Gum	Demolish	2.7	8.5
58	Brittle Gum	Demolish	2.9	10.7
60	English Elm	Demolish	2.4	5.1
61	English Elm	Demolish	2.6	8.1
62	English Elm	Demolish	2.5	7.8
63	Pin Oak	Demolish	2.5	7.6
64	Pin Oak	Demolish	2.7	10.2
65	Chinese Elm	Demolish	1.6	3.0
66	Pin Oak	Demolish	2.7	8.5

TPZ Fence to follow line of curb in this location.

TPZ Fence to follow line of curb in this location.

TPZ Fence to follow line of curb in this location.

TPZ Fence to follow line of curb in this location.

**TREE PROTECTION PLAN (TPP)**

Pre-construction & Construction Phase TPP

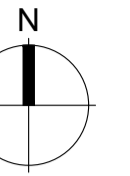
**FITZROY BOWLING AND SPORTING CLUB**

100f St Georges Rd, Fitzroy North VIC 3068

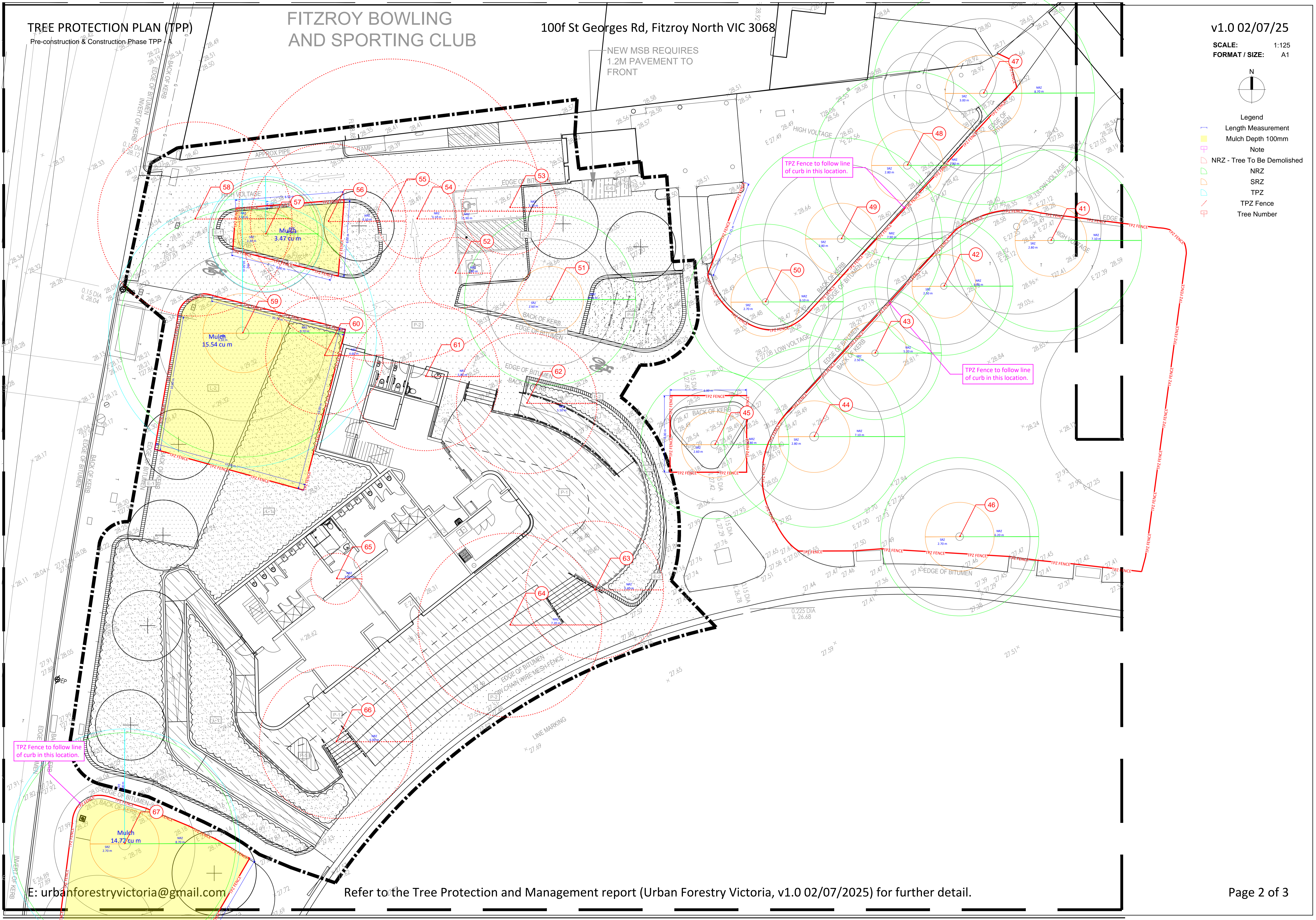
NEW MSB REQUIRES  
1.2M PAVEMENT TO  
FRONT

v1.0 02/07/25

SCALE: 1:125  
FORMAT / SIZE: A1



- Legend
- Length Measurement
  - Mulch Depth 100mm
  - Note
  - NRZ - Tree To Be Demolished
  - NRZ
  - SRZ
  - TPZ
  - TPZ Fence
  - Tree Number



E: urbanforestryvictoria@gmail.com

Refer to the Tree Protection and Management report (Urban Forestry Victoria, v1.0 02/07/2025) for further detail.

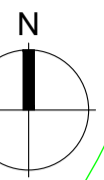
**TREE PROTECTION PLAN (TPP)**

Pre-construction & Construction Phase TPP - B

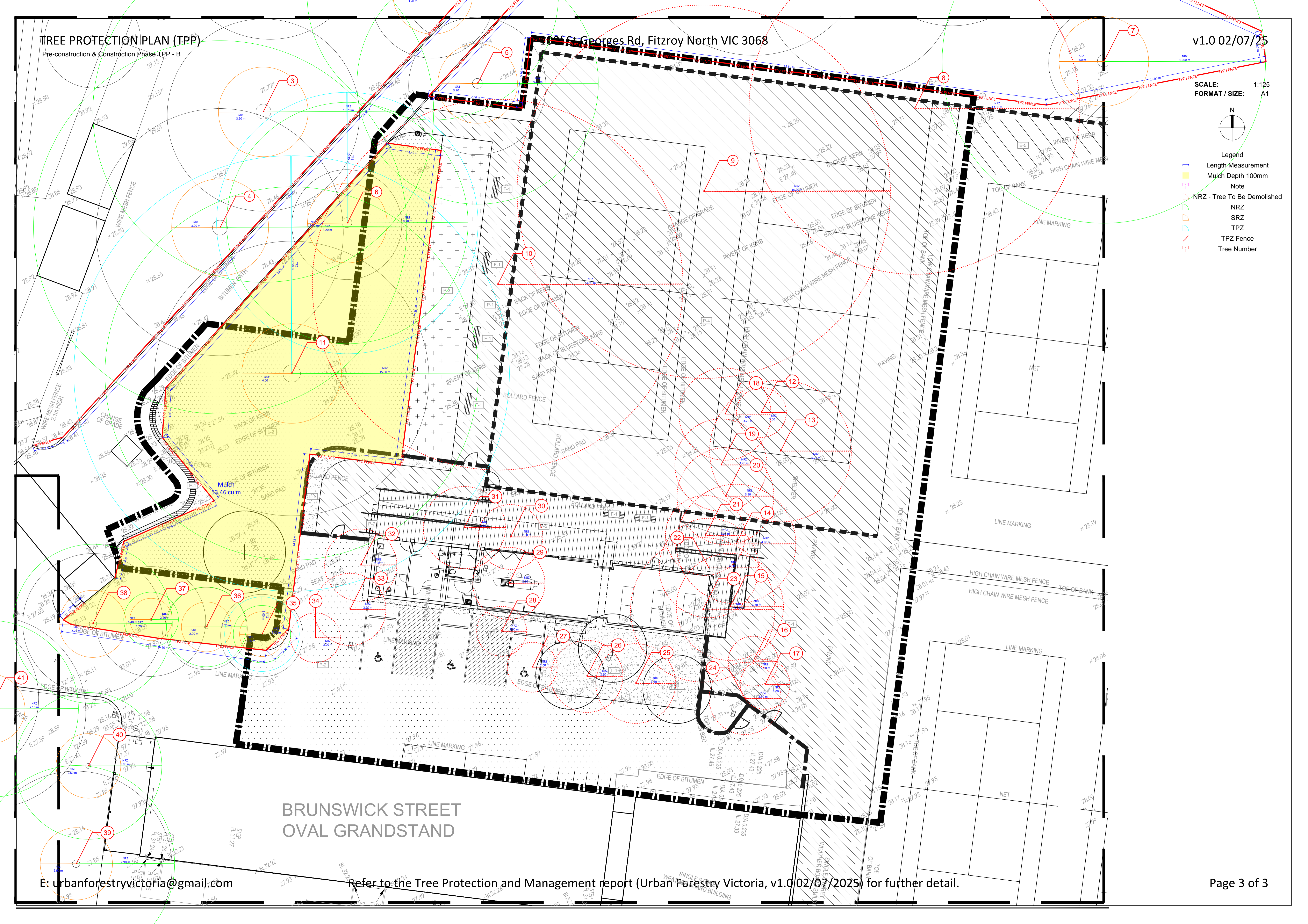
1025 St Georges Rd, Fitzroy North VIC 3068

v1.0 02/07/25

SCALE: 1:125  
FORMAT / SIZE: A1



- Legend
- Length Measurement
  - Mulch Depth 100mm
  - Note
  - NRZ - Tree To Be Demolished
  - SRZ
  - TPZ Fence
  - Tree Number



Mulch  
33.46 cu m

**BRUNSWICK STREET  
OVAL GRANDSTAND**