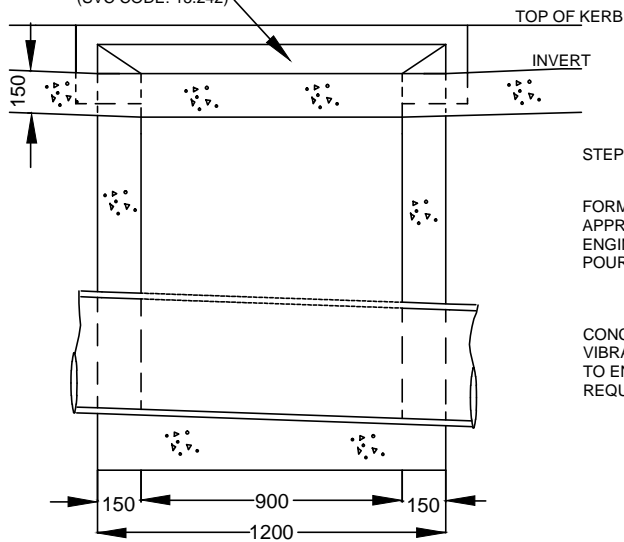
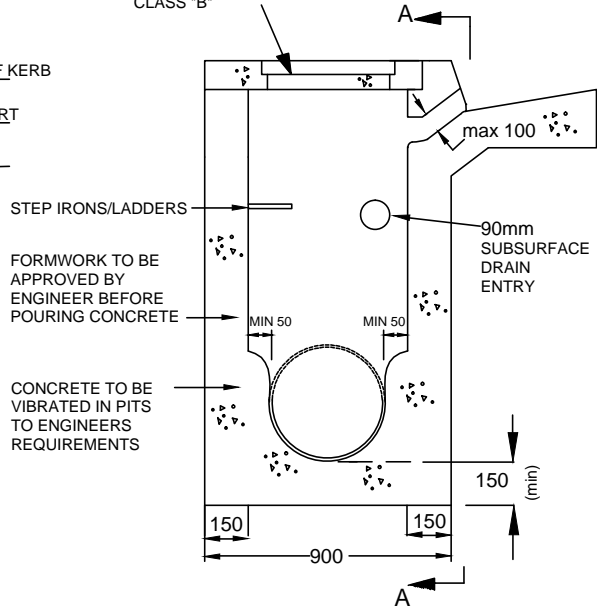


SHERBROOKE PRECAST LINTEL
CHARCOAL COLOUR (SVC CODE : 15.375)
OR CHARCOAL COLOUR FITZROY
LINTEL FOR 300 KERB STONES
(SVC CODE: 15.242)

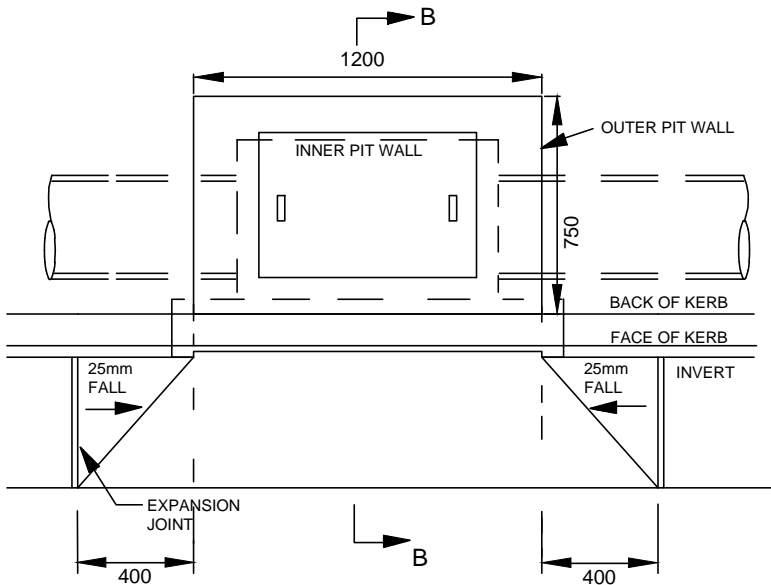


SECTION A-A

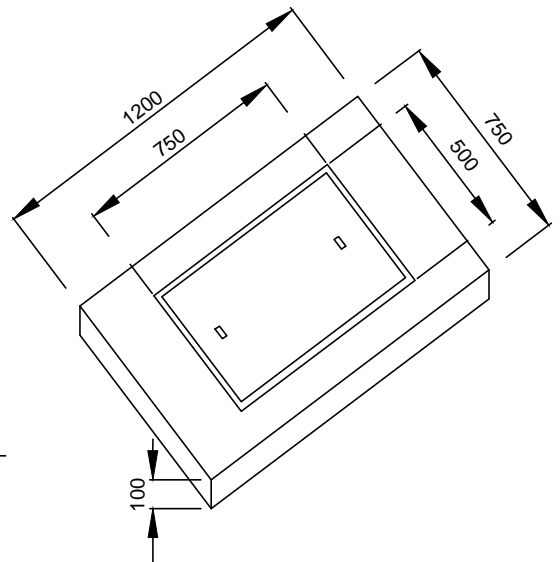
1200*750 CHARCOAL COLOUR
WITH INVERT LID.
OR FRP ECOLITE SOLID COVER
CLASS "B"



SECTION B-B



PLAN



SIDE ENTRY FRAME
AND INSERT

GENERAL NOTES

1. ALL CONCRETE SHALL BE F'c 25MPa AT 28 DAYS.
2. PITS DEEPER THAN 750mm SHALL BE FITTED WITH GALVANISED STEP IRONS (@ 300mm C.T.S) REFER TO DRAWING YSD212 FOR DETAILS.
3. THE FLOOR OF THE PIT SHALL BE FORMED UP TO AT LEAST THE OVERT OF PIPE.
4. CONCRETE TO BE VIBRATED IN PITS TO ENGINEER'S SATISFACTION.
5. CONCRETE TO BE POURED INTO PITS DIRECTLY OUT OF SUPPLY VEHICLES.
6. BEDDING MATERIAL SHALL BE 100mm COMPACTED THICKNESS OF CLASS 2 C.R.
7. F72 REINFORCEMENT IN WALLS OVER 2m DEEP.
8. ALL LINTELS TO BE CHARCOAL COLOUR.
9. ALL PIT SURROUNDS TO BE CHARCOAL COLOUR.
10. S.V.C. P/L PRODUCT CODE FOR THE COVER AND LID IS 14.070 OR APPROVED EQUIVALENT. OR FIBRE REINFORCED PIT COVER (ECOLITE) GREY CLASS"B" IS AVAILABLE FROM R&S GRATING AT sale@grating.com.au. EQUAL ALTERNATIVE PRODUCTS MAY ALSO BE CONSIDERED BY COUNCIL'S ENGINEER.

Yarra Standard: YSD209
Drawing Title:

SIDE ENTRY PIT WITH NON VEHICLE
LOADING COVER

Scale at A4 N.T.S

| REV | DATE | DRAWN BY |
|-----|----------|----------|
| A | 30/04/12 | DKC |
| B | 26/10/17 | HL |
| | | |
| | | |
| | | |

