

## Cooper Knitting Factory (former) Statement of Significance

<b>Heritage Place:</b>	760-764 Heidelberg Road, Alphington	<b>PS ref no:</b>	HO455
------------------------	-------------------------------------	-------------------	-------

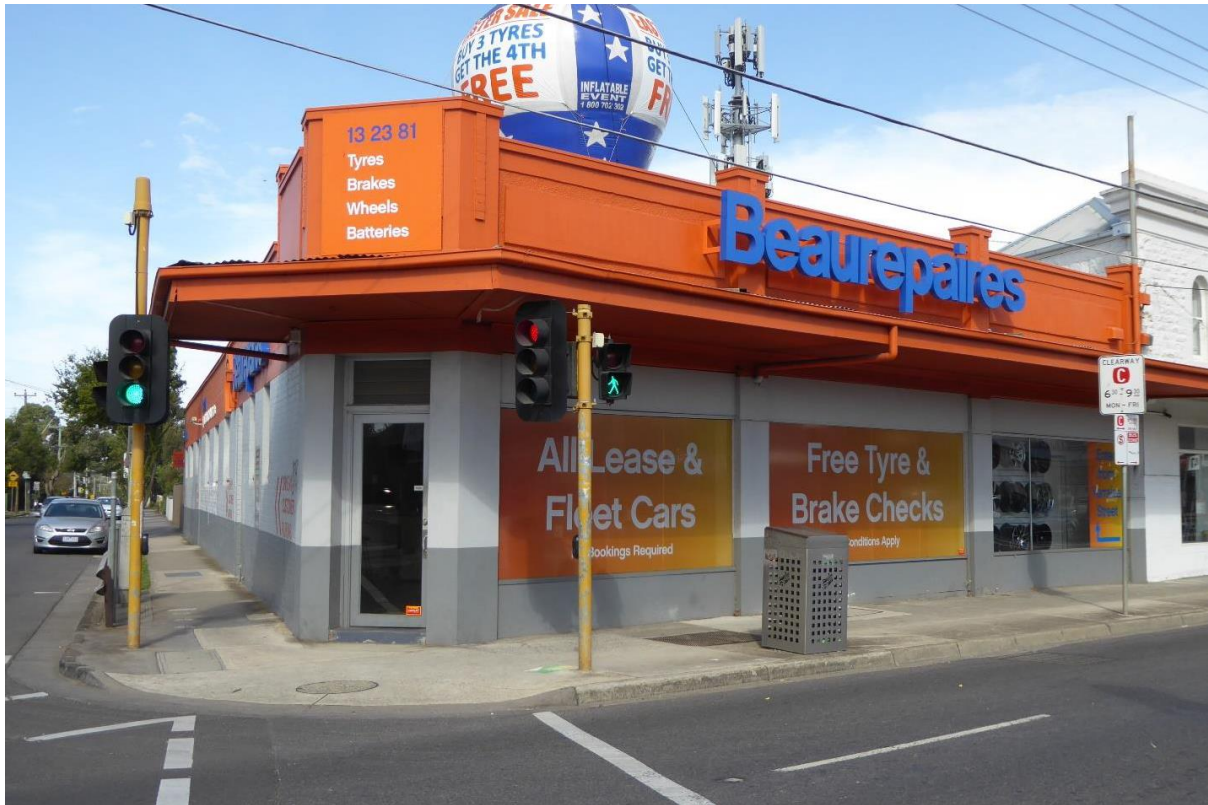


Figure 1: 760-764 Heidelberg Road, Alphington

### What is significant?

The single storey brick building at 760-764 Heidelberg Road, Alphington, constructed 1922, with additions made during the late 1930s and early 1940s.

Significant aspects include the Heidelberg Road and Yarralea Street facades including brick parapet, visible gable roof sections (primarily to the east side), chamfered corner entrance, concrete lintels, pattern of openings and shopfronts, canopy, and remnant wall moulding (west end of north elevation).

### How is it significant?

The single storey building at 760-764 Heidelberg Road, Alphington – the former A. Cooper Knitting factory - is of local historical and aesthetic significance to the City of Yarra.

### Why is it significant?

Initially constructed as three premises in 1922, the single storey building at 760-764 Heidelberg Road, Alphington was expanded and later consolidated by A. Cooper Knitting Manufacturer. It is representative of the commercial and industrial development that occurred during the Interwar period along Heidelberg Road, and in particular was one of a few knitting enterprises that were established along Heidelberg Road at this time. The rapid expansion of the building during the late 1930s and early 1940s is indicative of the important role of the local knitting industry during WWII. (Criterion A)

The single storey building is aesthetically significant as an intact example of an Interwar period building constructed on a prominent corner site. The brick building is distinguished by its parapet and projecting piers articulated with a combination of smooth and roughcast render contrasting with variations in the brickwork. The original pattern of openings, shopfront division, and canopy remains mostly intact. (Criterion E)

**Primary source**

---

*Heidelberg Road Heritage Review (stage 2) 2019 – recommendations & citation for proposed heritage overlays*