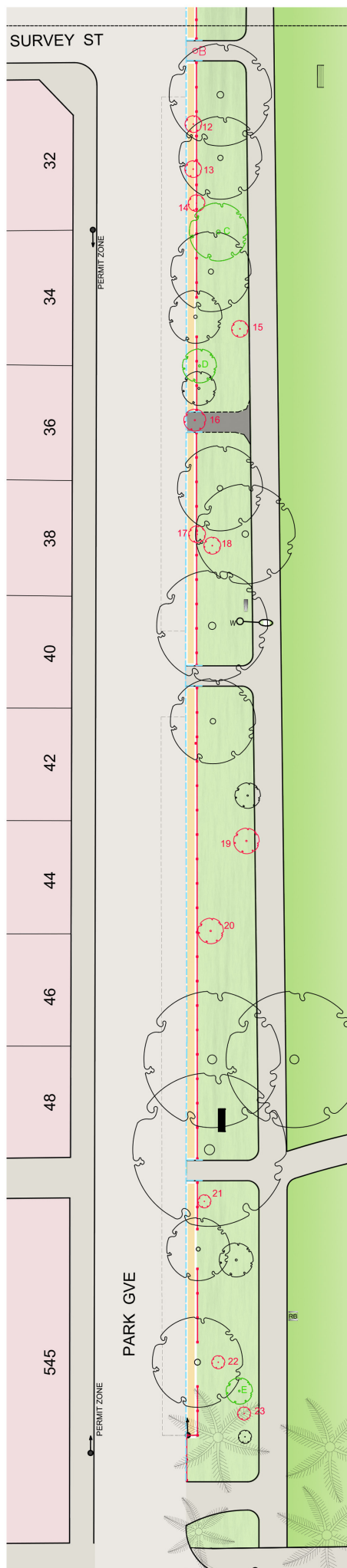


PARK GROVE - north end



PARK GROVE - south end

Burnley Park / Park Grove tree works

Tree Species	Common Name	Tree No.	Reason for removal
Trees to Remove			
<i>Acacia implexa</i>	Lightwood	1	Poor health
<i>Acacia implexa</i>	Lightwood	2	Poor structure
<i>Melia azedarach</i>	White Cedar	3	Poor structure
<i>Fraxinus angustifolia</i>	Desert Ash	4	Location / weed species
<i>Banksia sp.</i>	Banksia	5	Dead
<i>Acacia implexa</i>	Lightwood	6	Dead
<i>Acacia implexa</i>	Lightwood	7	Poor health
<i>Acacia implexa</i>	Lightwood	8	Dead
<i>Acacia implexa</i>	Lightwood	9	Poor health
<i>Acacia implexa</i>	Lightwood	10	Dead
<i>Eucalyptus cladocalyx</i>	Sugar Gum	11	Sucker growth
<i>Acacia implexa</i>	Lightwood	12	Dead
<i>Acacia implexa</i>	Lightwood	13	Dead
<i>Acacia implexa</i>	Lightwood	14	Dead
<i>Acacia implexa</i>	Lightwood	15	Dead
<i>Acacia sp.</i>	Wattle	16	Location / Poor health
<i>Callistemon sp.</i>	Bottlebrush	17	Location
<i>Acacia implexa</i>	Lightwood	18	Poor health
<i>Acacia sp.</i>	Wattle	19	Poor structure
<i>Acacia implexa</i>	Lightwood	20	Poor health
<i>Acacia implexa</i>	Lightwood	21	Dead
<i>Acacia implexa</i>	Lightwood	22	Dead
<i>Acacia implexa</i>	Lightwood	23	Dead

Trees to Prune			
<i>Melia azedarach</i>	White Cedar	A	Over hanging
<i>Melia azedarach</i>	White Cedar	B	Over hanging
<i>Eucalyptus melliodora</i>	Yellow Box	C	Cracked low branch
<i>Acacia howittii</i>	Sticky Wattle	D	Over hanging
<i>Corymbia maculata</i>	Spotted Gum	E	3 stems at base, remove 2



Post and Rail Fence - example

legend

- existing trees 
- trees for pruning 
- trees for removal 
- new mulched area 
- new bluestone kerb 
- new post & rail fence 
- new access path 

