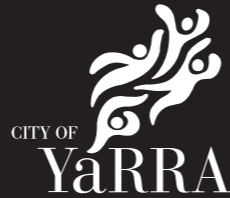


# Nicholson Village Streetscape Upgrades



## The things we consider when locating trees in a street:

- width and orientation to the street
- overhead and underground services
- proximity to buildings
- pedestrian access (a minimum clear access of 1.5 metres is required on footpaths)
- street lighting
- access to properties (driveways and gates)
- neighbouring private trees
- car parking
- street signage (e.g. parking and stop/give way signs)
- street character

## Mature size of tree

Medium to large trees are planted on the roadway where there is more space to grow larger canopy trees. Small trees are preferred for footpath planting so that pedestrian access is maintained and to minimise possible damage.

## Drought tolerance and hardiness

Trees are selected which do not require supplementary watering after the establishment period and can survive in a harsh street environment.

## Damage potential

Species are selected to minimise risk of property damage or public nuisance.

## Cohesive streetscape

A maximum of two tree species in a street is preferred.

## Light/Shade

Trees with larger canopies provide more shade and a cooling effect for the street. The tree canopy cover for the street is more important than the number of trees. For example, four large roadside trees are more beneficial than six small footpath trees. Deciduous trees provide shade in summer and allow sunshine and light to penetrate during the winter months. Native trees provide more benefit to wildlife.

## Tree removals

A tree that is identified as being of poor health or structure, or of a species that is considered problematic, would be removed at the discretion of our arborists. It is preferable that any tree that is removed is replaced with a new healthy tree that is appropriate for its location.

## Traffic calming potential

Roadside trees have been proven to contribute to calming traffic in a street and improving conditions for pedestrians and cyclists. Where the road is wide enough and there is parallel parking, centre road trees may be considered.

## Parking

Trees are located to minimise the impact on parking.

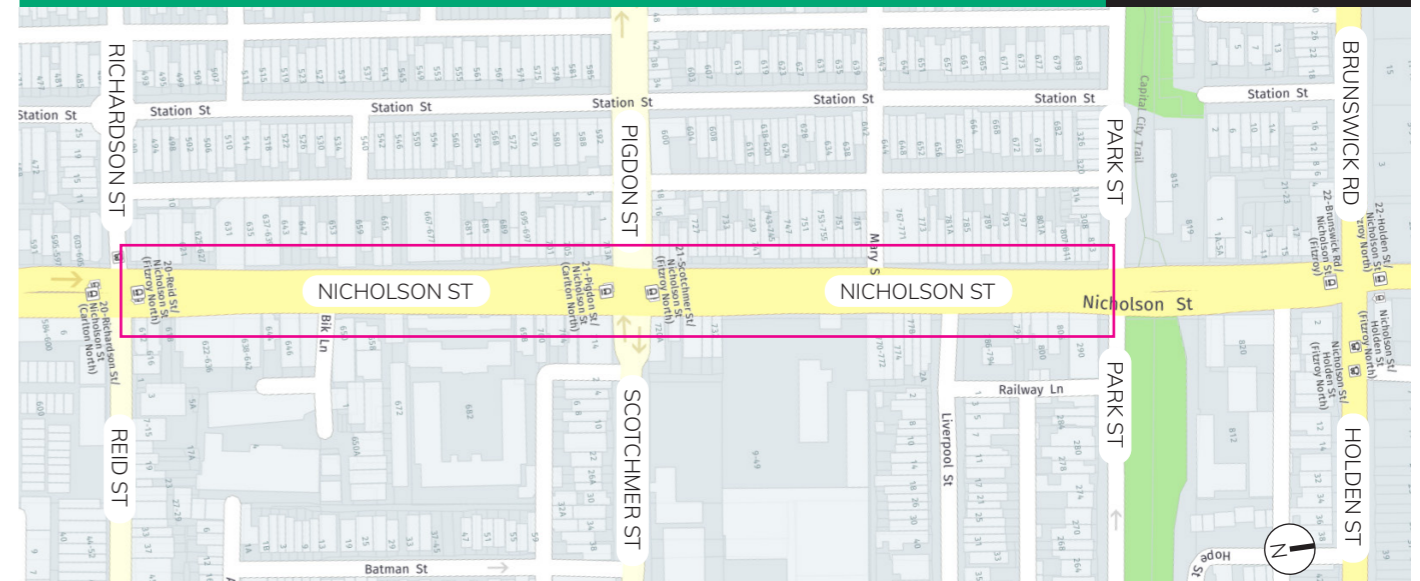
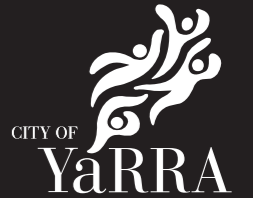
## Tree maintenance

Trees are maintained for two years to establish (by watering and pruning). All trees are then pruned on a two year cycle as required. Residents do not need to look after street trees, but please contact us if they appear sick or have been vandalised.

## Street cleaning

Leaf, fruit, bark and branch drop are considered when selecting tree species, to meet current street cleansing requirements.

# Nicholson Village Streetscape Upgrades



We are conducting streetscape upgrades in Nicholson St (Carlton North and Fitzroy North).

## Background information

The Nicholson Village activity centre has seen a lot of disruption associated with the Route 96 tram stop upgrades and the ongoing works have left the footpath in a poor condition. As such, Council is undertaking streetscape upgrades to improve the look and feel of the precinct.

## What is being proposed?

The upgrade works include the following:

- New seating (completed in Dec 2021)
- Garden bed upgrades (completed in May 2022)
- Tree replacement (mid-late 2022)
- New precinct signage (mid-late 2022)
- Footpath re-asphalting (mid-late 2022)

Further information about these upgrades is provided overleaf.

## Where are the works happening?

The scope of works is along Nicholson Street between Richardson/Reid streets and Park Street. This is shown on the map above.

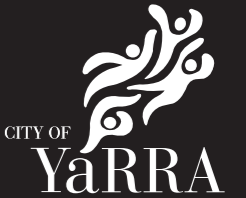
## When will the works start?

The works program is still being finalised for the second half of 2022. You will be notified again prior to works commencing.

## Further information

If you would like to know more about this project, please contact Daniel Perrone on **9205 5555** or **info@yarracity.vic.gov.au**

# Proposed Upgrades



## Seating Upgrades

Completed Dec 2021

The existing seats on Nicholson St were reaching the end of their life and were upgraded to the current Yarra standard seats. The new seats provide backs and armrests to improve accessibility, as well as improve the aesthetic of the precinct.



## Garden Bed Upgrades

Completed May 2022

We have recently undertaken garden bed renewal to existing garden beds at Scotchmer St and Liverpool St, and have created two new garden beds at the intersection of Richardson and Nicholson streets.

The new native planting palette will provide greater biodiversity as well as create a consistent look and feel to the precinct.



## Visual Identity & Precinct Signage

A new visual identity has been developed for the Nicholson Village precinct and is already being utilised by many traders. This branding will continue to be rolled out to create awareness of Nicholson Village as a shopping precinct, encouraging users to spend more time in the area. For more information visit [everydaynicholson.com.au](http://everydaynicholson.com.au)

Additional informational signage will also be installed along key pedestrian & cyclist routes to encourage active modes of transport.



## Footpath Re-surfacing

Footpath condition varies across the precinct. We will be conducting asphalt re-surfacing to improve pedestrian safety and amenity throughout the precinct.

We will be coordinating asphalt re-surfacing in sections with other works to minimise disruption.

## Tree Replacements

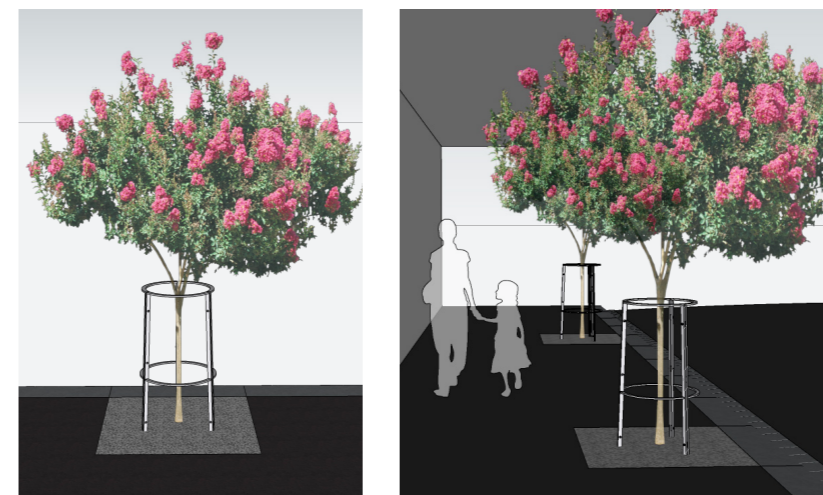
The existing Bay trees along Nicholson Street will be replaced with Crepe Myrtles to provide feature foliage and seasonal colour. Four Plane trees located in front of the Transdev bus depot will also need to be replaced due to ongoing footpath damage and power-line clearance requirements.

Custom designed tree guards will be installed to protect the trees, and porous pavement material will be provided within the tree squares to ensure a safe and neat finish to the footpath. A consistent tree species and tree guard will provide a unifying element throughout the Nicholson Village precinct, enhancing the visual identity of the precinct.

Approximately 36 trees are to be replaced throughout the Nicholson Village precinct.



Existing: Bay tree and guard



Proposed: Crepe Myrtle and tree guard

## Tree Information

### SPECIES

Crepe Myrtle hybrid  
*Lagerstoemia 'Zuni'*

**POTENTIAL HEIGHT\*** 4 metres

**POTENTIAL WIDTH\*** 3 metres

**GROWTH RATE** Medium

**MATURE SHAPE** Rounded

**TYPE** Deciduous

**LONGEVITY** Medium

**FRUIT/LEAF LITTER** Low

**BARK** Exfoliating to reveal light greyish-brown. Young stems are red

**FLOWERS** Abundant masses of dark pink to lavender flowers from mid-summer to early autumn.

**TOLERANCES** Tolerant of clay soils; drought tolerant; insect resistant; low branch breakage rate

### EXAMPLES

Clifton Street, Clifton Hill

\*estimated tree size at maturity; may vary due to rainfall and individual site conditions.

