

Cambridge Street Reserve 2024

Introduction

The following preliminary concept package has been prepared in response to some community concern about the extent of junior play opportunities in the Collingwood area. The design and supporting information included within provides a possible direction for the integration additional play elements which do not compromise the integrity of the design and the broader and primary project objectives.

Cambridge Street Reserve provides a space that welcomes, includes and provides amenity for the 'whole' community. Access to open space and play assists in improving the health and well being across the whole community regardless of age or ability.

The opportunities for children's play includes:

- A basket swing that can accommodate groups of children or carers and their children at any one time and provides social interaction and sharing opportunities.
- The balance beam enables children and people of all ages to experiment with balancing and falling off in a safe environment. It can stimulate creativity with games and moves initiated by the users to make up their own rules and boundaries.
- The pull up bar provides exercise options for a range of uses and users.
- Children can ride their trikes and wheeled devices on the hard surfaces, roll down the grass hill, teeter around the raised edgings, play games on the grass with family and friends, kick a ball, watch and social with others, picnic on the grass, play with the loose mulch, hug a tree, experience the patterns from the sun shining through the leaves on the mature trees, smell and feel the plants.



Cambridge Street Reserve - Pre 2023 Redevelopment

The Yarra Open Space Strategy 2020 is the guiding document for all open spaces in Yarra. Excerpt below:

'Collingwood Demographics – Open Space needs to meet the needs of both resident and worker populations.

A 97 per cent increase in the resident population is forecast with an additional 2,990 residents by 2031 (Collingwood B – increase from 3,075 to 6,065).

Review of the population forecasts to 2041 indicates that population growth will slow to 27 per cent. A 48 per cent increase in the worker population is estimated with an additional 2,407 workers by 2031 (Collingwood B – increase from 5,058 to 7,464).

The forecast change in demographics between 2011 and 2016 shows a proportional increase in the 18 to 34 age ranges and a decline in younger people and those in the older age range as well. This means that open space design needs to appeal to the 18 to 34 age range as well as providing for all age groups. Given there has also been an increase in lone person households and couples without children, open space will need to focus on providing facilities that encourage socialising in open space including seating areas and picnic facilities. There will also be a need to promote fitness and exercise by increasing the diversity of facilities that encourage

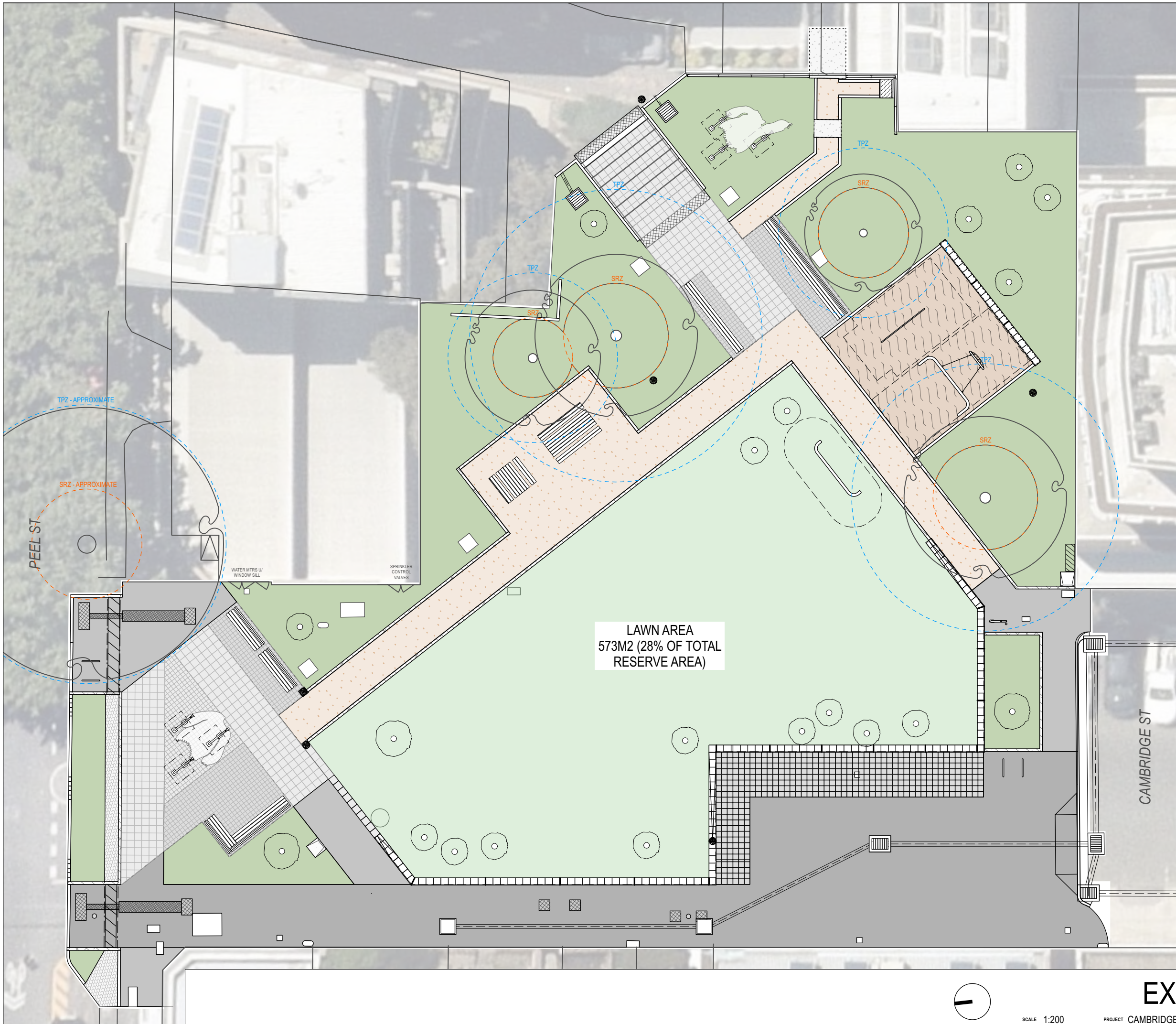


Cambridge Street Reserve Expansion - 2023

Design Principles

The following principles have been established to ensure the original design objectives and parks cohesion and design narrative is not lost in addressing the additional needs of this section of the community.

1. Scale and Integration (design, material and spatial)
2. Opportunities to build on the sculptural qualities and narrative in the play elements
3. Visual impact and maintaining view lines
4. Catering for a range of ages and abilities including intergenerational opportunities
5. Maintaining the balance between play and passive recreation opportunities
6. Maintaining a focus on queer spacing through the avoidance of over emphasis on family/sis/hetero oriented space.



LAWN AREA
573M2 (28% OF TOTAL
RESERVE AREA)

PAVEMENTS AND SURFACES

- INSITU CONCRETE PAVING
- UNIT PAVER TYPE 1 - PRECAST CONCRETE, 400 X 400
- UNIT PAVER TYPE 2 - PRECAST CONCRETE, 200 X 200
- UNIT PAVER TYPE 2A - PRECAST CONCRETE RUMBLE STRIP
- UNIT PAVER TYPE 3 - BLUESTONE PITCHER BEACHING
- UNIT PAVER TYPE 4 - CONTRAST CONCRETE STRIP
- ASPHALT PEDESTRIAN GRADE, REFER COUNCIL DETAIL CD11.1
- ASPHALT VEHICLE GRADE, REFER COUNCIL DETAIL CD11.1
- GRAVEL PAVING TYPE 1
- ORGANIC TIMBER SOFTFALL MULCH
- WARNING TGSi PAVERS PAVERS AND INSTALLATION TO COMPLY WITH AS1428.4
- DIRECTIONAL TGSi PAVERS PAVERS AND INSTALLATION TO COMPLY WITH AS1428.4
- GARDEN BED PLANTING

FURNITURE & FIXTURES

- BIKE RACK, REFER COUNCIL DETAIL CD11.2
- RUBBISH BIN, REFER COUNCIL DETAIL CD11.2
- DRINKING FOUNTAIN, REFER COUNCIL DETAIL CD11.2
- TIMBER BENCH, CUSTOM
- TIMBER SEAT WITH BACK, CUSTOM
- TIMBER SEAT WITH BACK AND ARMRESTS, CUSTOM
- TIMBER PICNIC TABLE (WITH BENCHES / SEATS), CUSTOM
- FLYING JUMPER SCULPTURE TYPE 1, REFER ARTIST'S DRAWINGS
- FLYING JUMPER SCULPTURE TYPE 2, REFER ARTIST'S DRAWINGS
- RECLINING JUMPER SCULPTURE, REFER ARTIST'S DRAWINGS
- CONCRETE WOOL FINIALS, REFER ARTIST'S DRAWINGS

PLAY / EXERCISE EQUIPMENT

- FALLZONE
- BALANCE BEAM, CUSTOM
- NEST SWING, CUSTOM
- CHIN UP BARS, CUSTOM

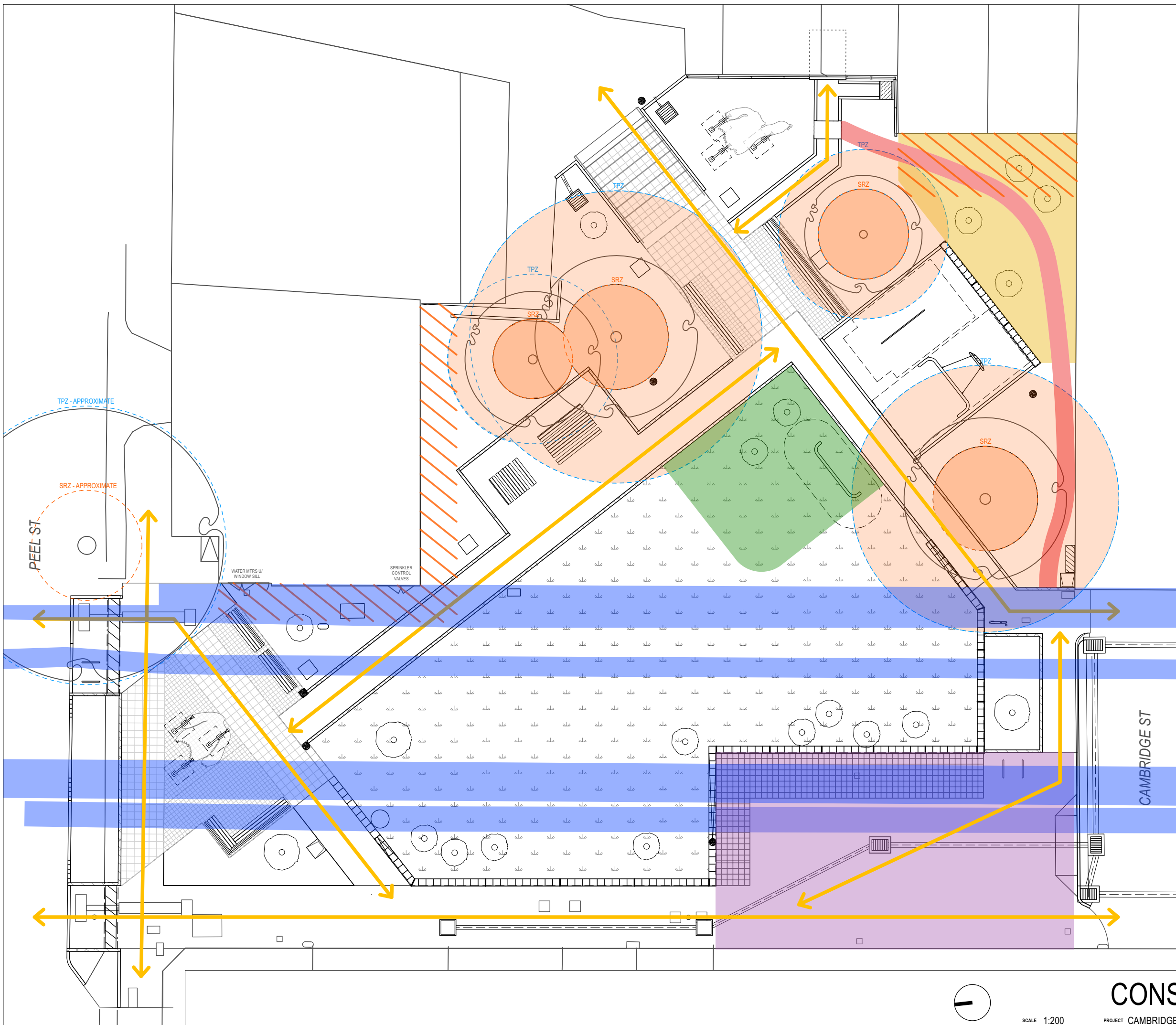


SCALE 1:200

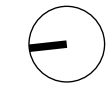
PROJECT CAMBRIDGE STREET RESERVE EXPANSION PROJECT

PROJECT NO. 20067

EXISTING DESIGN LD02



- SITE CONSTRAINTS**
- CRITICAL FLOW PATH (HEAVY RAIN EVENTS)
 - LOW VISIBILITY
 - MANDATORY SHARED SPACE AND MAINTENANCE VEHICLE ACCESS
 - SERVICE CORRIDORS
 - RESIDENTIAL & COMMERCIAL BUFFER
 - SRZ - STRUCTURAL ROOT ZONE
 - TPZ - TREE PROTECTION ZONE
 - PATHS OF TRAVEL
 - ADDITIONAL PLAY OPPORTUNITY



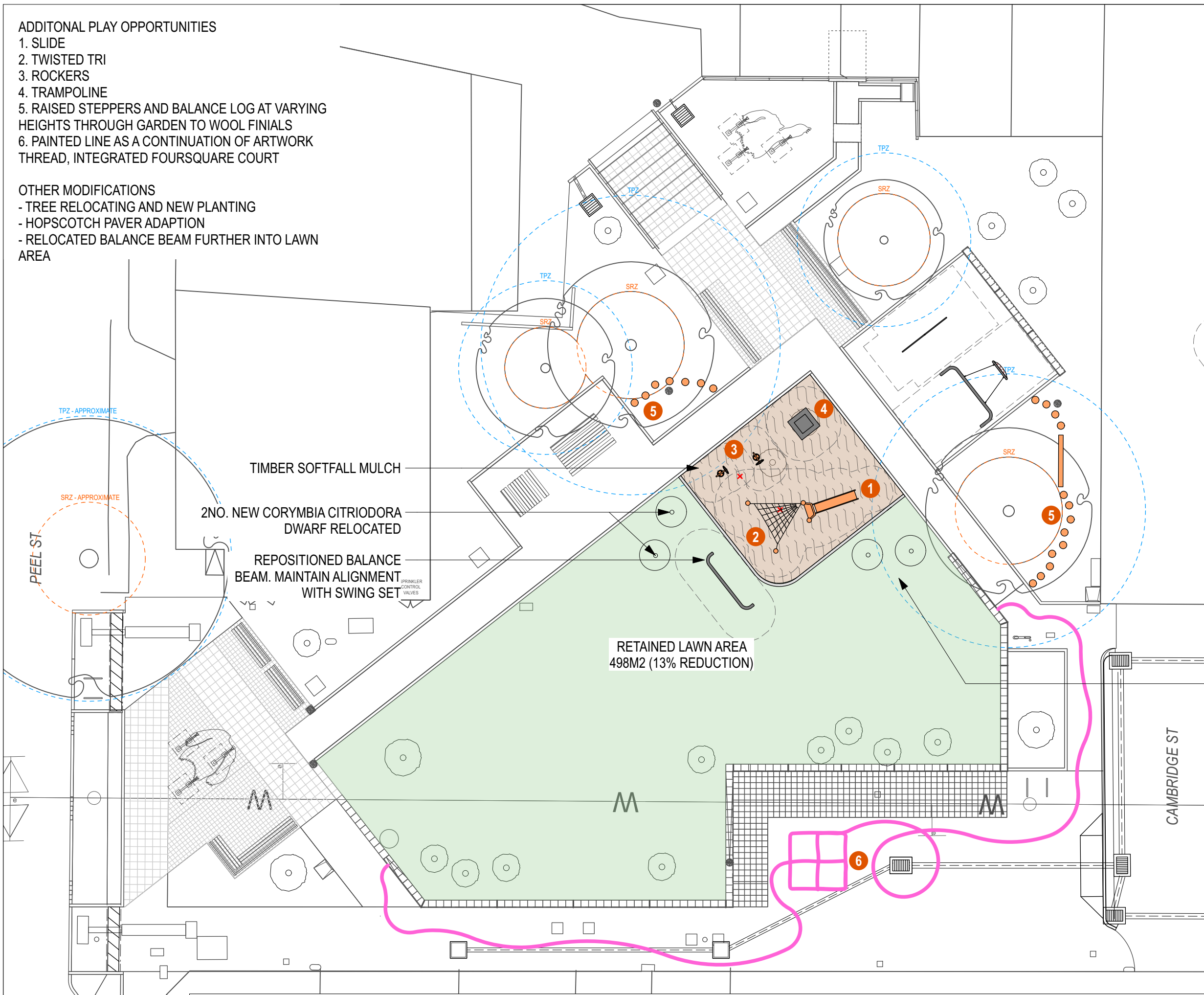
CONSTRAINTS PLAN LD03

ADDITIONAL PLAY OPPORTUNITIES

1. SLIDE
2. TWISTED TRI
3. ROCKERS
4. TRAMPOLINE
5. RAISED STEPPERS AND BALANCE LOG AT VARYING HEIGHTS THROUGH GARDEN TO WOOL FINIALS
6. PAINTED LINE AS A CONTINUATION OF ARTWORK THREAD, INTEGRATED FOURSQUARE COURT

OTHER MODIFICATIONS

- TREE RELOCATING AND NEW PLANTING
- HOPSCOTCH PAVER ADAPTION
- RELOCATED BALANCE BEAM FURTHER INTO LAWN AREA



PLAY EQUIPMENT & OPPORTUNITIES

EXISTING FORMAL PLAY

- NEST SWING
- PULL-UP / MONKEY BARS
- BALANCE BEAM

EXISTING INFORMAL PLAY

- OPEN SPACE GRASS AREA WITH HILL
- LOOP PATH
- PAVED SURFACE AREA (SOUTH WEST CORNER)
- WALLS FOR CLIMBING, BALANCING, ETC

ADDITIONAL PLAY - FORMAL

- SLIDE
- LADDER
- CLIMBING NET
- TRAMPOLINE
- ROCKERS

ADDITIONAL PLAY - NATURE PLAY

- TIMBER STEPPERS AND BALANCE LOG TRAILS

ADDITIONAL PLAY - INTERPRETIVE

- FOUR SQUARE / HAND BALL

2NO. CORYMBIA CITRIODORA DWARF NEW



ADDITIONAL PLAY CONCEPT LD04

SCALE 1:200

PROJECT CAMBRIDGE STREET RESERVE EXPANSION PROJECT

PROJECT NO. 20067



Timber Steppers and Balance Log



Painted Continuation of Woolen Thread and Four Square Linework



Trampoline



Slide with Twisted Tri



Rocker (City Hopper)

Note: Images are indicative only.