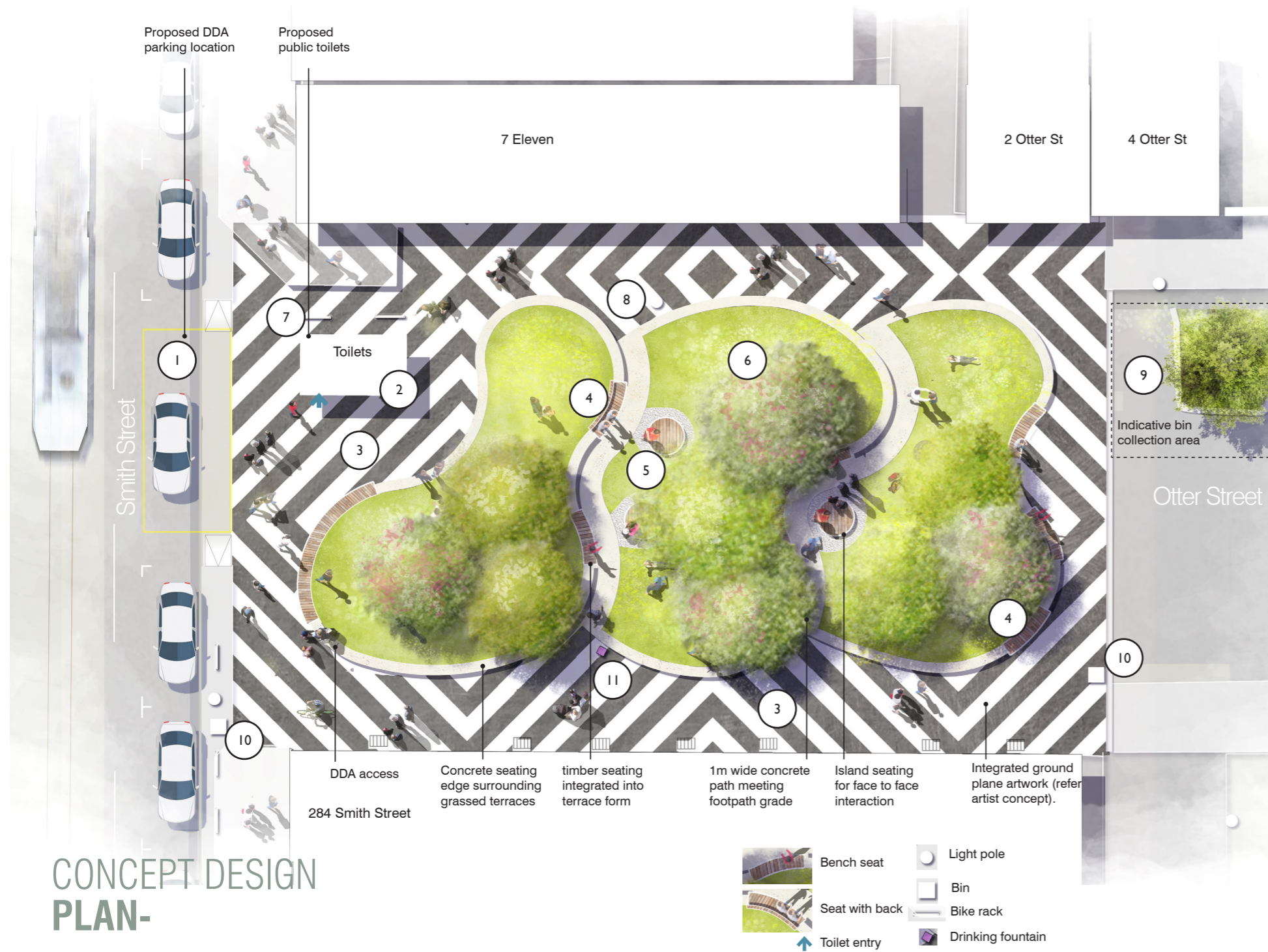




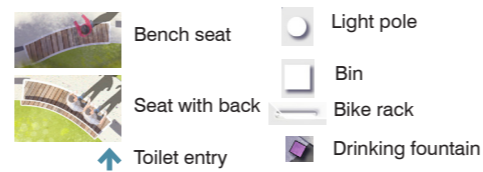
NEW OTTER STREET PARK
FINAL CONCEPT DESIGN PROPOSAL
COUNCILLOR UPDATE FEBRUARY 2022



CONCEPT DESIGN PLAN-

LEGEND

1. Disabled Access Parking Bay
2. New Disabled Access Toilet
3. Reko Rennie's geometric ground plane patterning
4. Timber seating integrated into terrace form
5. Island seating for face-to-face interaction
6. Open lawn area
7. Bike racks
8. Relocated citipower pole
9. Indicative bin collection area
10. Bin
11. Drinking fountain



OTTER STREET - AN INNER CITY PARK

The consultation results around the draft concept plan for Otter Street revealed that the community is very passionate about new greenery in their neighbourhood. Whether it's to take a breather, lie on some grass or catch up with a friend under a tree, the idea of a new pocket park at Otter Street was overwhelmingly supported.

Set against the backdrop of bustling Smith Street, the park design was developed surrounding several key thematic responses to site and context, namely: topography, respite/gathering, urban nature and art. Site constraints such as topography were a key consideration driving the landform, taking advantage of key views. Three grassed terraces with integrated seating offer places to sit and gather. The park provides respite and a slice of nature in a highly urban setting.

The landscape design also integrates the work of acclaimed artist, Reko Rennie, whose signature geometric shaped patterning on the ground plane draws on the notion of connection and identity. The Otter Street pocket park will be a vibrant, green place for the Collingwood community to gather and connect.

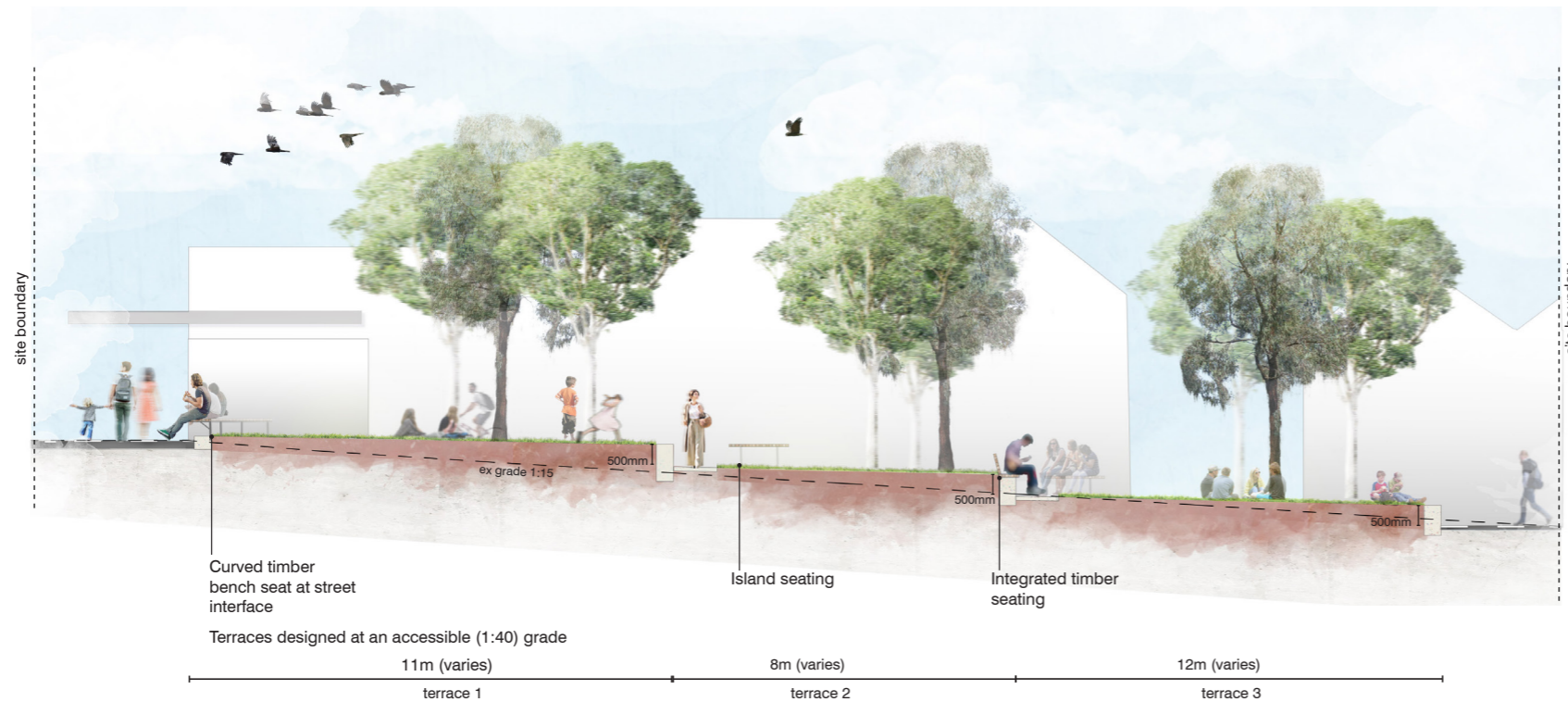
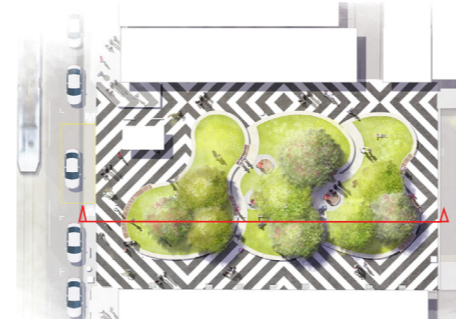
MAIN CHANGES FROM DRAFT TO FINAL CONCEPT PLANS

Based on the consultation results, we have:

- Expanded the park across the Right of Way on the northern side of Otter Street to create more lawn and reduce the amount of paving.
- Reduced the number of terraces from four to three to provide larger, more useable lawn areas and eliminate one of the north/south paths, further reducing the amount of paving.
- Reviewed tree planting and outlined the character of new trees (medium sized, Australian Native evergreen species). Locations have been selected to ensure provision of winter sun and summer shade.

Associated works

- In response to traffic concerns, improvement works are planned for the intersection of Otter and Bedford Streets to create a more pedestrian friendly environment. Adjustments to the intersection of Otter and Wellington Streets will also be undertaken to improve access into and out of Otter Street for buses.



SECTION - LOOKING NORTH TOWARDS 7-ELEVEN



ARTISTIC RENDER - VIEW LOOKING WEST TOWARDS SMITH STREET

DESIGN FEATURES

The final plan reflects feedback from the community over several rounds of consultation. It includes the following key features:

Lawn and trees

Three large lawn terraces are proposed which are designed to encourage people to pause, rest and gather. Medium sized Australian Native evergreen trees have been selected for the space and have been located to provide winter sun and summer shade. They will be a signature element of the park and create a human scale in a built-up urban setting.

Artwork

The indigenous artist, Reko Rennie, has been engaged to work with TCL to produce an artwork that is fully integrated into the park design. Rennie is an established Melbourne artist whose work is characterised by vibrant colours, diamond shaped designs and repetitive patterning. His artwork provokes discussion surrounding Indigenous culture and identity in contemporary urban environments.

For the Otter Street project, Rennie's artwork will occupy the ground plane of the park. The text 'Always was, always will be' will be incorporated into the artwork, along with the Wurundjeri wording 'wurundjeri bik', meaning 'wurundjeri land.'

A place for gathering and connection

A key feature of the concept plan is the many and varied seating options it provides. These will allow the space to be used by both individuals and groups at the same time. The three lawn terraces will incorporate concrete seating edges to enable people to prop and relax. Some bespoke timber seating will also be incorporated.

Safety and amenity

Crime Prevention Through Environmental Design (CPTED) Principles have informed the proposed layout of the park. The design ensures that clear sightlines through the site are maintained. The existing footpaths to the north and south of the site have been widened to retain permeability and connections through to Smith Street. A lighting plan is being developed to ensure the space is inviting and safe at all times. The impact of light spill on adjacent residences has also been considered.

Accessibility

The principles of universal design and accessibility have been considered in the design. The existing toilet will be replaced with a new DDA accessible public toilet. The existing DDA parking bay on Otter Street will be relocated to Smith Street.

Parking

The new park involves a net loss of 2 parking spaces. One disabled access bay (indented on Smith Street) and three 2 hour ticketed bays have been relocated along the park's Smith Street frontage. One car share bay will be relocated nearby.