
YarraBend, Alphington Town Planning Report

60 Chandler Highway, Alphington

16 July 2020
Rev. D

GLENVILL

ELENBERG FRASER

ASPECT Studios™

Date	Document Name	Created By	Approved By	Revision
10.09.2019	YarraBend - 60 Chandler Highway, Alphington - Town Planning Report	CS	PP	A
11.11.2019	YarraBend - 60 Chandler Highway, Alphington - Town Planning Report	CS	PP	B
27.11.2019	YarraBend - 60 Chandler Highway, Alphington - Town Planning Report	CS	PP	C
16.07.2020	YarraBend - 60 Chandler Highway, Alphington - Town Planning Report	WS	QL	D

Contents

1. Introduction	04	3. Chandler Highway	26
1.1. Introduction & Site Plan	05	3.1. Chandler Highway - Concept Plan & Key Features	27
1.2. Site Context	06	3.2. Chandler Highway - Sections	28
1.3. Project Context	07	3.3. Chandler Highway - Planting Palette & Schedule	29
1.4. Landscape Narrative	08	4. Health & Wellness Centre	30
1.5. Landscape Inspiration	09	4.1. Health & Wellness Centre - Sectional Elevations	31
2. Paper Trail	10	4.2. Health & Wellness Onsen - Indicative View	32
2.1. Paper Trail - Design Character	11	4.3. Health & Wellness Centre - Key Levels Plan	33
2.2. Paper Trail - Concept Plan & Key Features	12	4.4. Health & Wellness Centre - Materials & Furniture	34
2.3. Paper Trail - Sectional Elevations	14	4.5. Health & Wellness Centre - Planting Palette	35
2.4. Paper Trail - Sectional Elevations	15	4.6. Health & Wellness Centre - Planting Schedule	36
2.5. Paper Trail - Elevation	16	5. Upper Level Balcony Planters	37
2.6. Paper Trail Ramp (Link to Chandler Highway & Health & Wellness Centre - Indicative View)	17	5.1. Upper Level Balcony Planters - Typical Concept Plan & Section	38
2.7. Paper Trail from Outdoor Pool Below (Indicative View)	18	5.2. Upper Level Balcony Planters - Typical Planting Palette & Schedule	39
2.8. Paper Trail - Key Levels Plan	19		
2.9. Paper Trail - Materials & Furniture	21		
2.10. Paper Trail - Planting Palette	22		
2.11. Paper Trail - Planting Plan	23		
2.12. Paper Trail - Planting Schedule	25		

1. Introduction

1.1. Introduction & Site Plan

This document has been prepared on behalf of Glenvill as part of the full Town Planning Application for 'The Paper Trail', 'Health & Wellness Centre' and the 'Outer Circle Precinct'. These projects form part of the wider YarraBend development.

The landscape proposals create a series of external spaces that support the residential and leisure uses of the proposed development while allowing for both pedestrian and cycle movement through the sites. These spaces will compliment the surrounding developments and open spaces within the wider YarraBend development.

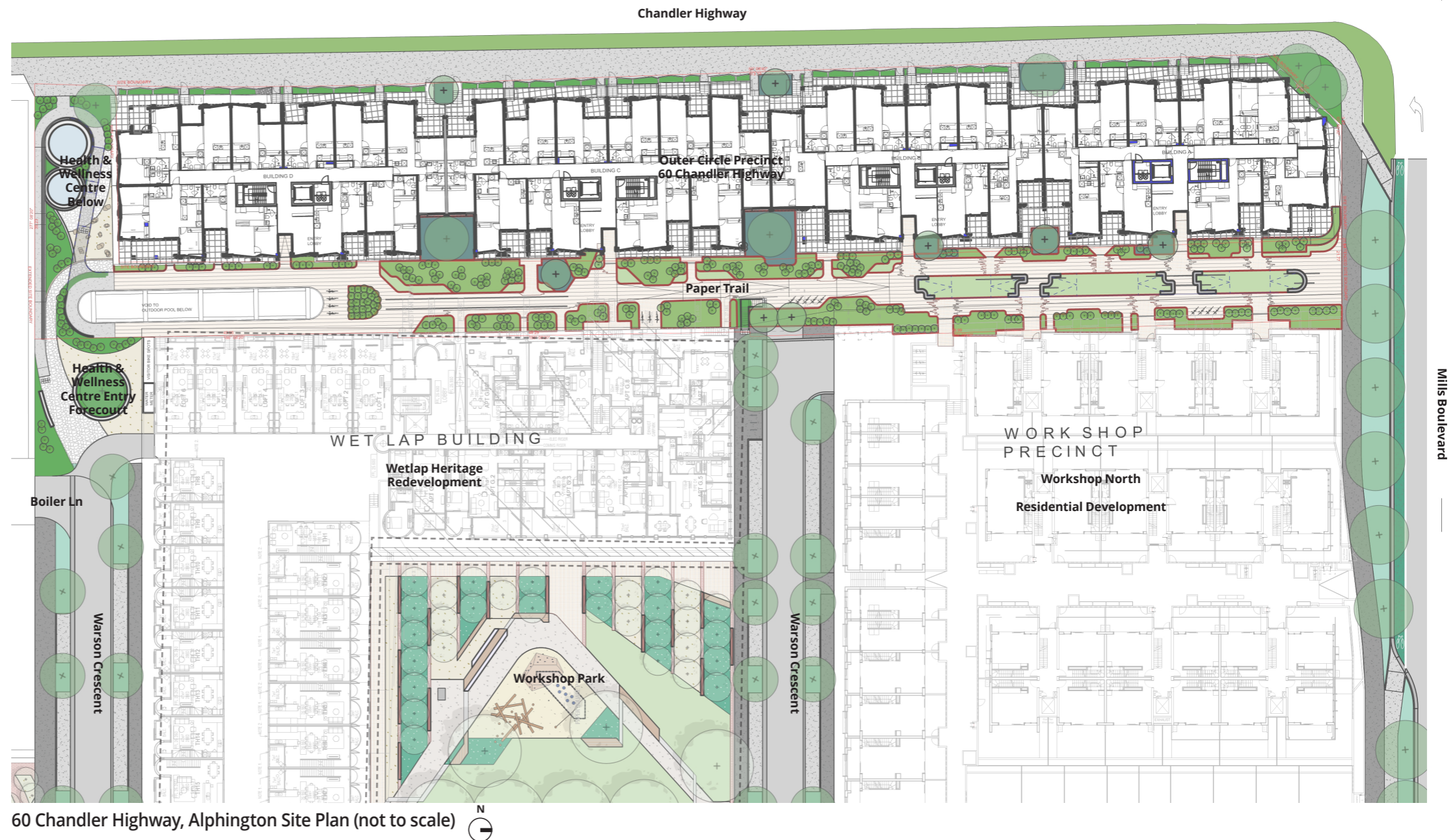
Landscape proposals include:

- Publicly accessible Paper Trail elevated walkway
- Chandler Highway boundary planters
- Health & Wellness Forecourt Entry and Onsen Outdoor Spa Zone
- Level 04 perimeter planters

This document covers the landscape design aspect of the proposed development across all levels. It explains the existing site context and details the Concept Design proposals using plans, sections and diagrams as well as setting out the proposed planting and material palettes for the external landscape spaces.

Key strategic and design documents have been referenced through the design process, including;

- Alphington paper Mill Development Plan (2016)
 - 01 - The Plan
 - 02 - Planning Report
 - 03 - Site Master Plan
 - 04 - Landscape Concept Plan
 - 05 - Design Guidelines
- Appendix A - Heritage Citations
- Conservation Management Plan, Former Amcor

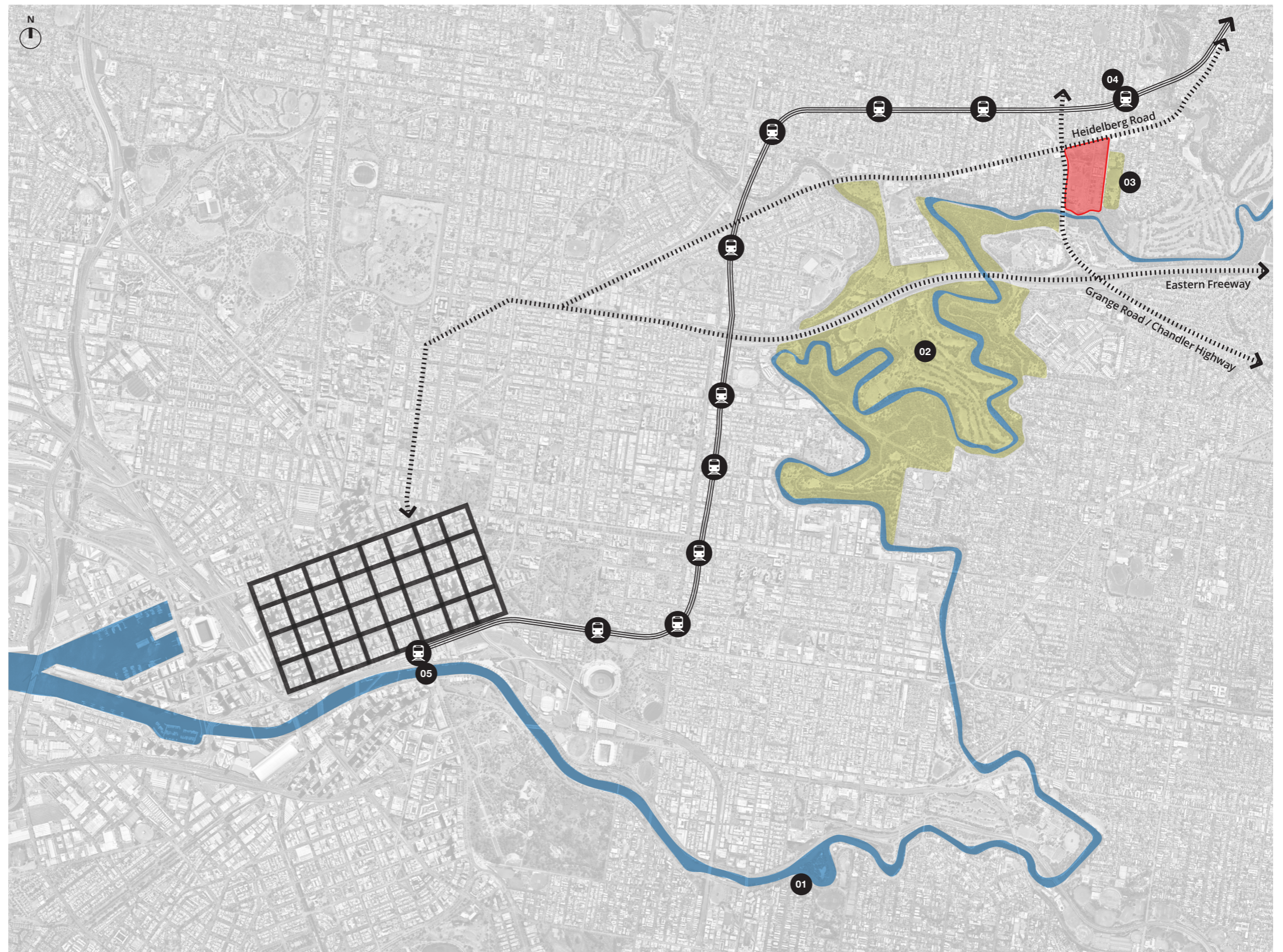


1.2. Site Context

The overall YarraBend project site is located in the suburb of Alphington in the City of Yarra approximately 6.5km north-east of Melbourne's Central Business District.

The site is immediately north of the Yarra River, which provides good pedestrian and cycle access to the Yarra trail and Yarra Bend Park. Alphington Park is to the east of the project site, which includes large open recreation space and sport facilities.

The project site has good transport links with Heidelberg Road running east-west to the north, Chandler Highway / Grange Road running north-south to the west and is within close proximity to the Eastern Freeway. Alphington Railway Station is a short walk and less than 500m from the project site allowing direct rail access to Flinders Street Station



Site Context Diagram (not to scale)

- LEGEND**
- YarraBend Project Site
 - Rail connection
 - Main road connections
 - Park facilities
 - 🚂 Train Station
 - 01 Yarra River
 - 02 Yarra Bend Park
 - 03 Alphington Park
 - 04 Alphington Railway Station
 - 05 Flinders Street Railway Station

1.3. Project Context

The overall YarraBend development consists of multiple residential and mixed-use plots throughout the site. The landscape proposals within this report relate to the following development sites only;

- The Paper Trail 09
- Health & Wellness Centre 10
- Outer Circle Precinct 08

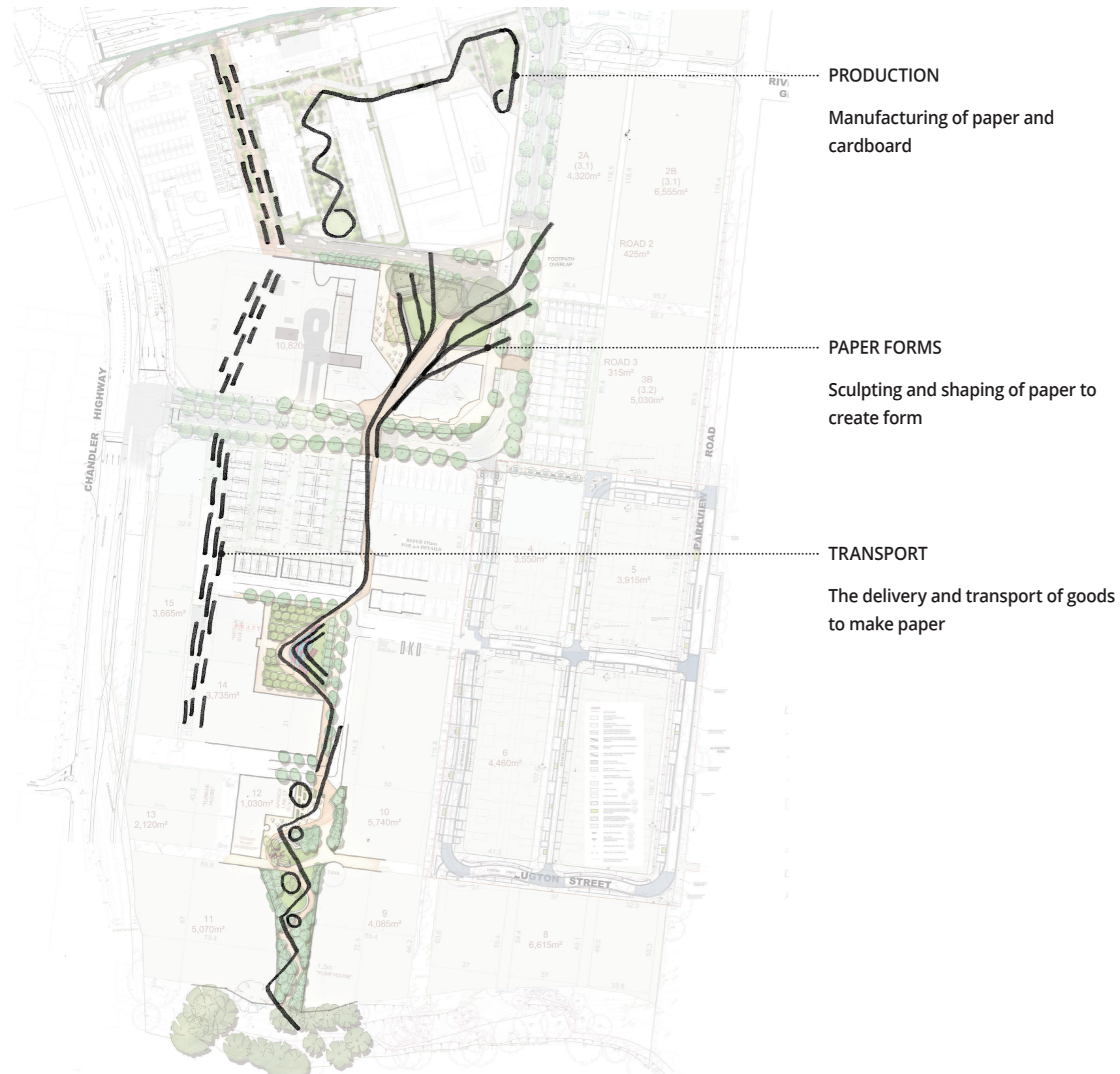
These projects are located to the west of the development site adjacent to Chandler Highway and consist of both private and publicly accessible open space.

- LEGEND**
- YarraBend Project Site
 - Development Plot
 - Development Plot (By Others)
 - Public Open Space
 - Public Accessible Private Space
- OPEN SPACES**
- 01 Alphington Square (By Others)
 - 02 Artisan Park (By Glenvill)
 - 03 Workshop Park (By Glenvill)
 - 04 Turbine Heritage Park (By Glenvill)
 - 05 River Park
- DEVELOPMENT BY GLENVILL**
- 06 Artisan East Mixed-use Development
 - 07 Artisan West Development
 - 08 Outer Circle Precinct Residential Development
 - 09 The Paper Trail
 - 10 Health & Wellness Centre
 - 11 Workshop North Residential Development
 - 12 Wetlap Residential Development
 - 13 Workshop South Residential Development
 - 14 Boiler House (1950s) Residential Development
 - 15 Boiler House (1920s) Residential Development
 - 16 Riverfront West Residential Development
 - 17 Riverfront East Residential Development
 - 18 Residential House & Land Developments
 - 19 Gateway
 - 20 Parkview Townhouses
- DEVELOPMENT BY OTHERS**
- 21 Alphington Village (By Others)
 - 22 Outer Circle Mews (By Others)
 - 23 Home (By Caydon)
 - 24 Retirement Village (By Others)
 - 25 Townhouses (By Others)



YarraBend Development Plan - Streets & Public Open Space

1.4. Landscape Narrative



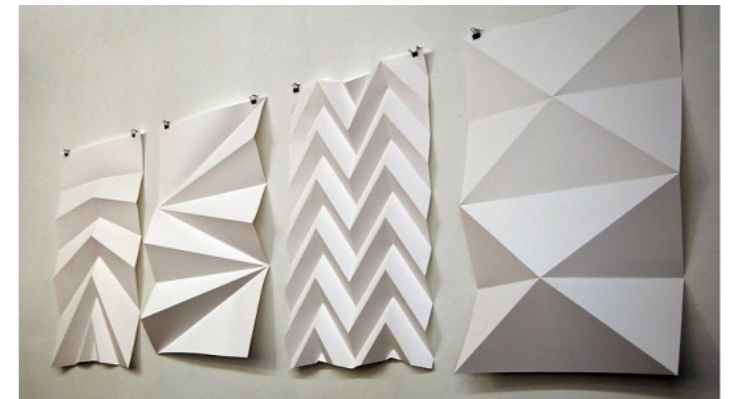
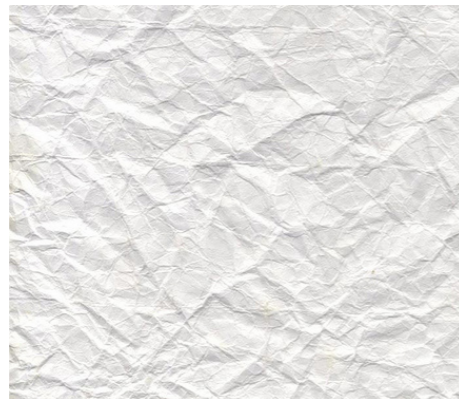
Landscape Narrative Diagram (not to scale)

1.5. Landscape Inspiration

Manufacture / Process



Product / Paper



Design Process / Form



2. Paper Trail

2.1. Paper Trail - Design Character

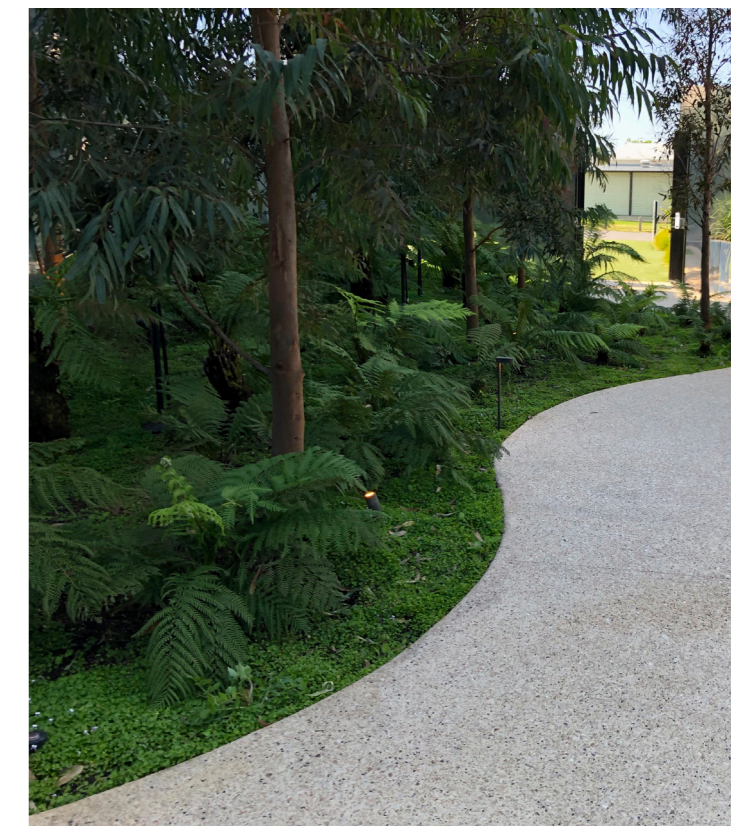
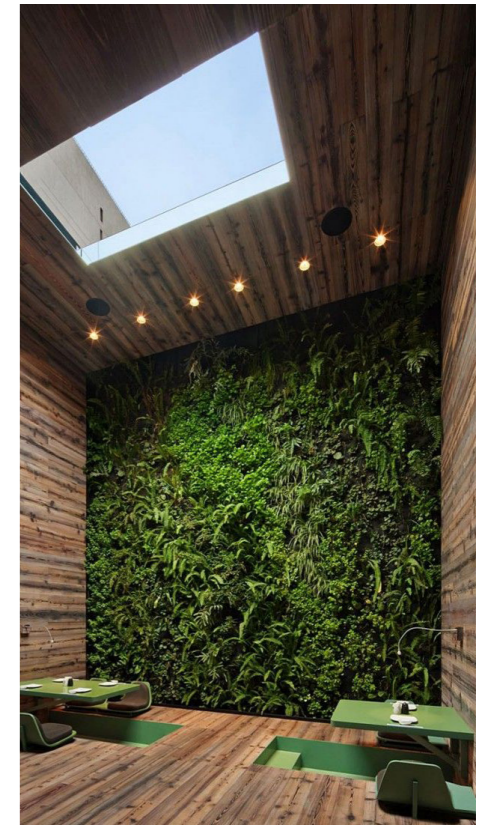
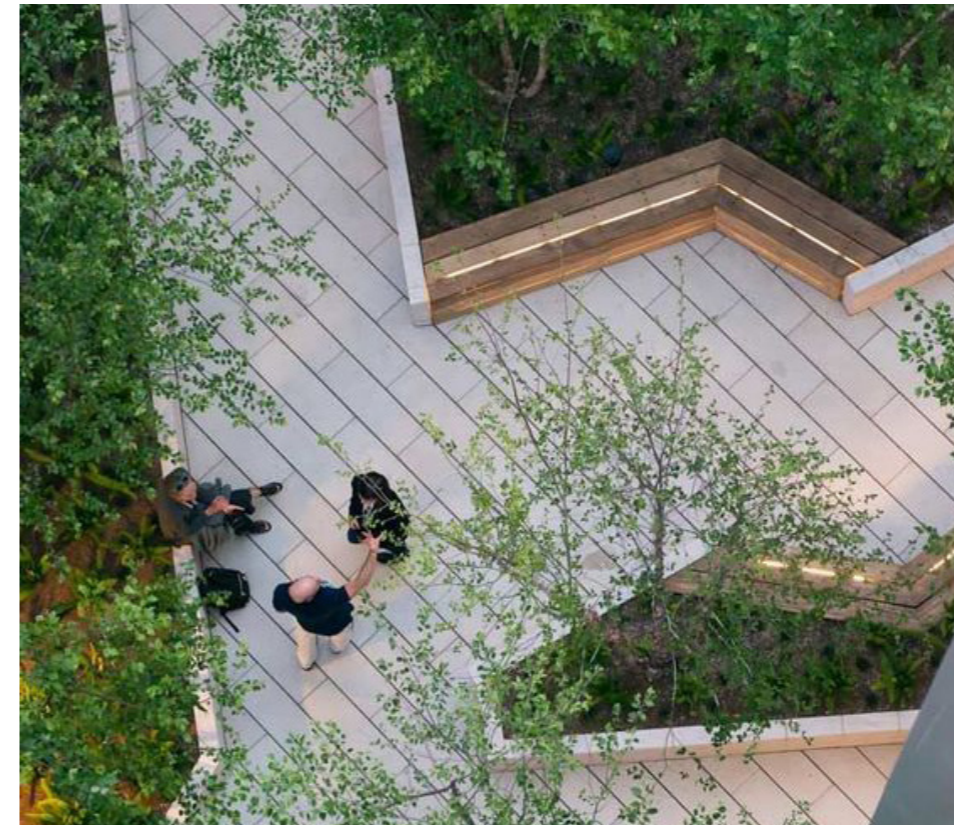
The landscape proposal for the Paper Trail provides an elevated pedestrian walkway to the Outer Circle Precinct Apartments. While the site is to be privately owned and maintained, it will remain publicly accessible at all times. The walkway provides a direct link from the precinct to the Chandler Highway shared use path to the north of the development.

The Paper Trail interfaces with Outer Circle precinct apartments to the West, and The Mills and Wetlap to the East. Lobby entrances to the building are provided along the Paper Trail. The inclusion of multiple private entrances from the Paper Trail allows for passive surveillance of the site.

A 2.5m wide pedestrian walkway references the sites former railway sidings, serving as a predominantly linear path broken up by path movements and round corten planters to lobby entrances. Paper making and production is referenced throughout the design through the use of circular geometries. Key sightlines along the path are maintained to ensure a clear line of sight for pedestrians, with a staircase entry/exit point located halfway along the walkway.

The use of heritage themed materials along the walkway, such as feature brick inlays along the pedestrian path, and corten steel planters is offset by high quality stone paving to residential entrances. This differentiation of materials provides some distinction between the private buildings and publicly accessible walkway. Seating opportunities are provided along the length of the walkway, and 12 bicycle hoops provide visitors with ample opportunity for bicycle parking.

Raised corten steel planters of varying heights allow for dense screening bamboo planting in clusters to provide privacy for residences, with lush, green understorey planting to give the space an inviting and green backdrop to residences. Small feature trees to round corten feature planters at lobby entries provides shade and colour, while larger species are accommodated in the breaks between buildings.

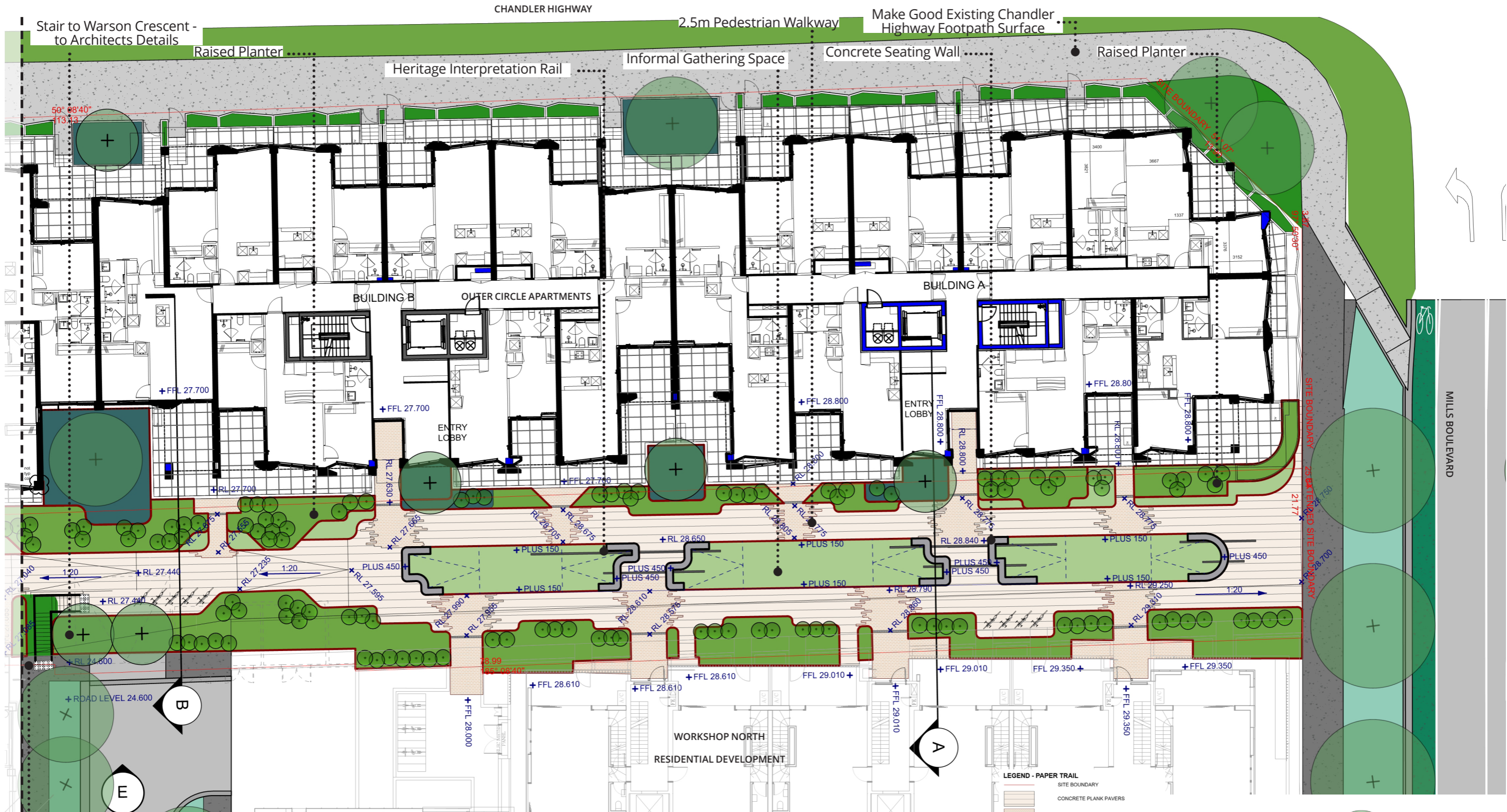


2.2. Paper Trail - Concept Plan & Key Features



Paper Trail Concept Plan - Part A (Scale 1:250 @A3)

For Continuation See Page 17



Stair to Warson Crescent - to Architects Details

CHANDLER HIGHWAY

2.5m Pedestrian Walkway

Make Good Existing Chandler Highway Footpath Surface

Raised Planter

Heritage Interpretation Rail

Informal Gathering Space

Concrete Seating Wall

Raised Planter

BUILDING B

OUTER CIRCLE APARTMENTS

BUILDING A

ENTRY LOBBY

ENTRY LOBBY

WORKSHOP NORTH
RESIDENTIAL DEVELOPMENT

MILLS BOULEVARD

..... Vertical Greening

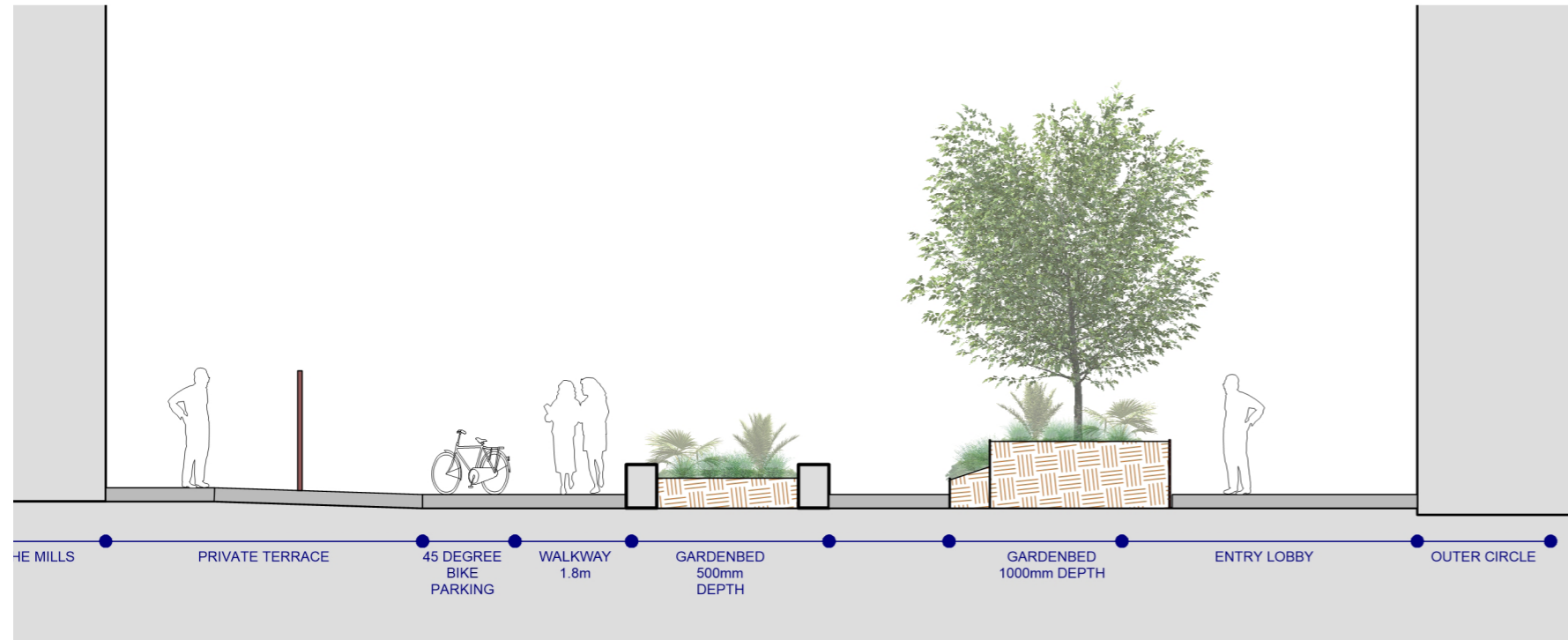
LEGEND - PAPER TRAIL

- SITE BOUNDARY
- CONCRETE PLANK PAVERS
- BRICK PAVERS
- INSITU CONCRETE PAVING PORTLAND GREY WITH BROOM FINISH
- EXPOSED AGGREGATE CONCRETE PAVING TO COUNCIL STANDARDS
- IRRIGATED GARDENBED 1200mm DEPTH
- IRRIGATED GARDENBED 1000mm DEPTH
- IRRIGATED GARDENBED 500mm DEPTH
- IRRIGATED GARDENBED WITH ENGINEERED PLANTING MEDIA (EXTENSIVE GREEN ROOF) 250mm DEPTH
- CONCRETE SEAT WALL
- CORTEN STEEL PLANTER WALL
- BIKE HOOP
- TACTILE GROUND SURFACE INDICATORS
- GRATED STRIP DRAIN
- HERITAGE INTERPRETATION RAIL
- SEMI ADVANCED TREE LARGE SPECIES 9-20m HIGH
- SEMI ADVANCED TREE SMALL - MEDIUM SPECIES 4-9m HIGH
- BAMBOO

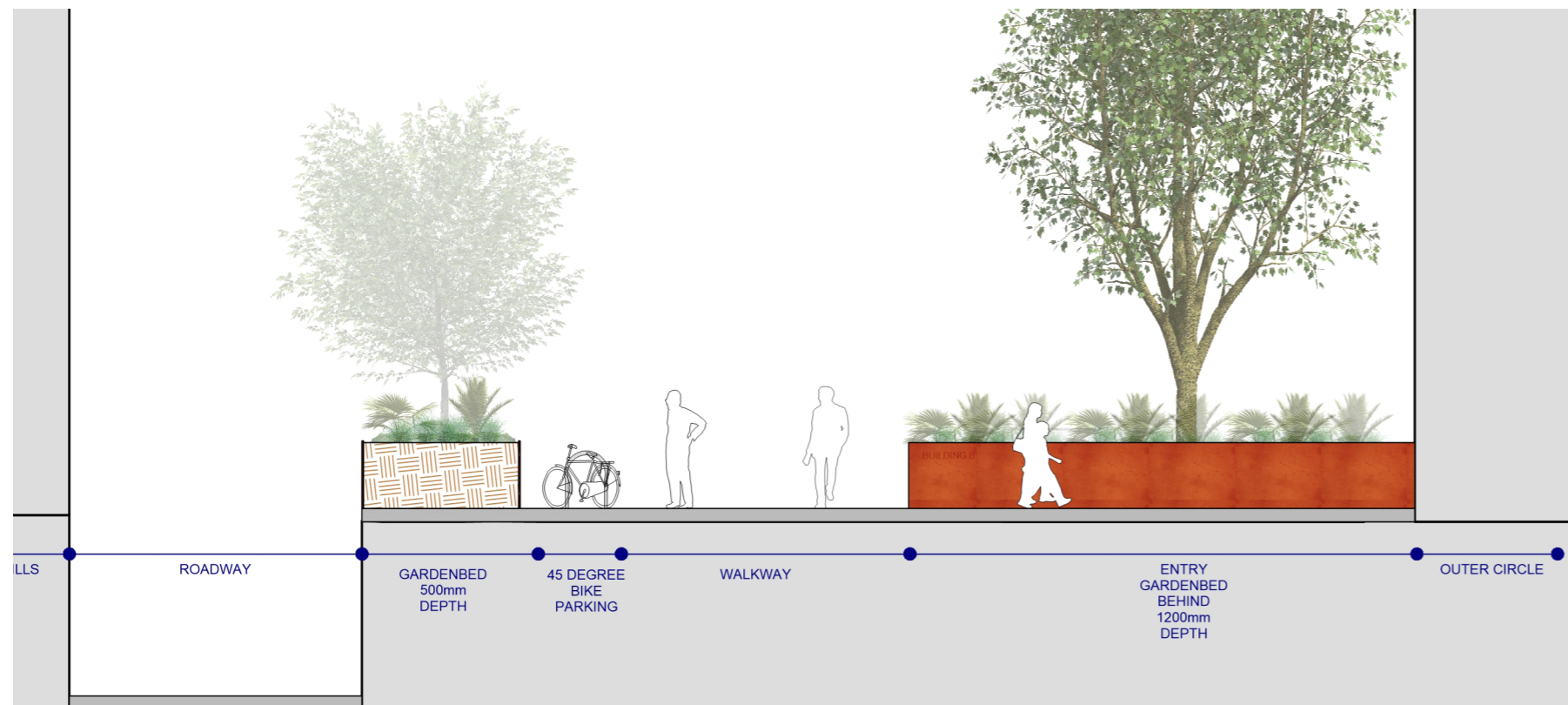
Paper Trail Concept Plan - Part B (Scale 1:250 @A3)



2.3. Paper Trail - Sectional Elevations

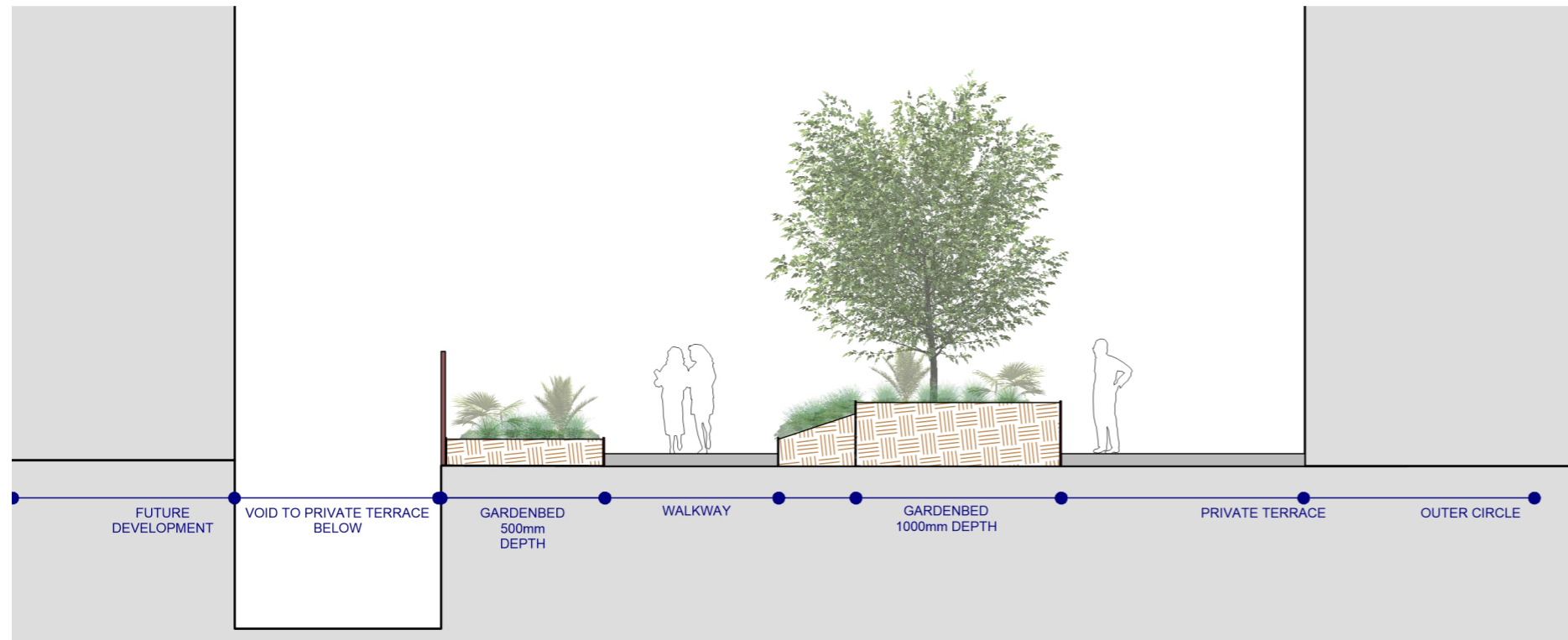


Sectional Elevation A - Paper Trail Typical Walkway (Scale 1:100 @A3)

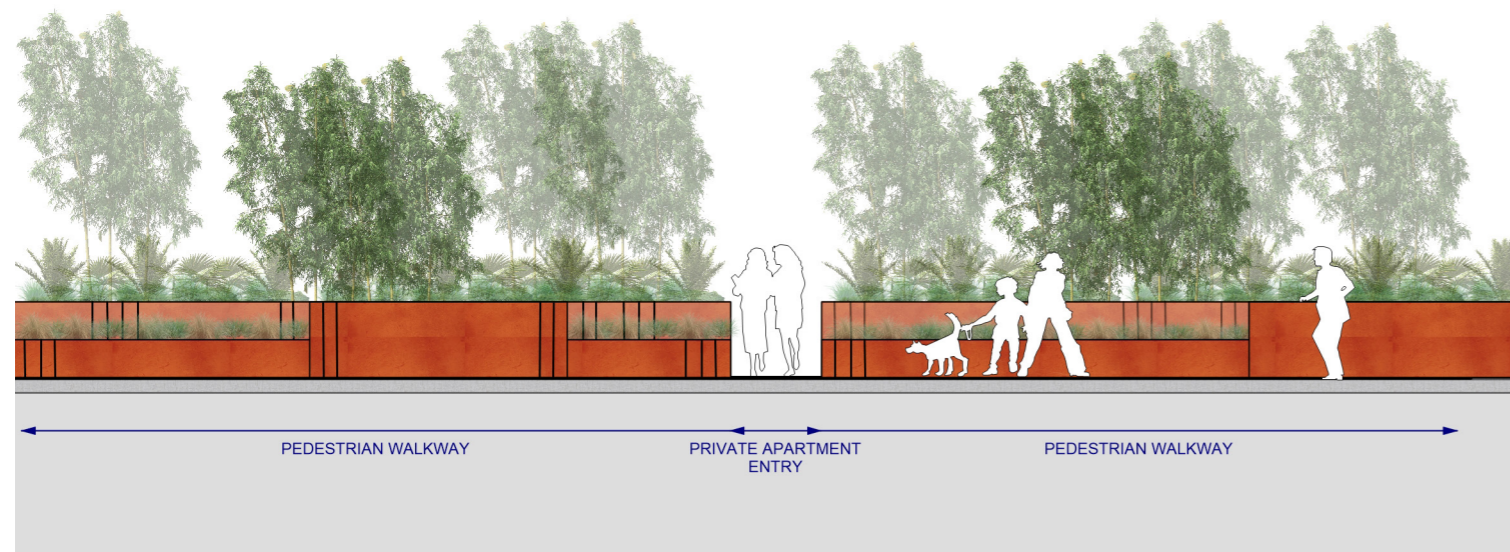


Sectional Elevation B - Paper Trail Typical Walkway (Scale 1:100 @A3)

2.4. Paper Trail - Sectional Elevations



Sectional Elevation C - Paper Trail Typical Walkway (Scale 1:100 @A3)

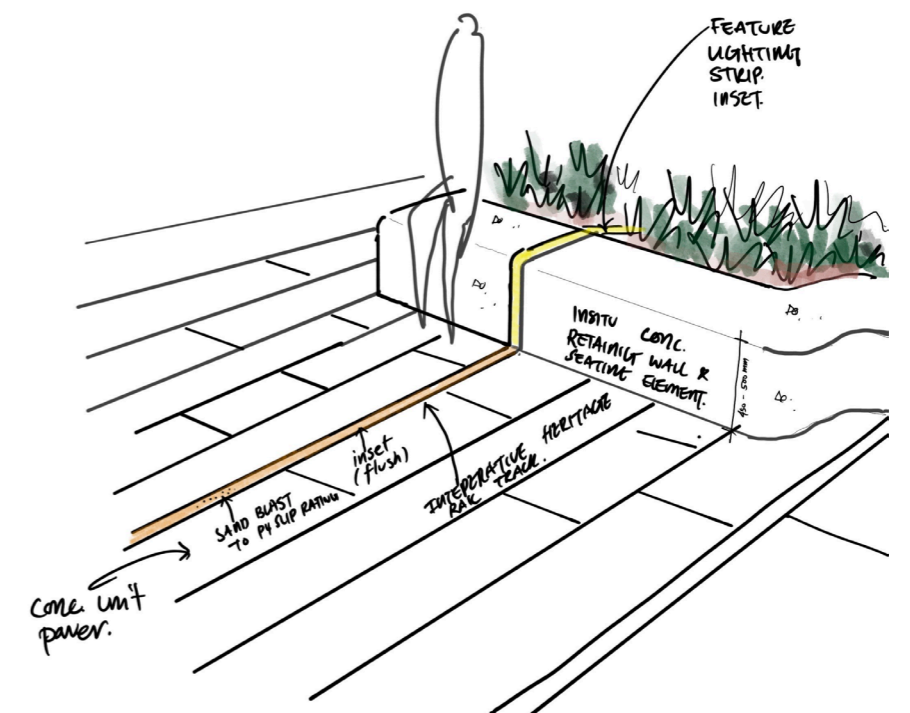
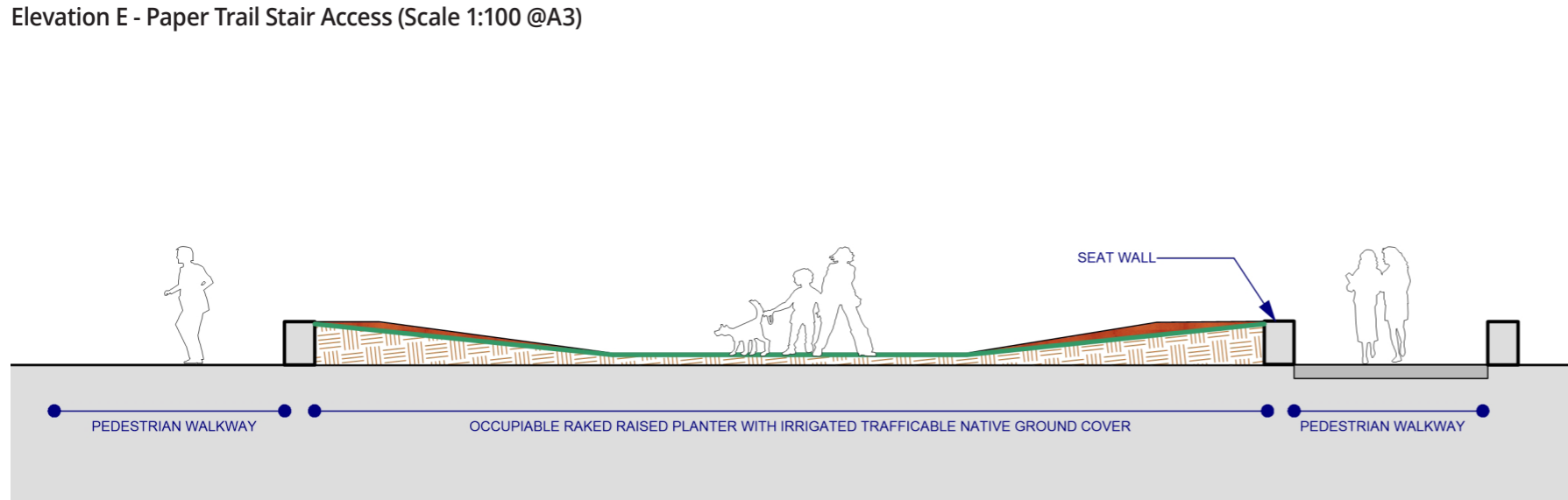


Elevation D - Paper Trail Private Entrance (Scale 1:100 @A3)

2.5. Paper Trail - Elevation



Elevation E - Paper Trail Stair Access (Scale 1:100 @A3)



Detail Sketch - Informal Gathering Space - Heritage Rail Interpretation

2.6. Paper Trail Ramp (Link to Chandler Highway & Health & Wellness Centre - Indicative View)



Indicative Render (By Others)

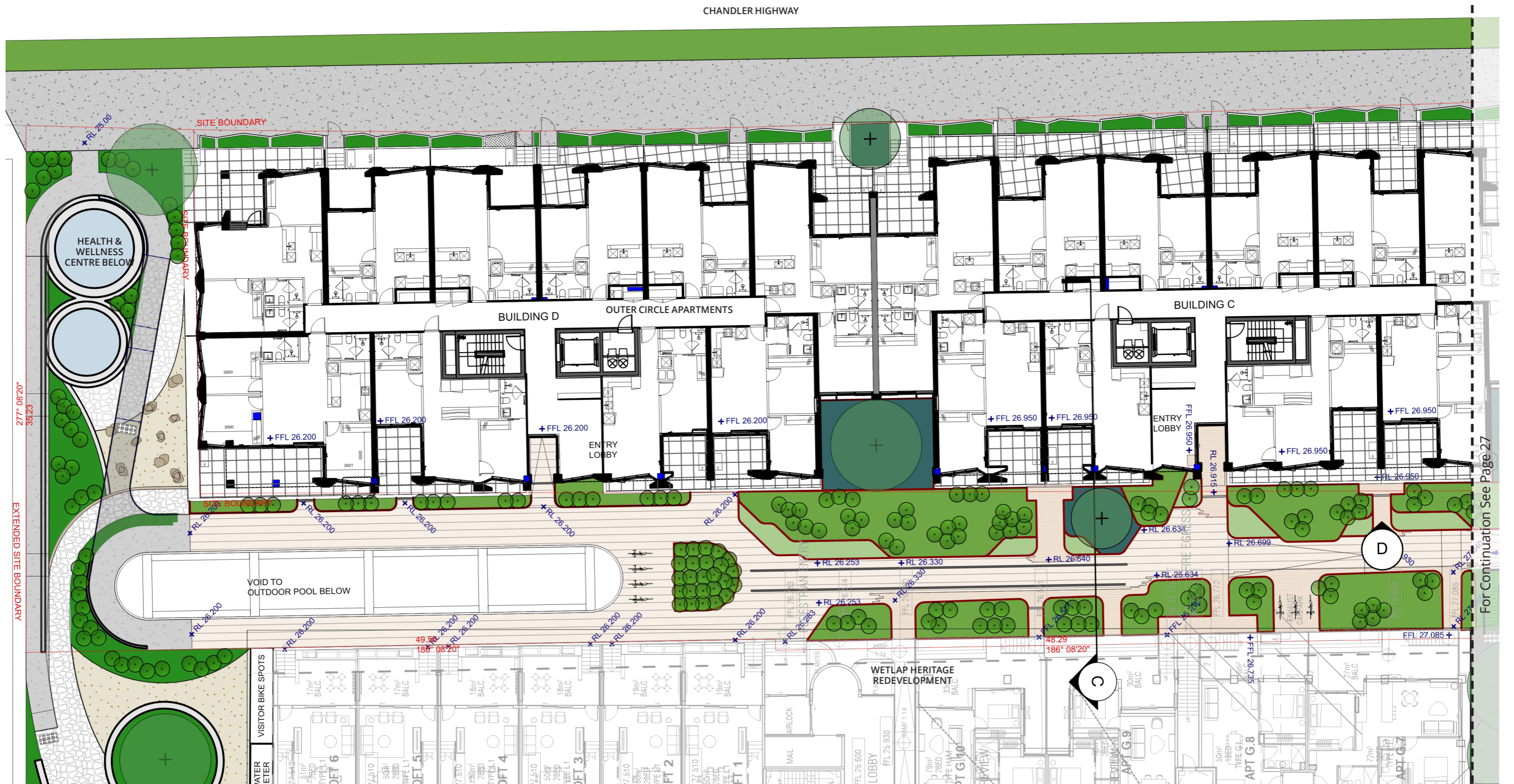
2.7. Paper Trail from Outdoor Pool Below (Indicative View)



Indicative Render (By Others)

YarraBend - 60 Chandler Highway, Alphington - Town Planning Report

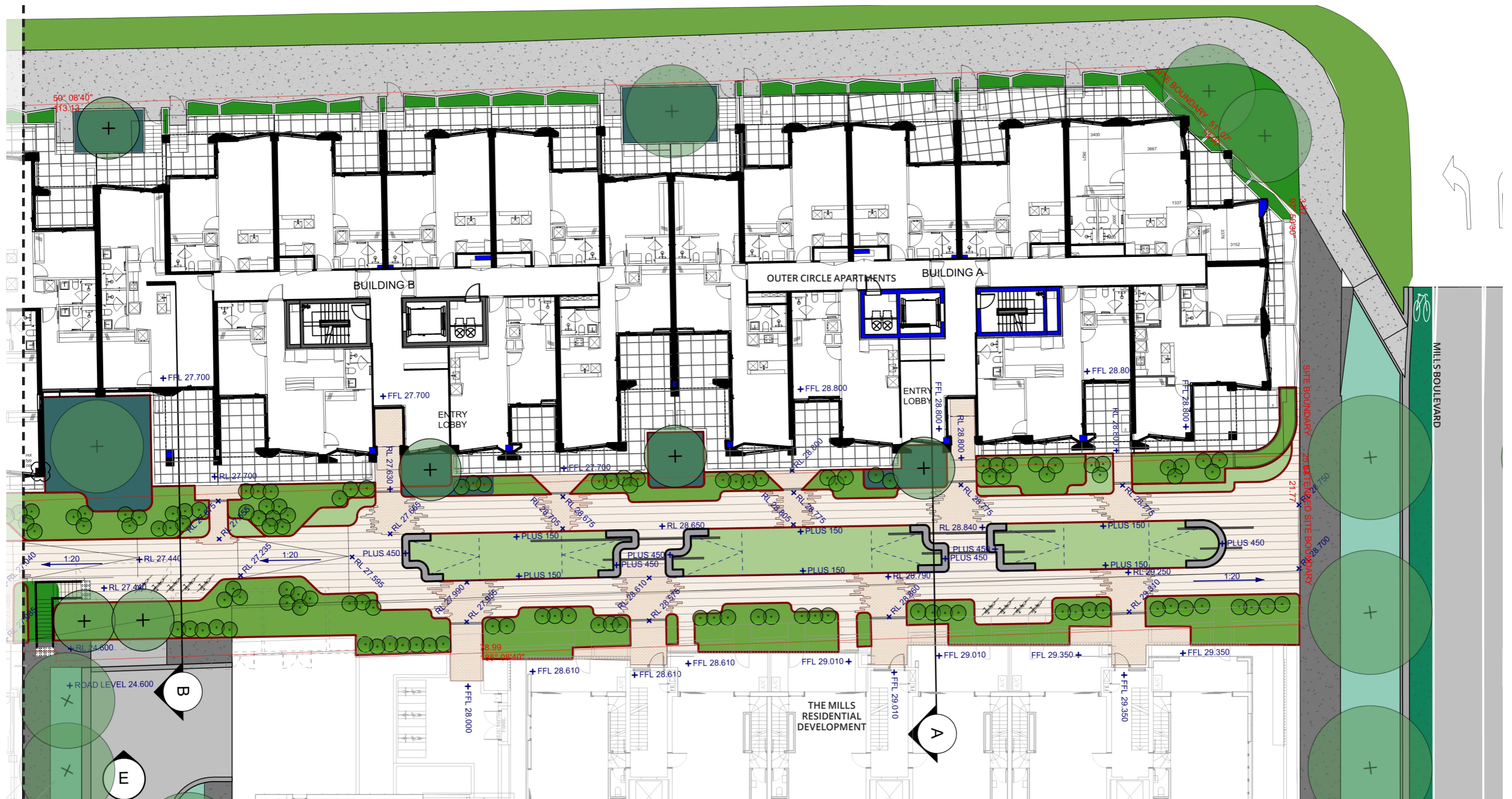
2.8. Paper Trail - Key Levels Plan



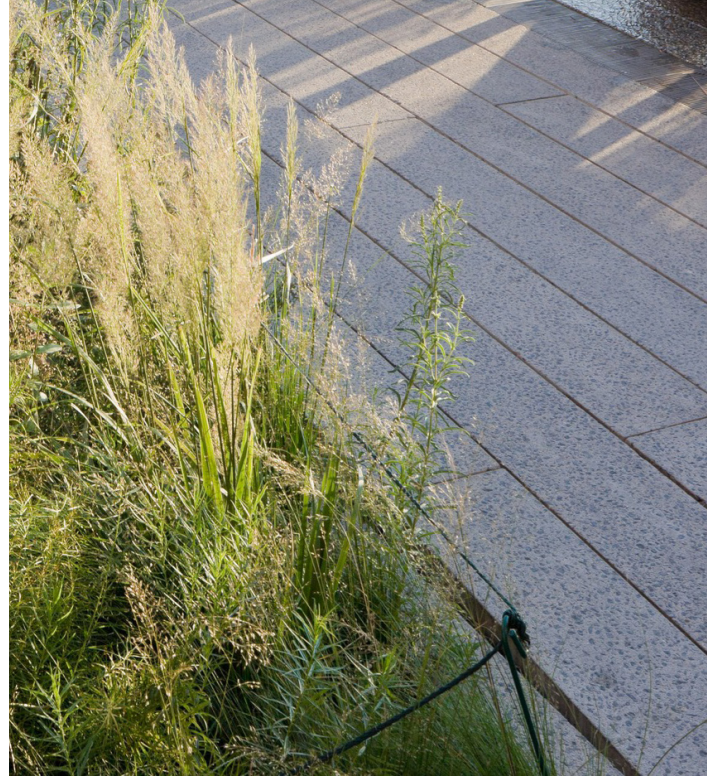
Paper Trail Key Levels Plan (Scale 1:250 @A3)

NOTE: All public realm treatment outside the project site for illustrative purposes only.

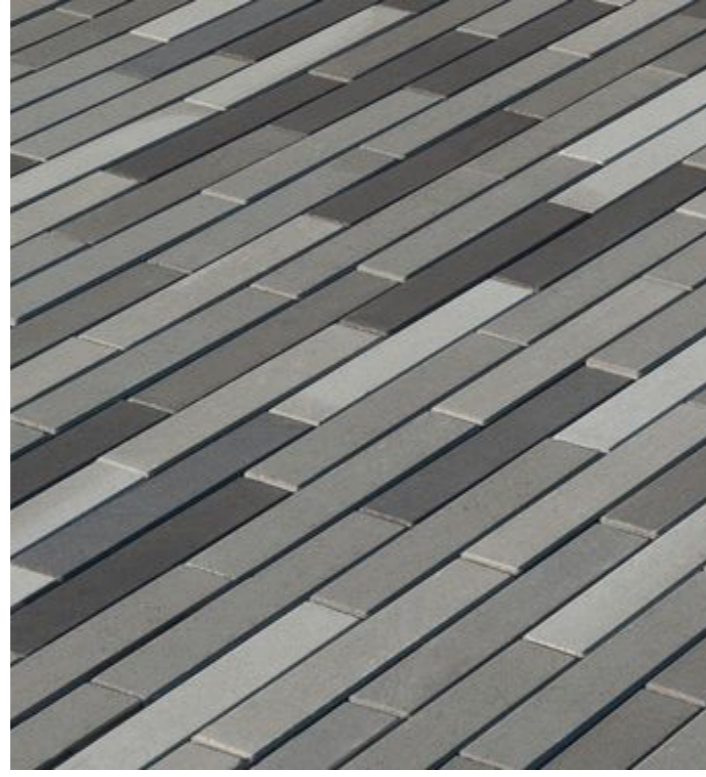
CHANDLER HIGHWAY



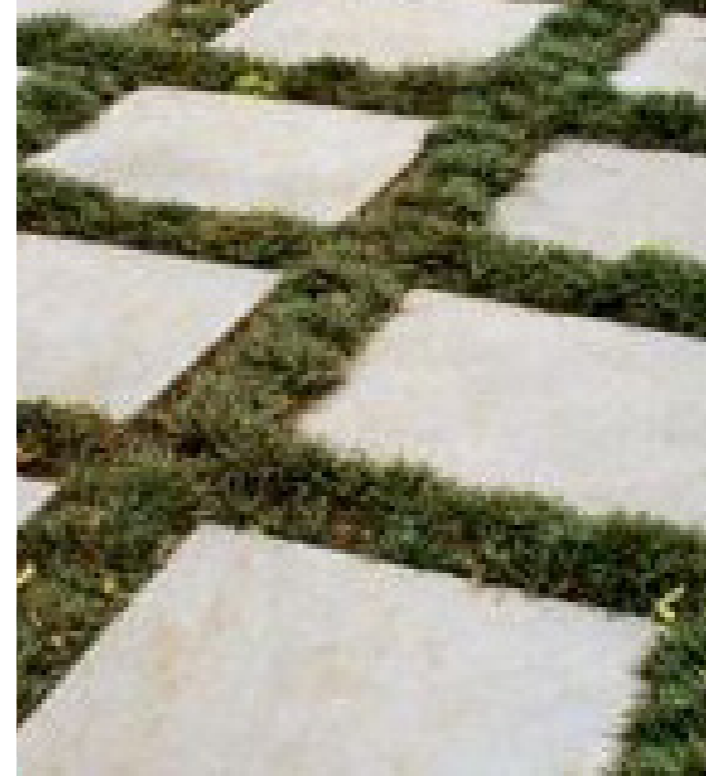
2.9. Paper Trail - Materials & Furniture



Linear concrete paving to pedestrian walkway



Stone pavers to residential lobby entrances



Large format stone pavers to private residential entrances



Corten gardenbed walls



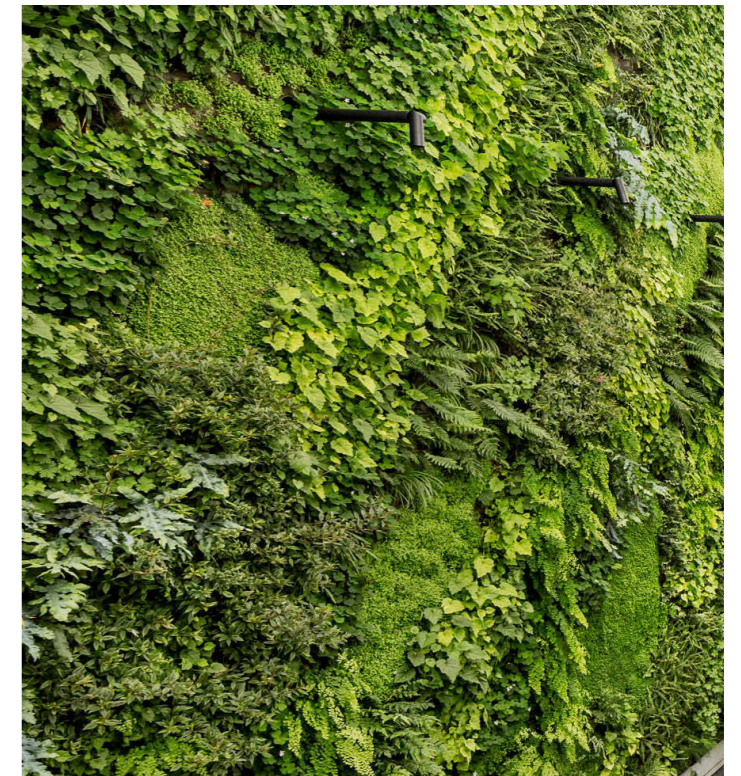
Feature heritage interpretation brick inlay



Integrated timber seating



Entry feature & wayfinding



Green wall to Health & Wellness Centre void above pool

2.10. Paper Trail - Planting Palette



Ulmas Pavifolia
Chinese Elm



Waterhousea floribunda
Lilly Pilly



Bambusa lako
Timor Black Bamboo



Himalayacalamus porcatus
Nepalese Blue Bamboo



Acacia cognata 'Green Mist'
River Wattle



Centaurea cinarea
Dusty Miller



Dianella cerulea
Dianella



Dichondra argentea
Silver Falls



Dicksonia antarctica
Soft Tree Fern



Doodia aspera
Prickly Rasp Fern



Doryanthes palmeri
Giant Spear Lily



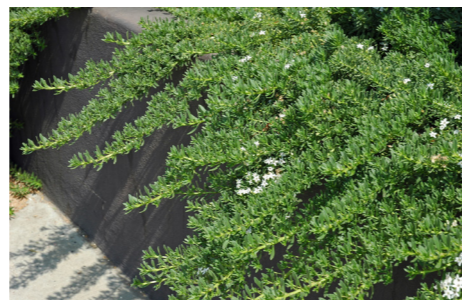
Fatsia japonica
Glossy-leaf Paper Plant



Helichrysum italicum
Curry Plant



Lomandra hystrix
Green-Mat Rush



Myoporum parvifolium
Creeping Boobialla



Pennisetum alopecuroides
Pennstripe

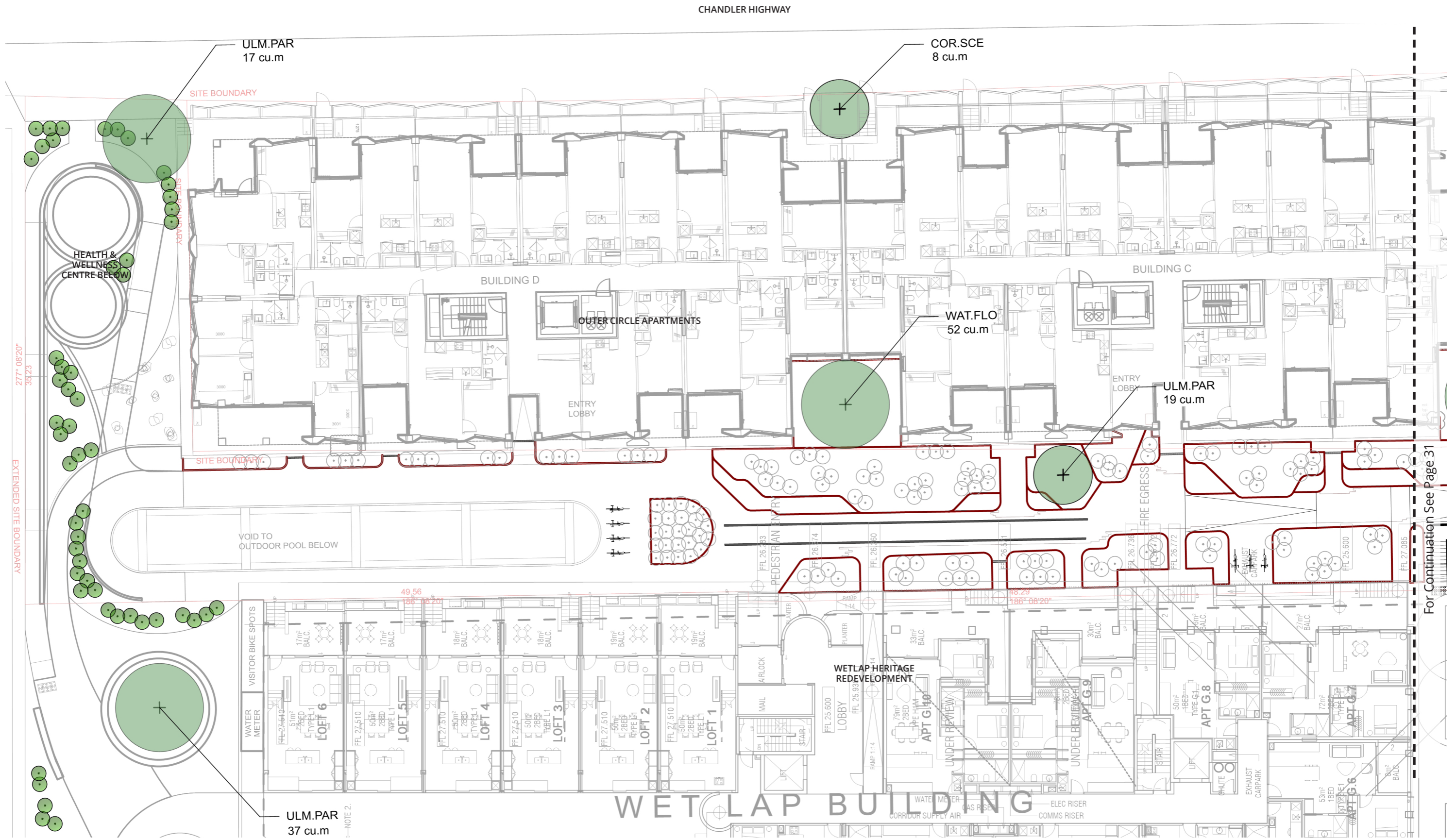


Plectranthus argentatus
Silver Plectranthus



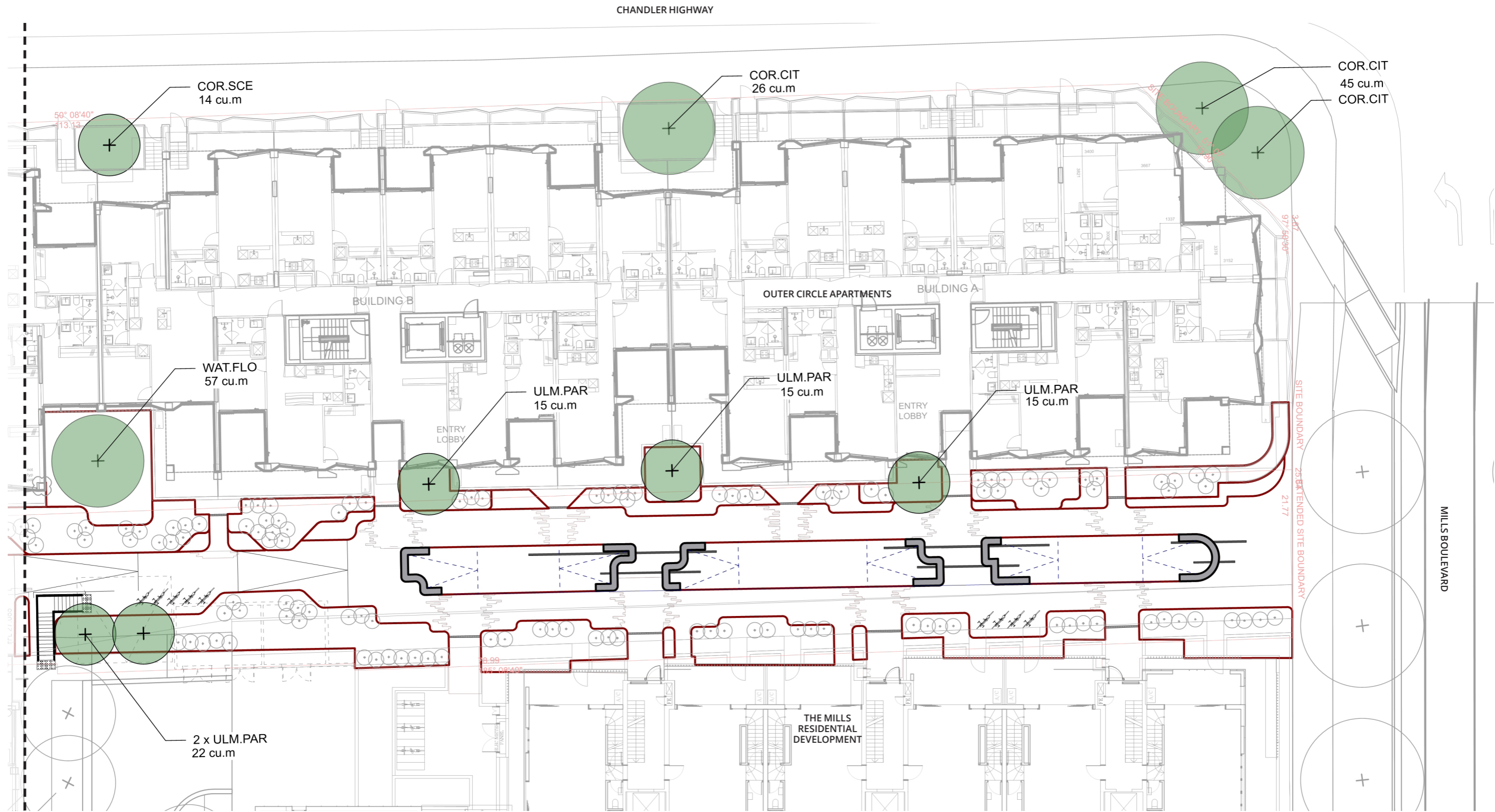
Strelitzia reginae
Bird of Paradise

2.11. Paper Trail - Planting Plan



Paper Trail Planting Plan (Scale 1:250 @A3)

For Continuation See Page 31



2.12. Paper Trail - Planting Schedule

PLANTING SCHEDULE - PAPER TRAIL							
Life Form / Code	Botanical Name	Common Name	Mature Size (H x W) m	Install Size	Volume (Trees)	Spacing (m)	Density (per m2)
TREES							
ULM.PAR	Ulmus parvifolia	Chinese Elm	10 x 8	100L 2.5m ht. 40mm Caliper	14.9 cu.m	as shown	N/A
WAT.FLO	Waterhousea floribunda	Lilly Pilly	12 x 10	100L 2.5m ht. 40mm Caliper	14.9 cu.m	as shown	N/A
BAMBOO							
	Bambusa lako	Timor Black Bamboo	12 x 1	50L		as shown	N/A
	Himalayacalamus porcatus	Nepalese Blue Bamboo	5 x 3	50L		as shown	N/A
SHRUBS, GRASSES & GROUNDCOVERS MIX							
	Acacia cognata 'Green Mist'	River Wattle	1 x 1	200mm pot	-	0.75	1.8
	Centaurea cinerea	Dusty Miller	0.3 x 0.2	140mm pot	-	0.4	6.25
	Dianella cerulea	Dianella	0.5 x 0.4	140mm pot	-	0.5	4
	Dichondra argentea	Silver Falls	0.3 x 0.1	140mm pot	-	0.4	6.25
	Dicksonia antarctica	Soft Tree Fern	2-4 x 2-4	200mm pot	-	1.5	0.44
	Doodia Aspera	Prickly Rasp Fern	0.4 x 0.6	140mm pot	-	0.75	1.8
	Doryanthes palmeri	Giant Spear Lily	3 x 3	200mm pot	-	1.5	0.44
	Fatsia japonica	Glossy-leaf Paper Plant	1.5 x 1.5	200mm pot	-	1	1
	Helichrysum italicum	Curry Plant	0.4 x 0.4	140mm pot	-	0.6	2.8
	Lomandra hystrix	Green Mat-rush	1 x 1	200mm pot	-	0.75	1.8
	Myoporum parvifolium	Creeping Boobialla	0.4 x 0.1	140mm pot	-	1	1
	Plectranthus argentatus	Silver Plectranthus	1 x 1	200mm pot	-	0.5	4
	Strelitzia reginae	Bird of Paradise	1.2 x 1.2	200mm pot	-	1	1

NOTE: Soil target volumes based on Soil Volume Simulator by Simon Leake and Elke Haege <https://www.elkeh.com.au/soils-no-text/>

SOIL VOLUME SIMULATOR

Key Factors influencing suitable minimum soil rooting volumes for New Trees in Limited Spaces.
* Required

MINIMUM SOIL VOLUME

Select from the dropdown lists below to work out the suitable simulated recommended minimum soil volume for your project.

Tree Design Size and Height *
small/medium 4-9m high (at 15-20 years) ▼

Climatic growing conditions (particularly rainfall) *
is generally suited to the tree species selected. ▼

Soil suitability within Tree Pit *
The proposed soil type is optimal for tree species selected. E.g.) Specificatio ▼

Maintenance *
Periodically for the first 5+ years, there will be: suitable type and applications ▼

Lifespan/Planting replacement time *
A full size mature tree is expected with a long design life of 100+ years. ▼

Total Recommended Minimum Soil Volume:
6.15 m3

Small Tree (4-9m high)

SOIL VOLUME SIMULATOR

Key Factors influencing suitable minimum soil rooting volumes for New Trees in Limited Spaces.
* Required

MINIMUM SOIL VOLUME

Select from the dropdown lists below to work out the suitable simulated recommended minimum soil volume for your project.

Tree Design Size and Height *
tall tree 9-20m high (at 15-20 years) ▼

Climatic growing conditions (particularly rainfall) *
is generally suited to the tree species selected. ▼

Soil suitability within Tree Pit *
The proposed soil type is optimal for tree species selected. E.g.) Specificatio ▼

Maintenance *
Periodically for the first 5+ years, there will be: suitable type and applications ▼

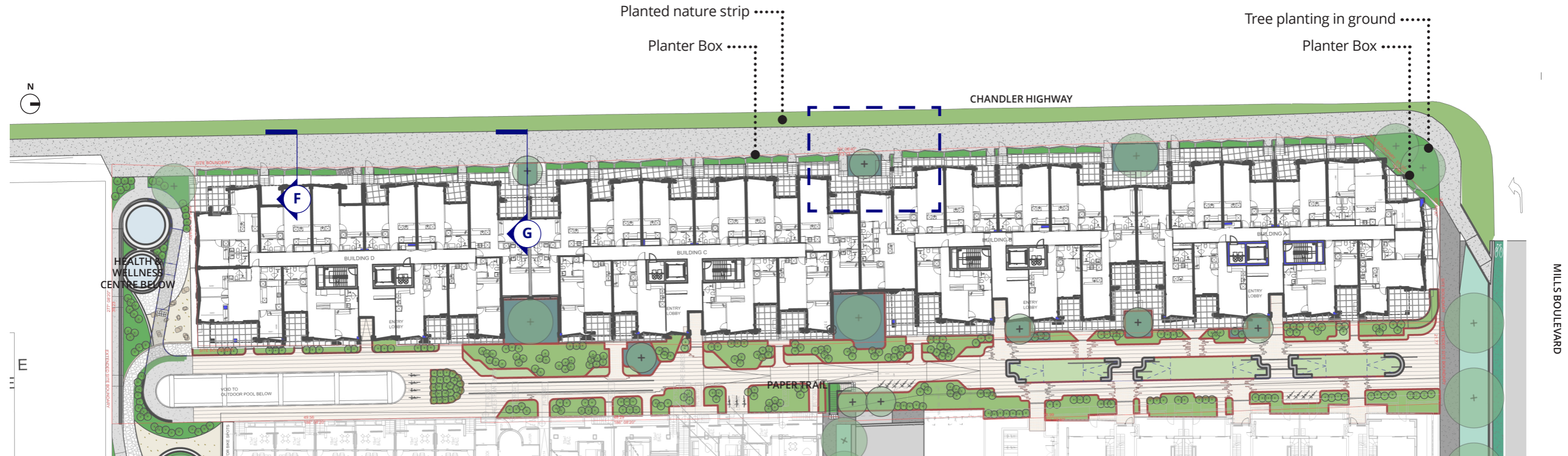
Lifespan/Planting replacement time *
Minimal stunting of tree is acceptable and/or the design life of the tree is to b ▼

Total Recommended Minimum Soil Volume:
14.90 m3

Large Tree (9-20m high)

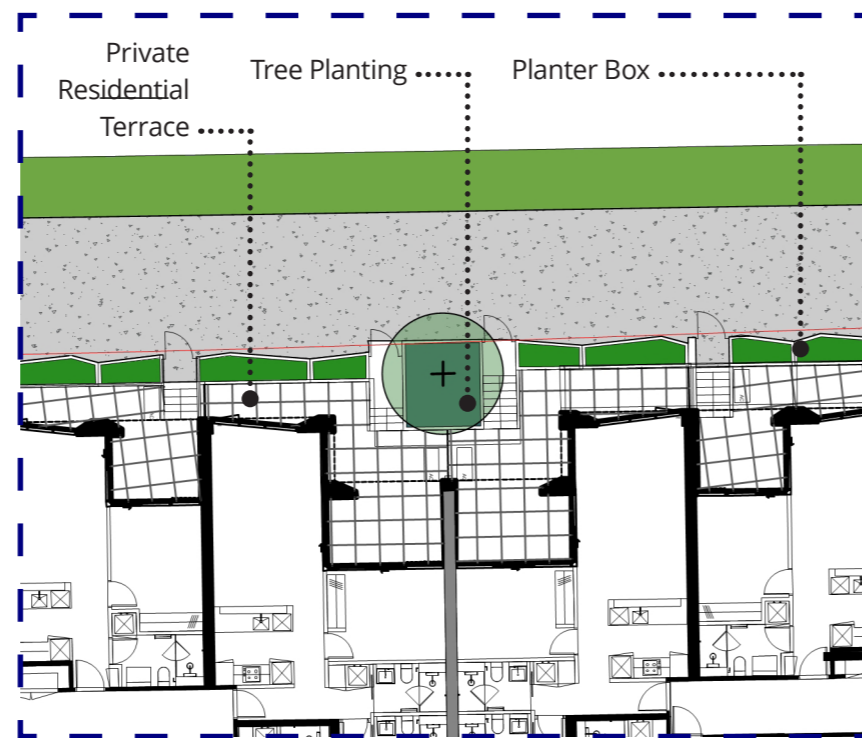
3. Chandler Highway

3.1. Chandler Highway - Concept Plan & Key Features



Chandler Highway Concept Plan (Scale 1:500 @A3)

A series of planters along the Western edge of the development provides a green interface between Chandler Highway and private residential terraces. Planters are stepped with the building to maintain a human scale edge, while also allowing for enough soil depth to ensure successful planting outcomes. Setbacks to building facades provides opportunity for larger tree species to be planted. The planting palette utilises hardy, drought-tolerant plant species to ensure a robust green edge to Chandler Highway.



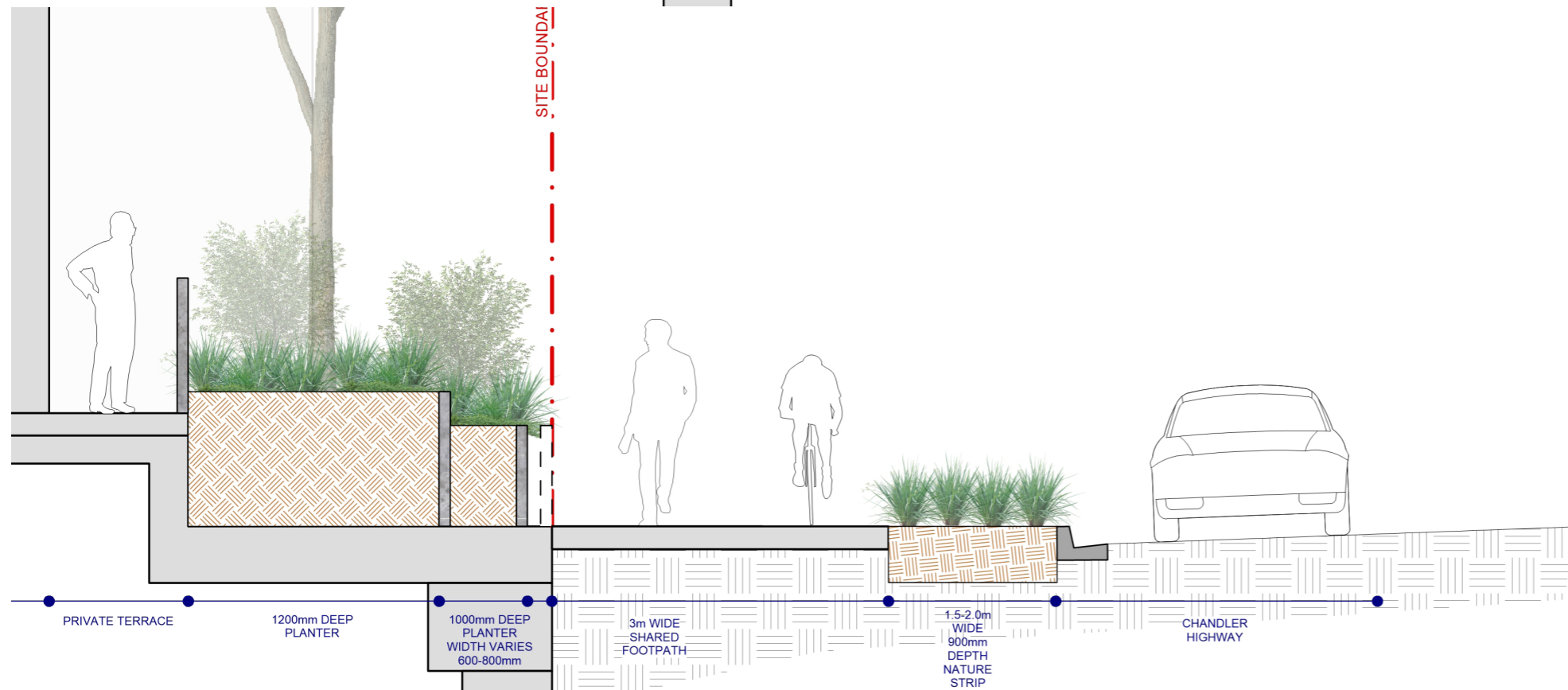
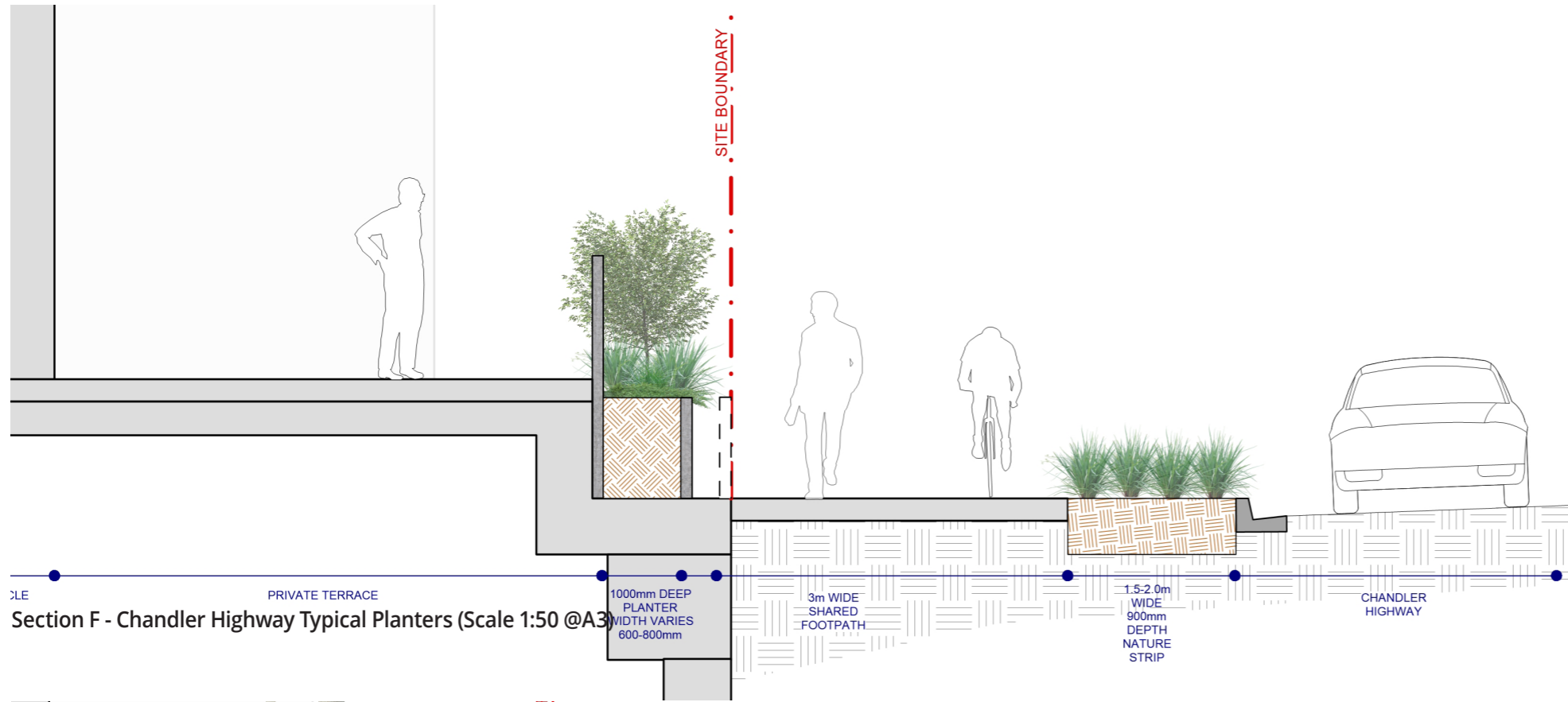
Chandler Highway Typical Planter Plan Zoom (Scale 1:250 @A3)

LEGEND

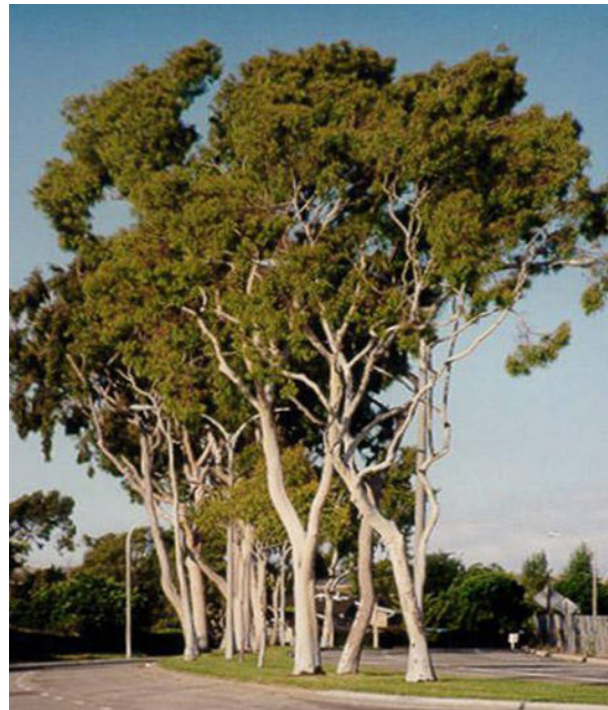
- SITE BOUNDARY
- IRRIGATED GARDENBED 1200mm DEPTH
- IRRIGATED GARDENBED 1000mm DEPTH
- IRRIGATED GARDENBED 500mm DEPTH
- INSITU CONCRETE PAVING PORTLAND GREY WITH BROOM FIN
- PLANTER WALL

NOTE: All public realm treatment outside the project site for illustrative purposes only.

3.2. Chandler Highway - Sections



3.3. Chandler Highway - Planting Palette & Schedule

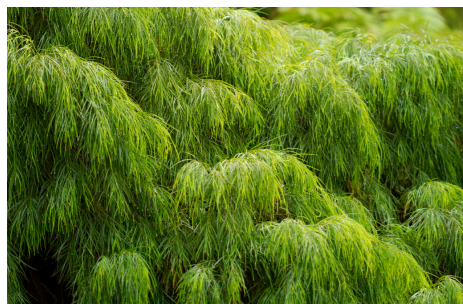


Corymbia citriodora
Lemon-scented Gum



Corymbia citriodora 'Scentuous'
Dwarf lemon-scented Gum

PLANTING SCHEDULE - CHANDLER HIGHWAY							
	Botanical Name	Common Name	Mature Size (H x W)	Install Size			Density (per m2)
TREES							
COR.CIT	<i>Corymbia citriodora</i>	Lemon-scented Gum	20 x 8m	100L 2.5m ht. 40mm Caliper	14.9 cu.m	as shown	N/A
COR.SCE	<i>Corymbia citriodora</i> 'Scentuous'	Dwarf lemon-scented Gum	8 x 6	100L 2.5m ht. 40mm Caliper	6.15 cu.m	as shown	N/A
SHRUBS, GRASSES & GROUNDCOVERS MIX							
	<i>Acacia cognata</i> 'Green Mist'	River Wattle	1 x 1	200mm pot	-	0.75	1.8
	<i>Dianella cerulea</i>	Dianella	0.5 x 0.4	140mm pot	-	0.5	4
	<i>Dianella longifolia</i>	Smooth Flax Lily	.3-.75 x .5	140mm pot	-	0.5	4
	<i>Dichondra argentea</i>	Silver Falls	0.3 x 0.1	140mm pot	-	0.3	11
	<i>Goodenia ovata</i>	Hop Goodenia	0.2 x 1	200mm pot	-	1	1
	<i>Helichrysum italicum</i>	Curry Plant	0.4 x 0.4	140mm pot	-	0.5	4
	<i>Lomandra hystrix</i>	Green Mat-rush	1 x 1	200mm pot	-	0.75	1.8
	<i>Lomandra</i> 'Tanika'	Tanika	1 x 1	200mm pot	-	0.75	1.8
	<i>Myoporum parvifolium</i>	Creeping Boobialla	0.4 x 0.1	140mm pot	-	1	1
	<i>Poa ensiformis</i>	Sword Tussock	1 x 1	200mm pot	-	0.75	1.8
	<i>Strelitzia reginae</i>	Bird of Paradise	1.2 x 1.2	200mm pot	-	1	1



Acacia cognata 'Green Mist'
River Wattle



Dianella cerulea
Paroo Lily



Dianella longifolia
Smooth Flax Lily



Dichondra argentea
Silver Falls



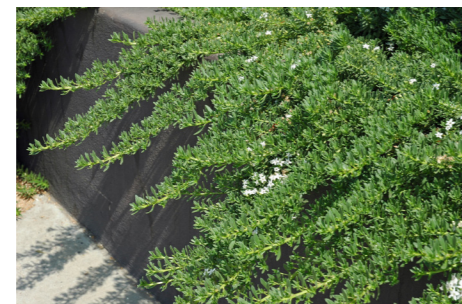
Goodenia ovata
Hop Goodenia



Helichrysum italicum
Curry Plant



Lomandra hystrix
Green-Mat Rush



Myoporum parvifolium
Creeping Boobialla



Pennisetum alopecuroides
Pennstripe



Lomandra 'Tanika'
Tanika



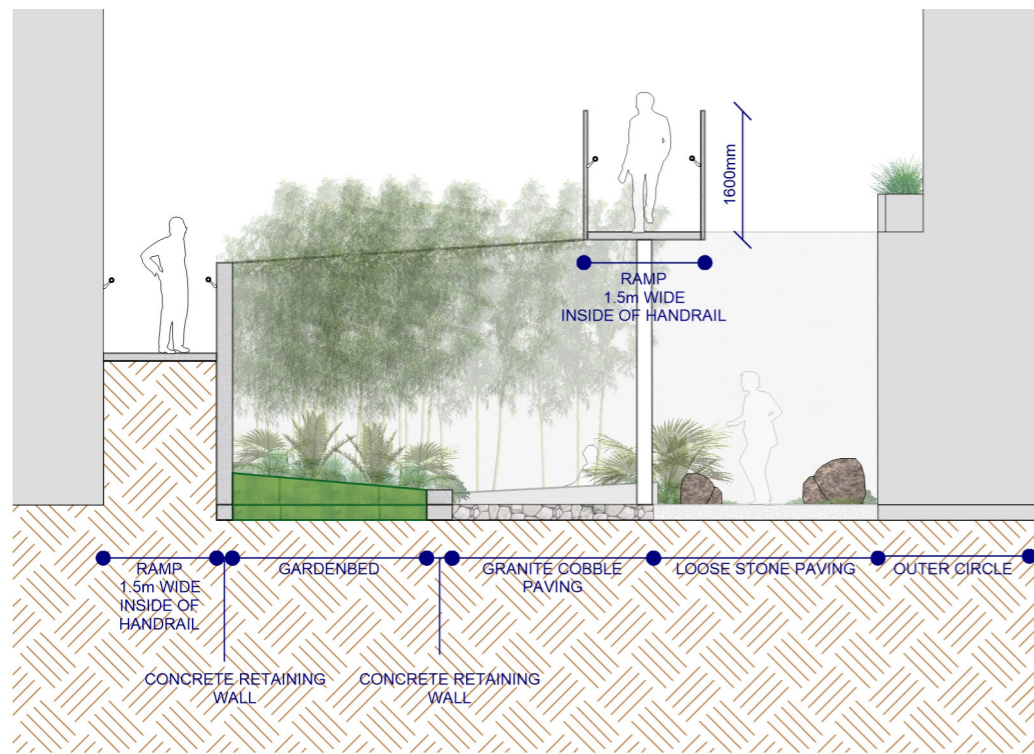
Poa ensiformis
Sword Tussock



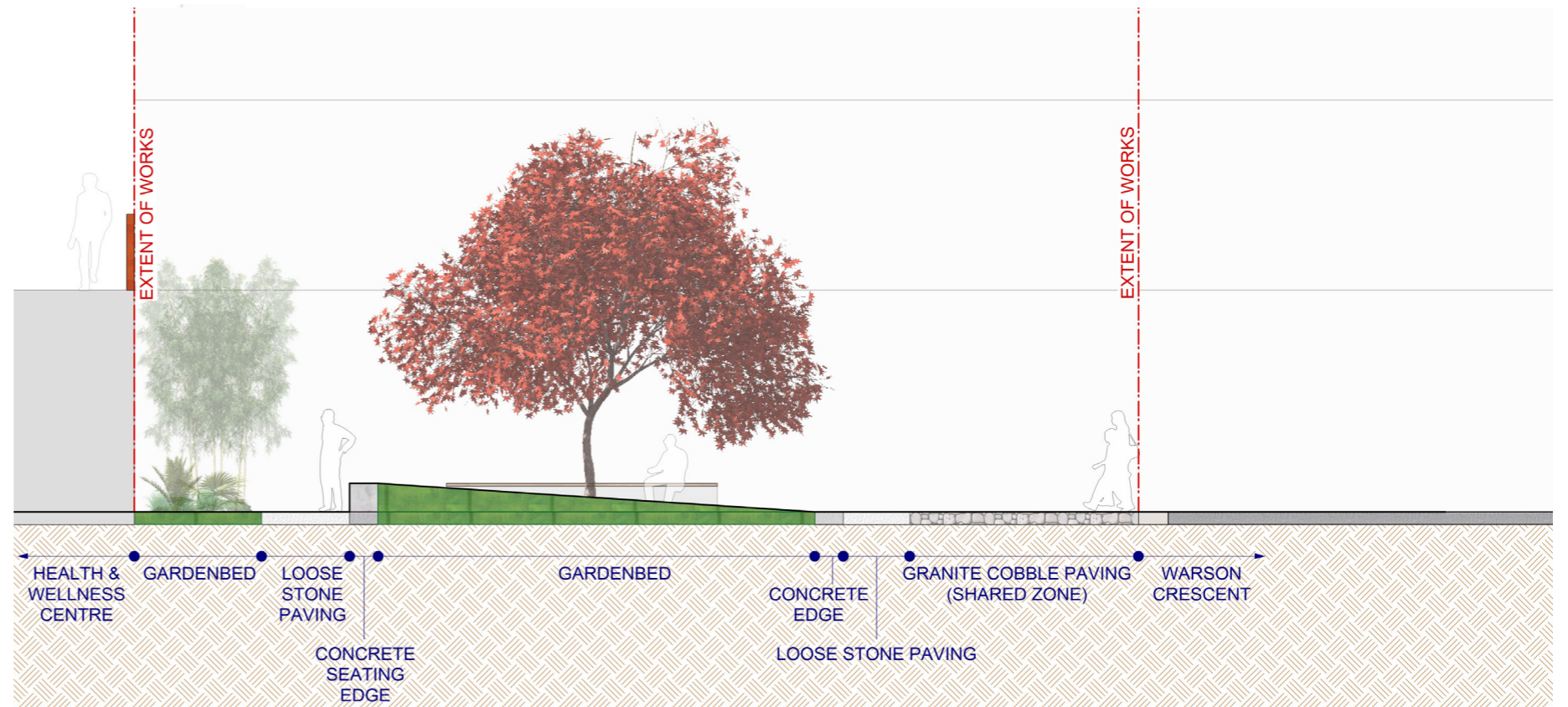
Strelitzia reginae
Bird of Paradise

4. Health & Wellness Centre

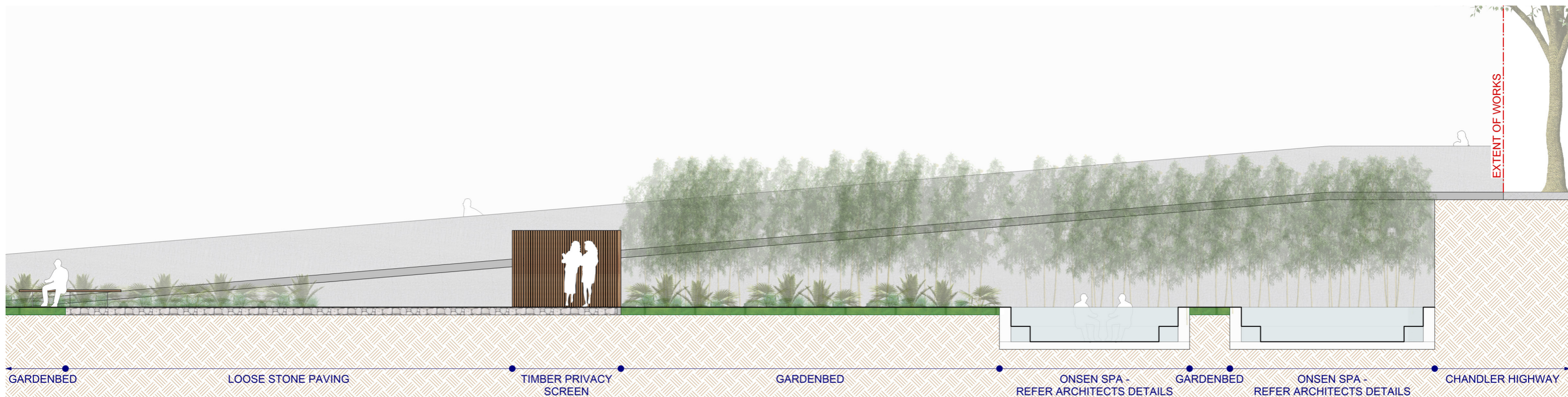
4.1. Health & Wellness Centre - Sectional Elevations



Sectional Elevation H - Health & Wellness Centre Onsen Zone (Scale 1:100 @A3)



Sectional Elevation I - Health & Wellness Centre Forecourt Entry (Scale 1:100 @A3)



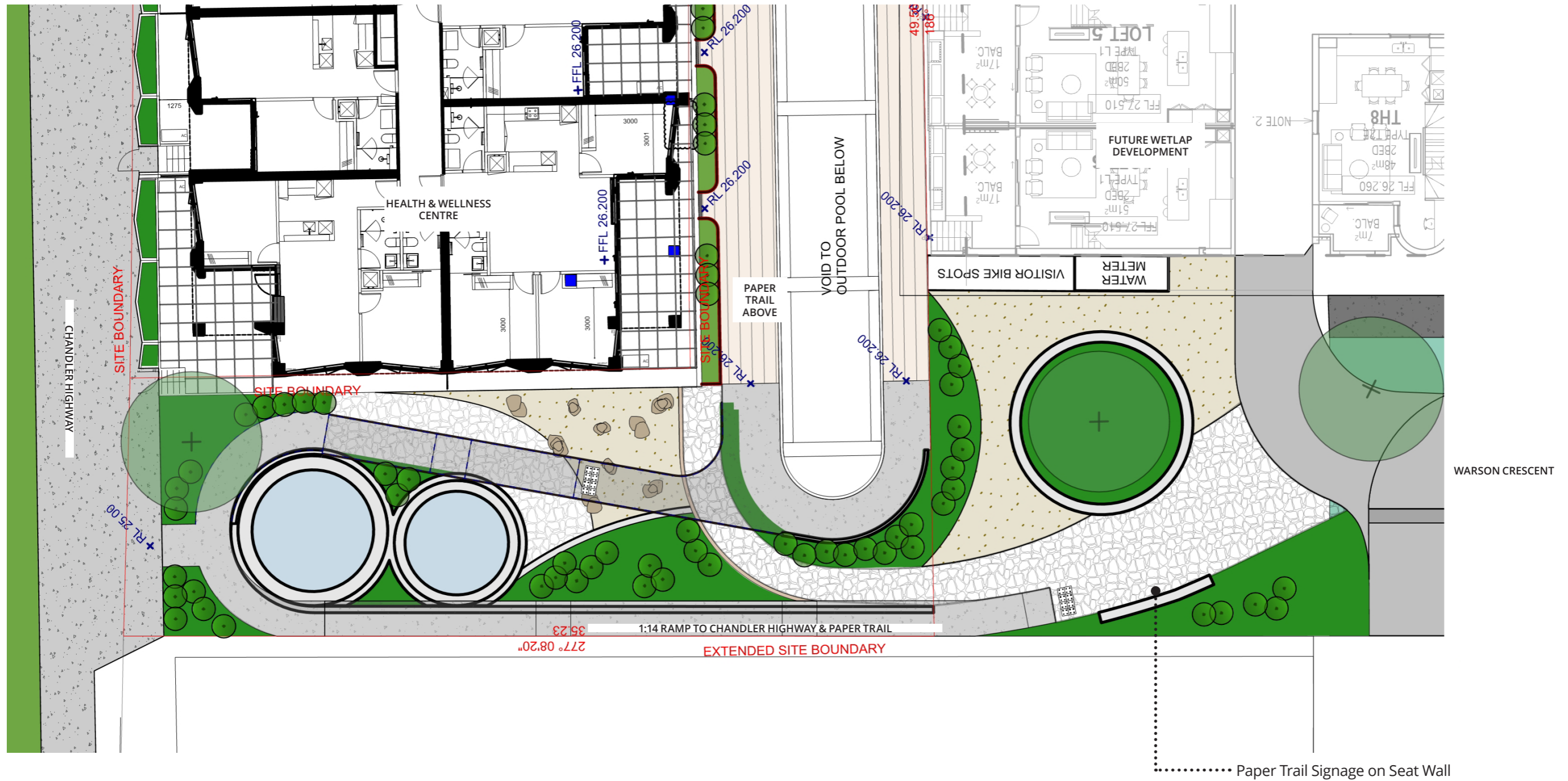
Sectional Elevation J - Health & Wellness Centre Forecourt Entry, Onsen Zone & Public Ramp to Chandler Highway & Paper Trail Above (Scale 1:100 @A3)

4.2. Health & Wellness Onsen - Indicative View



Indicative Render (By Others)

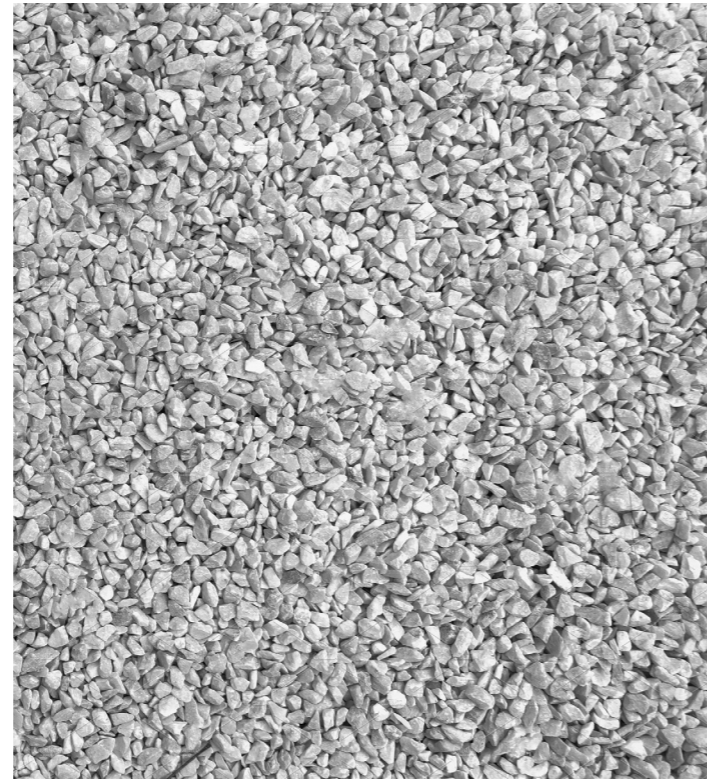
4.3. Health & Wellness Centre - Key Levels Plan



4.4. Health & Wellness Centre - Materials & Furniture



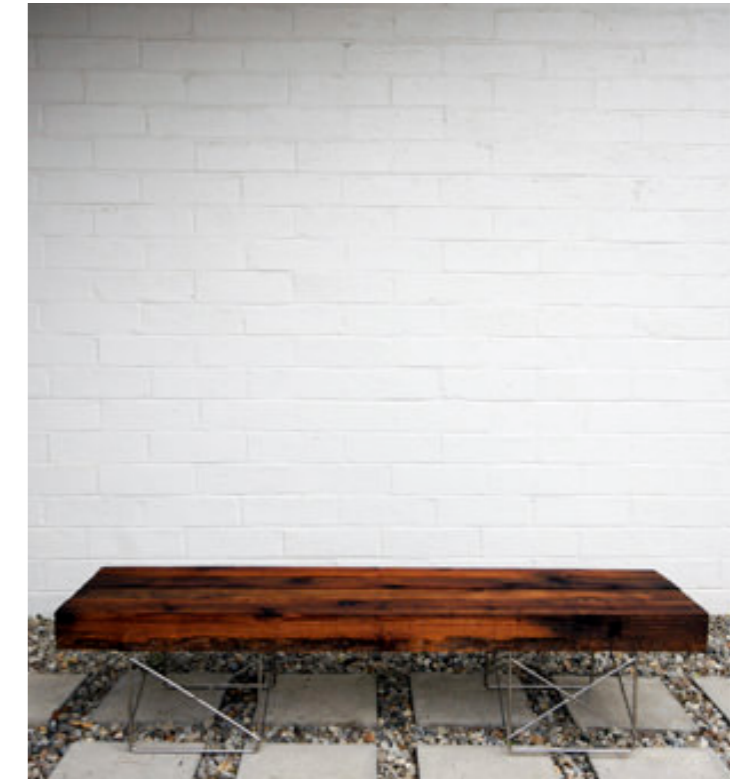
Granite Cobblestone Paving



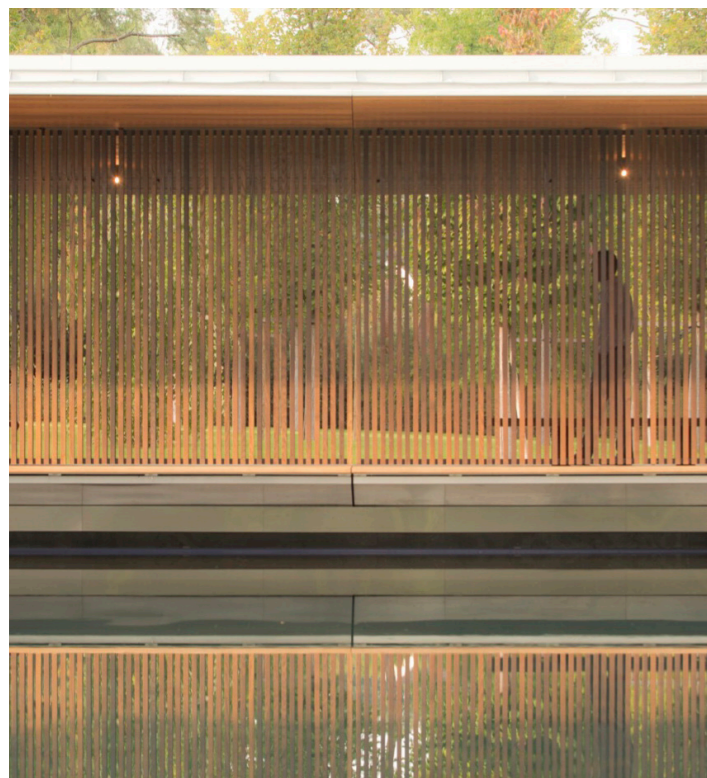
White Loose Stone



Raised lawn



Timber seating



Timber privacy screen



Zen garden with feature rockwork



Low concrete wall to gardenbed

4.5. Health & Wellness Centre - Planting Palette



Acer palmatum
Japanese Maple



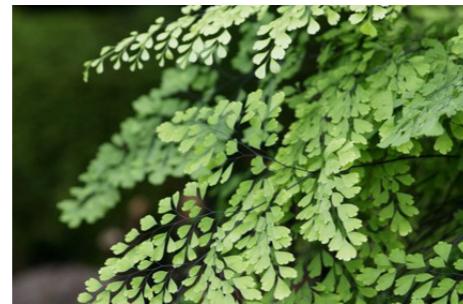
Dypsis baronii
Sugar Cane Palm



Bambusa lako
Timor Black Bamboo



Asplenium australasicum
Birds Nest Fern



Adiantum aethopicum
Common Maidenhair



Blechnum nudum
Fishbone Water Fern



Cyathea cooperi
Lacy Tree Fern



Dichondra repens
Kidney Weed



Dicksonia antarctica
Soft Tree Fern



Doodia aspera
Prickly Rasp Fern



Fatsia japonica
Glossy-leaf Paper Plant



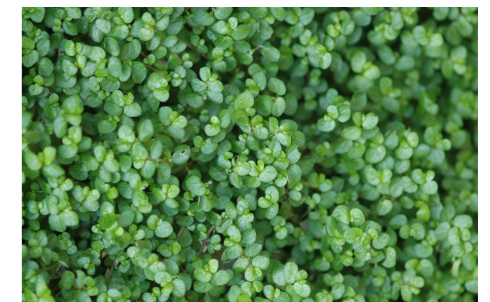
Lomandra hystrix
Green-Mat Rush



Philodendron xanadu
Philodendron



Polystichum proliferum
Mother-Shield Fern



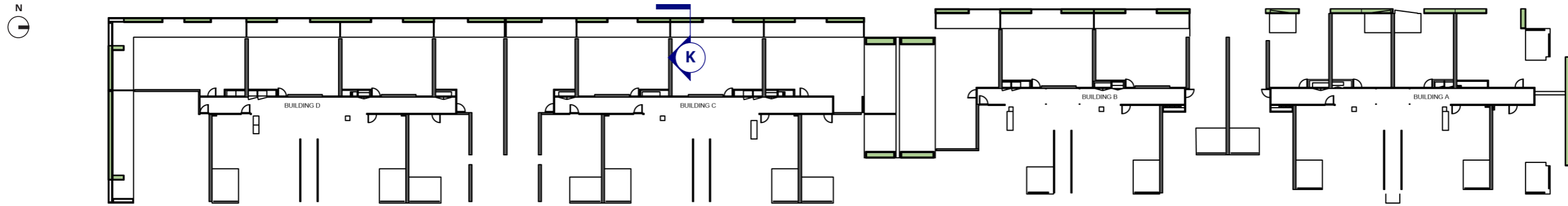
Soleirolia soleirolia
Baby's Tears

4.6. Health & Wellness Centre - Planting Schedule

PLANTING SCHEDULE - HEALTH & WELLNESS CENTRE							
	Botanical Name	Common Name	Mature Size (H x W)	Install Size			Density (per m2)
TREES							
ULM.PAR	Ulmus parvifolia	Chinese Elm	10 x 8	100L 2.5m ht. 40mm Caliper	14.9 cu.m	as shown	N/A
BAMBOO							
	Bambusa lako	Timor Black Bamboo	12 x 1	50L		as shown	N/A
	Himalayacalamus porcatus	Nepalese Blue Bamboo	5 x 3	50L		as shown	N/A
SHRUBS, GRASSES & GROUNDCOVERS MIX							
	Adiantum aethiopicum	Common Maidenhair	1 x 1	200mm pot	-	0.5	4
	Asplenium australasicum	Birds Nest Fern	1.5 x 1.5	200mm pot	-	0.75	1.8
	Blechnum nudum	Fishbone Water-fern	1. x 1	200mm pot	-	0.5	4
	Cyathea cooperi	Lacy Tree Fern	5 x 4	200mm pot	-	1.5	0.44
	Dichondra repens	Kidney Weed	.15 x .6-1	140mm pot	-	0.3	11
	Dicksonia antarctica	Soft Tree Fern	2-4 x 2-4	200mm pot	-	1.5	0.44
	Doodia Aspera	Prickly Rasp Fern	0.4 x 0.6	140mm pot	-	1.5	0.44
	Dypsis baronii	Sugar Cane Palm	3 x 3.5	200mm pot	-	1.5	0.44
	Fatsia japonica	Glossy-leaf Paper Plant	1.5 x 1.5	200mm pot	-	1.5	0.44
	Lomandra hystrix	Green Mat-rush	1 x 1	200mm pot	-	0.75	1.8
	Philodendron xanadu	Philodendron	1 x 1	200mm pot	-	1	1
	Polystichum proliferum	Mother Shield Fern	2 x 2	200mm pot	-	0.5	4
	Soleirolia soleirolia	Baby's Tears	.15 x .6-1	140mm pot	-	0.5	4

5. Upper Level Balcony Planters

5.1. Upper Level Balcony Planters - Typical Concept Plan & Section



Upper Level Balconies - Typical Concept Plan (N.T.S)

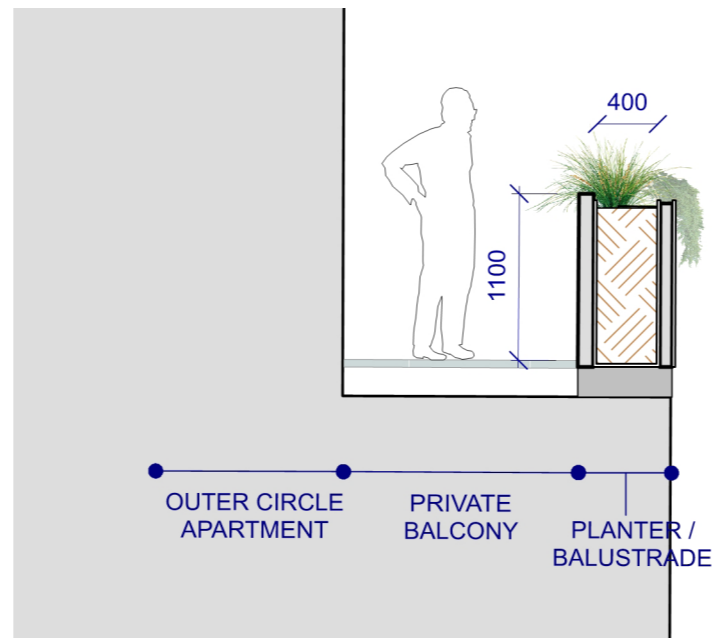
A number of balconies to upper levels are provided with a series of linear planters. These also act as balustrades.

Planting to these will consist of verdant trailing species as well as accent strappy and small shrub species that have been selected for the range of day light exposure around the buildings.

These will provide visual interest to the residents, as well as a year-round green fringe to the upper levels of the building when seen from a far.

These planters will be irrigated, and contain an engineered high quality planter mix with low organic content, high water holding capacity, and low air filler porosity - to ensure good establishment and on-going health and vigour of the plants.

Maintenance will be by the residents, with a guide to be provided to ensure species are not replaced with anything unsuitable from a visual and tolerance point of view.



Section K - Level 04 Typical Planters (Scale 1:50 @A3)

5.2. Upper Level Balcony Planters - Typical Planting Palette & Schedule

PLANTING SCHEDULE - LEVEL 04 PLANTERS							
Botanical Name	Common Name	Mature Size (H x W)	Install Size				Density (per m2)
SHRUBS, GRASSES & GROUNDCOVERS MIX							
Casaurina glauca 'Cousin It'	Cousin It	0.4 x 0.8	140mm pot	-	0.75		1.8
Clivia miniata 'Shademaster Yellow'	Bush Lily	0.8 x 0.8	140mm pot	-	0.5		4
Convolvulus sabatius	Blue rock bindweed	0.2 x 0.8	140mm pot	-	0.5		4
Dianella longifolia	Smooth Flax Lily	0.6 x 0.6	140mm pot	-	0.75		1.8
Juniperus taxifolia 'Lutchuensis'	Creeping Juniper	0.3 x 0.7	140mm pot	-	0.75		1.8
Rhipsalis baccifera	Mistletoe Cactus	0.5 x 0.5	140mm pot	-	0.5		4
Rosmarinus officinalis Prostratus	Prostrate Rosemary	0.3 x 1.0	140mm pot	-	0.75		1.8
Myoporum parvifolium 'broad leaf'	Creeping Boobialla	0.3 x 0.7	140mm pot	-	0.75		1.8



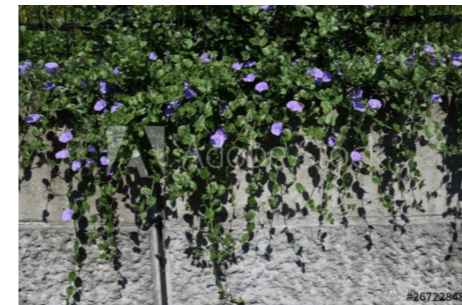
Casaurina glauca 'Cousin It'
Cousin It



Clivia miniata 'Shademaster Yellow'
Bush Lily



Dianella longifolia
Smooth Flax Lily



Convolvulus sabatius
Blue rock bindweed



Juniperus taxifolia 'Lutchuensis'
Creeping Juniper



Rhipsalis baccifera
Mistletoe Cactus



Rosmarinus officinalis Prostratus
Prostrate Rosemary



Myoporum parvifolium 'broad leaf'
Creeping Boobialla



Trachelospermum 'Flat Mat'
Flat Mat



Westringea 'Grey Box'
Native Rosemary

ASPECT Studios™

Level 4, 160 Queen Street

Melbourne, VIC, 3058

P// +61 3 9417 6844

F// +61 3 9417 6855

www.aspect-studios.com