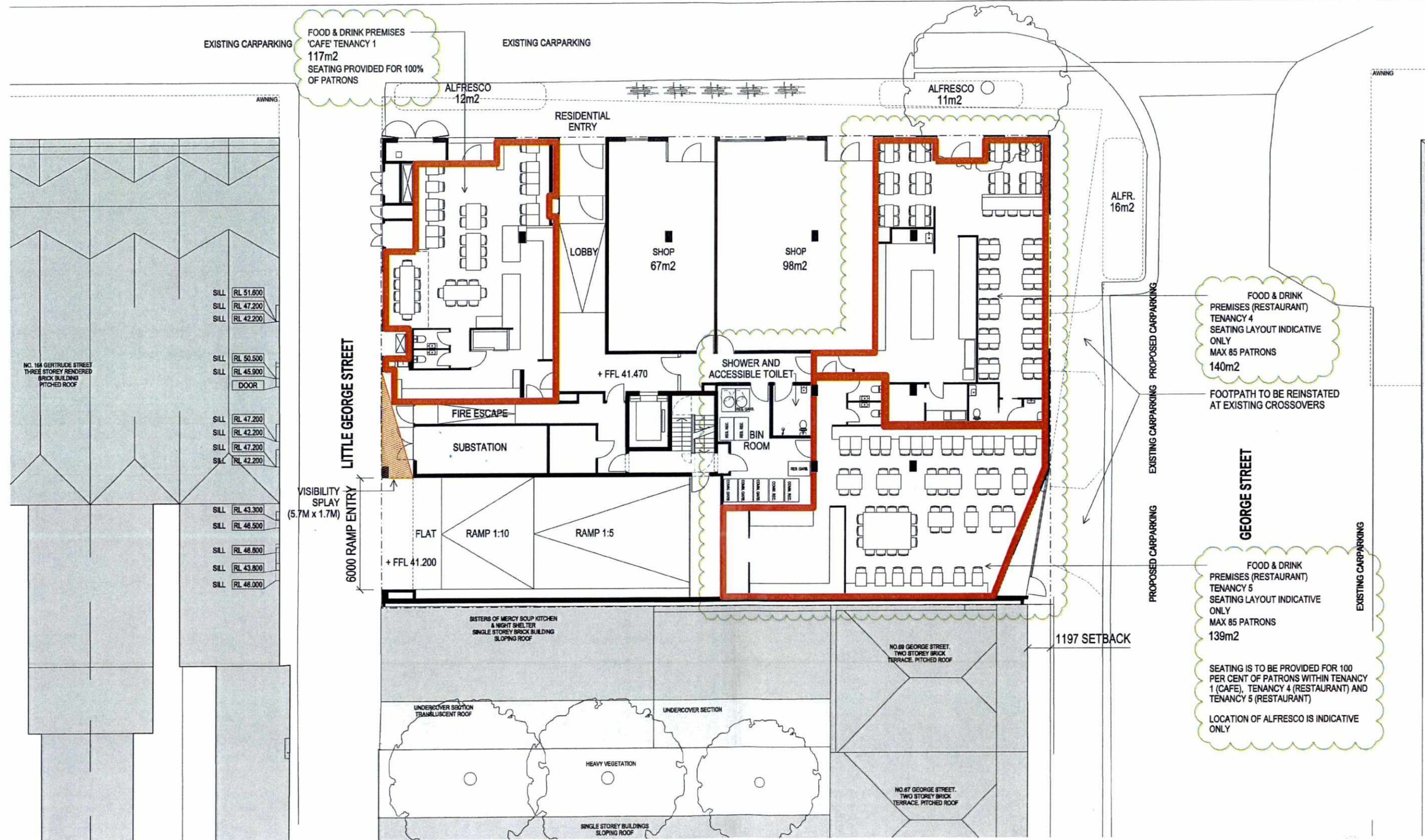


GERTRUDE STREET

AREAS CLOUDED IN GREEN REPRESENT AMENDMENTS INITIATED BY THE APPLICANT



CITY OF YARRA
17 SEP 2019
RECEIVED

jacksonclémentsburrows

Jackson Clements Burrows Pty Ltd Architects
One Harwood Place Melbourne 3000 Australia
Telephone 03 9654 6227 Facsimile 03 9654 6195
Email jacksonclémentsburrows@jcb.com.au
www.jcb.com.au

1:100@A1 0 1.0 2.5 5.0M
1:200@A3

GERTRUDE STREET
FITZROY

GROUND FLOOR PLAN

REV. 6
JULY 2019

A1 - 102