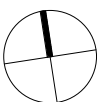


**architectus**  
 Architectus Group Pty Ltd is the owner of the copyright subsisting in these drawings, plans, designs and specifications. They must not be used, reproduced or copied, in whole or in part, nor may the information, ideas and concepts therein contained (which are confidential to Architectus Group Pty Ltd) be disclosed to any person without the prior written consent of that company.

Nominated Architect  
 Ray Brown, NSWARB 6359

issue	amendment	date
A	Issue for Town Planning Submission	18/12/2019
B	RFI Issue for Town Planning Submission	19/02/2020
C	RFI #2 Issue for Town Planning Submission	16/04/2020



project **480 Swan Street**

drawing **Level 09**

drawing no. **DA1012** issue **C**

16/04/20 8:08:23 AM

**architectus™**

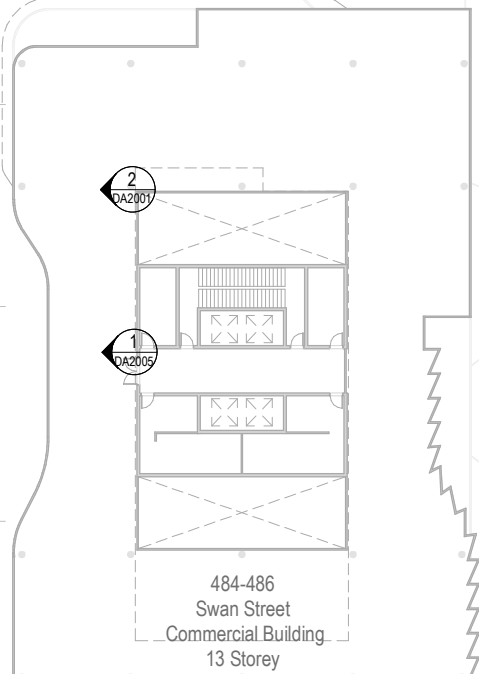
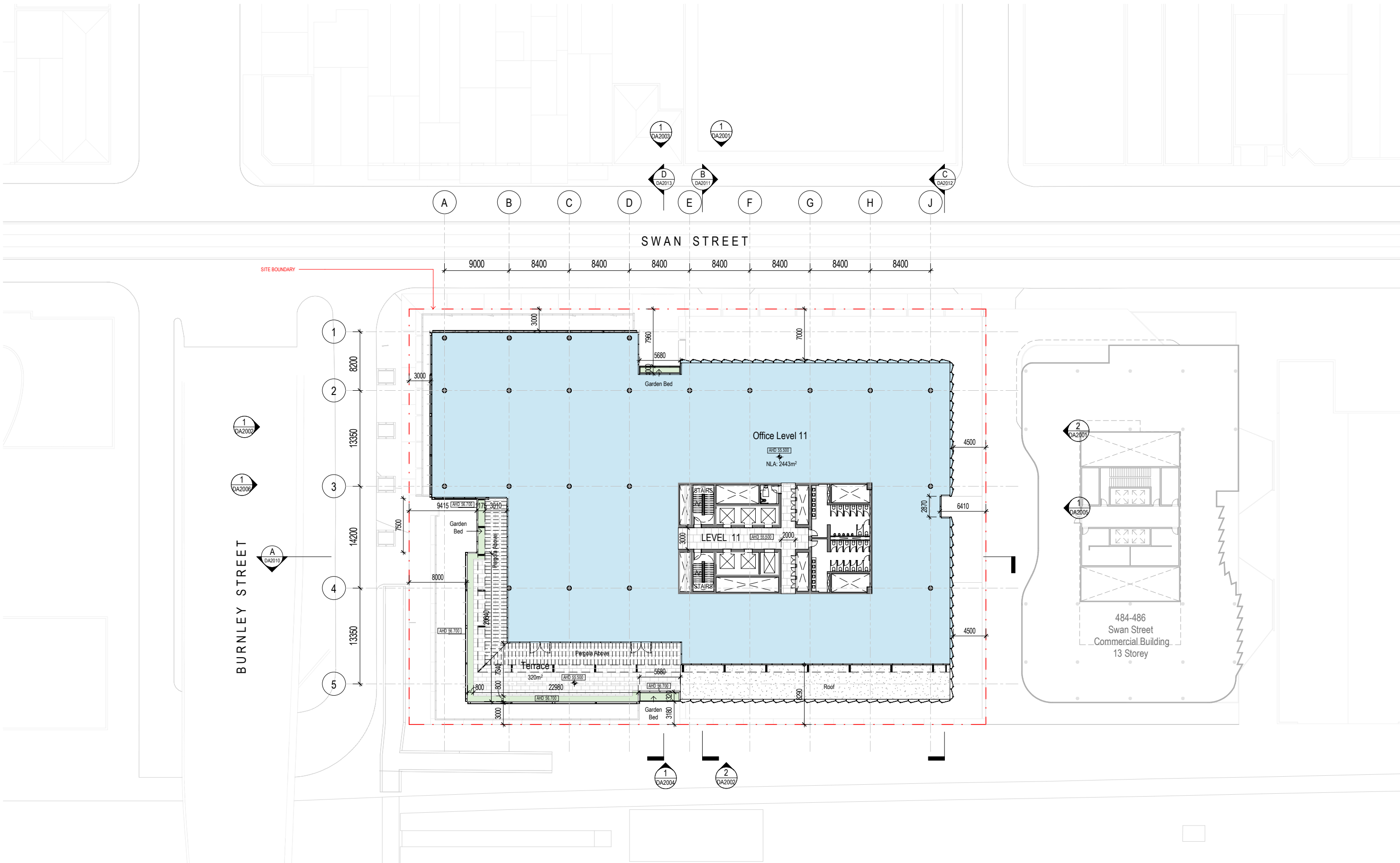
Sydney  
 Melbourne  
 Adelaide  
 Perth  
 Auckland  
 Christchurch  
 Brisbane

Architectus Melbourne  
 Level 25, 385 Bourke Street  
 Melbourne  
 VIC 3000  
 T (61 3) 9429 5733  
 F (61 3) 9429 8480  
 melbourne@architectus.com.au  
 ABN 90 131 245 684

checked RA scale 1 : 250@A1  
 drawn EM/AR project no 190060

Do not scale drawings. Verify all dimensions on site





**architectus**  
 Architectus Group Pty Ltd is the owner of the copyright subsisting in these drawings, plans, designs and specifications. They must not be used, reproduced or copied, in whole or in part, nor may the information, ideas and concepts therein contained (which are confidential to Architectus Group Pty Ltd) be disclosed to any person without the prior written consent of that company.

Nominated Architect  
 Ray Brown, NSWARB 6359

issue	amendment	date
A	Issue for Town Planning Submission	18/12/2019
B	RFI Issue for Town Planning Submission	19/02/2020
C	RFI #2 Issue for Town Planning Submission	16/04/2020

**architectus™**

Sydney  
 Melbourne  
 Adelaide  
 Perth  
 Auckland  
 Christchurch  
 Brisbane

**Architectus Melbourne**  
 Level 25, 385 Bourke Street  
 Melbourne  
 VIC 3000

T (61 3) 9429 5733  
 F (61 3) 9429 8480  
 melbourne@architectus.com.au  
 ABN 90 131 245 684

checked RA scale 1 : 250@A1  
 drawn EM/AR project no 190060

project 480 Swan Street

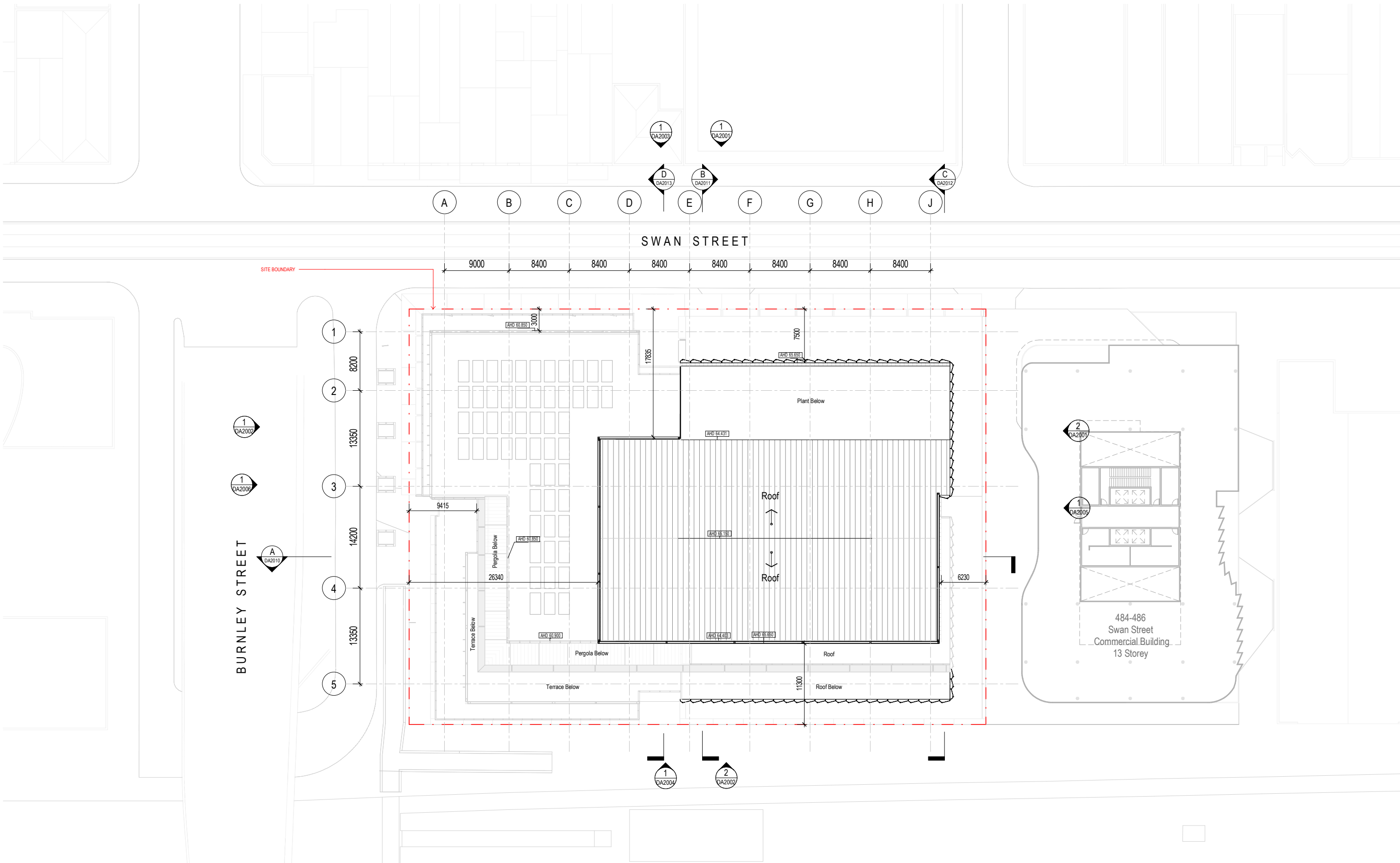
drawing Level 11

drawing no. DA1014 issue C

16/04/20 8:08:46 AM

Do not scale drawings. Verify all dimensions on site





**architectus**  
 Architectus Group Pty Ltd is the owner of the copyright subsisting in these drawings, plans, designs and specifications. They must not be used, reproduced or copied, in whole or in part, nor may the information, ideas and concepts therein contained (which are confidential to Architectus Group Pty Ltd) be disclosed to any person without the prior written consent of that company.  
 Nominated Architect  
 Ray Brown, NSWARB 6359

issue	amendment	date
A	Issue for Town Planning Submission	18/12/2019
B	RFI Issue for Town Planning Submission	19/02/2020
C	RFI #2 Issue for Town Planning Submission	16/04/2020

project: 480 Swan Street

drawing: Roof

checked: RA scale: 1 : 250@A1

drawn: EM/AR project no: 190060

drawing no: DA1016

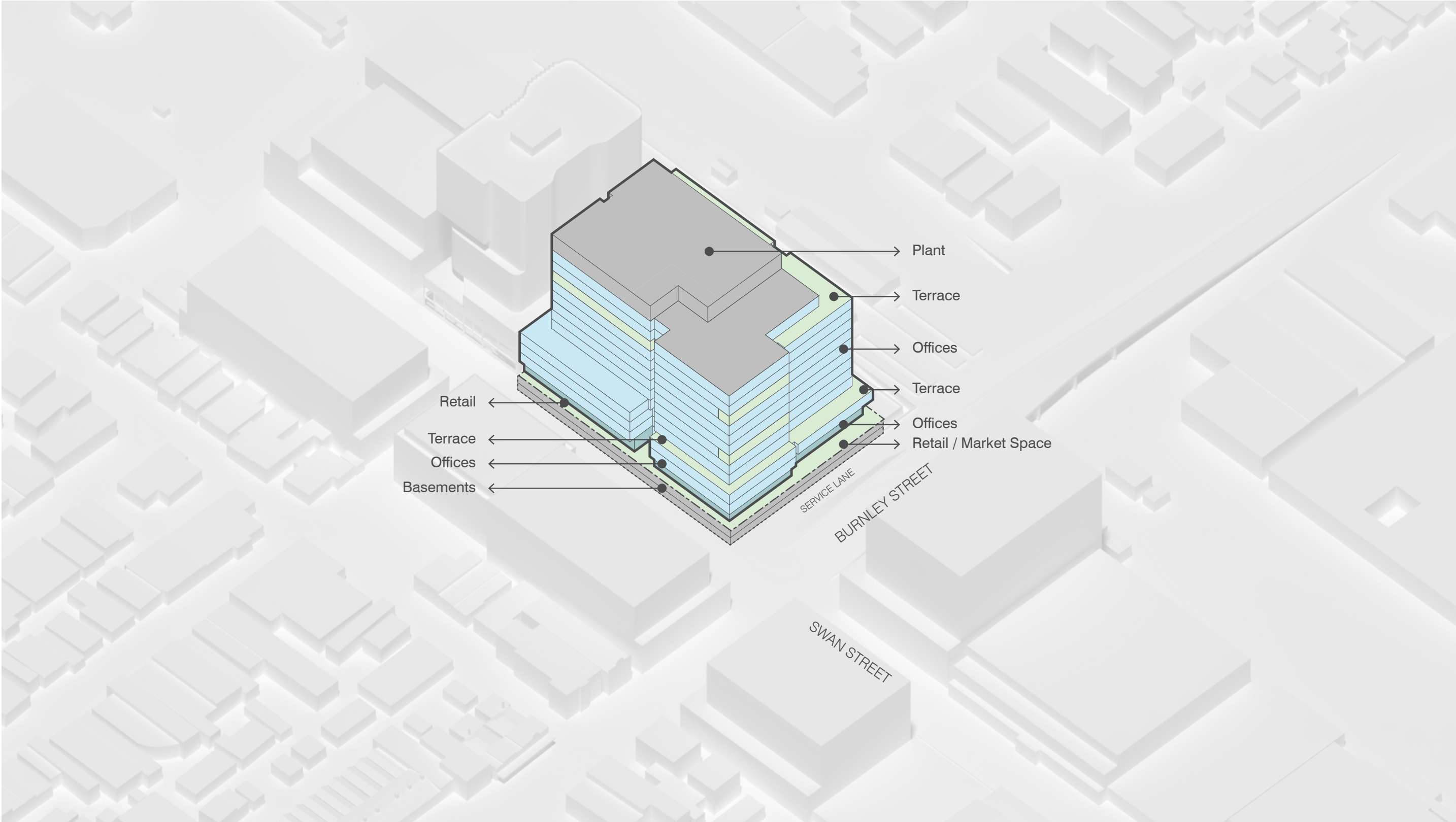
issue: C

16/04/20 8:09:01 AM

**architectus**<sup>TM</sup>  
 Sydney Melbourne Adelaide Perth Auckland Christchurch Brisbane  
 Architectus Melbourne  
 Level 25, 385 Bourke Street  
 Melbourne VIC 3000  
 T (61 3) 9429 5733  
 F (61 3) 9429 8480  
 melbourne@architectus.com.au  
 ABN 90 131 245 684

Do not scale drawings. Verify all dimensions on site





# Design Proposal

	No. of Levels	Height (m)	GFA (m <sup>2</sup> )	NLA (m <sup>2</sup> ) Office	Terrace (m <sup>2</sup> )	Lobby (m <sup>2</sup> )	GLAR (m <sup>2</sup> ) Retail & F&B	Efficiency	core/BOH/ circ (m <sup>2</sup> )	Car Park No.
<b>Basement - Carparking</b>										
Basement 2	1	2.75	4418						986	<b>114</b>
Basement 1	1	3.10	4418						986	<b>108</b>
<b>Total</b>	<b>2.0</b>	<b>5.85</b>	<b>8836.0</b>						<b>1972.0</b>	<b>222.0</b>
<b>Podium</b>										
L00 - Lobby/Retail/Services	1	5.00	4440			455	1626		1841	
L-01	1	3.85	4089	3155	341			85%	545	
L-02	1	3.85	3823	3099	370			85%	545	
<b>Total</b>	<b>3</b>	<b>12.70</b>	<b>12,352</b>	<b>6,254</b>	<b>711</b>	<b>455</b>	<b>1,626</b>		<b>2,931</b>	
<b>Tower - Commercial</b>										
L-03	1	3.85	3886	2890	663			87.36%	418	
L-04	1	3.85	3389	2830				87.13%	418	
L-05	1	3.85	3308	2890				87.36%	418	
L-06	1	3.85	3386	2968				87.66%	418	
L-07	1	3.85	3386	2968				87.66%	418	
L-08	1	3.85	3386	2968				87.66%	418	
L-09	1	3.85	3404	2873				87.30%	418	
L-10	1	3.85	3386	2968				87.66%	418	
L-11	1	4.15	3096	2443	333			85.39%	418	
PLANT - ROOF		6.00	1363							
<b>Total</b>	<b>9</b>	<b>40.95</b>	<b>31,990</b>	<b>25,798</b>	<b>996</b>				<b>3,762</b>	
<b>Grand Total</b>	<b>12</b>	<b>53.65</b>	<b>53,178</b>	<b>32,052</b>	<b>1,707</b>	<b>455</b>	<b>1,626</b>		<b>6,693</b>	<b>222</b>

**Note:**

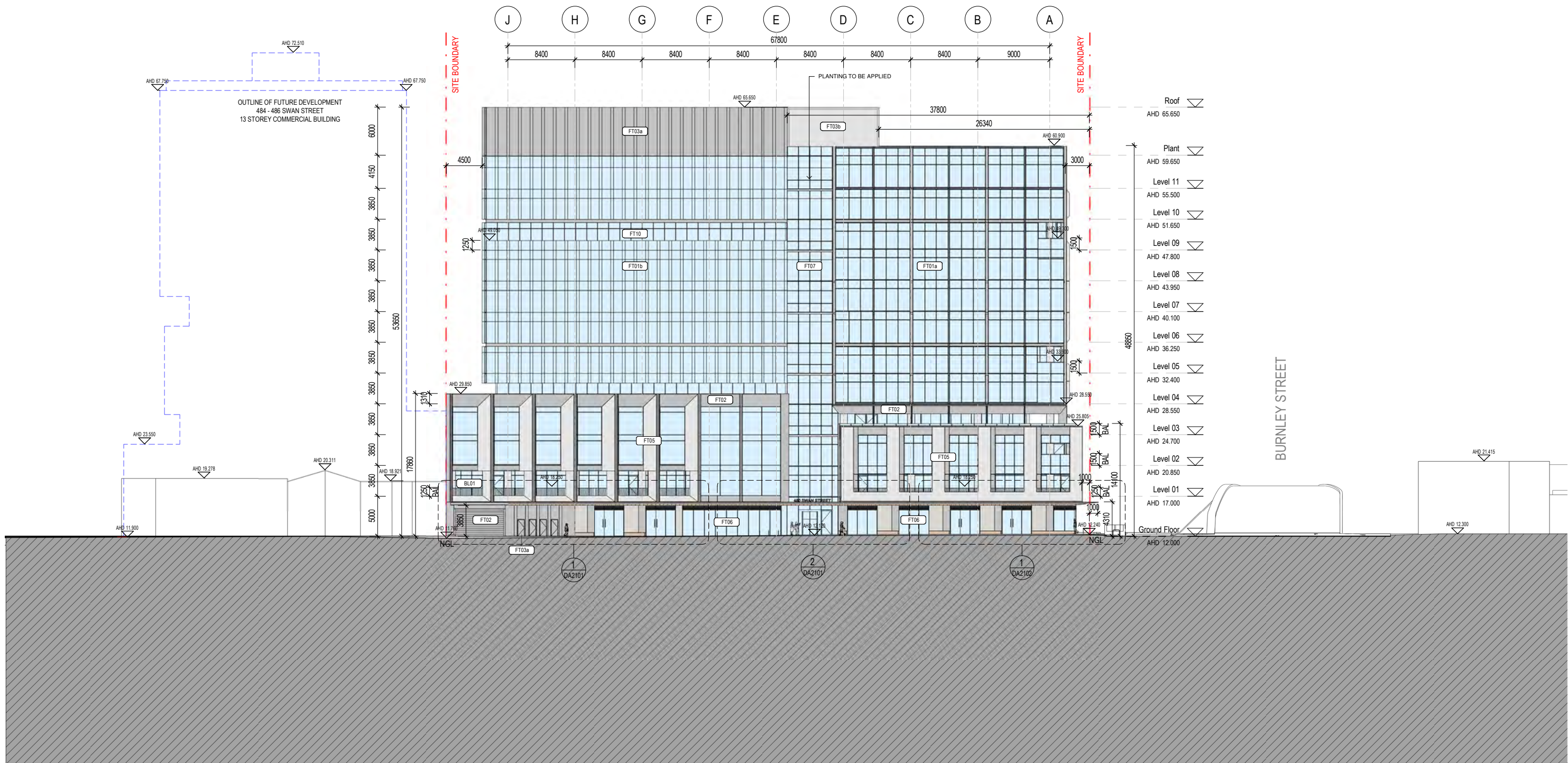
GFA = FECA + UCA

FECA & UCA calculated in accordance with The Australian Institute of Quantity Surveyors, Book of Areas for analysis and comparison of buildings, Canberra, August 20004









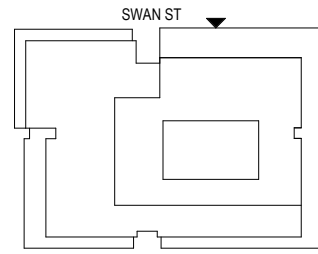
**architectus**  
 Architectus Group Pty Ltd is the owner of the copyright subsisting in these drawings, plans, designs and specifications. They must not be used, reproduced or copied, in whole or in part, nor may the information, ideas and concepts therein contained (which are confidential to Architectus Group Pty Ltd) be disclosed to any person without the prior written consent of that company.  
 Nominated Architect  
 Ray Brown, NSWARB 6359

issue	amendment	date
A	Issue for Town Planning Submission	18/12/2019
B	RFI Issue for Town Planning Submission	19/02/2020
C	RFI #2 Issue for Town Planning Submission	16/04/2020

**MATERIAL SCHEDULE**

<b>FT01a</b>	Glazed curtain wall system Type 1 - Integrated Express Mullion
<b>FT01b</b>	Glazed curtain wall system Type 2 - Articulated Facade System
<b>FT02</b>	Grey Powdercoated Coloured Aluminium
<b>FT03a</b>	Grey Powdercoated Coloured Aluminium Perforated Facade System
<b>FT03b</b>	Grey Powdercoated Coloured Aluminium Horizontal Louvre Screen Facade System
<b>FT04</b>	Grey/Brown Brick with natural finish
<b>FT05</b>	GRC or similar cladding panel system with a textured finish

<b>FT06</b>	Glazed Shop Front
<b>FT07</b>	Stainless Steel Wire Screen for Landscape
<b>FT08</b>	Aluminium Click on Batten or similar
<b>FT09</b>	Precast concrete wall
<b>FT10</b>	Glazed curtain wall
<b>BL01</b>	Metal Balustrade
<b>LV01</b>	Grey Powdercoated Coloured Aluminium Horizontal Louvres



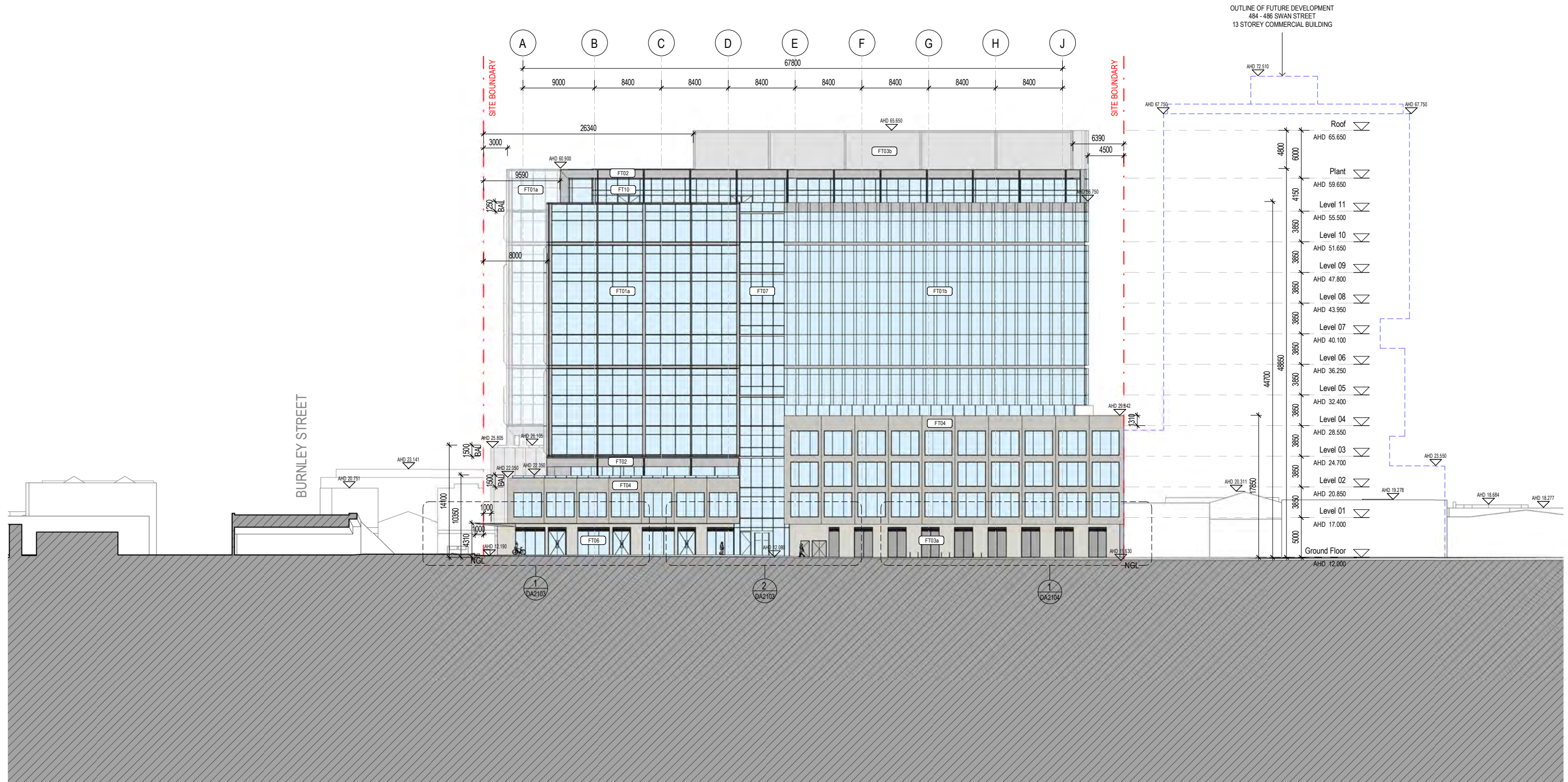
**architectus™**  
 Sydney  
 Melbourne  
 Adelaide  
 Perth  
 Auckland  
 Christchurch  
 Brisbane

**Architectus Melbourne**  
 Level 25, 385 Bourke Street  
 Melbourne  
 VIC 3000  
 T (61 3) 9429 5733  
 F (61 3) 9429 8480  
 melbourne@architectus.com.au  
 ABN 90 131 245 684

checked RA scale As indicated@A1  
 drawn EM/AR project no 190060

project 480 Swan Street  
 drawing Building Elevation - North  
 drawing no. DA2003  
 issue C  
 16/04/20 8:09:59 AM





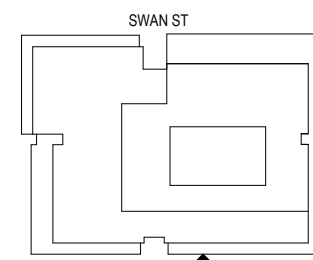
**architectus**  
 Architectus Group Pty Ltd is the owner of the copyright subsisting in these drawings, plans, designs and specifications. They must not be used, reproduced or copied, in whole or in part, nor may the information, ideas and concepts therein contained (which are confidential to Architectus Group Pty Ltd) be disclosed to any person without the prior written consent of that company.  
 Nominated Architect  
 Ray Brown, NSWARB 6359

issue	amendment	date
A	Issue for Town Planning Submission	18/12/2019
B	RFI Issue for Town Planning Submission	19/02/2020
C	RFI #2 Issue for Town Planning Submission	16/04/2020

**MATERIAL SCHEDULE**

<b>FT01a</b>	Glazed curtain wall system Type 1 - Integrated Express Mullion
<b>FT01b</b>	Glazed curtain wall system Type 2 - Articulated Facade System
<b>FT02</b>	Grey Powdercoated Coloured Aluminium
<b>FT03a</b>	Grey Powdercoated Coloured Aluminium Perforated Facade System
<b>FT03b</b>	Grey Powdercoated Coloured Aluminium Horizontal Louvre Screen Facade System
<b>FT04</b>	Grey/Brown Brick with natural finish
<b>FT05</b>	GRC or similar cladding panel system with a textured finish

<b>FT06</b>	Glazed Shop Front
<b>FT07</b>	Stainless Steel Wire Screen for Landscape
<b>FT08</b>	Aluminium Click on Batten or similar
<b>FT09</b>	Precast concrete wall
<b>FT10</b>	Glazed curtain wall
<b>BL01</b>	Metal Balustrade
<b>LV01</b>	Grey Powdercoated Coloured Aluminium Horizontal Louvres



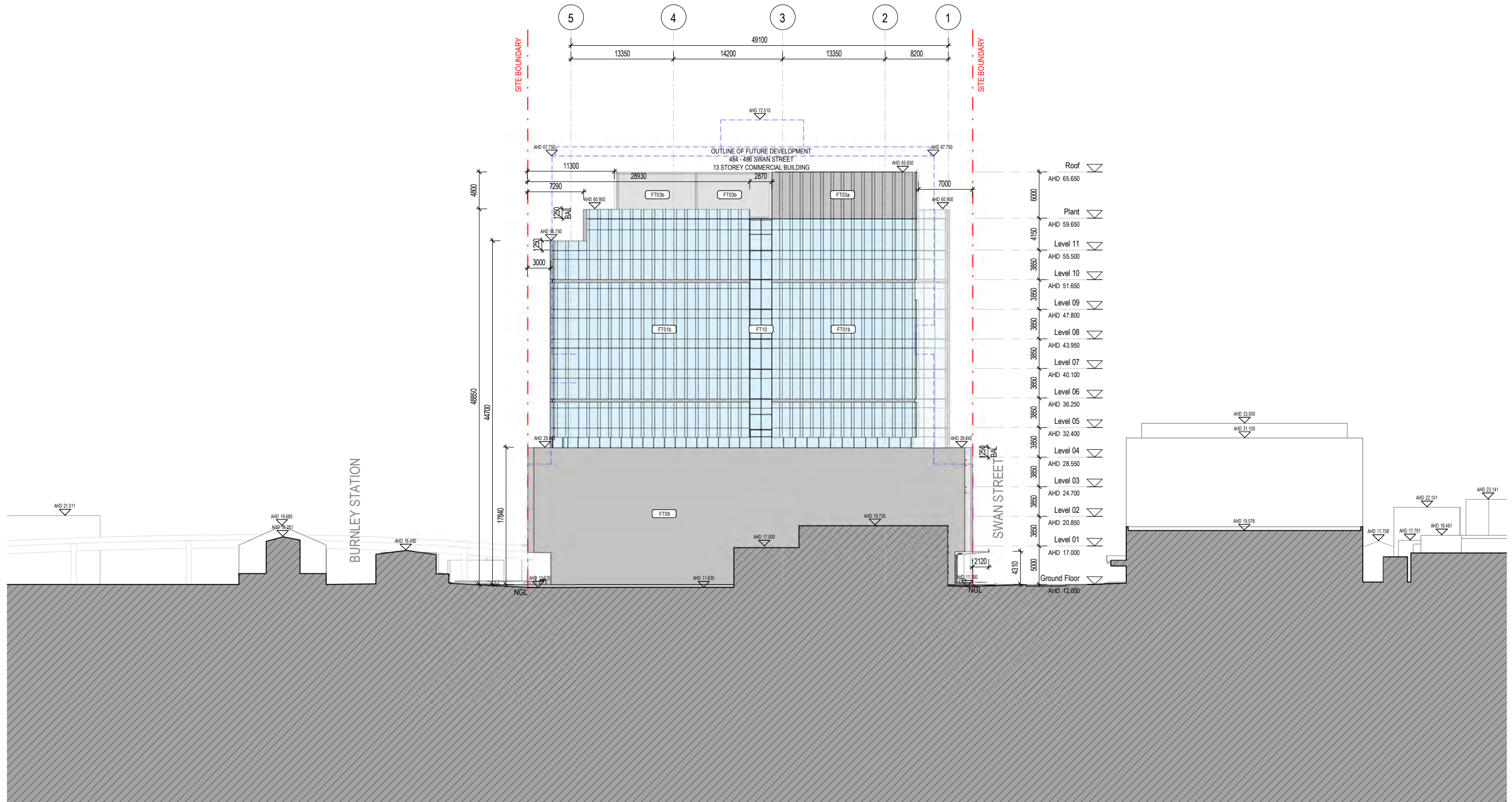
**architectus™**  
 Sydney  
 Melbourne  
 Adelaide  
 Perth  
 Auckland  
 Christchurch  
 Brisbane

**Architectus Melbourne**  
 Level 25, 385 Bourke Street  
 Melbourne  
 VIC 3000  
 T (61 3) 9429 5733  
 F (61 3) 9429 8480  
 melbourne@architectus.com.au  
 ABN 90 131 245 684

checked RA scale As indicated@A1  
 drawn EM/AR project no 190060

project 480 Swan Street  
 drawing Building Elevation - South  
 drawing no. DA2004  
 issue C  
 16/04/20 8:10:18 AM





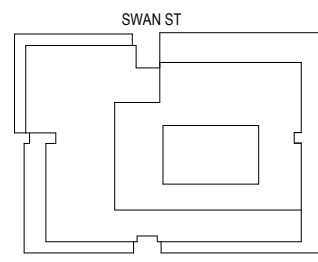
**architectus**  
 Architectus Group Pty Ltd is the owner of the copyright subsisting in these drawings, plans, designs and specifications. They must not be used, reproduced or copied, in whole or in part, nor may the information, ideas and concepts therein contained (which are confidential to Architectus Group Pty Ltd) be disclosed to any person without the prior written consent of that company.  
 Nominated Architect  
 Ray Brown, NSWARB 6359

issue	amendment	date
A	Issue for Town Planning Submission	18/12/2019
B	RFI Issue for Town Planning Submission	19/02/2020
C	RFI #2 Issue for Town Planning Submission	16/04/2020

**MATERIAL SCHEDULE**

FT01a	Glazed curtain wall system Type 1 - Integrated Express Mullion
FT01b	Glazed curtain wall system Type 2 - Articulated Facade System
FT02	Grey Powdercoated Coloured Aluminium
FT03a	Grey Powdercoated Coloured Aluminium Perforated Facade System
FT03b	Grey Powdercoated Coloured Aluminium Horizontal Louvre Screen Facade System
FT04	Grey/Brown Brick with natural finish
FT05	GRC or similar cladding panel system with a textured finish

FT06	Glazed Shop Front
FT07	Stainless Steel Wire Screen for Landscape
FT08	Aluminium Click on Batten or similar
FT09	Precast concrete wall
FT10	Glazed curtain wall
BL01	Metal Balustrade
LV01	Grey Powdercoated Coloured Aluminium Horizontal Louvres



**architectus™**  
 Sydney  
 Melbourne  
 Adelaide  
 Perth  
 Auckland  
 Christchurch  
 Brisbane

Architectus Melbourne  
 Level 25, 385 Bourke Street  
 Melbourne  
 VIC 3000  
 T (61 3) 9429 5733  
 F (61 3) 9429 8480  
 melbourne@architectus.com.au  
 ABN 90 131 245 684

checked RA scale As indicated@A1  
 drawn EM/AR project no 190060

project 480 Swan Street  
 drawing Building Elevation - East  
 drawing no. DA2005 issue C  
 16/04/20 8:10:34 AM







