

© State of Victoria. This publication is copyright. No part may be reproduced by any process except in accordance with the provisions of the Copyright Act and for the purposes of Section 32 of the Sale of Land Act 1962 or pursuant to a written agreement. The information is only valid at the time and in the form obtained from the LANDATA® System. The State of Victoria accepts no responsibility for any subsequent release, publication or reproduction of the information.

PLAN OF SUBDIVISION SHEET 1 of 2  
OF PART OF CROWN PORTIONS 42 & 43  
— AT — RICHMOND —  
**PARISH OF JIKA JIKA**  
COUNTY OF BOURKE

**LP 13552**  
EDITION 10  
PLAN MAY BE LODGED 23-9-1931  
**COLOUR CODE**  
BL=BLUE  
CH=GREEN  
R1 & R2=BROWN  
P=PURPLE  
Y=YELLOW  
H=HATCH  
CH=CROSS HATCH

VOL. 5755 FOL. 841

**Measurements are in Feet & Inches**

Conversion Factor

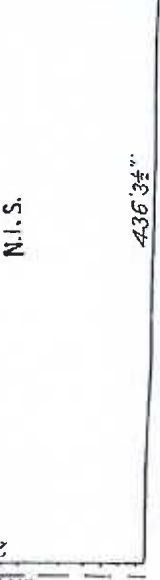
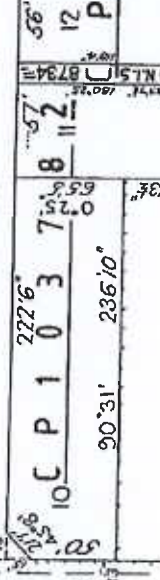
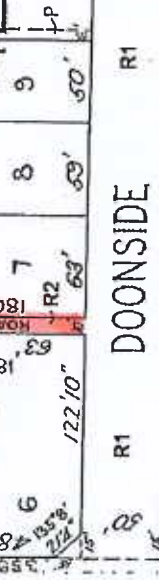
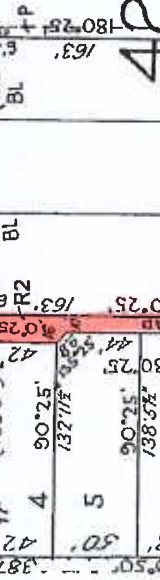
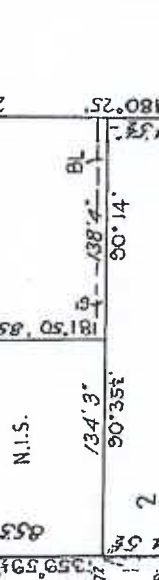
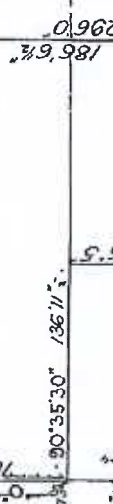
FEET X 0.3048 = METRES

**APPURTENANCES**  
THE LAND HATCHED GREEN OVER  
BROWN IS APPURTENANT TO PART  
ONLY OF THE LAND IN SUBDIVISION

**NOTATIONS**  
LOTS 21 & 22 ARE OMITTED

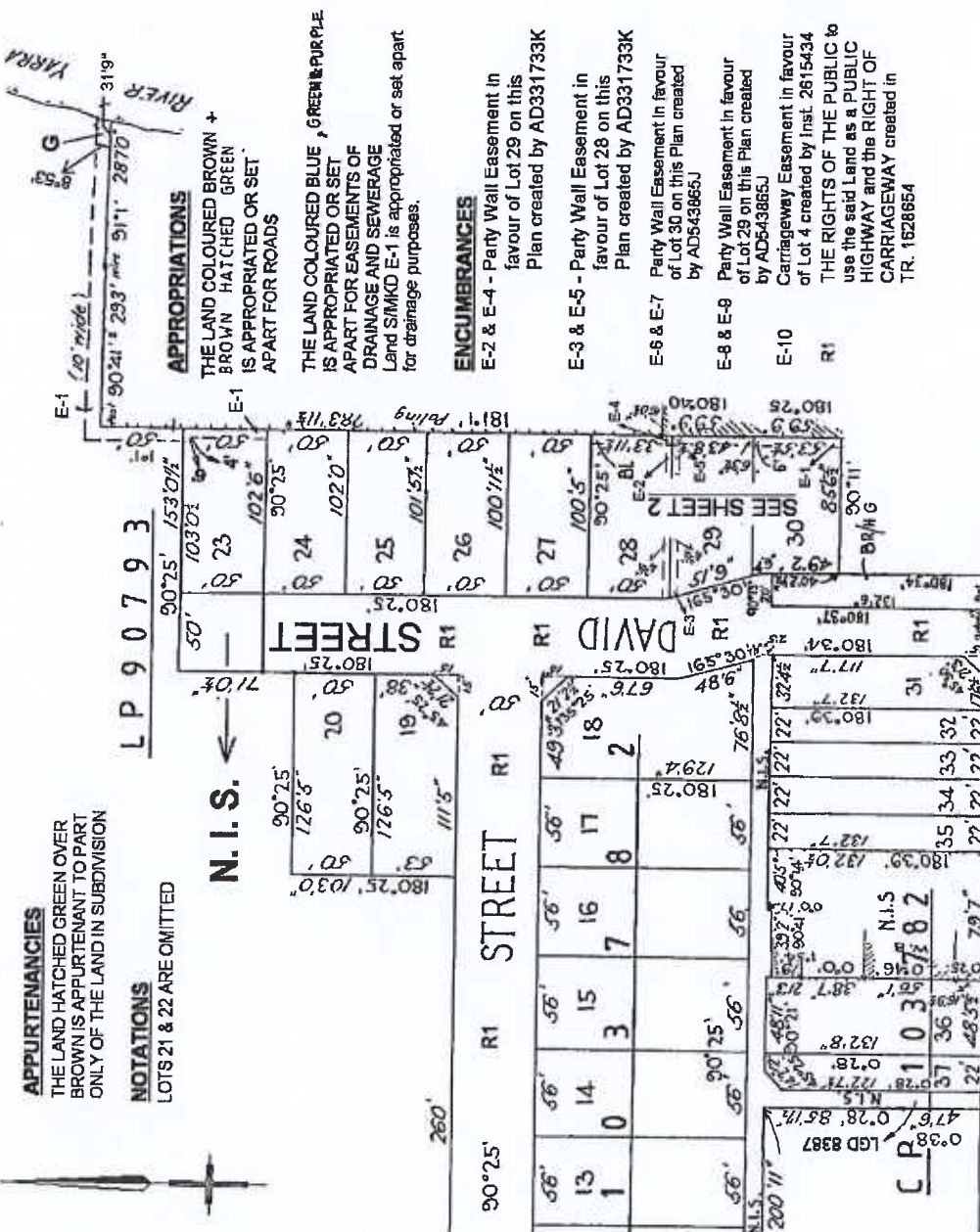
N.I.S.

LP 9 0 7 9 3



STREET DOONSIDE BURNLEY STREET

STREET



**APPROPRIATIONS**  
THE LAND COLOURED BROWN +  
BROWN HATCHED GREEN  
IS APPROPRIATED OR SET  
APART FOR ROADS

THE LAND COLOURED BLUE + GREEN & PURPLE  
IS APPROPRIATED OR SET  
APART FOR EASEMENTS OF  
DRAINAGE AND SEWERAGE  
Land SIMKO E-1 is appropriated or set apart  
for drainage purposes.

**ENCUMBRANCES**  
E-2 & E-4 - Party Wall Easement in  
favour of Lot 29 on this  
Plan created by AD331733K  
E-3 & E-5 - Party Wall Easement in  
favour of Lot 28 on this  
Plan created by AD331733K  
E-6 & E-7 - Party Wall Easement in favour  
of Lot 30 on this Plan created  
by AD543865J  
E-8 & E-9 - Party Wall Easement in favour  
of Lot 29 on this Plan created  
by AD543865J  
E-10 - Carriageway Easement in favour  
of Lot 4 created by Inst. 2615434  
THE RIGHTS OF THE PUBLIC to  
use the said Land as a PUBLIC  
HIGHWAY and the RIGHT OF  
CARRIAGEWAY created in  
TR. 1628654