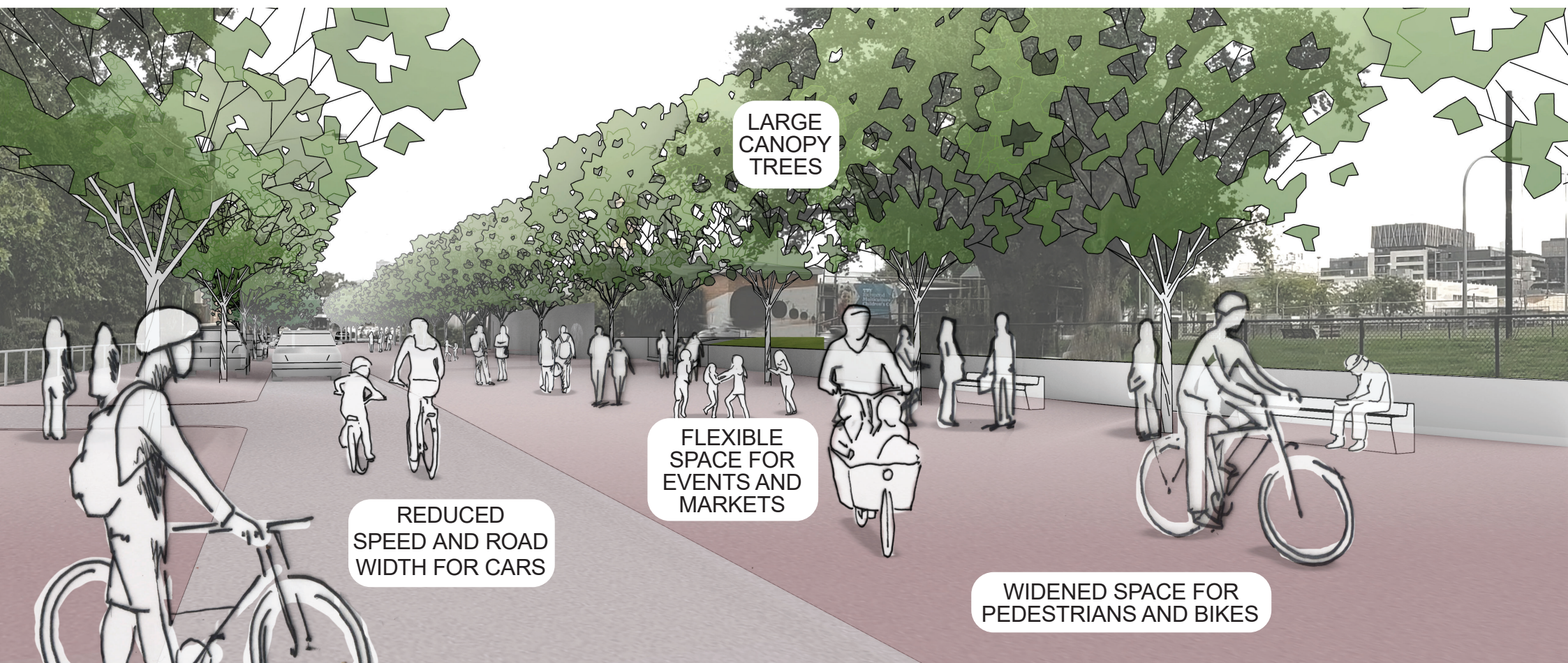


ATTACHMENT 2 - GLEADELL STREET - DESIGN IDEA 01



GLEADELL STREET DESIGN IDEA 01 - VIEW TOWARDS BRIDGE ROAD - ARTIST IMPRESSION
Emergent Studios 2020

This option proposes a major streetscape transformation into a pedestrian and bicycle friendly, tree lined public space. A space will have a flexible layout with level surface, allowing for markets, events and temporary activation.

In this option, the key outcomes include:

- Priority for pedestrians and bicycles, reduced space for cars.
- Shared zone for pedestrians and bicycles, improved safety.
- One way vehicle traffic north to south between Highett and Neuma Church car park.
- Two way vehicle traffic from Bridge Road to Neuma Church car park, allowing for emergency and property access.
- Universal Design principles will be used in the design, ensuring people with different mobilities skills can access and move along the street freely.
- East / West laneway does not allow for through traffic.
- Decrease in parking spaces. Only parallel parking spaces (including drop-off/pick-up, DDA parking and loading zones).
- Extensive street tree planting utilising 'structural cells' to maximise canopy cover and address climate change.
- High quality surface materials, level surface across the street.
- Major infrastructure upgrades including lighting and the undergrounding of power.

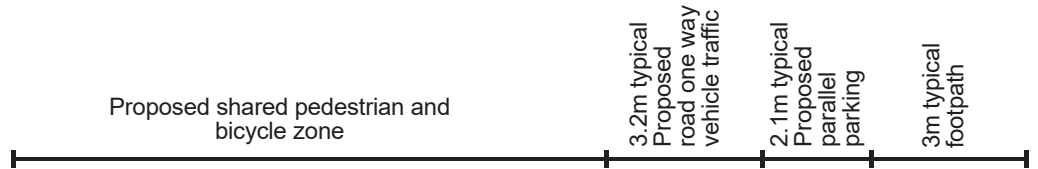
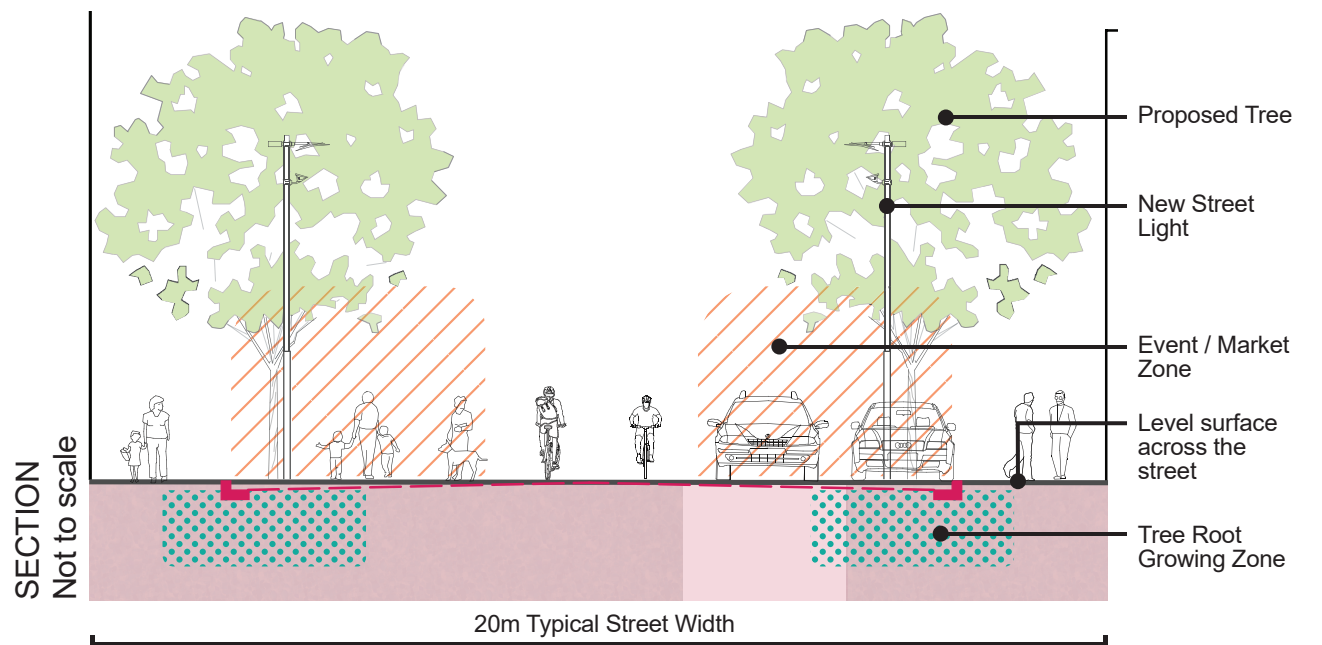
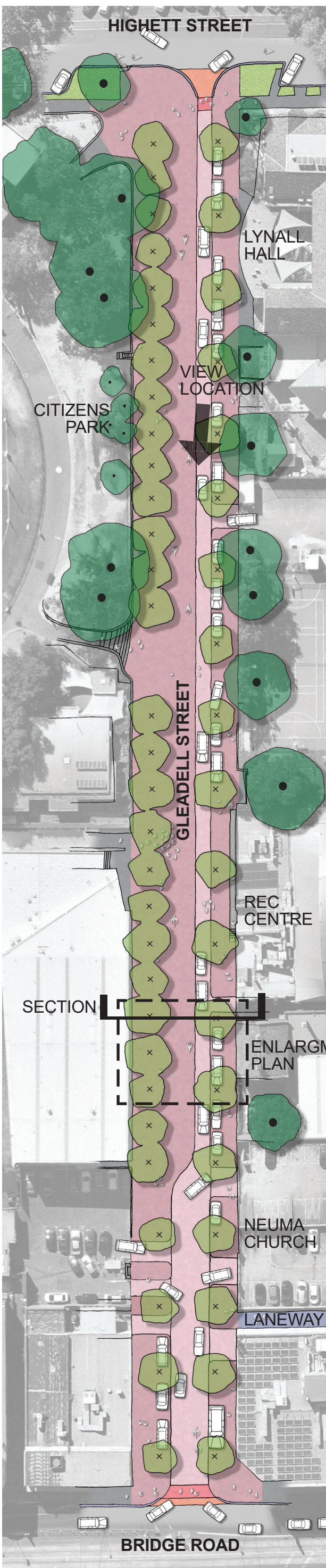


EXISTING VIEW TOWARDS BRIDGE ROAD
Emergent Studios 2020

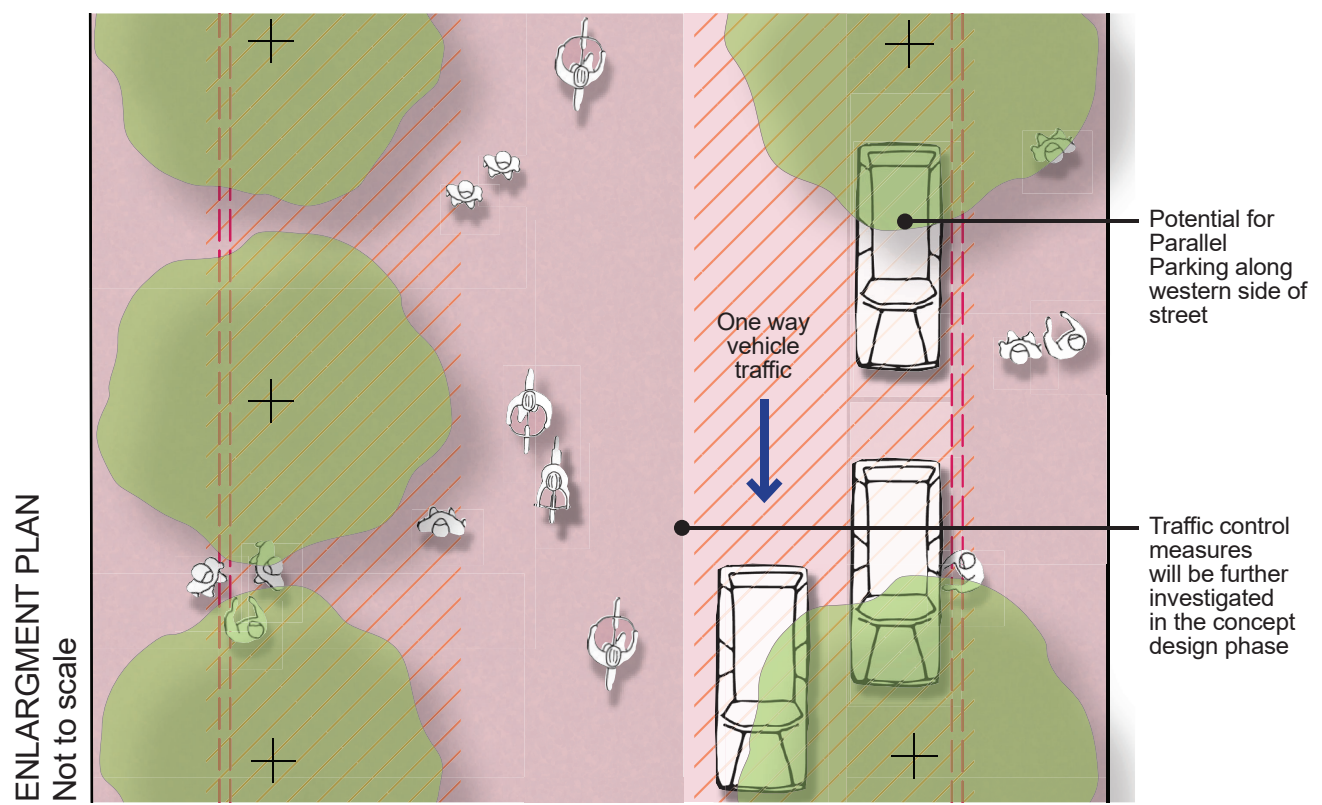
KEY ATTRIBUTES

IMPROVED AMENITIES FOR PEDESTRIANS		VERY HIGH
IMPROVED AMENITIES FOR BICYCLE USERS		VERY HIGH
IMPROVED STREETScape CHARACTER AND TREE CANOPY COVER		VERY HIGH
LEVEL OF CHANGE Rating based on estimated impacts to pedestrian and bicycle safety / movement / access, new trees and greenery and vehicle movements in the precinct.		VERY HIGH
COST IMPLICATIONS Cost estimate is indicative only. Costing include items such as major upgrades to drainage, services and undergrounding of power, high quality paving materials, furniture and new street lighting. Investment in growing media and 'structural cells' to maximise tree growth and canopy cover.		VERY HIGH \$9.5 MILLION ESTIMATE
CAR PARKING Indicative overall number. Proposed car parking spaces prioritised for disabled users, short term stay, pick up / drop off and loading zones. 2 hour parking prioritised along Griffith Street.	PROPOSED 20 EXISTING 110 	TRADE OFF -90

ATTACHMENT 2 - GLEADELL STREET - DESIGN IDEA 01



14.5m Typical existing road width including parking bays



LEGEND

- EXISTING TREE
- PROPOSED STREET TREE
Species to be confirmed
- PROPOSED FOOTPATH / PEDESTRIAN ZONE
Upgraded and/or extended zone
- PROPOSED VEHICLE ZONE/ROAD, PARKING,
DRIVEWAY AND VEHICLE CROSSOVER
- PROPOSED PEDESTRIAN PRIORITY
CROSSING
- EXISTING ROAD
- EXISTING FOOTPATH / PEDESTRIAN ZONE
- EAST WEST LANEWAY
- PROPOSED LANDSCAPED OUTSTAND/NATURESTRIP
Planting, lawn or other treatment to be confirmed
- ZONE WITH OPPORTUNITY FOR EVENTS,
MARKET AND TEMPORARY ACTIVATION
- TREE ROOT GROWING ZONE
Sub-surface zone for tree growing media and 'structural
cells' to maximise tree growth and canopy cover
- EXISTING CONDITIONS
Indicative alignment of existing kerbs

DISCLAIMER

- Colours are only for descriptive purposes only and do not represent actual materials or colours.
- Views, plans and sections are illustrative only, describing a high level idea for potential changes to the functions of the street.
- Design details including but not limited to items such as; traffic turning circles, parking bays, drainage/WSUD opportunities, paving materials, street furniture, landscaping and will be further investigated in the concept design phase.

IDEA PLAN NOT TO SCALE

(Aerial base nearmaps.com)