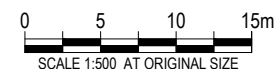





1. ALL DIMENSIONS ARE TO FACE OF KERB UNLESS NOTED OTHERWISE
2. ALL SIGNS AND PAVEMENT MARKING TO BE PLACED IN ACCORDANCE WITH AUSTRALIAN, AUSTRROADS AND VICROADS STANDARDS
3. DDA IN ACCORDANCE WITH AS 1428.4
4. THESE DRAWINGS ARE TO BE READ IN CONJUNCTION WITH SIGNAL DRAWINGS



 REDUNDANT LINEMARKING TO BE REMOVED
 PROPOSED PAVEMENT MARKINGS (WHITE)
 PROPOSED PAVEMENT MARKING (YELLOW)

YELLOW CONTINUOUS TRAM WAY LINE — 100mm WIDE CONTINUOUS YELLOW LINE SET 150MM FROM FACE OF SEPARATION KERB TO CENTRELINE OF 100MM WIDE LINE

LANE LINE 3m 9m — — — — 100mm WIDE WHITE LINE

CONTINUITY LINE 1m 3m — — — — WHITE RRPMS @ 12m CTS

100mm WIDE WHITE LINE

FOR CONSTRUCTION

ARGOT		1	27.11.18	SINGLE LANE NORTH BOUND		T.N	T.N		T.N
ARGOT		0	17.01.17	ISSUED FOR CONSTRUCTION		C.L	T.N		T.N
Revised By	In Serv	Rev.	Date	Description	Designed	Checked	Ind. Rev.	Approv.	
<REDRAWN & REVISED. SUPERSEDES DRAWING No.					REV. DATED / /				



This drawing is provided only for the information of the person or organisation to whom Victrack provides it. It must not be provided to, or used by, any other person without Victrack's prior written consent.

Datum	MGA 755
-------	---------

Scale	1:500	Sheet Size
-------	-------	------------

CD

072

SP4-C-072

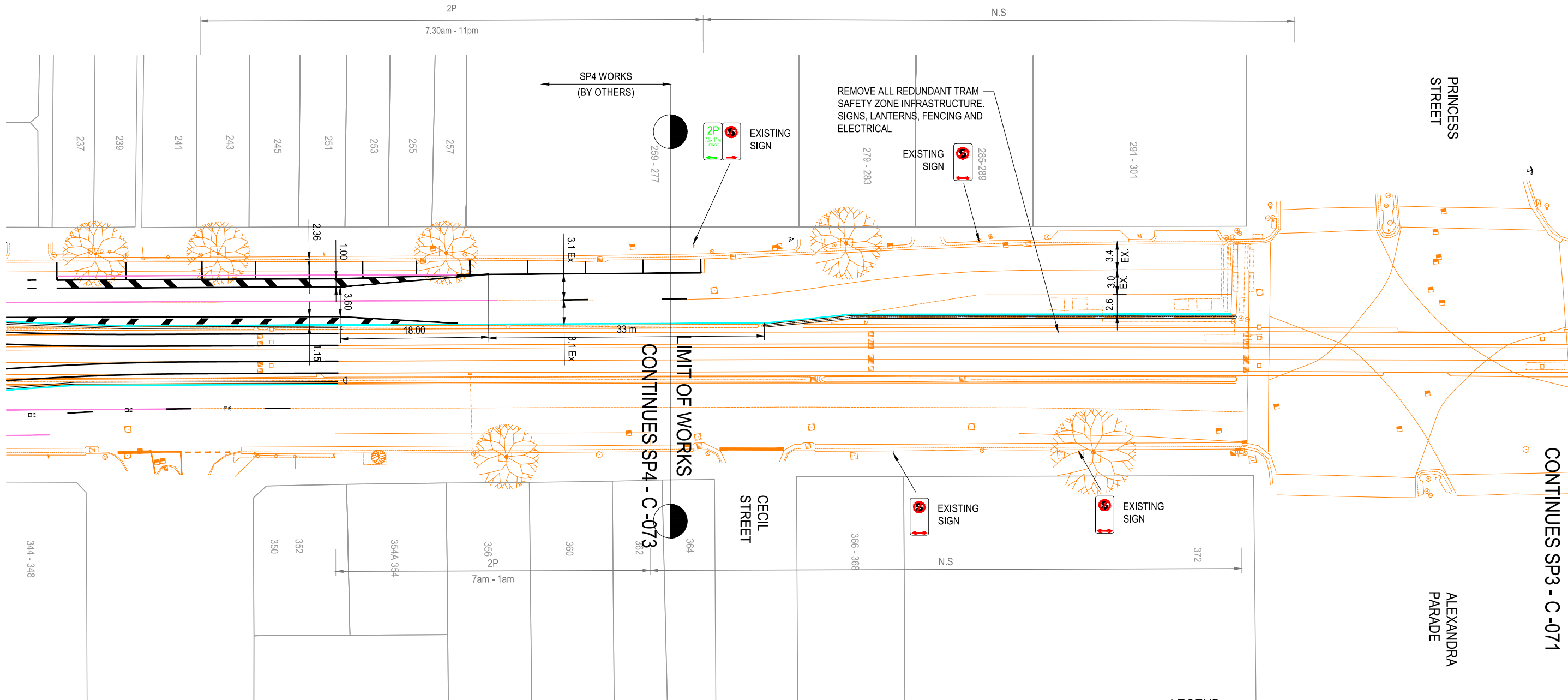
Revision
1

(DATE)

(SIGNATURE)

(BLOCK LETTERS)

Certified By:



CONTINUED ON SHEET 2

CONTINUES SP3 - C-071

LEGEND

- REDUNDANT LINEMARKING TO BE REMOVED
- PROPOSED PAVEMENT MARKINGS (WHITE)
- PROPOSED PAVEMENT MARKING (YELLOW)

YELLOW CONTINUOUS TRAM WAY LINE 100mm WIDE CONTINUOUS YELLOW LINE SET 150MM FROM FACE OF SEPERATION KERB TO CENTRELINE OF 100MM WIDE LINE

LANE LINE 3m 9m LINE GAP 100mm WIDE WHITE LINE
CONTINUITY LINE 1m 3m LINE GAP WHITE RRPMS @ 12m CTS
100mm WIDE WHITE LINE

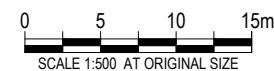
FOR CONSTRUCTION



WARNING
ALL SERVICES SHOWN ON THIS DRAWING ARE APPROXIMATE ONLY AND EXACT LOCATION IS TO BE CONFIRMED ON SITE BY CONTRACTOR PRIOR TO COMMENCEMENT OF ANY WORKS.

NOTES:

- ALL DIMENSIONS ARE TO FACE OF KERB UNLESS NOTED OTHERWISE
- ALL SIGNS AND PAVEMENT MARKING TO BE PLACED IN ACCORDANCE WITH AUSTRALIAN, AUSTROADS AND VICROADS STANDARDS
- DDA IN ACCORDANCE WITH AS 1428.4
- THESE DRAWINGS ARE TO BE READ IN CONJUNCTION WITH SIGNAL DRAWINGS



ARGOT		1	27.11.18	SINGLE LANE NORTH BOUND	T.N	T.N		T.N	
ARGOT		0	16.01.17	ISSUED FOR CONSTRUCTION	C.L	T.N		T.N	
Revised By	In Serv	Rev.	Date	Description	Designed	Checked	Ind. Rev.	Approv.	
<REDRAWN & REVISED. SUPERSEDES DRAWING No. REV. DATED / /									

Consultant	ARGOT CONSULTANTS
Franchisee / Lessee	yarra trams

This drawing has been prepared by, or compiled from information provided by, persons other than Victrack. To the maximum extent permissible by law, Victrack takes no responsibility for, and makes no representations in relation to, the completeness, accuracy or quality of any information contained in this drawing. Each user of this drawing releases Victrack from all and any loss, damage, cost, expense or liability in relation to the use of, or any reliance on, this drawing or the information contained in it.

All written dimensions take precedence over scaled dimensions.

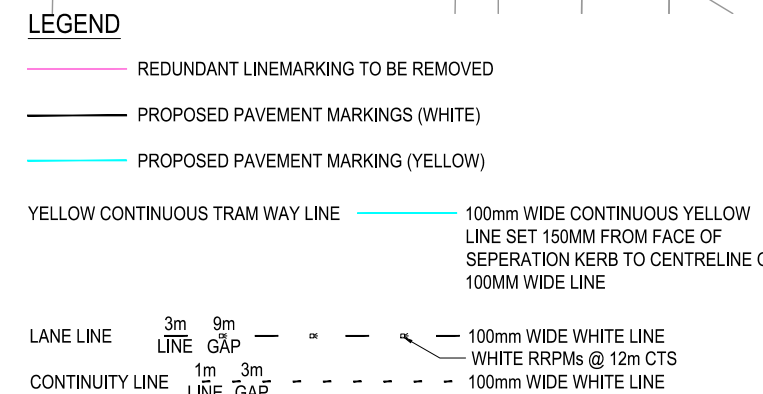
This drawing is provided only for the information of the person or organisation to whom Victrack provides it. It may not be provided to, or used by, any other person without Victrack's prior written consent.

TRAM INFRASTRUCTURE NICHOLSON STREET CECIL ST TO BROOKS CRES SIGNAGE AND LINEMARKING SHEET 1		
Up Location East. North. ID#	Down Location East. North. ID#	Datum MGA Z55

VicTrack ACCESS		Drawn By C.LAGANA	Designed By C.LAGANA
File Name SP3-C-070.dwg		Checked By T.NIAKOLAS	Ind. Review
Sheet No. 01 of 01		Approved T.NIAKOLAS	Approval Date
In Serv.		Drawing Number SP3-C-070	Revision 1
Scale 1:500	Sheet Size A3		

Certified By:

CONTINUES SP3 - C -070



WARNING
ALL SERVICES SHOWN ON THIS DRAWING ARE
APPROXIMATE ONLY AND EXACT LOCATION IS
TO BE CONFIRMED ON SITE BY CONTRACTOR
PRIOR TO COMMENCEMENT OF ANY WORKS.

1. ALL DIMENSIONS ARE TO FACE OF KERB UNLESS NOTED OTHERWISE
2. ALL SIGNS AND PAVEMENT MARKING TO BE PLACED IN ACCORDANCE WITH AUSTRALIAN, AUSTROADS AND VICROADS STANDARDS
3. DDA IN ACCORDANCE WITH AS 1428.4
4. THESE DRAWINGS ARE TO BE READ IN CONJUNCTION WITH SIGNAL DRAWINGS

FOR CONSTRUCTION

[illegible]

Certified By:

(DATE)

(SIGNATURE)

(BLOCK LETTERS)

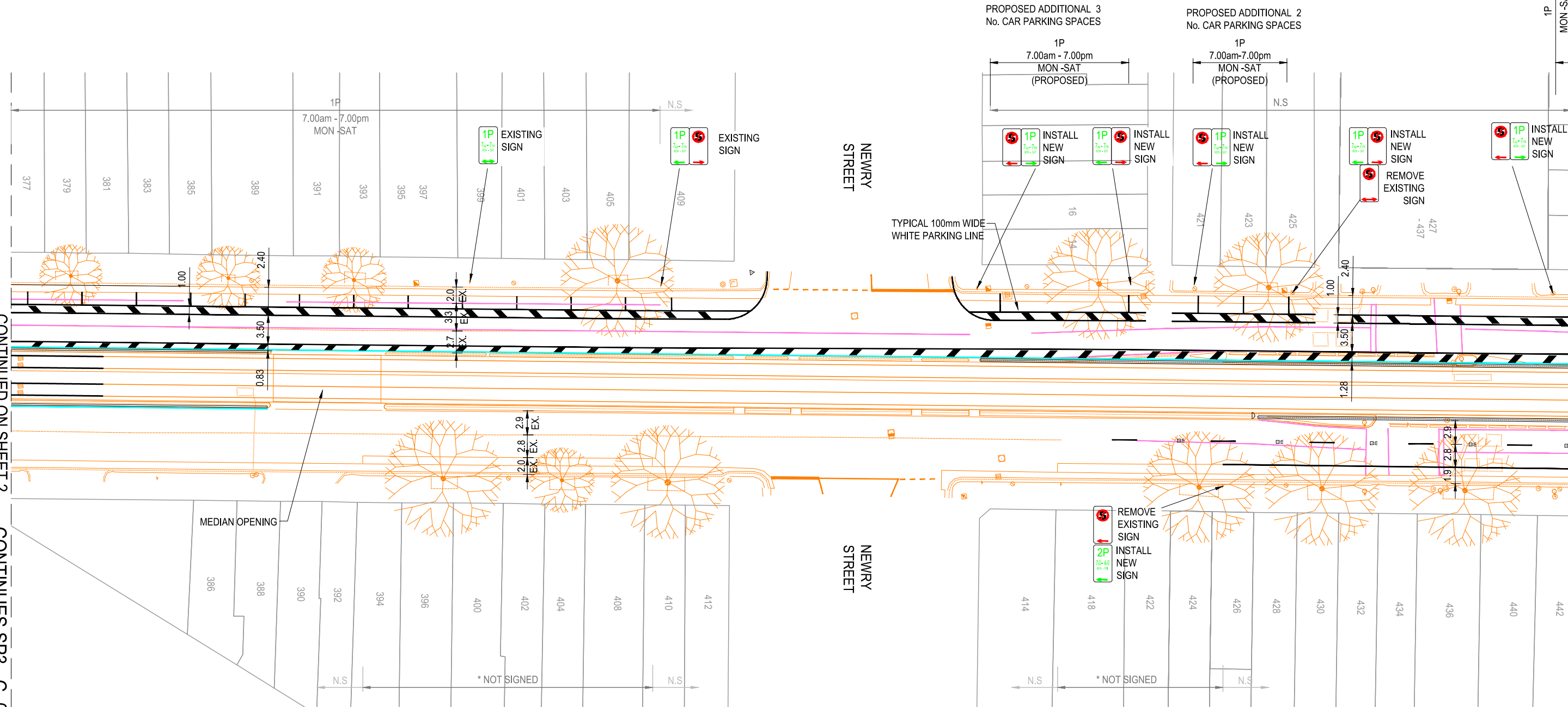
CONTINUED ON SHEET 2

CONTINUES SP3 - C-071

CONTINUED ON SHEET 4

CONTINUES SP3 - C-073

(PROPOSED)
MON-SAT
REFER NEXT SHEET



LEGEND

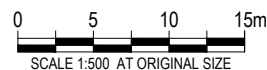
- REDUNDANT LINEMARKING TO BE REMOVED
- PROPOSED PAVEMENT MARKINGS (WHITE)
- PROPOSED PAVEMENT MARKING (YELLOW)
- YELLOW CONTINUOUS TRAM WAY LINE
- 100mm WIDE CONTINUOUS YELLOW LINE SET 150MM FROM FACE OF SEPERATION KERB TO CENTRELINE OF 100MM WIDE LINE
- 100mm WIDE WHITE LINE
- WHITE RRPMS @ 12m CTS
- 100mm WIDE WHITE LINE

NOTES:

- ALL DIMENSIONS ARE TO FACE OF KERB UNLESS NOTED OTHERWISE
- ALL SIGNS AND PAVEMENT MARKING TO BE PLACED IN ACCORDANCE WITH AUSTRALIAN, AUSTROADS AND VICROADS STANDARDS
- DDA IN ACCORDANCE WITH AS 1428.4
- THESE DRAWINGS ARE TO BE READ IN CONJUNCTION WITH SIGNAL DRAWINGS



WARNING
ALL SERVICES SHOWN ON THIS DRAWING ARE APPROXIMATE ONLY AND EXACT LOCATION IS TO BE CONFIRMED ON SITE BY CONTRACTOR PRIOR TO COMMENCEMENT OF ANY WORKS.



FOR CONSTRUCTION

ARGOT		1	27.11.18	SINGLE LANE NORTH BOUND	T.N	T.N		T.N	
ARGOT		0	16.01.17	ISSUED FOR CONSTRUCTION	C.L	T.N		T.N	
Revised By	In Serv	Rev.	Date	Description	Designed	Checked	Ind. Rev.	Approv.	
<REDRAWN & REVISED. SUPERSEDES DRAWING No. REV. DATED / /									

Consultant

ARGOT
CONSULTANTS

Franchisee / Lessee

yarra trams

This drawing has been prepared by, or compiled from information provided by, persons other than VicTrack. To the maximum extent permissible by law, VicTrack takes no responsibility for, and makes no representations in relation to, the completeness, accuracy or quality of any information contained in this drawing. Each user of this drawing releases VicTrack from all and any loss, damage, cost, expense or liability in relation to the use of, or any reliance on, this drawing or the information contained in it.

All written dimensions take precedence over scaled dimensions.

This drawing is provided only for the information of the person or organisation to whom VicTrack provides it. It may not be provided to, or used by, any other person without VicTrack's prior written consent.

TRAM INFRASTRUCTURE
NICHOLSON STREET
CECIL ST TO BROOKS CRES
SIGNAGE AND LINEMARKING
SHEET 3

Up Location East. North. ID#	Down Location East. North. ID#	Datum MGA Z55
---------------------------------------	---	------------------

VicTrack
ACCESS

File Name		SP3-C-072.dwg	
Sheet No.		01 of 01	
In Serv.			
Scale		Sheet Size	
1:500		A	

Drawn By C.LAGANA	Designed By C.LAGANA
Checked By T.NIAKOLAS	Ind. Review
Approved T.NIAKOLAS	Approval Date
Drawing Number SP3-C-072	Revision 1

PROPOSED ADDITIONAL 2 No.
CAR PARKING SPACES

1 CAR PARKING SPACE
TO BE REMOVED

3 CAR PARKING SPACE
TO BE REMOVED

CURTAIN
STREET

FENWICK STREET

CHURCH
STREET

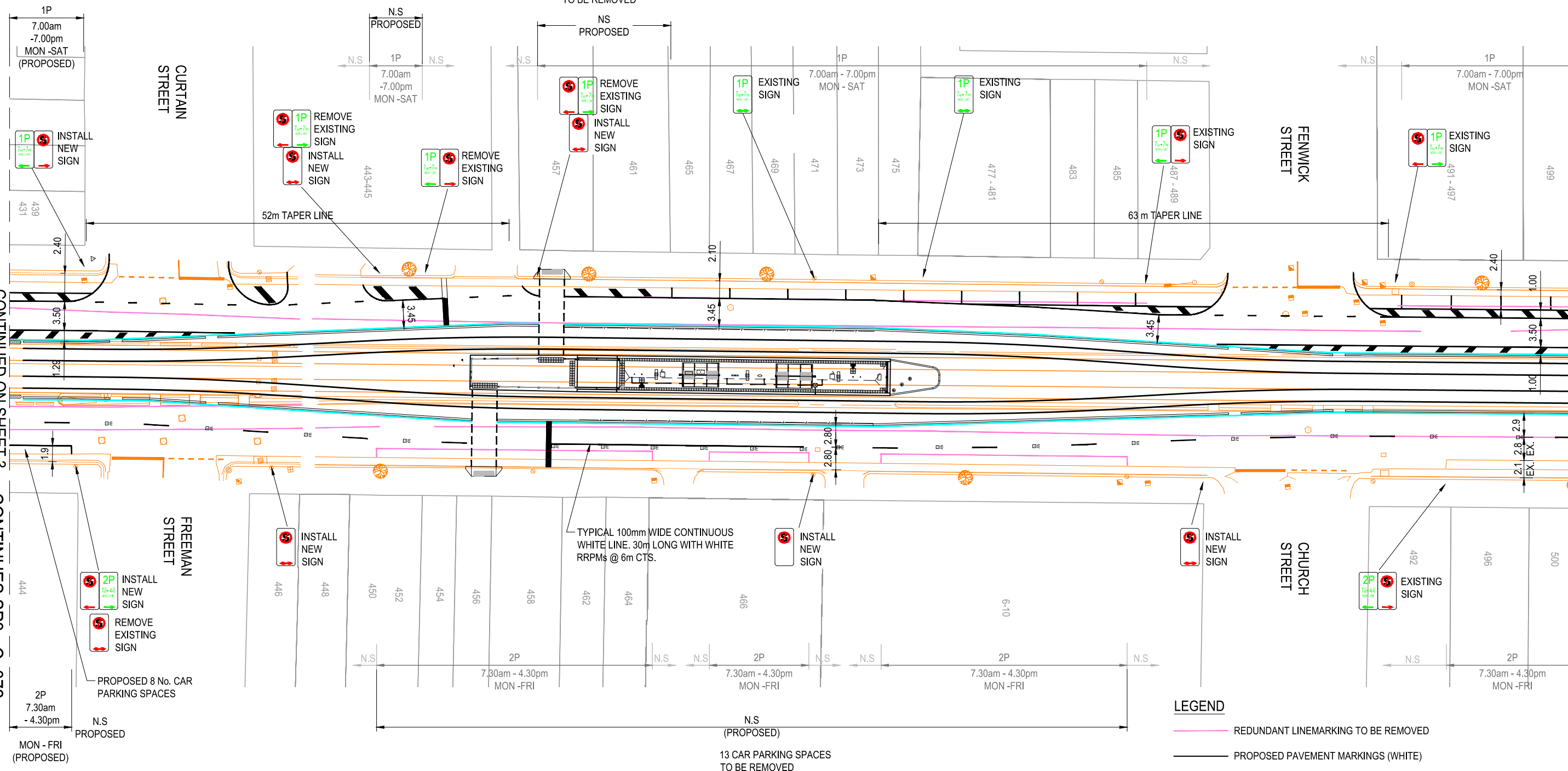
FREEMAN
STREET

CONTINUED ON SHEET 3

CONTINUES SP3 - C-072

CONTINUED ON SHEET 5

CONTINUES SP3 - C-0/4



NOTES:

1. ALL DIMENSIONS ARE TO FACE OF KERB UNLESS NOTED OTHERWISE
2. ALL SIGNS AND PAVEMENT MARKING TO BE PLACED IN ACCORDANCE WITH AUSTRALIAN, AUSTROADS AND VICROADS STANDARDS
3. DDA IN ACCORDANCE WITH AS 1428.4
4. THESE DRAWINGS ARE TO BE READ IN CONJUNCTION WITH SIGNAL DRAWINGS



WARNING
ALL SERVICES SHOWN ON THIS DRAWING ARE APPROXIMATE ONLY AND EXACT LOCATION IS TO BE CONFIRMED ON SITE BY CONTRACTOR PRIOR TO COMMENCEMENT OF ANY WORKS.

ARGOT		1	27.11.18	SINGLE LANE NORTH BOUND		T.N	T.N		T.N
ARGOT		0	16.01.17	ISSUED FOR CONSTRUCTION		C.L	T.N		T.N
Revised By	In Serv	Rev.	Date	Description	Designed	Checked	Ind. Rev.	Approv.	
<REDRAWN & REVISED. SUPERSEDES DRAWING No. REV. DATED / /									

Consultant	
------------	--



Franchisee / Lessee



This drawing has been prepared by, or compiled from information provided by, persons other than Victrack. To the maximum extent permissible by law, Victrack takes no responsibility for, and makes no representations in relation to, the completeness, accuracy or quality of any information contained in this drawing. Each user of this drawing releases Victrack from all and any loss, damage, cost, expense or liability in relation to the use of, or any reliance on, this drawing or the information contained in it.

All written dimensions take precedence over scaled dimensions.

This drawing is provided only for the information of the person or organisation to whom Victrack provides it. It is not to be provided to, or used by, any other person without Victrack's prior written consent.

TRAM INFRASTRUCTURE
NICHOLSON STREET
CECIL ST TO BROOKS CRES
SIGNAGE AND LINEMARKING
SHEET 4

Up Location East. North. ID#	Down Location East. North. ID#	Datum MGA Z55
---------------------------------------	---	----------------------

Down Location	
East.	
North.	
ID#	

Datum	MGA Z55
-------	---------



File Name

Sheet No. 01 of 01

In Serv

Scale 1:500

Sheet Size A3

Drawn By	
----------	--

C.LAG

Checked By:

T.NIAK

T NIAK

Drawing Number
SP3-C-073

By

AGAI

ew

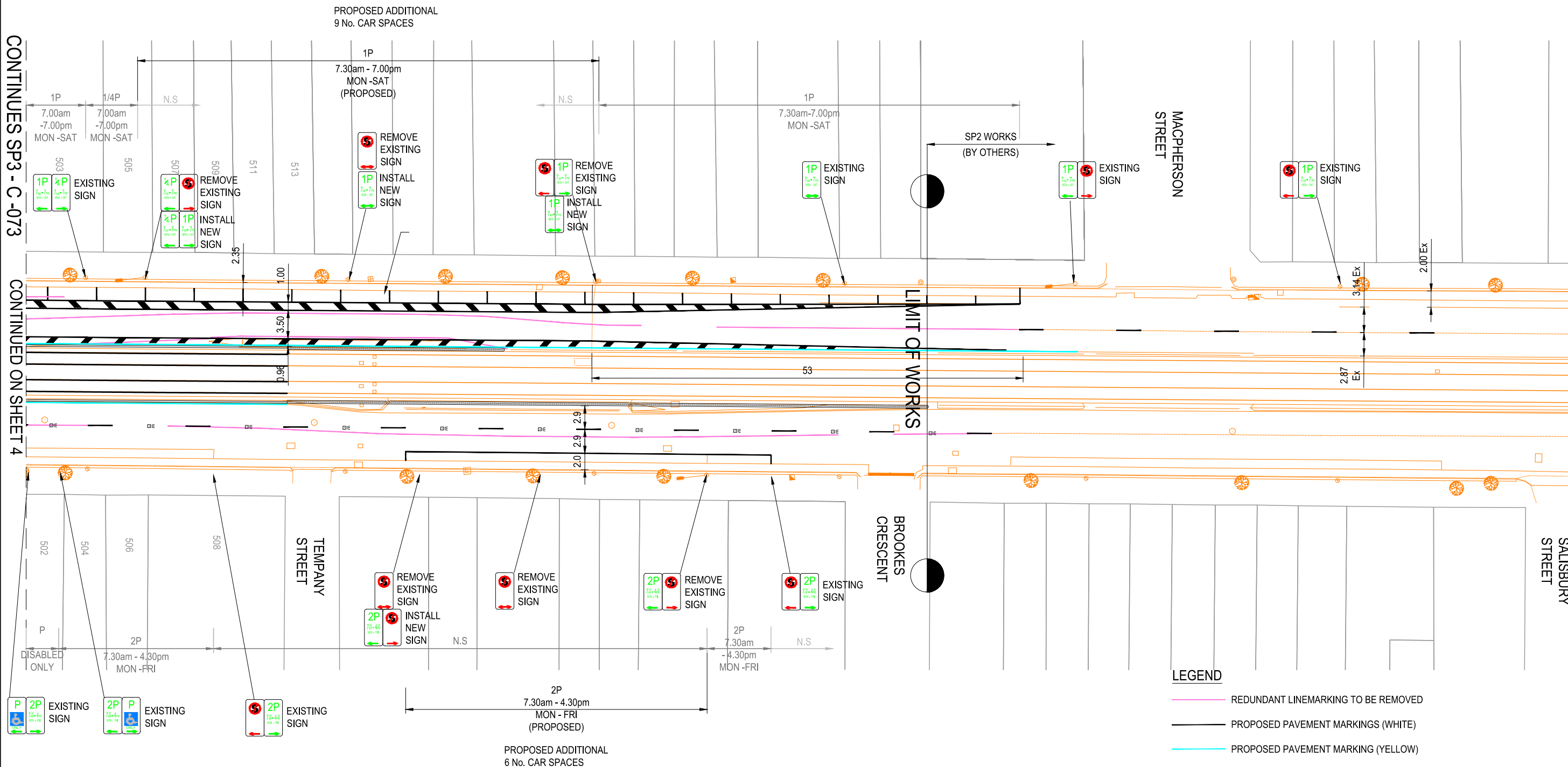
Date

	R
--	---



FOR CONSTRUCTION

CONTINUES SP3 - C-073

CONTINUED ON SHEET 4



LEGEND

- REDUNDANT LINEMARKING TO BE REMOVED
 PROPOSED PAVEMENT MARKINGS (WHITE)
 PROPOSED PAVEMENT MARKING (YELLOW)

YELLOW CONTINUOUS TRAM WAY LINE — 100mm WIDE CONTINUOUS YELLOW LINE SET 150MM FROM FACE OF SEPERATION KERB TO CENTRELINE OF 100MM WIDE LINE

LANE LINE	3m LINE	9m GAP	—	α	—	α	—	100mm WIDE WHITE LINE
								WHITE RRPMS @ 12m CTS
CONTINUITY LINE	1m LINE	3m GAP	—	—	—	—	—	100mm WIDE WHITE LINE

FOR CONSTRUCTION



WARNING
ALL SERVICES SHOWN ON THIS DRAWING ARE APPROXIMATE ONLY AND EXACT LOCATION IS TO BE CONFIRMED ON SITE BY CONTRACTOR PRIOR TO COMMENCEMENT OF ANY WORKS.

NOTES:

1. ALL DIMENSIONS ARE TO FACE OF KERB UNLESS NOTED OTHERWISE
2. ALL SIGNS AND PAVEMENT MARKING TO BE PLACED IN ACCORDANCE WITH AUSTRALIAN, AUSTROADS AND VICROADS STANDARDS
3. DDA IN ACCORDANCE WITH AS 1428.4
4. THESE DRAWINGS ARE TO BE READ IN CONJUNCTION WITH SIGNAL DRAWINGS

ARGOT		1	27.11.18	SINGLE LANE NORTH BOUND		T.N	T.N		T.N
ARGOT		0	16.01.17	ISSUED FOR CONSTRUCTION		C.L	T.N		T.N
Revised By	In Serv	Rev.	Date	Description	Designed	Checked	Ind. Rev.	Approv.	
<REDRAWN & REVISED. SUPERSEDES DRAWING No. REV. DATED / /									

Consultant	
------------	--



Franchisee / Lessee



This drawing has been prepared by, or compiled from information provided by, persons other than Victrack. To the maximum extent permissible by law, Victrack takes no responsibility for, and makes no representations in relation to, the completeness, accuracy or quality of any information contained in this drawing. Each user of this drawing releases Victrack from all and any loss, damage, cost, expense or liability in relation to the use of, or any reliance on, this drawing or the information contained in it.

This drawing is provided only for the information of the person or organisation to whom Victrack provides it. It is not to be provided to, or used by, any other person without Victrack's prior written consent.

TRAM INFRASTRUCTURE
NICHOLSON STREET
CECIL ST TO BROOKS CRES
SIGNAGE AND LINEMARKING
SHEET 5

Up Location	
East.	
North.	
ID#	

Down Location	
East.	
North.	
ID#	

Datum	MGA Z55
-------	---------



File Name	SP3-C-074.dwg
-----------	---------------

Sheet No. 01 of 01

	01 of 01
In Serv	

Scale	1:500	Sheet Size	A
-------	-------	------------	---

Drawn By	
----------	--

C.LAGANA

Checked By	
------------	--

T.NIAKOLA

Approved
T.NIAKOLA

Drawing Number	
----------------	--

SP3-C-074

Designed By	
-------------	--

C.LAGANA

Ind. Review	
-------------	--

Approval Date	
---------------	--

Drawing Number	
----------------	--

Revision

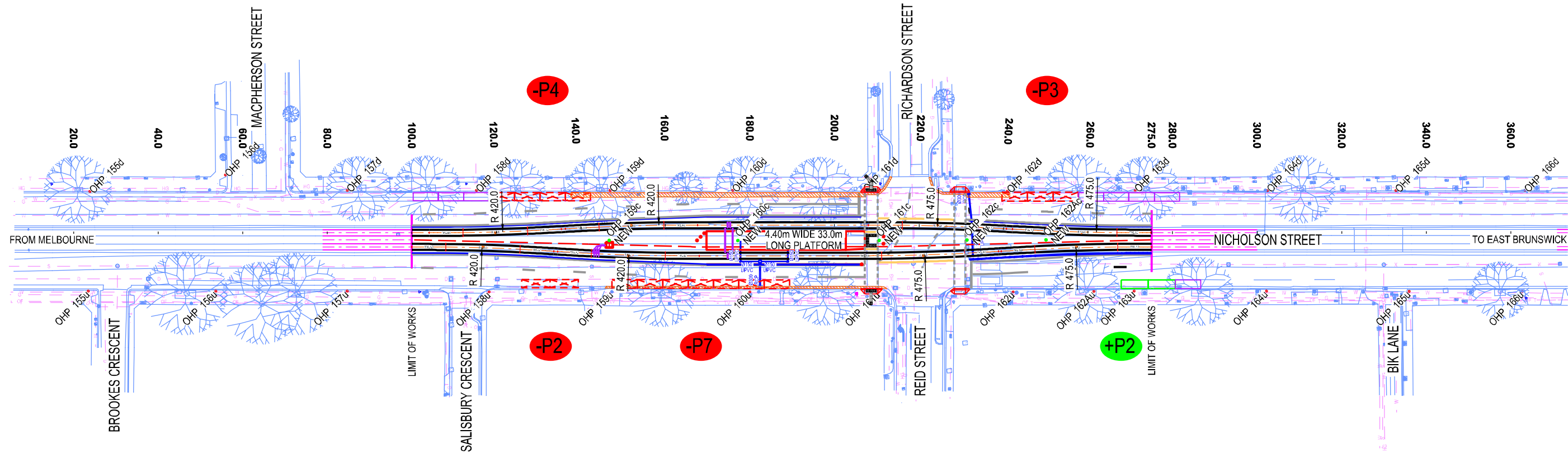
1

(DATE)

(SIGNATURE)

(BLOCK LETTERS)

Certified By:



LEGEND:

- TANGENT POINT, TP
- TRANSITION POINT
- PAVEMENT RESHEET
- CAR PARKING SPACE TO BE REMOVED
- EXISTING CAR PARKING SPACE
- NEW CAR PARKING SPACE
- NEW OVERHEAD POLE
- EAB - ENERGY ABSORBING BOLLARD

PARKING

TOTAL STREET PARKING SPACE LOSS: 16 No.
TOTAL NEW STREET PARKING SPACES: 2 No.

-P16
+P2

WARNING
UNDERGROUND SERVICES
DIAL BEFORE YOU DIG
JOB NO: 11060554
DATE: 05/08/2016
THE LOCATION OF UNDERGROUND SERVICES ARE APPROXIMATE ONLY
AND THEIR EXACT POSITION SHOULD BE PROVEN ON SITE.
NO GUARANTEE IS GIVEN THAT ALL EXISTING SERVICES ARE SHOWN

ISSUED FOR TENDER

1:1000 10 0 10 20 30 40 50m

3:52:56 PM

18/12/2018

Revised By	In Serv	Rev.	Date	Description	Designed	Checked	Ind. Rev.	Approv.
JACOBS		T2	18/12/18	STAKEHOLDER COMMENTS INCORPORATED	T.M.	M.F.		D.M.P.
JACOBS		T1	31/05/18	ISSUED FOR TENDER	T.M.	M.F.		D.M.P.
JACOBS		P3	19/01/17	DRAFT DETAILED DESIGN	T.R.	M.F.		D.M.P.
JACOBS		P2	08/12/16	FINAL FUNCTIONAL DESIGN	T.R.	M.F.		D.M.P.
JACOBS		P1	17/10/16	DRAFT FUNCTIONAL DESIGN	T.R.	M.F.		D.M.P.

Consultant
JACOBS
L11, 452 Flinders St, Melbourne Victoria 3000 AUSTRALIA
Telephone: (+61) 03 8668 3000 Web: www.jacobs.com

Franchisee / Lessee
yarra trams

This drawing has been prepared by, or compiled from information provided by, persons other than PTV. To the maximum extent permissible by law, PTV takes no responsibility for, and makes no representations in relation to, the completeness, accuracy or quality of any information contained in this drawing. Each user of this drawing releases PTV from all and any loss, damage, cost, expense or liability in relation to the use of, or any reliance on, this drawing or the information contained in it.

All written dimensions take precedence over scaled dimensions.

This drawing is provided only for the information of the person or organisation to whom PTV provides it. It may not be provided to, or used by, any other person without PTV's prior written consent.

TRAM INFRASTRUCTURE NICHOLSON STREET STOP 20 - REID STREET GENERAL ARRANGEMENT		
Up Location East. 321850.43 North. 5815885.34 ID#	Down Location East. 321896.08 North. 5816249.63 ID#	Datum MGA Z55

PUBLIC TRANSPORT VICTORIA PTV	
File Name IS168200-LP-DRG-0105.dgn	
Sheet No. 01 of 01	
In Serv.	
Scale 1:1000	Sheet Size A3

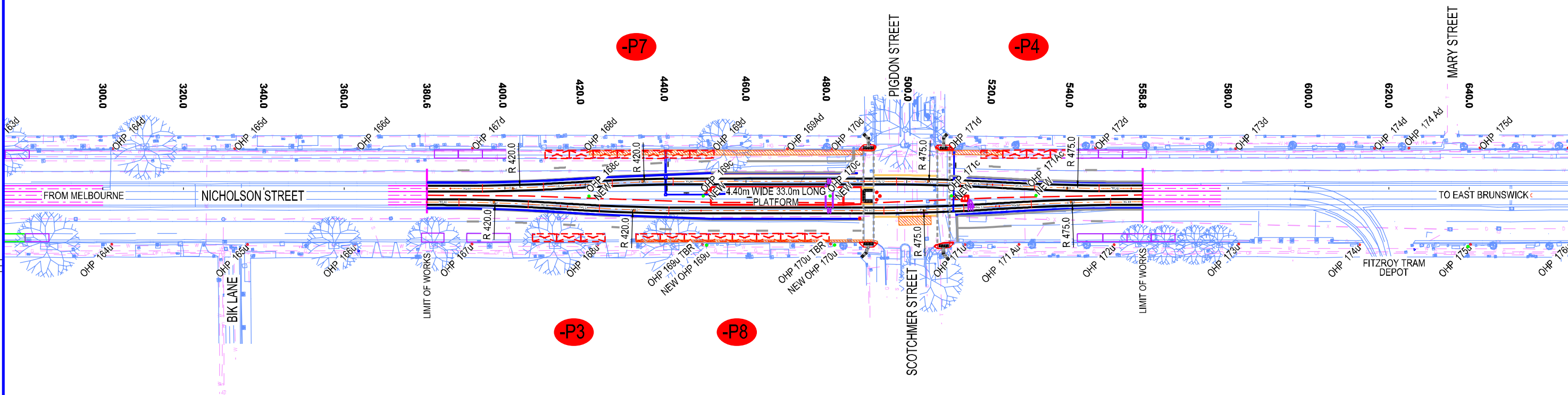
Project Drawing Number: IS168200-LP-DRG-0105	
Drawn By T REDENBACH	Designed By T REDENBACH
Checked By M FORD	Ind. Review
Approved D PATTERSON	Approval Date
Drawing Number	Revision T2

(DATE)

(SIGNATURE)

(BLOCK LETTERS)

Certified By:



LEGEND:

- TANGENT POINT, TP
- TRANSITION POINT
- PAVEMENT RESHEET
- CAR PARKING SPACE TO BE REMOVED
- EXISTING CAR PARKING SPACE
- NEW CAR PARKING SPACE
- NEW OVERHEAD POLE
- EAB - ENERGY ABSORBING BOLLARD

PARKING

TOTAL STREET PARKING SPACE LOSS: 22 No.

-P22

WARNING
UNDERGROUND SERVICES
DIAL BEFORE YOU DIG
JOB NO: 11060554
DATE: 05/08/2016
THE LOCATION OF UNDERGROUND SERVICES ARE APPROXIMATE ONLY
AND THEIR EXACT POSITION SHOULD BE PROVEN ON SITE.
NO GUARANTEE IS GIVEN THAT ALL EXISTING SERVICES ARE SHOWN

ISSUED FOR TENDER

1:1000 10 0 10 20 30 40 50m

4:01:45 PM
18/12/2018

Revised By	In Serv	Rev.	Date	Description	Designed	Checked	Ind. Rev.	Approv.
JACOBS		T2	18/12/18	INCORPORATED	T.M.	M.F.		D.M.P.
JACOBS		T1	31/05/18	ISSUED FOR TENDER	T.M.	M.F.		D.M.P.
JACOBS		P3	19/01/17	DRAFT DETAILED DESIGN	T.R.	M.F.		D.M.P.
JACOBS		P2	08/12/16	FINAL FUNCTIONAL DESIGN	T.R.	M.F.		D.M.P.
JACOBS		P1	17/10/16	DRAFT FUNCTIONAL DESIGN	T.R.	M.F.		D.M.P.

Consultant
JACOBS
L11, 452 Flinders St, Melbourne Victoria 3000 AUSTRALIA
Telephone: (+61) 03 8668 3000 Web: www.jacobs.com

Franchisee / Lessee
yarra trams

This drawing has been prepared by, or compiled from information provided by, persons other than PTV. To the maximum extent permissible by law, PTV takes no responsibility for, and makes no representations in relation to, the completeness, accuracy or quality of any information contained in this drawing. Each user of this drawing releases PTV from all and any loss, damage, cost, expense or liability in relation to the use of, or any reliance on, this drawing or the information contained in it.

All written dimensions take precedence over scaled dimensions.

This drawing is provided only for the information of the person or organisation to whom PTV provides it. It may not be provided to, or used by, any other person without PTV's prior written consent.

TRAM INFRASTRUCTURE
NICHOLSON STREET
STOP 21 - SCOTCHMER STREET
GENERAL ARRANGEMENT

Up Location	Down Location	Datum
East. 321885.27	East. 321930.98	MGA Z55
North. 5816163.03	North. 5816529.24	
ID#	ID#	

PUBLIC TRANSPORT VICTORIA **PTV**

File Name IS168200-LP-DRG-0106.dgn

Sheet No. 01 of 01

In Serv.

Scale 1:1000 Sheet Size A3

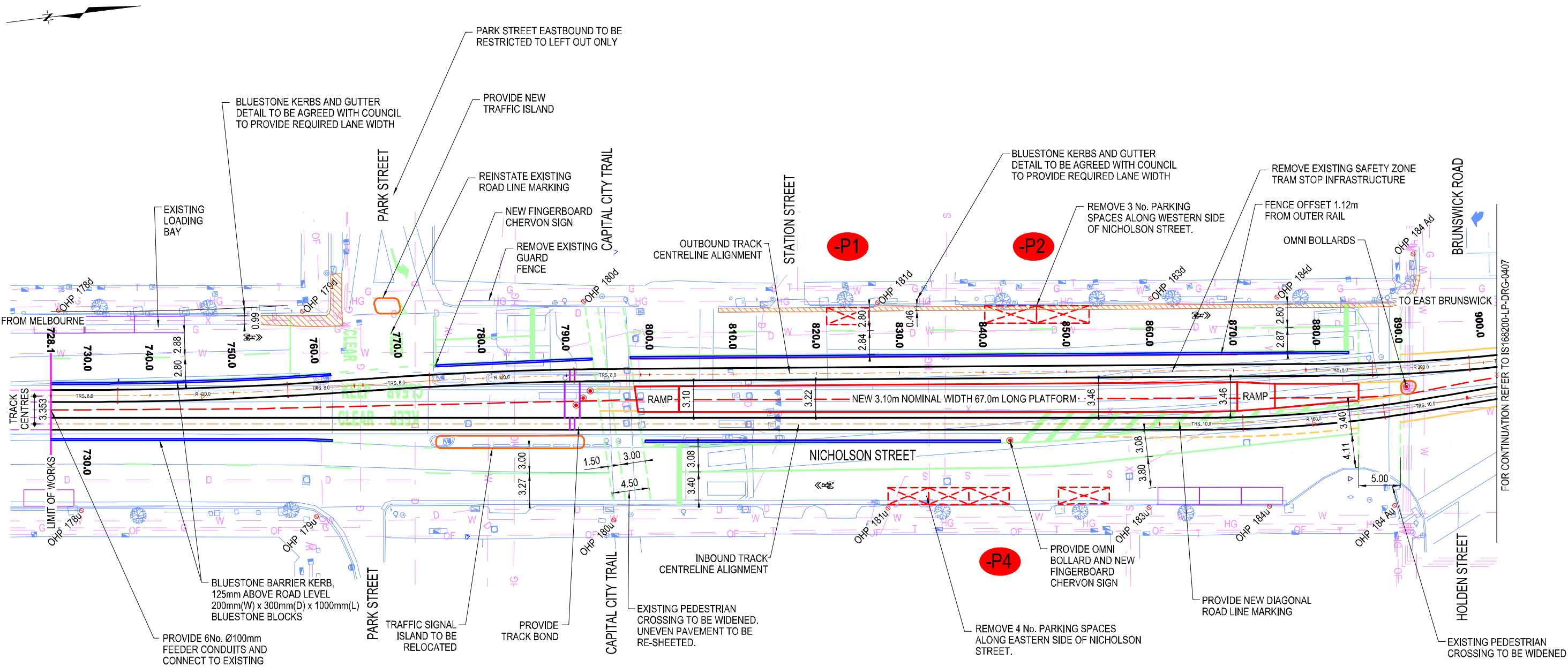
Project Drawing Number: IS168200-LP-DRG-0106	
Drawn By T REDENBACH	Designed By T REDENBACH
Checked By M FORD	Ind. Review
Approved D PATTERSON	Approval Date
Drawing Number	Revision T2

(DATE)

(SIGNATURE)

(BLOCK LETTERS)

Certified By:



NOTES:

- ALL MEASUREMENTS ARE IN METRES UNLESS OTHERWISE SPECIFIED
- TRACK GAUGE 1.435m. R157A RAIL TO BE USED.
TRACK CENTRES: 3.353m
- TRACK STRUCTURE TO STANDARD DRAWING STD_T9010 REV D -
TYPE 2: ASPHALT ON CRUSHED ROCK ON CONCRETE TRACK SLAB
TYPE 3: FULL DEPTH ASPHALT ON CONCRETE TRACK SLAB THROUGH INTERSECTION
- BLUESTONE KERBING TO TIE INTO EXISTING CONCRETE KERB AT LIMIT OF WORKS

LEGEND:

- TANGENT POINT, TP
- TRANSITION POINT
- PAVEMENT RESHEET
- CAR PARKING TO BE REMOVED
- EXISTING CAR PARKING SPACE

PARKING

TOTAL STREET PARKING SPACE LOSS: 7 No.

WARNING
UNDERGROUND SERVICES
DIAL BEFORE YOU DIG
JOB NO: 11060554
DATE: 05/08/2016
THE LOCATION OF UNDERGROUND SERVICES ARE APPROXIMATE ONLY
AND THEIR EXACT POSITION SHOULD BE PROVEN ON SITE.
NO GUARANTEE IS GIVEN THAT ALL EXISTING SERVICES ARE SHOWN

PRELIMINARY



4:09:47 PM

12/12/2016

JACOBS		P2	08/12/16	FINAL FUNCTIONAL DESIGN	T.R.	M.F.		D.M.P.
JACOBS		P1	17/10/16	DRAFT FUNCTIONAL DESIGN	T.R.	M.F.		D.M.P.
Revised By	In Serv	Rev.	Date	Description	Designed	Checked	Ind. Rev.	Approv.

Consultant

JACOBS

L11, 452 Flinders St, Melbourne Victoria 3000 AUSTRALIA
Telephone: (+61) 03 8668 3000 Web: www.jacobs.com

Franchisee / Lessee

yarra trams

This drawing has been prepared by, or compiled from information provided by, persons other than PTV. To the maximum extent permissible by law, PTV takes no responsibility for, and makes no representations in relation to, the completeness, accuracy or quality of any information contained in this drawing. Each user of this drawing releases PTV from all and any loss, damage, cost, expense or liability in relation to the use of, or any reliance on, this drawing or the information contained in it.

All written dimensions take precedence over scaled dimensions.

This drawing is provided only for the information of the person or organisation to whom PTV provides it. It may not be provided to, or used by, any other person without PTV's prior written consent.

TRAM INFRASTRUCTURE
NICHOLSON STREET
STOP 22 - HOLDEN STREET
TRAM WORKS
SHEET 1 OF 2

Up Location	Down Location	Datum
East. 321939.34 North. 5816596.77 ID#	East. 321957.20 North. 5816774.34 ID#	MGA Z55

PUBLIC TRANSPORT VICTORIA

PT

File Name IS168200-LP-DRG-0406.dgn

Sheet No. 01 of 01

In Serv.

Scale 1:500

Sheet Size A3

Project Drawing Number: IS168200-LP-DRG-0406	
Drawn By T REDENBACH	Designed By T REDENBACH
Checked By M FORD	Ind. Review
Approved D PATTERSON	Approval Date
Drawing Number	Revision P2