

## TITLE PLAN

EDITION 1

TP

## Location of Land

Parish: JIKA JIKA

Township: -

Section: -

Crown Allotment: -

Crown Portion: 3 (PART)

Title Reference : VOL.2422 FOL.238

Last Plan Reference: Lot 1 on TP938653J

## Notations

DEPTH LIMITATION DOES NOT APPLY

## Easement Information

LEGEND A - Appurtenant Easement E - Encumbering Easement R - Encumbering Easement (Road)

Easement Reference	Purpose	Width (Metres)	Origin	Land Benefited/In Favour of
--------------------	---------	----------------	--------	-----------------------------

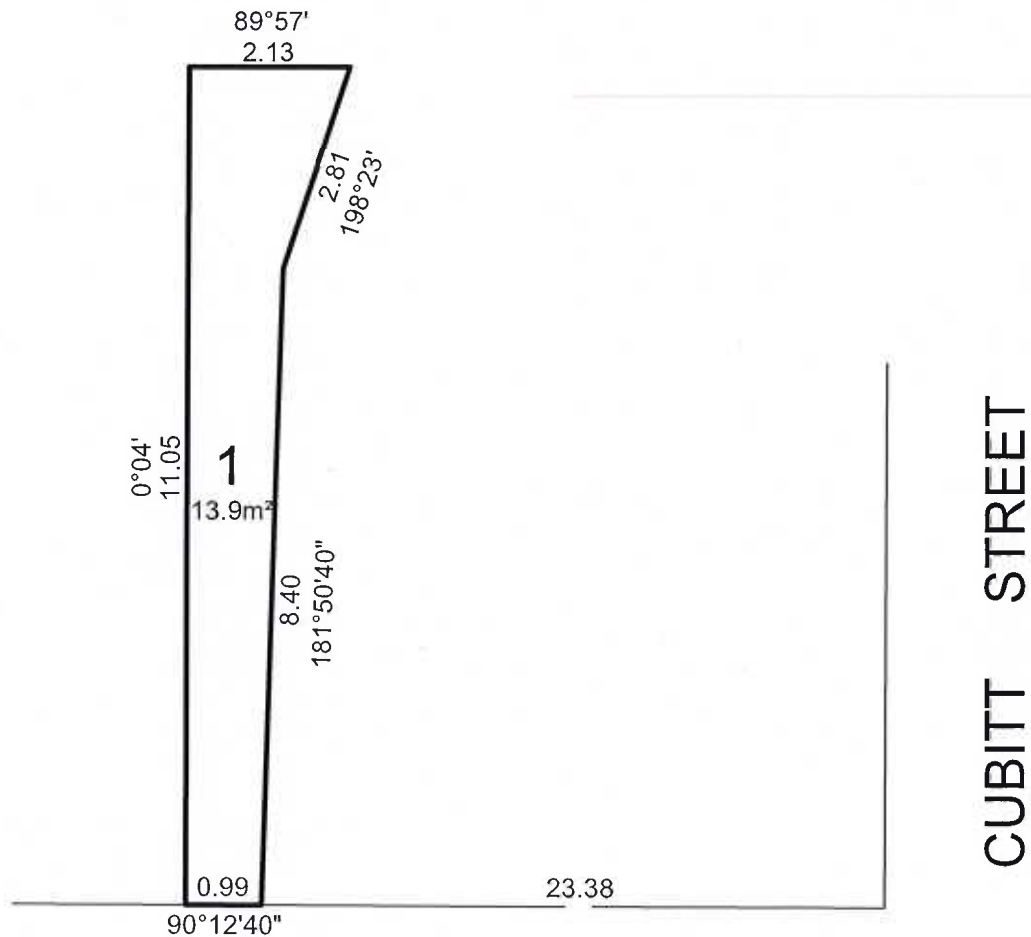
THIS PLAN HAS BEEN PREPARED FOR THE LAND REGISTRY.

Checked by:

Assistant Registrar of Titles

Date

APPROX. TRUE NORTH



BALMAIN STREET

CUBITT STREET



PO Box 136, Lower Plenty 3083  
E: enquiries@dmlsurveys.com.au  
www.dmlsurveys.com.au  
M: 0433 741 385  
AND BY FAX FROM 039 339 339 FAX 039 339 339

ORIGINAL

SCALE	SHEET SIZE
1:100	A4

REF: 2018-167 TITLE PLAN