



City West Water™

1 November 2017

LISA ELEZOVIC
MADDOCKS
COLLINS SQUARE, TOWER TWO, LEVEL 25, 727 COLLINS STREET
MELBOURNE VIC 3008

City West Water Corporation
ABN: 70 066 902 467
1 McNab Avenue
Footscray Vic 3011 Australia
Locked Bag 350 Sunshine Vic 3020
DX 30311 Sunshine
citywestwater.com.au
Telephone (03) 9313 8422
Facsimile (03) 9313 8417

Dear Lisa,

Re: PROPOSED ROAD DISCONTINUANCE
Location: 359-361 PIGDON STREET, PRINCESS HILL
CWW Reference: 17/441

I refer to your email received by City West Water (CWW) regarding the proposed Road Discontinuance at the above location and request for comment from CWW. Enclosed for your information are copies of CWW's requirements for working in the vicinity of water and sewer assets and a plan of the general area.

As you will see on the plan provided, the parcel of land proposed for Discontinuance contains an existing CWW sewer main. It is with respect to this asset that CWW currently objects to this proposal subject to the following:

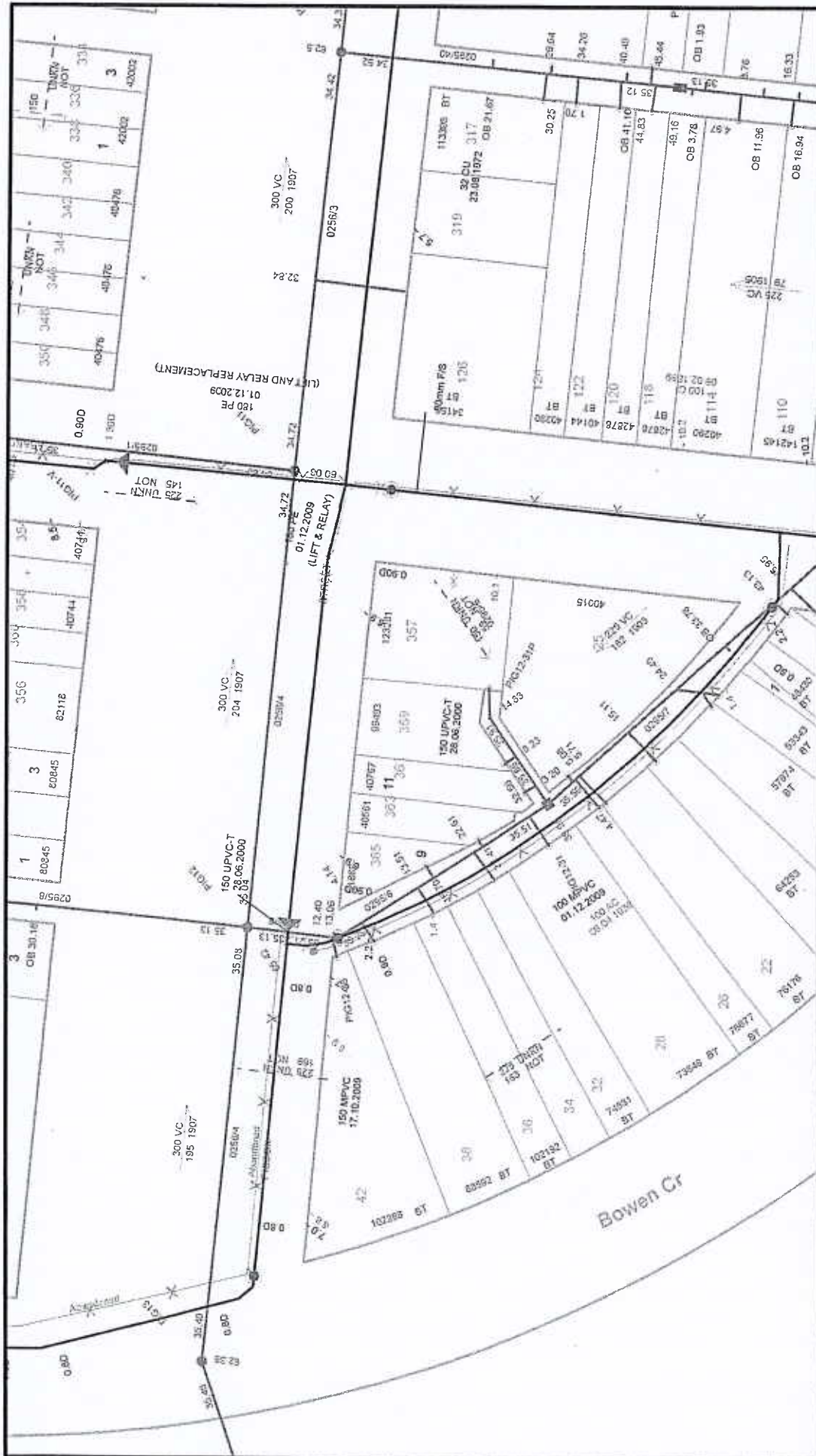
1. A certified Title Plan must show a 2.0m wide Sewerage Easement centrally located over the sewer main in favour of CWW pursuant to Section 12(1) of the Subdivision Act. This plan must then be referred to CWW for consideration prior to offering a withdrawal of objection.
2. Any proposed fences must be located a minimum distance of 800mm clear of the centreline of existing CWW sewer mains.
3. Any proposed fence lines must be located a minimum distance of 1.0m from sewer manholes and/or sewer inspection shafts.
4. Any proposal to build over CWW assets will require CWW's written consent (i.e. Build-Over Application approval).

Naturally, extreme care must be taken when working in the vicinity of CWW assets and CWW will seek cost recovery for any damage caused to its assets that can be attributed to your works.

If you have any questions, please do not hesitate to contact me on 0407 528 605.

Yours faithfully,

Mark Abraham
Technical Officer, Other Authorities Works



359-361 Pigdun Street
Princess Hill

City West Water

NOTES :

Scale: 1:750

Completed by: _____ Melway Reference: 29H11 Date: 1/11/2017

Assets labelled AC may contain asbestos material and therefore works on these assets must be undertaken in accordance with OHS Regulations 2007(Part 4.3).
Disclaimer: The location of assets must be proved in the field by the applicant prior to the commencement of work. These plans do not indicate private services. City West Water Corporation does not guarantee and makes no representation or warranty as to the accuracy or scale of this plan. This company accepts no liability for any loss, damage or injury by any person as a result of any inaccuracy in this plan.