

**TITLE PLAN**

**EDITION 1**

**TP**

**Location of Land**

Parish: JIKA JIKA AT CARLTON  
 Section: 127  
 Crown Allotment: 12 (PART) & 13 (PART)  
 Crown Portion: -  
 Last Plan Reference: Lot 1 & 2 on TP941253H

**Notations**

DEPTH LIMITATION DOES NOT APPLY

**Easement Information**

THIS PLAN HAS BEEN PREPARED FOR THE LAND REGISTRY.

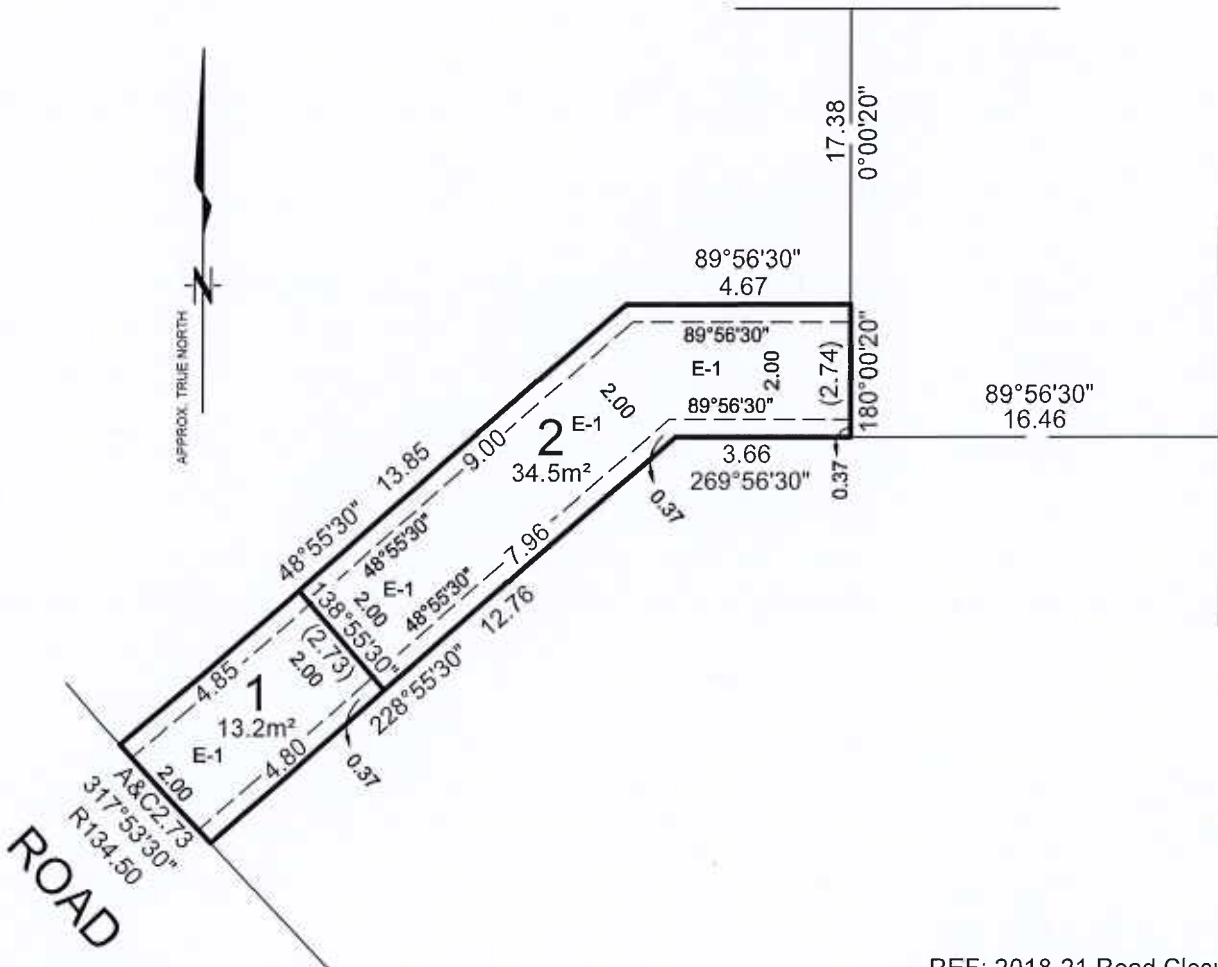
LEGEND A - Appurtenant Easement E - Encumbering Easement R - Encumbering Easement (Road)

| Easement Reference | Purpose  | Width (Metres) | Origin    | Land Benefited/In Favour of |
|--------------------|----------|----------------|-----------|-----------------------------|
| E-1                | SEWERAGE | SEE PLAN       | THIS PLAN | CITY WEST WATER CORP.       |

Checked by:  
  
 Assistant Registrar of Titles  
  
 Date

**PIGDON STREET**

**GARTON STREET**



REF: 2018-21 Road Closure

ORIGINAL  
 SCALE SHEET SIZE  
 1:150 A4

**DML LAND SURVEYS**

PO Box 336, Lower Plenty 3093  
 E: enquiries@dmlsurveys.com.au  
 www.dmlsurveys.com.au  
 A: 0422 743 305  
 03 93 100 420 030 420 420 420