

4.5 Campus Hub

The new buildings will create a new campus hub which will provide an attractive and active space, bringing the campus together.



Proposed Plan - Hub Diagram


4.6 Proposed Vehicle and Bicycle Parking

The removal of the Young Street Car Park and creation of new underground car parking will allow for more active frontages and an improved urban design outcome across the ACU campus and in the public realm.

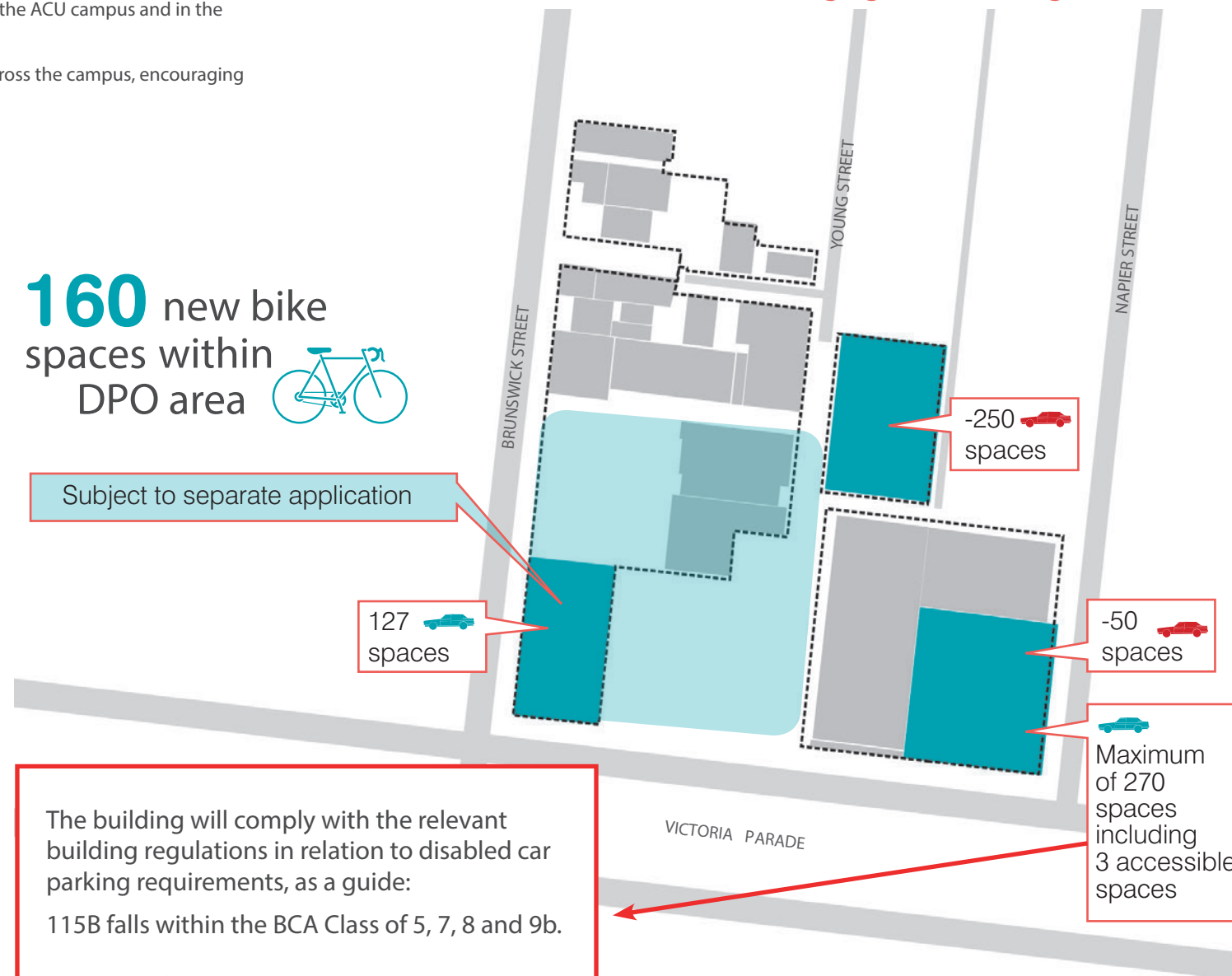
New bicycle facilities will be provided across the campus, encouraging students and staff to cycle.

160 new bike spaces within DPO area 

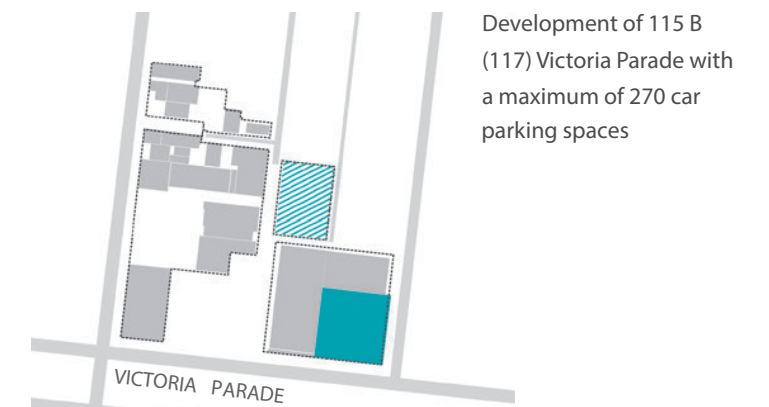
Subject to separate application

127  spaces

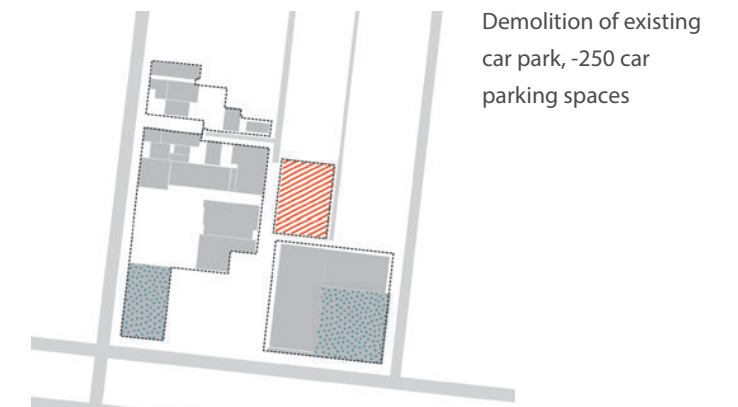
Staging of Car Parking



The building will comply with the relevant building regulations in relation to disabled car parking requirements, as a guide:
115B falls within the BCA Class of 5, 7, 8 and 9b.
NCC D3.5, for a Class 5, 7, 8 or 9b building requires 1 accessible carparking space for every 100 carparking spaces or part thereof as stipulated.
Therefore under the BCA a total of 3 accessible spaces is required. This is subject to future planning permit applications.



Development of 115 B (117) Victoria Parade with a maximum of 270 car parking spaces

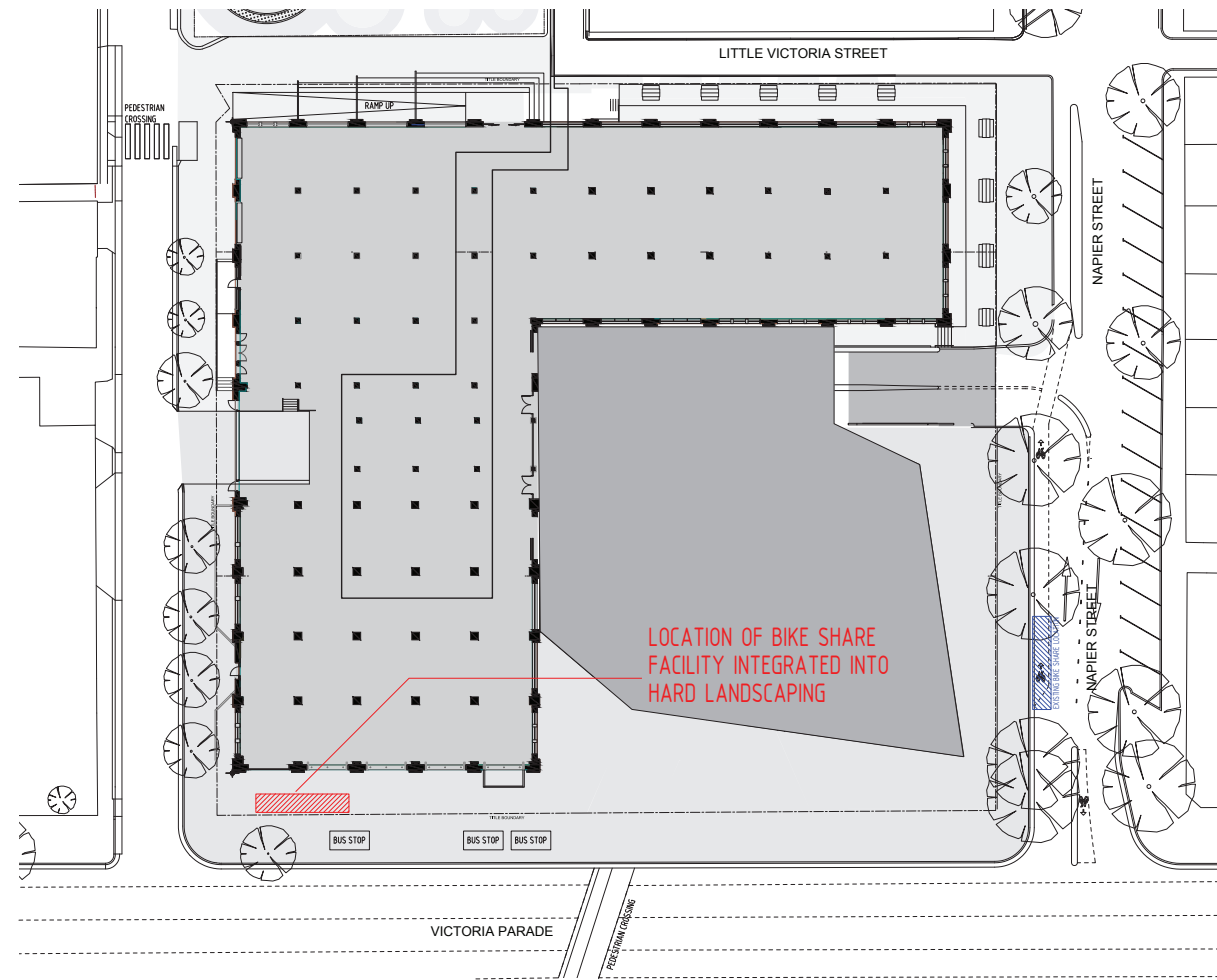


Demolition of existing car park, -250 car parking spaces

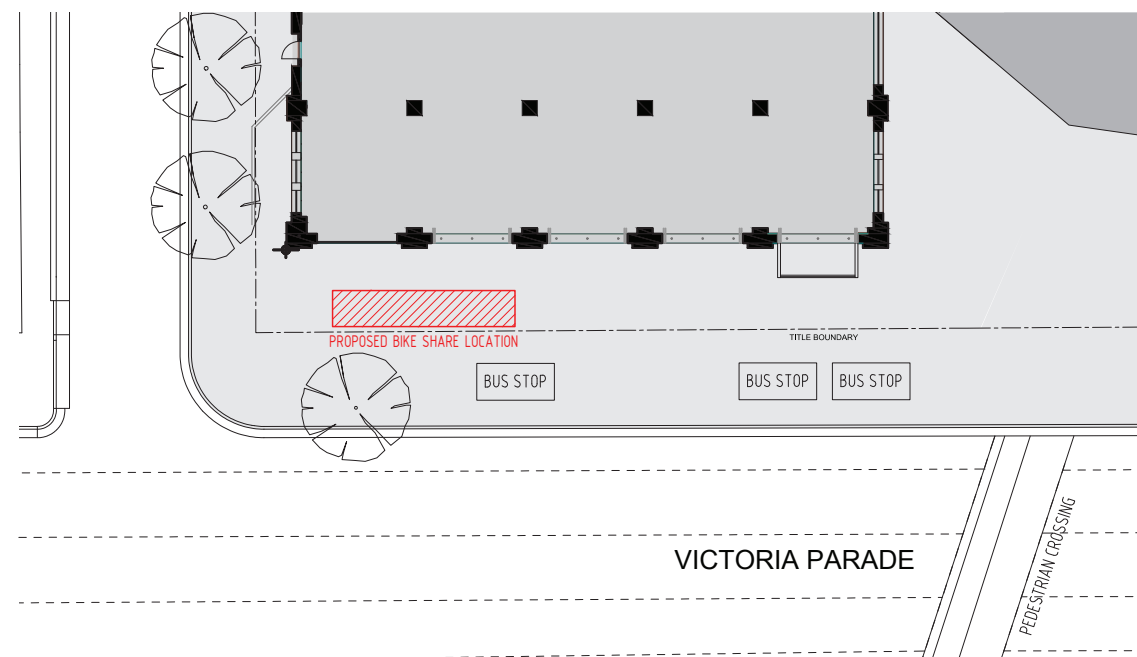
4.6.1 MELBOURNE BIKE SHARE FACILITY

Due to the proposed amendments to Napier Street, including the upgrade of the existing bike path, the retention of the Melbourne Bike Share facility in its current location is not feasible.

A new position adjacent to the existing bus stop on Victoria Parade is proposed as the location of the Melbourne Bike Share facility, in consultation with the relevant Responsible Authority.



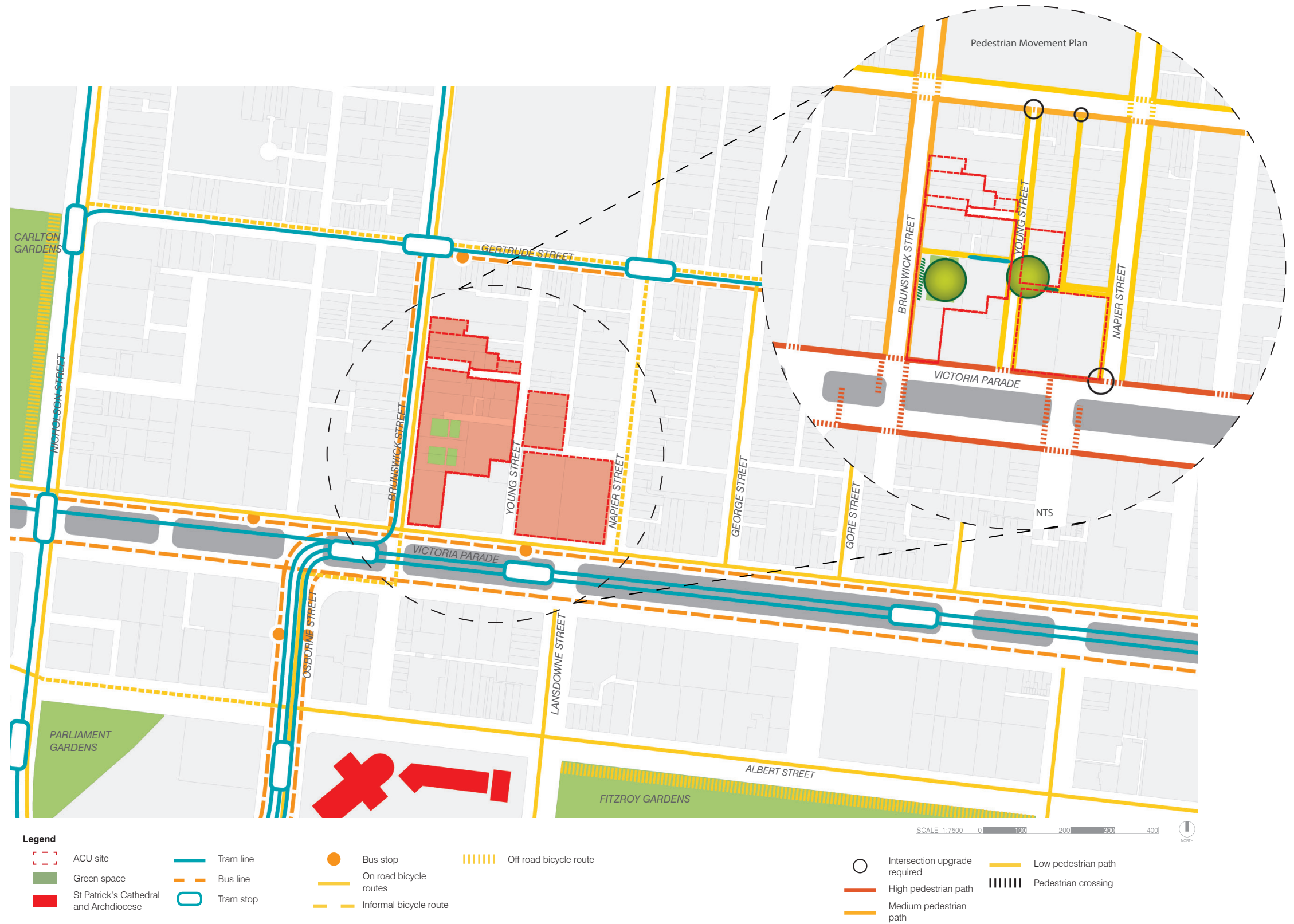
SITE PLAN



PROPOSED BIKE SHARE LOCATION
DETAILED PLAN

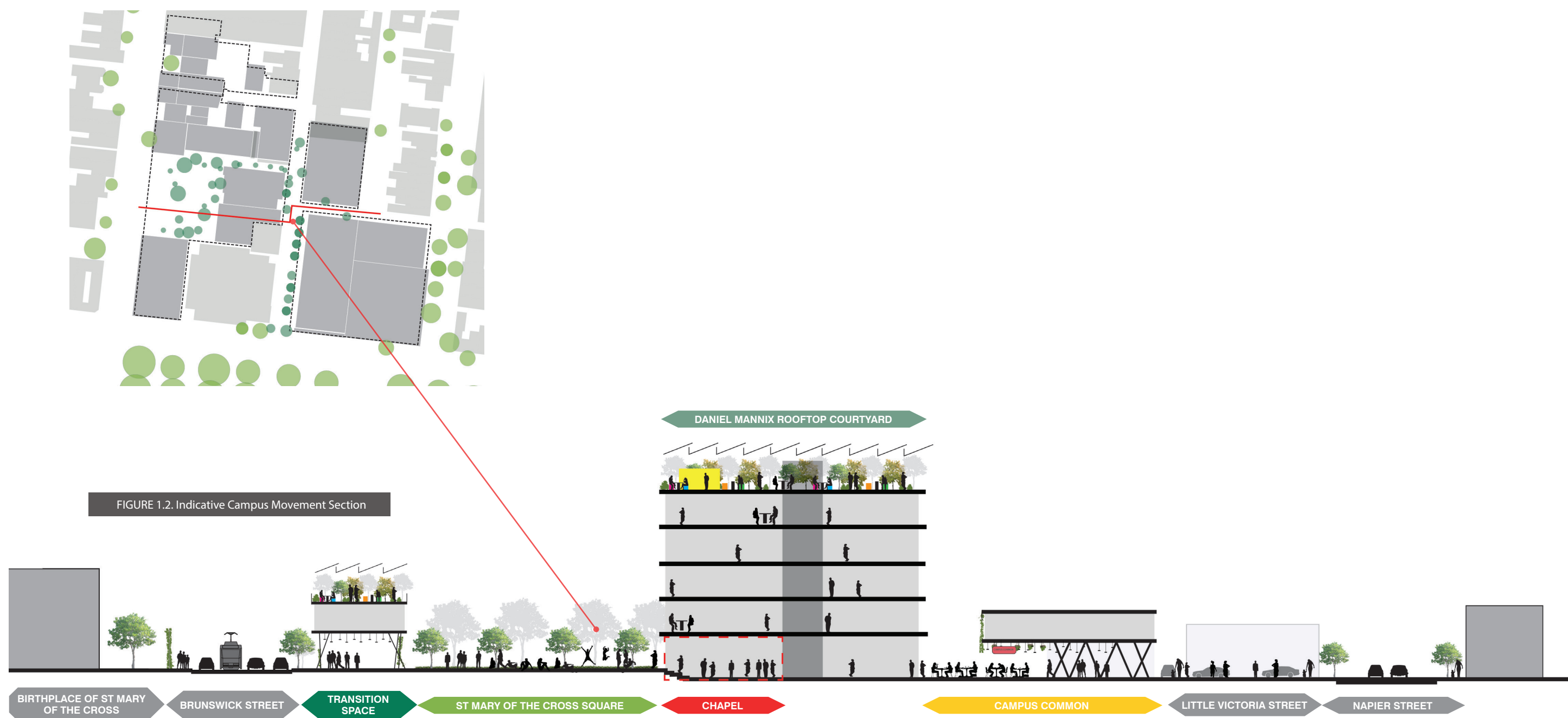
4.7 Overall Pedestrian Movement Plan

The new campus hub and new buildings with access edges will improve pedestrian movements around the campus and link the campus together and to the surrounding street network.



4.8 Pedestrian and Public Realm

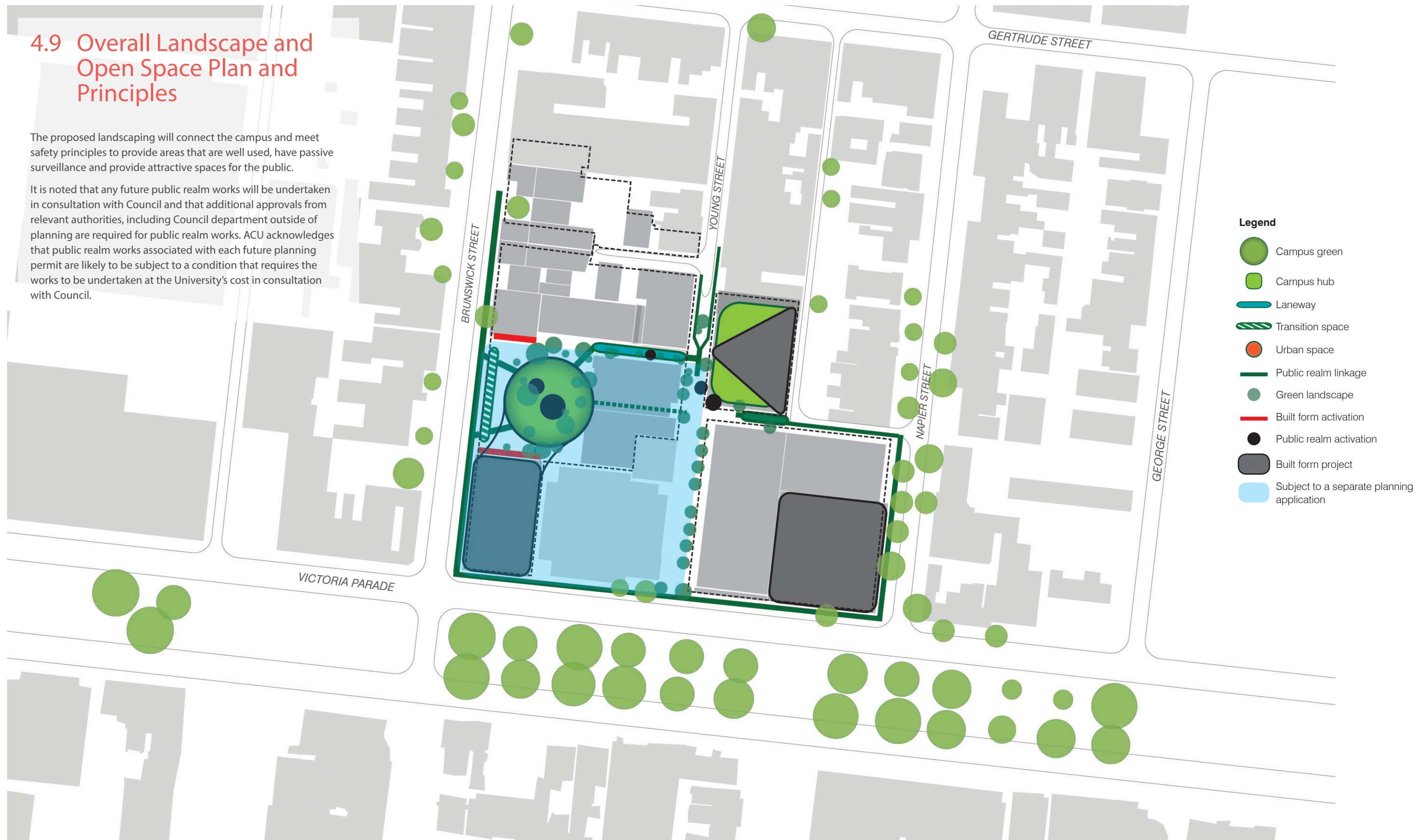
It is proposed to make consequential improvements to pedestrian access throughout the Campus as well as the quality of the public realm to provide an attractive and safe environment that will integrate with the surrounding local precinct.



4.9 Overall Landscape and Open Space Plan and Principles

The proposed landscaping will connect the campus and meet safety principles to provide areas that are well used, have passive surveillance and provide attractive spaces for the public.

It is noted that any future public realm works will be undertaken in consultation with Council and that additional approvals from relevant authorities, including Council department outside of planning are required for public realm works. ACU acknowledges that public realm works associated with each future planning permit are likely to be subject to a condition that requires the works to be undertaken at the University's cost in consultation with Council.



- Legend**
- Campus green
 - Campus hub
 - Laneway
 - Transition space
 - Urban space
 - Public realm linkage
 - Green landscape
 - Built form activation
 - Public realm activation
 - Built form project
 - Subject to a separate planning application

4.10 Landscape Master Plan

CLIMATE AND SUSTAINABILITY FRAMEWORK

There are numerous linear corridors leading from the surrounding streets to the ACU Campus that may experience wind effects. Along with the over shadowing created by the surrounding buildings, this may result in an uncomfortable microclimate at times. There are however some open areas with better solar access and that are less likely to experience wind tunnel effects.

Design opportunities:

- Take advantage of the areas that are most likely to have a desirable microclimate and establish them as places for people to stop and stay.

There is also extensive hardscaping typical of university environments. Future design should minimise stormwater run-off and moderate discharge flows through on-site absorption and retention.

Provide opportunities for Water Sensitive Urban Design (WSUD) such as:

- Use of permeable channels and paving
- decorative garden beds that act as rain gardens
- collection and retention of roof rainwater run-off and re-use on canopy trees

ACCESS AND MOBILITY

The ACU campus will become a vibrant part of the local urban realm. It is presently fragmented from the surrounding road network with sections of the campus isolated and 'off limits'. The future design will have a high level of accessibility and mobility, and encourage pedestrian use through prominent and cohesive visual way-finding opportunities.

PRIMARY PEDESTRIAN PROMENADE (SUBJECT TO SEPARATE APPROVAL)

Young Street, Duke Street and St. Mary of the Cross Square will become the primary pedestrian area that will have provision for maintenance and service vehicle access. This promenade will act as the main circulation spine through the campus.

Design opportunities include:

- Medium canopy deciduous trees
- Feature paving
- Feature lighting including canopy lighting

- Short term seating areas
- WSUD opportunities including permeable paving and raingardens

SECONDARY PEDESTRIAN LINKS

The north end of Young Street and the west half of Little Victoria Street will become the secondary pedestrian area that will also have provision for maintenance and service vehicle access. These routes will act as links to the main circulation spine through the campus.

Design opportunities include:

- Planter boxes
- Vertical green walls
- Feature paving
- Feature lighting in pavement

TRANSITION ZONES

Transition zones are pedestrian cross over entry points that signify a change in urban neighbourhood such as from street realm to campus environment which could be either pedestrian only or shared conditions.

Design opportunities include:

- Use of pavement material to produce change
- Signage
- Colour
- Lighting

VIEWLINES

There are long narrow vistas to the campus from surrounding main roads such as Victoria Parade, Napier Street and Gertrude Street. ACU identity and way finding should be the primary design feature to make the campus legible and accessible.

Design opportunities include:

- Innovative features on campus building walls such as murals, vertical sculptures and green walls
- Use of signature signage
- Lighting
- Consolidation of wall materials used at pedestrian level to uniform space that act as a visual symbol representing the identity of the ACU campus

OPEN SPACE AND LANDSCAPE FRAMEWORK

ACU FORECOURT - YOUNG STREET

The generous open area surrounding the new Campus Hub will be composed of large flexible spaces and smaller, more intimate spaces. This forecourt will become the key social hub for the campus and will also be accessible to the public, making a positive contribution to the local public realm.

Design opportunities include:

- Active café precinct
- Creative use of paving lighting
- Landscape details such as seats, bins, lights and feature paving
- Retention of existing trees on Young Street, along with the addition of new trees (subject to soil volume constraints)
- Urban art such as sculptures
- Space for active recreation such as basketball half court
- Large and small grassed spaces

VICTORIA PARADE / NAPIER STREET ENTRY AREA

At the corner of Victoria Parade and Napier Street there is an urban edge that will reinforce the presence of the campus from commuters travelling from the east via a creative entry design.

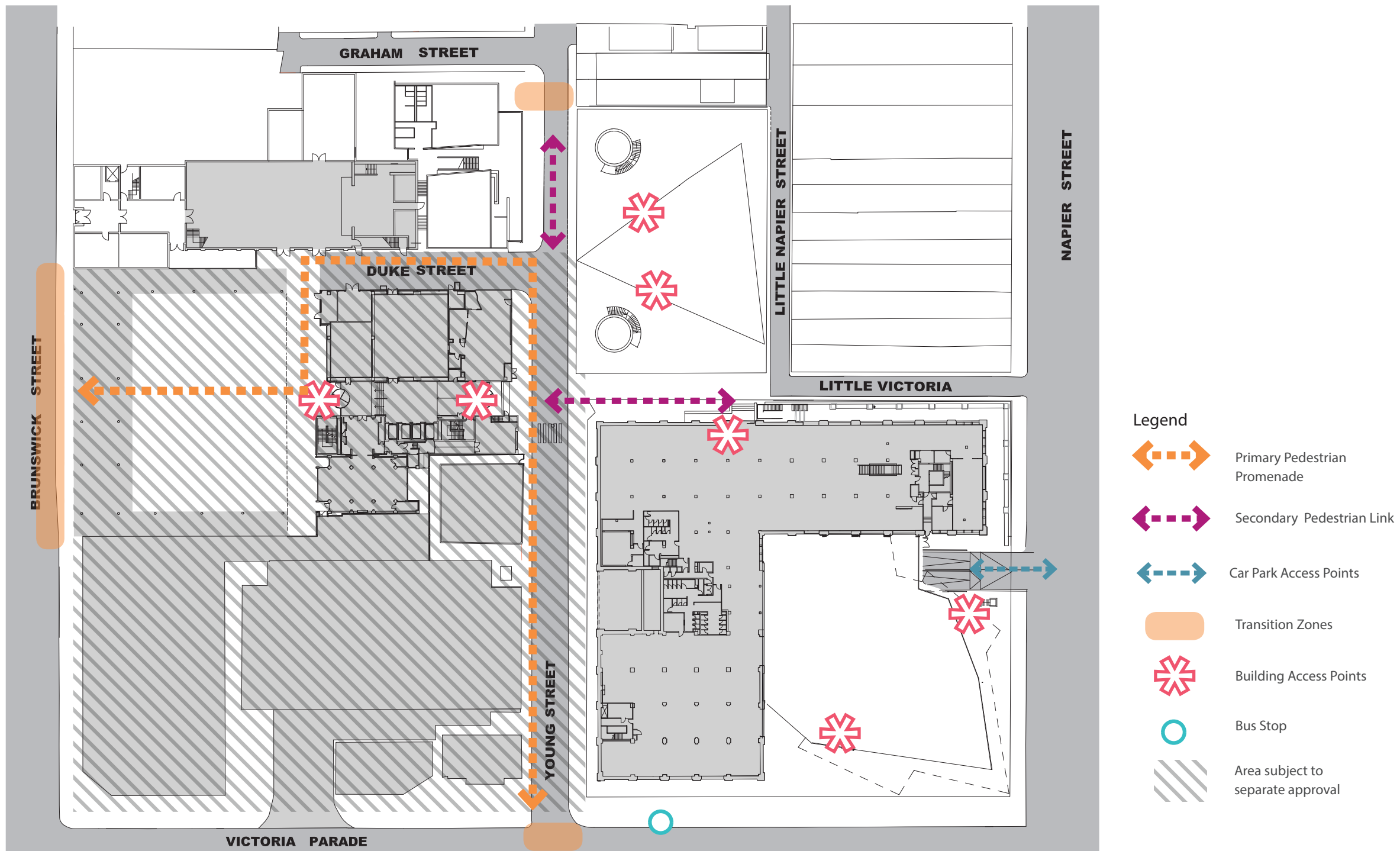
Design opportunities include:

- Integrated seating areas that cater for short stops/meeting points
- Retention of most existing canopy trees, along with the addition of new trees
- Feature paving
- Signage
- Lighting

SAFER SPACES

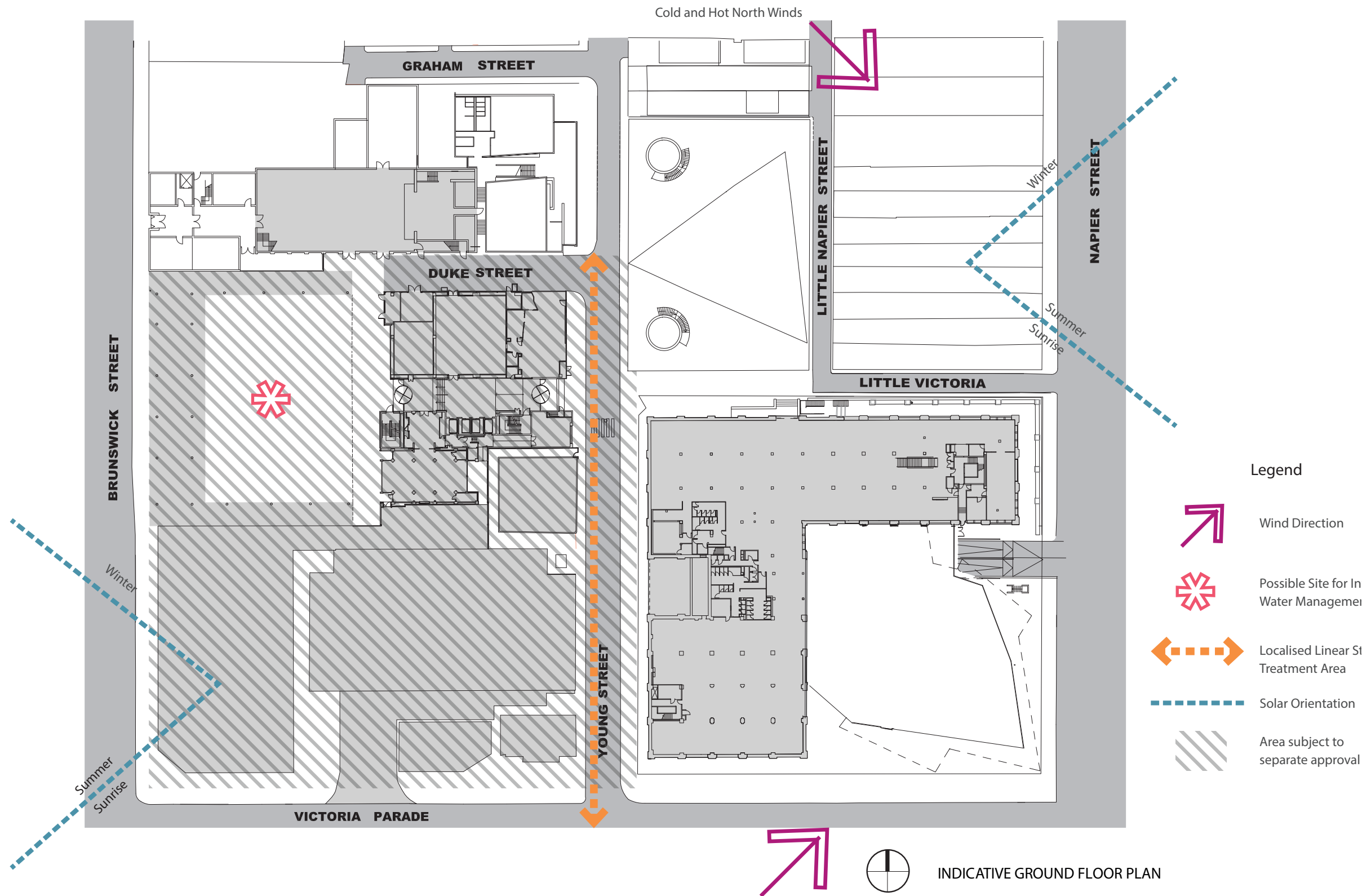
The approach to the landscape design is to increase activity and maximise visual and physical connectivity through the spaces. Lighting will provide an inviting after hours environment and the structure of planting will ensure direct sight lines through low ground level planting and high canopy trees.

4.10.1 ANALYSIS PLAN 1 : ACCESS AND MOBILITY PLAN

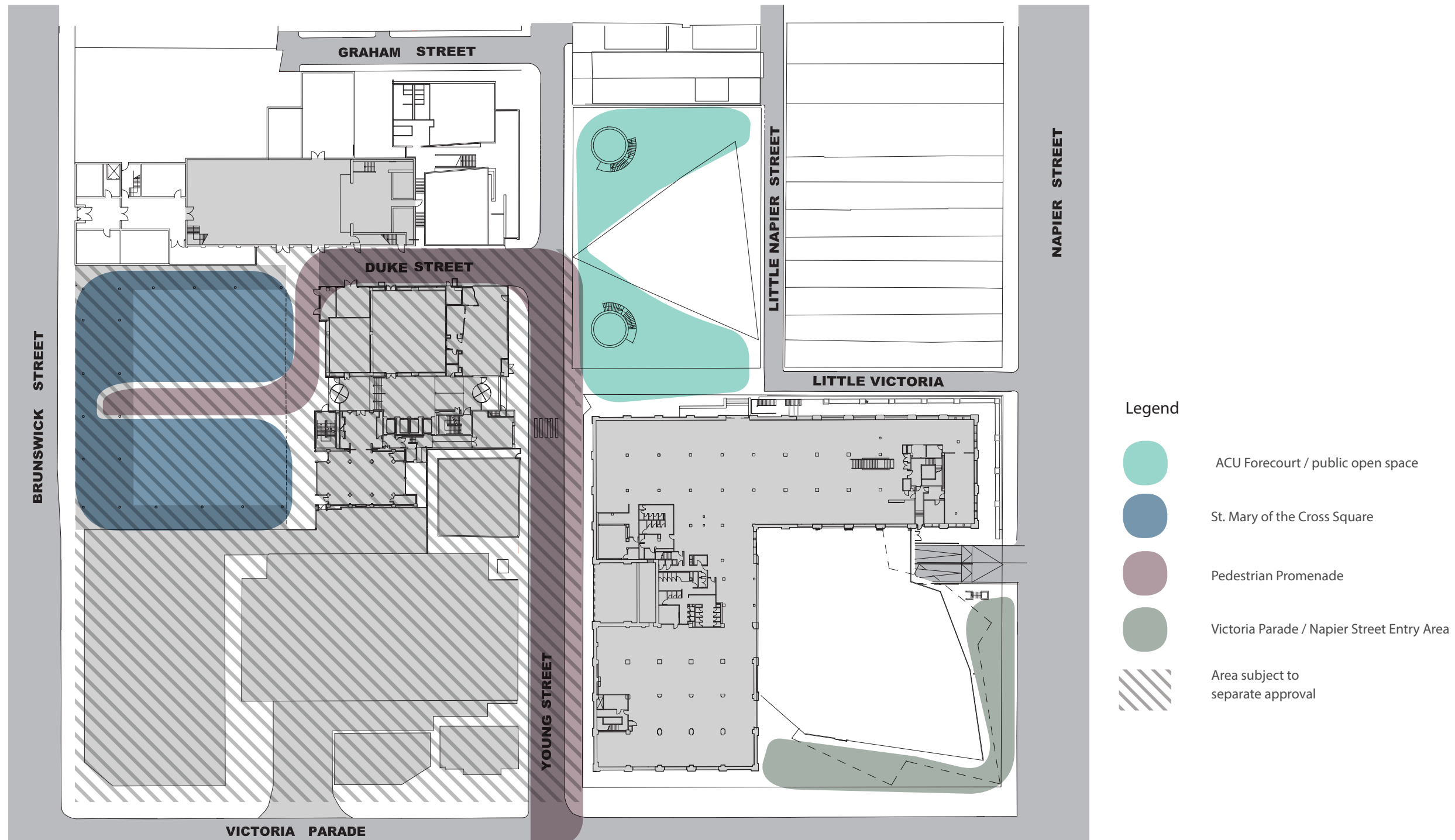


INDICATIVE GROUND FLOOR PLAN

4.10.2 ANALYSIS PLAN 2 : CLIMATE AND SUSTAINABLE FRAMEWORK PLAN

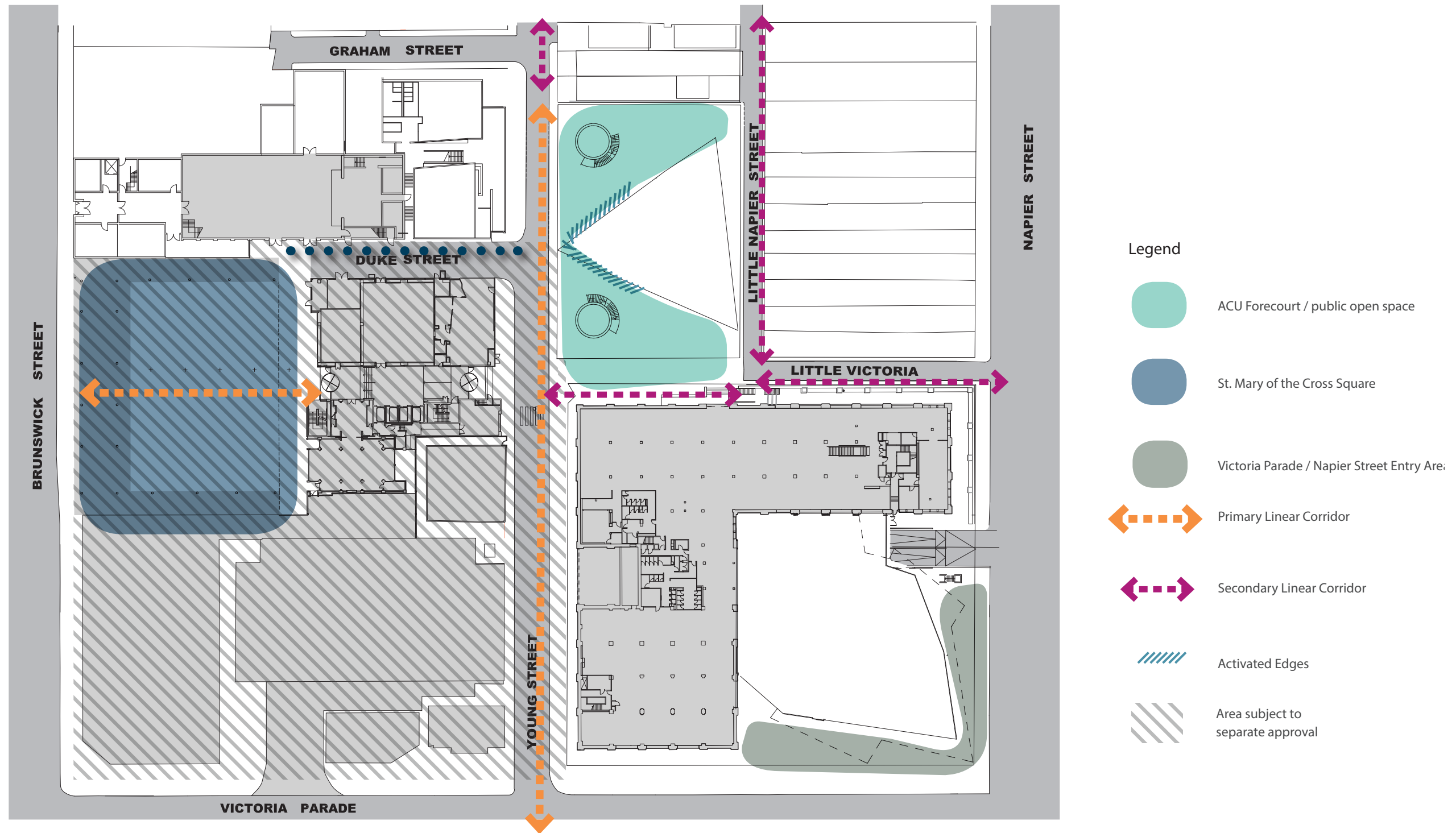


4.10.3 ANALYSIS PLAN 3 : INDICATIVE LANDSCAPE PLAN



INDICATIVE GROUND FLOOR PLAN

4.10.4 ANALYSIS PLAN 4 : OPEN SPACE AND LANDSCAPE FRAMEWORK PLAN



INDICATIVE GROUND FLOOR PLAN

4.10.5 LANDSCAPE CHARACTER

ACU FORECOURT

Intent

- To provide a welcoming, high technology hub in a campus style environment with distinctive landscaping.

Objectives

- To provide good, clear access from surrounding links using signage and lighting.
- To compliment the active edge with distinctive landscape features such as feature paving, urban art and thematic landscaping.
- To provide good, clear access from surrounding links.
- To provide views to the hub from the surrounding streets to reinforce its presence.
- To allow for active and passive recreation
- To be the key social hub for students as well as a public open space providing amenity for the local community.



PEDESTRIAN PROMENADE

Intent

To provide for a clear way finding identity through the campus set in a well landscaped environment and prominent connections to the surrounding streets.

Objectives

- To provide distinctive landscape features such as feature paving and thematic vertical landscaping including deciduous canopy trees.
- To incorporate WSUD opportunities including raingardens.
- To provide good, clear access from surrounding links.
- Provide views to the hub from the surrounding streets to reinforce its presence



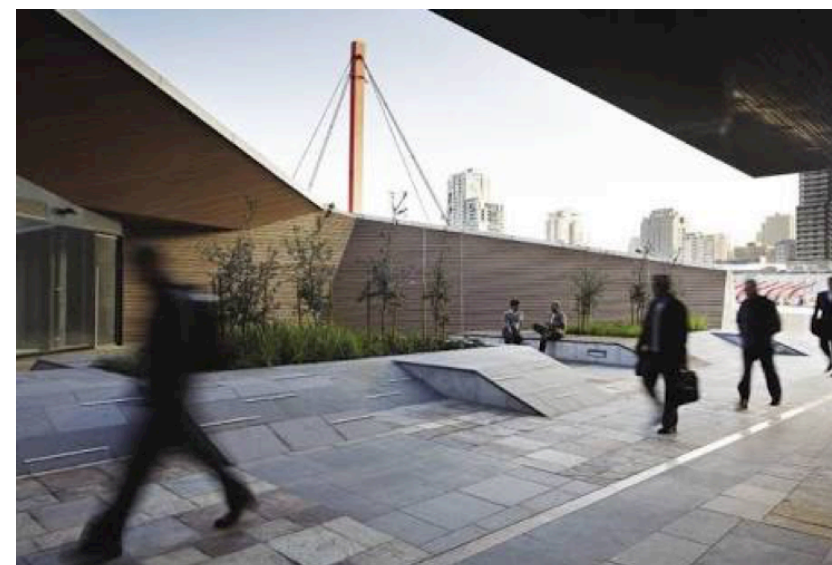
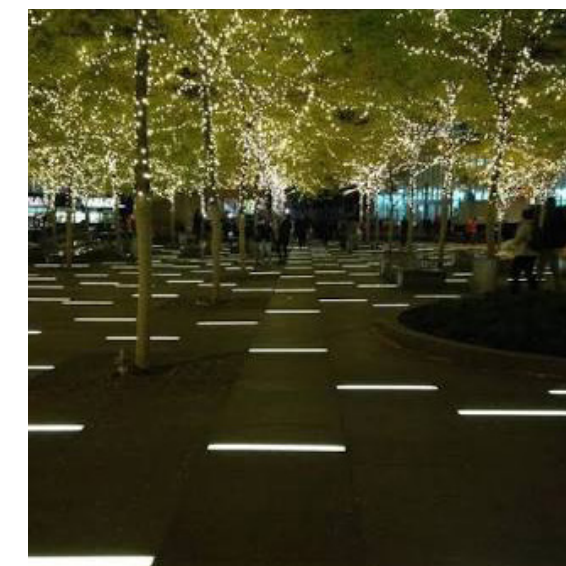
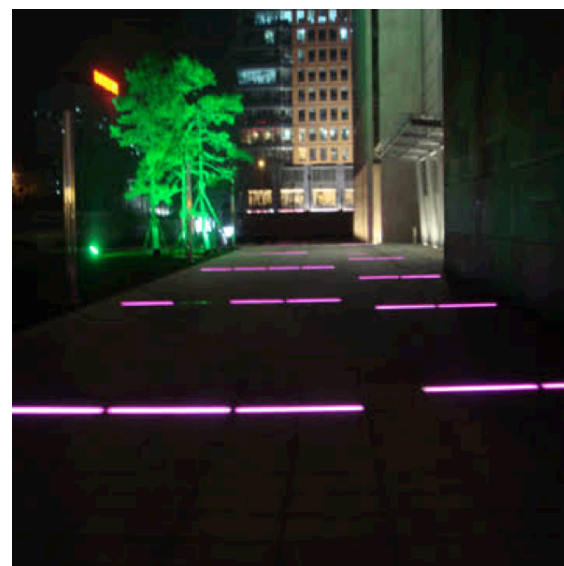
VICTORIA PARADE / NAPIER STREET ENTRY AREA

Intent

To enhance the existing entry to the campus from Victoria Parade

Objectives

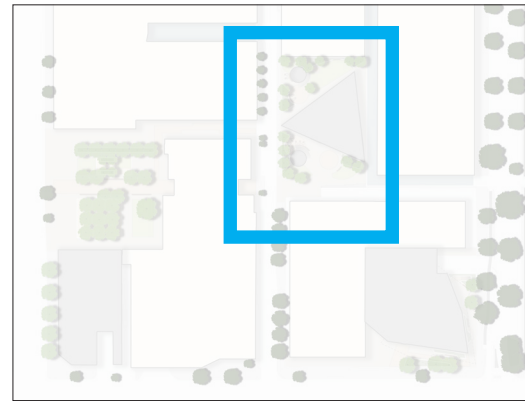
- To provide integrated seating areas that caters for short stops/meeting points.
- To provide distinctive landscape features such as feature paving and deciduous canopy trees.
- Retain the existing tree character of the streets



4.10.6 INDICATIVE LANDSCAPE MASTER PLAN

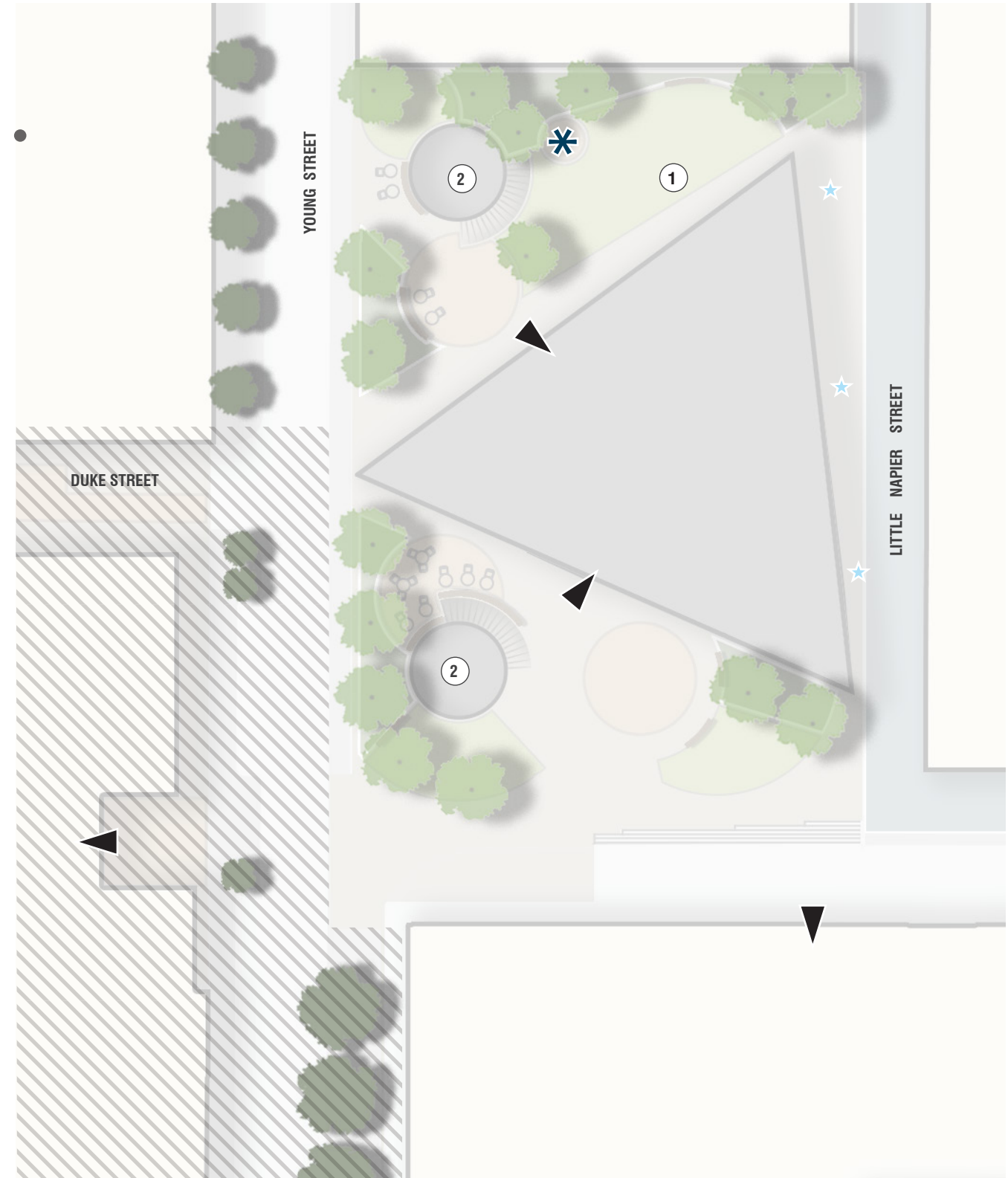


4.10.7 ACU FORECOURT / STUDENT HUB DETAIL PLAN



Legend

	Existing trees to be retained		Building entries
	Proposed trees		Signage / Gathering Point
	Integrated bench seating		Sculptural element
	Turf		Laneway lighting (low level to improve safety)
	Planter bed (low shrubs & groundcover)		Campus green
	Feature paving		Light wells
	New paved area		Area subject to separate approval
	Proposed Buildings		
	Laneways		
	Moveable chairs & tables		



SCALE 1:400 @ A3
0 5 10 15 20 NORTH

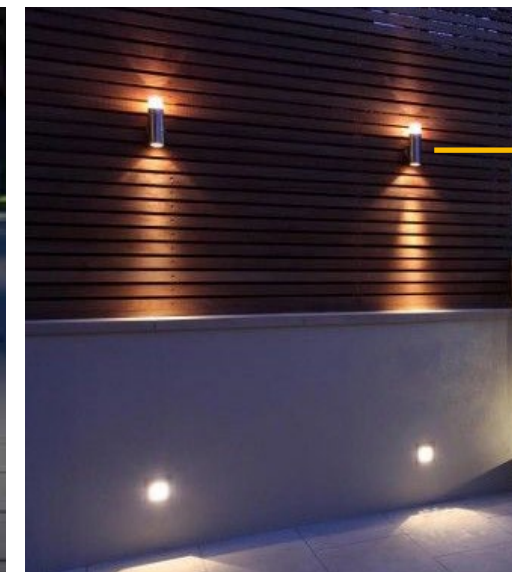
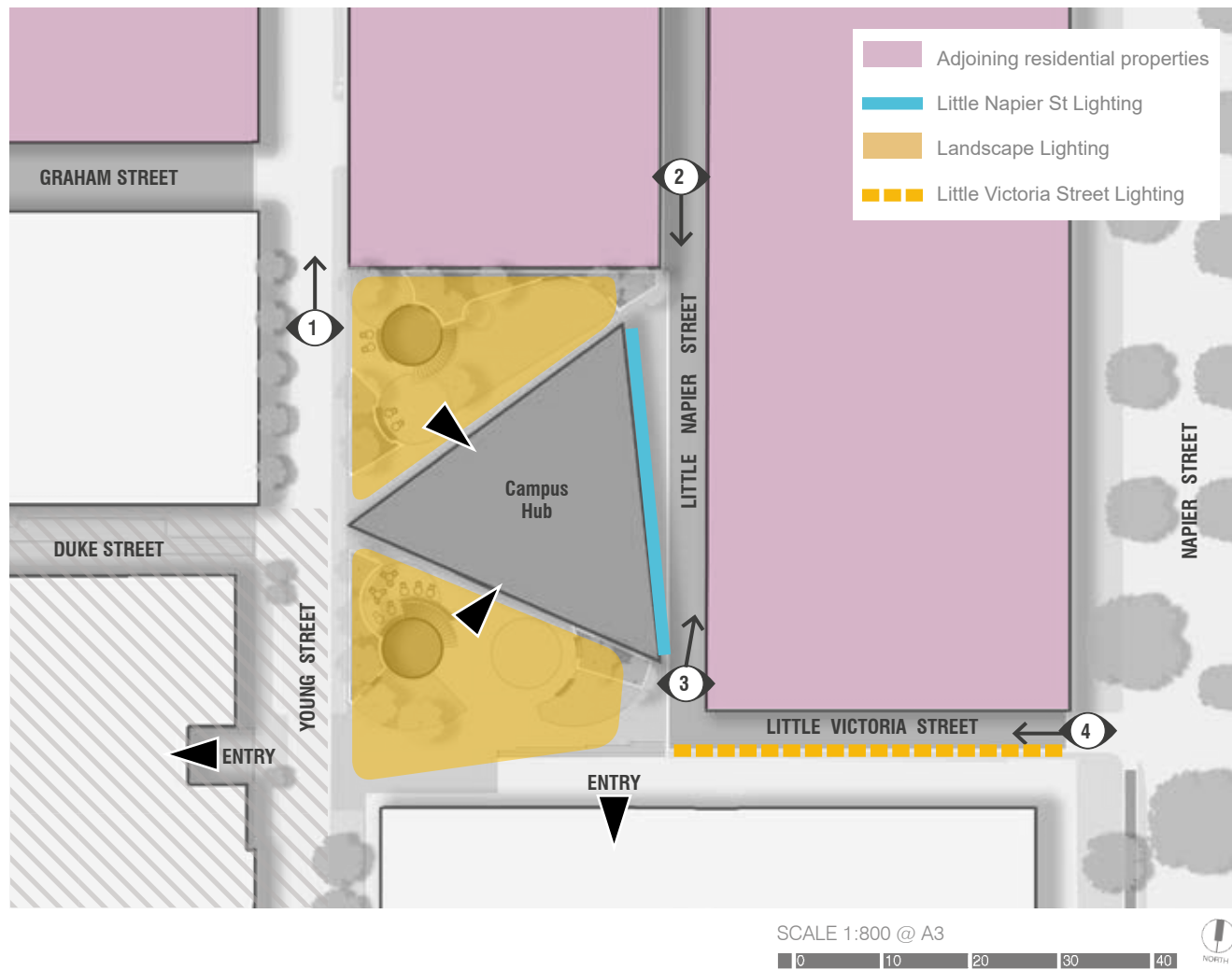
4.10.8 ACU HUB LIGHTING DETAILS

Intent

- To provide lighting which supports safe movement and a pleasant user experience, while avoiding undesirable impacts on adjacent residential properties.

Objectives

- Prevent light spill into residential properties.
- Avoid glare.
- Allow for lighting along Little Napier Street that contributes to the street feeling more safe and inviting, without being excessive.
- Ensure key paths through the open spaces around the Campus Hub are illuminated in a manner that allows for safe movement.
- Consider localised feature lighting to enhance landscape elements and improve ambience within the open spaces around the Campus Hub.



Little Victoria St lighting

As for Little Napier Street, this secondary path of movement will have lighting which is mostly reflected onto other surfaces to avoid glare and spill to adjacent residential areas. Depending on the approach for the public realm, there are a few options for lighting along Little Victoria Street.

- If the street becomes a shared zone, lighting can be incorporated into bollards (with light projecting onto the ground).
- Otherwise if the existing layout is retained, lighting can be incorporated into the low wall which runs along the southern edge the street (e.g. LED strip lighting).

In any case, there may be borrowed light from the windows of the ACU building to the south, which may be supplemented by wall-mounted lights.