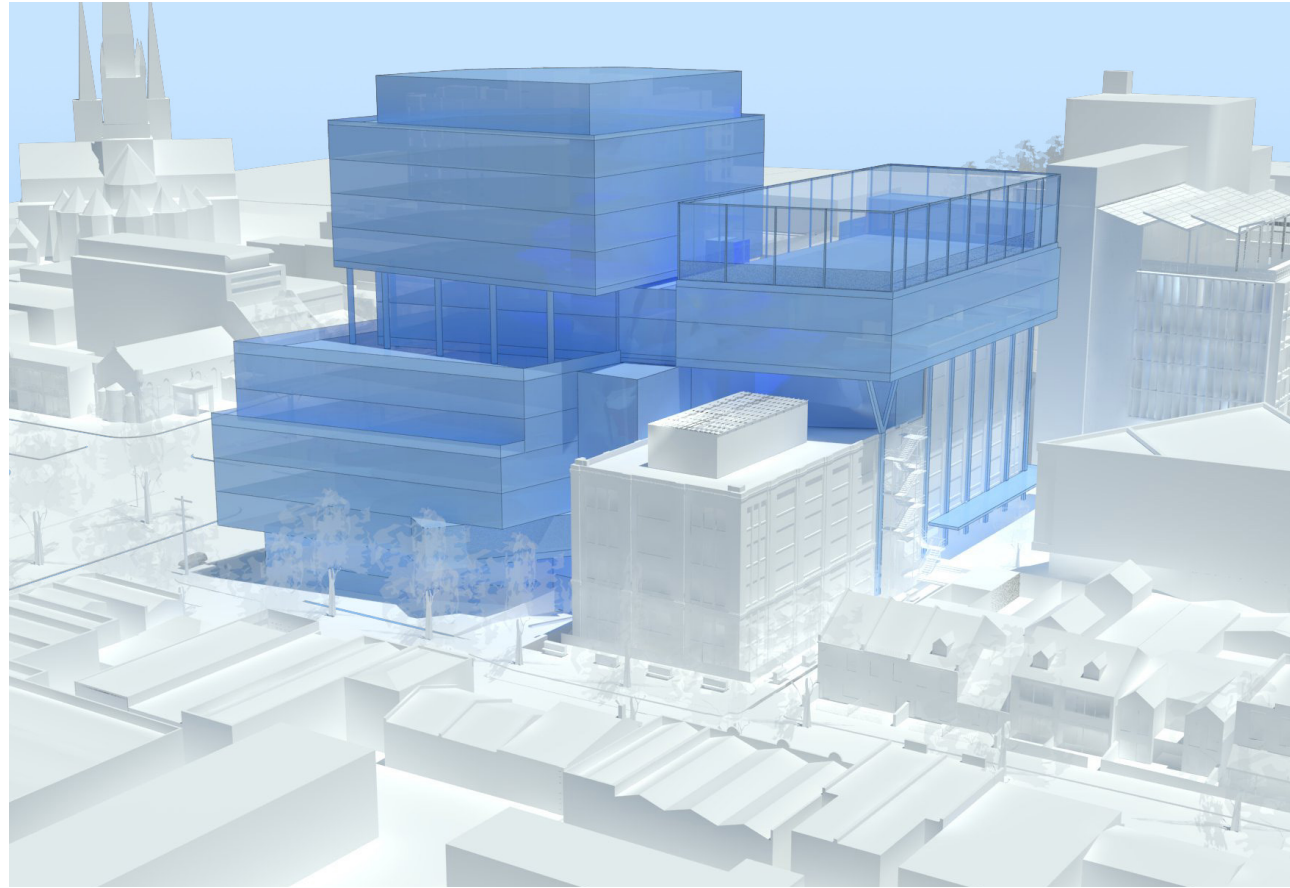
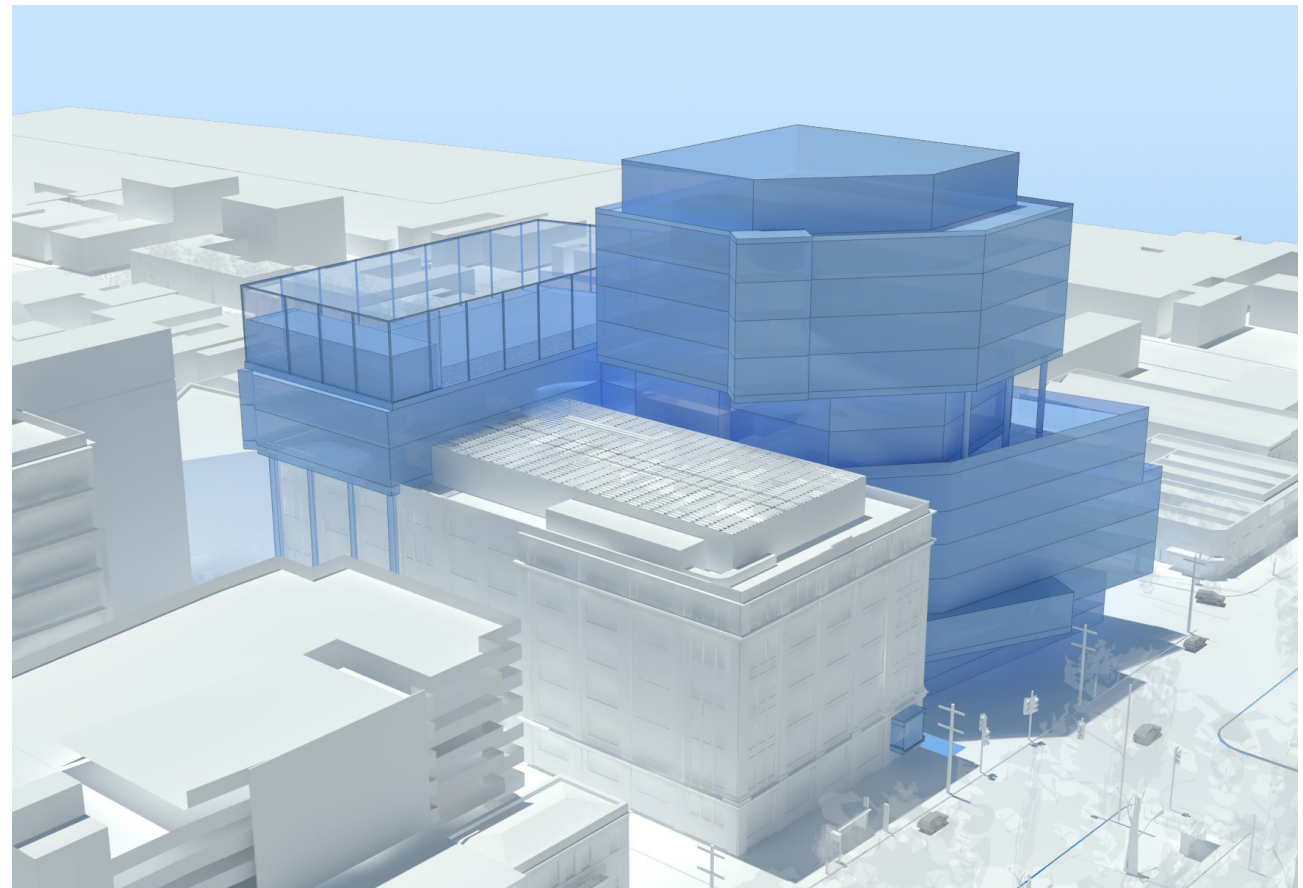


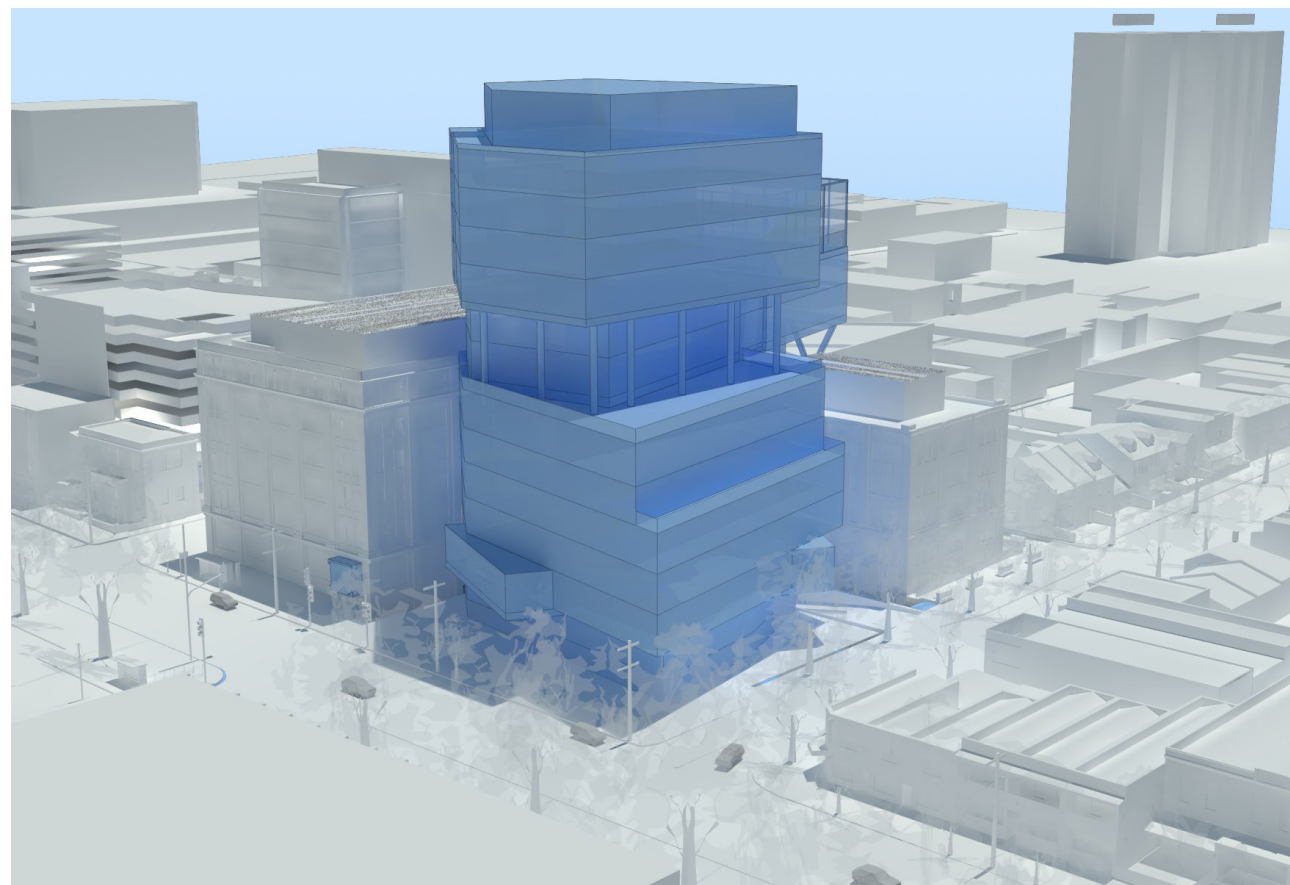
4.4.5 INDICATIVE BUILDING ENVELOPES



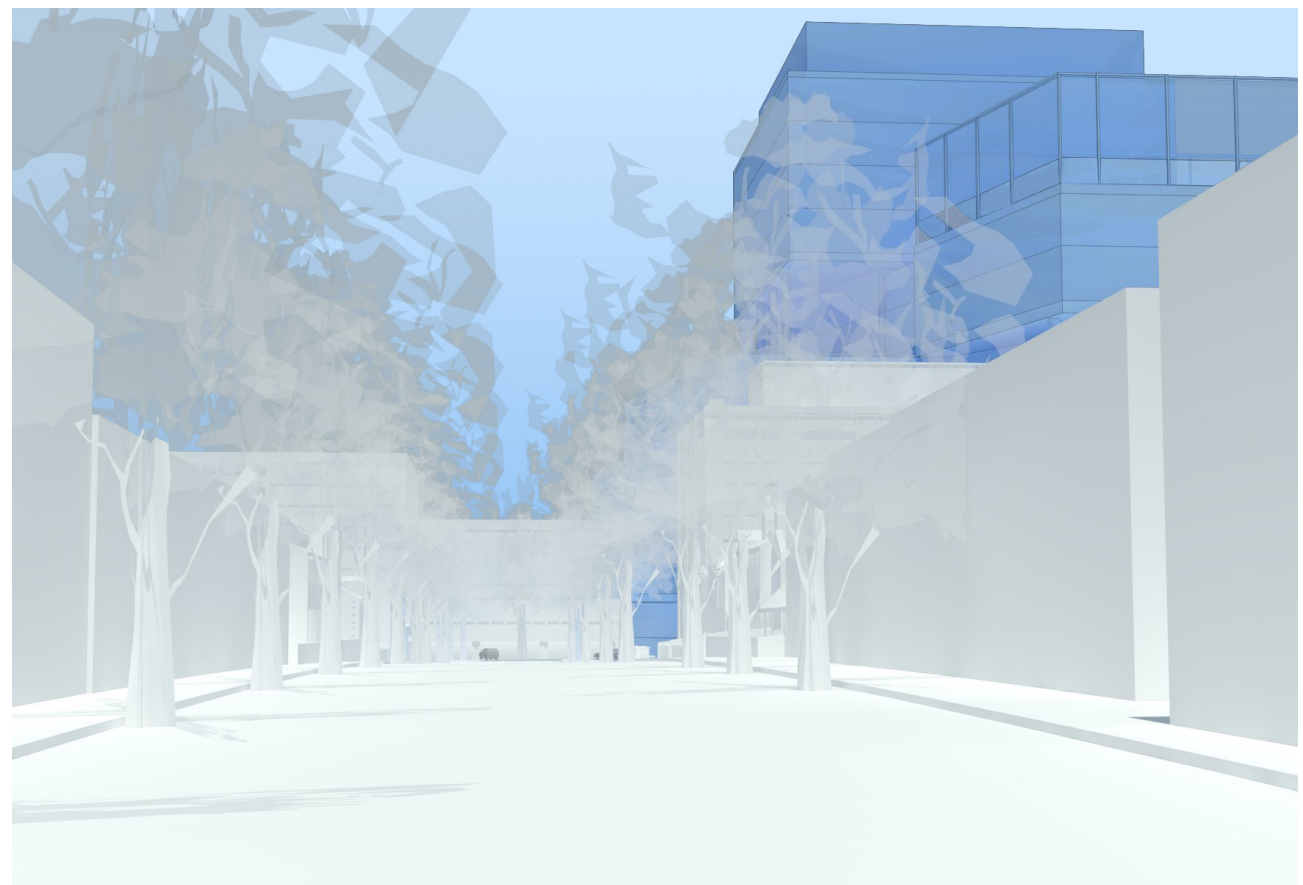
Looking south down Napier Street



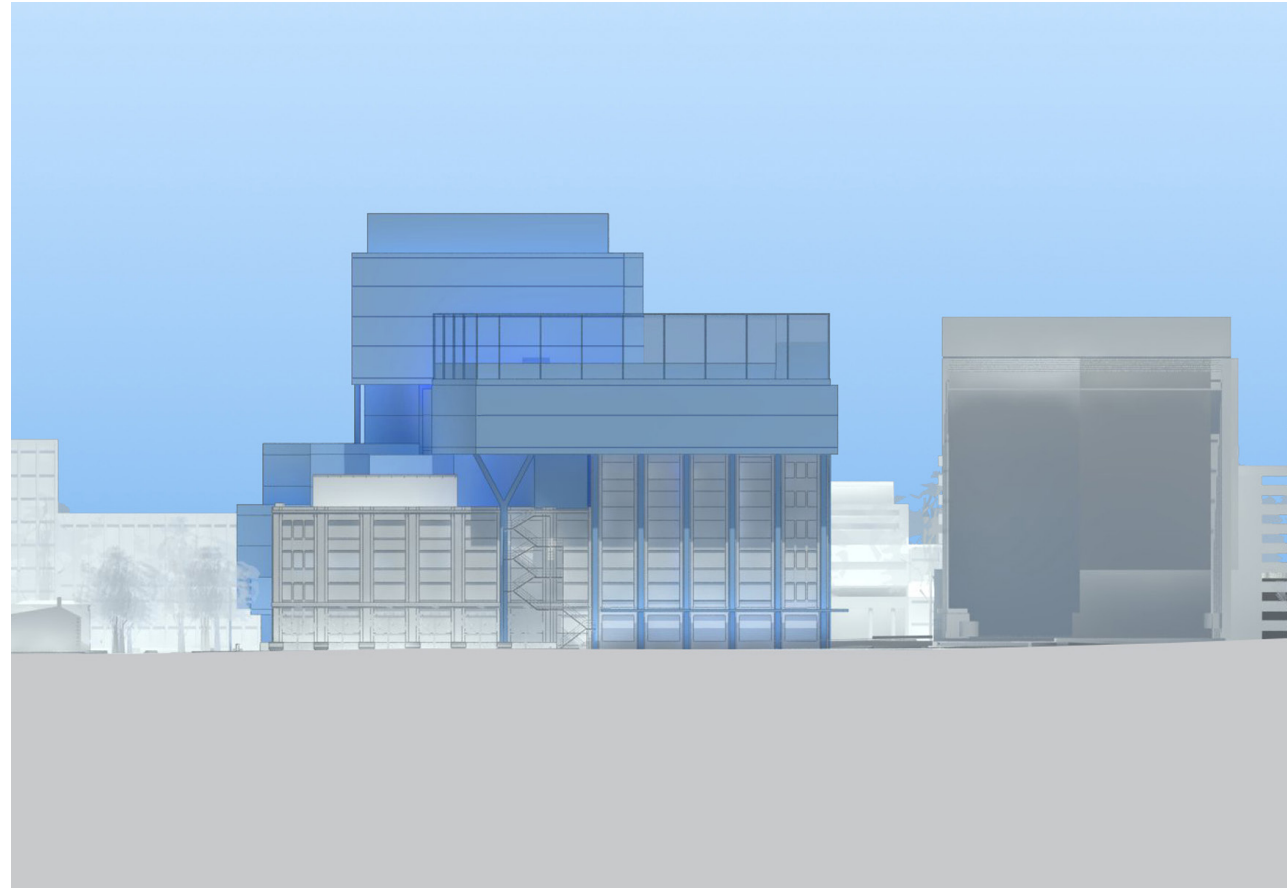
Looking north-east from Victoria Parade



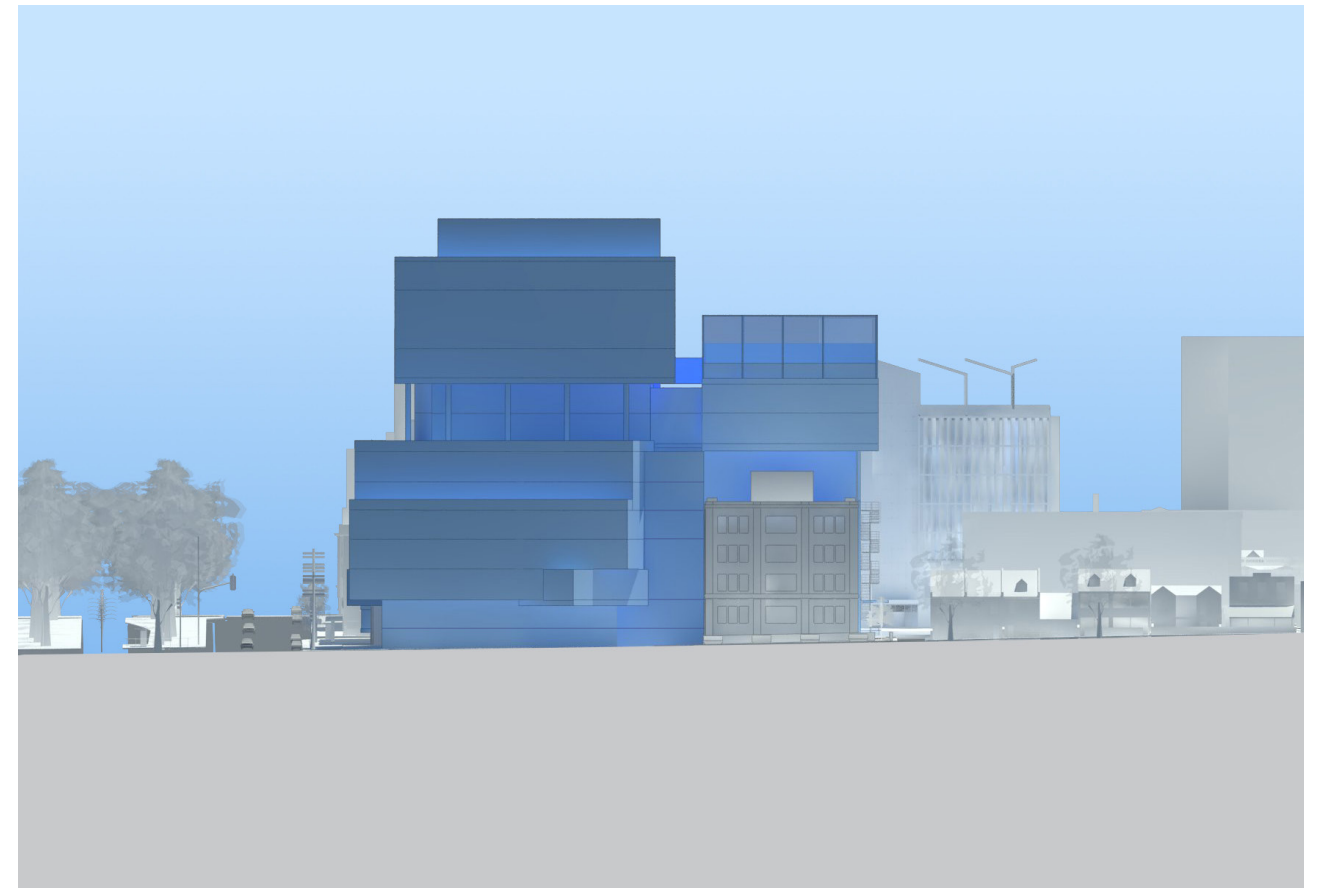
Looking north-west from Victoria Parade



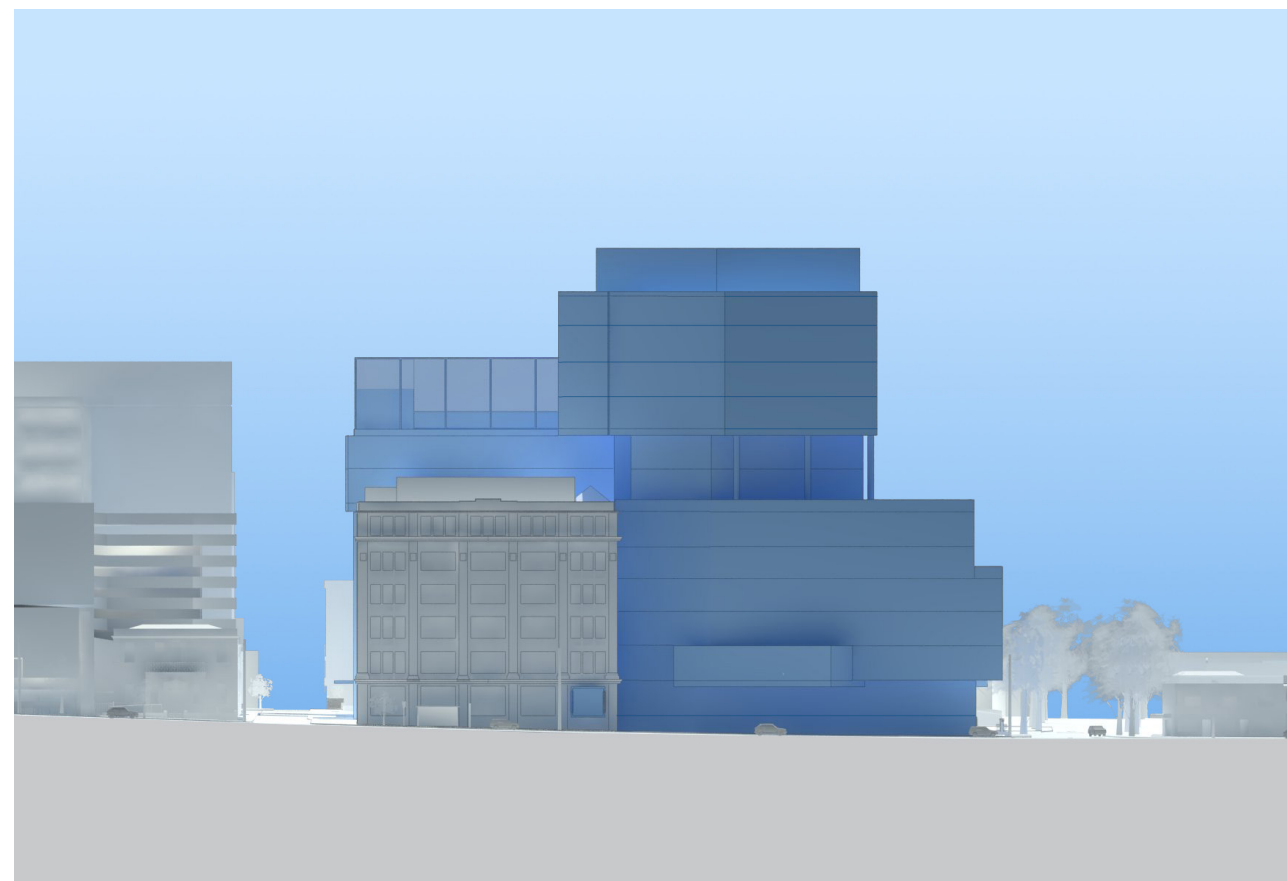
Looking north up Young Street



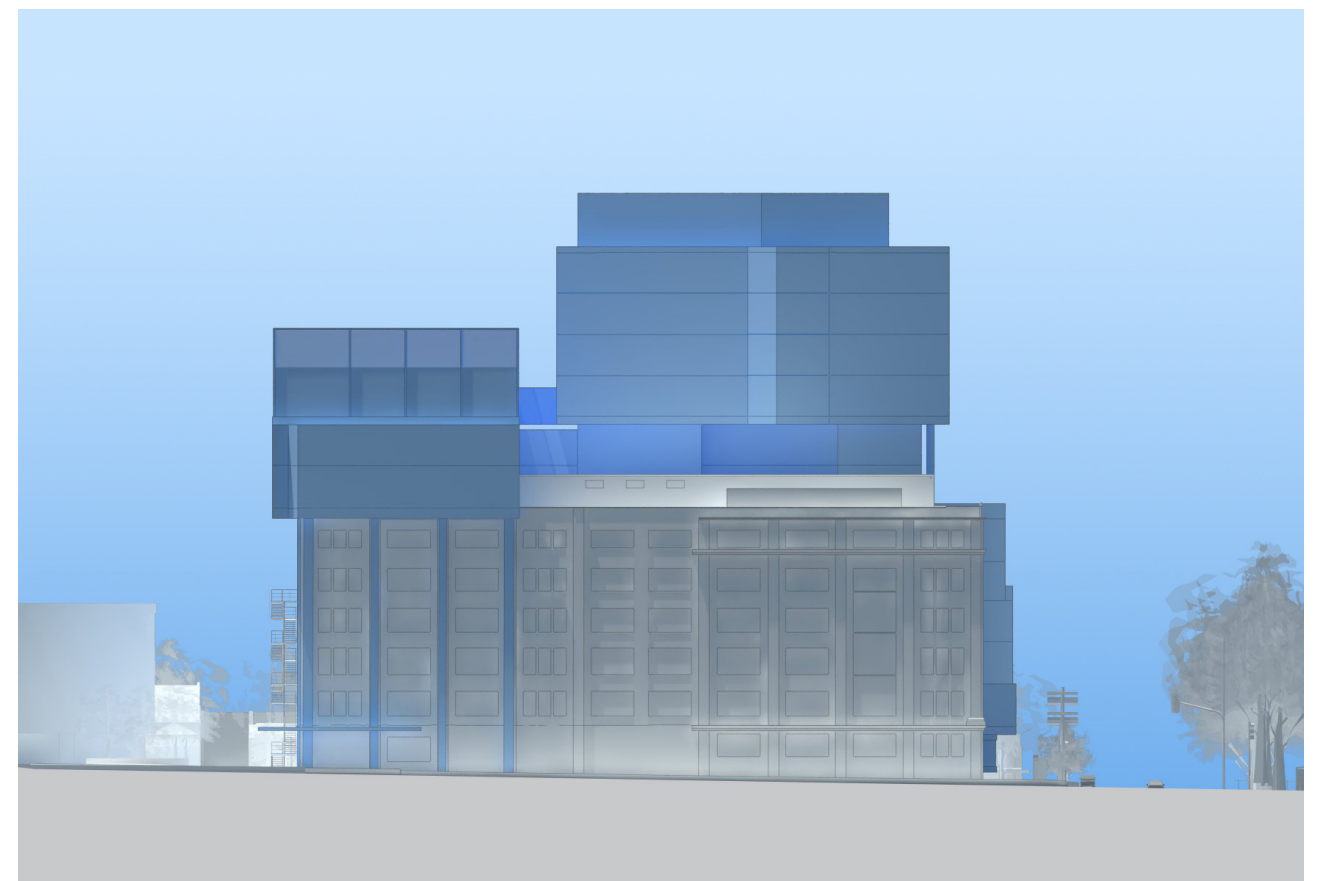
North Elevation



East Elevation



South Elevation



West Elevation

4.4.6 INDICATIVE BUILDING APPEARANCE

The following diagrams give an indication of the general appearance of the proposed building. This will be subject to further review and refinement at the detailed design and planning permit stage.



Aerial view over Napier Street looking west



Street view from the corner of Brunswick Street and Victoria Parade



Aerial view above Napier Street residences



Street view from Victoria Parade looking towards Young Street



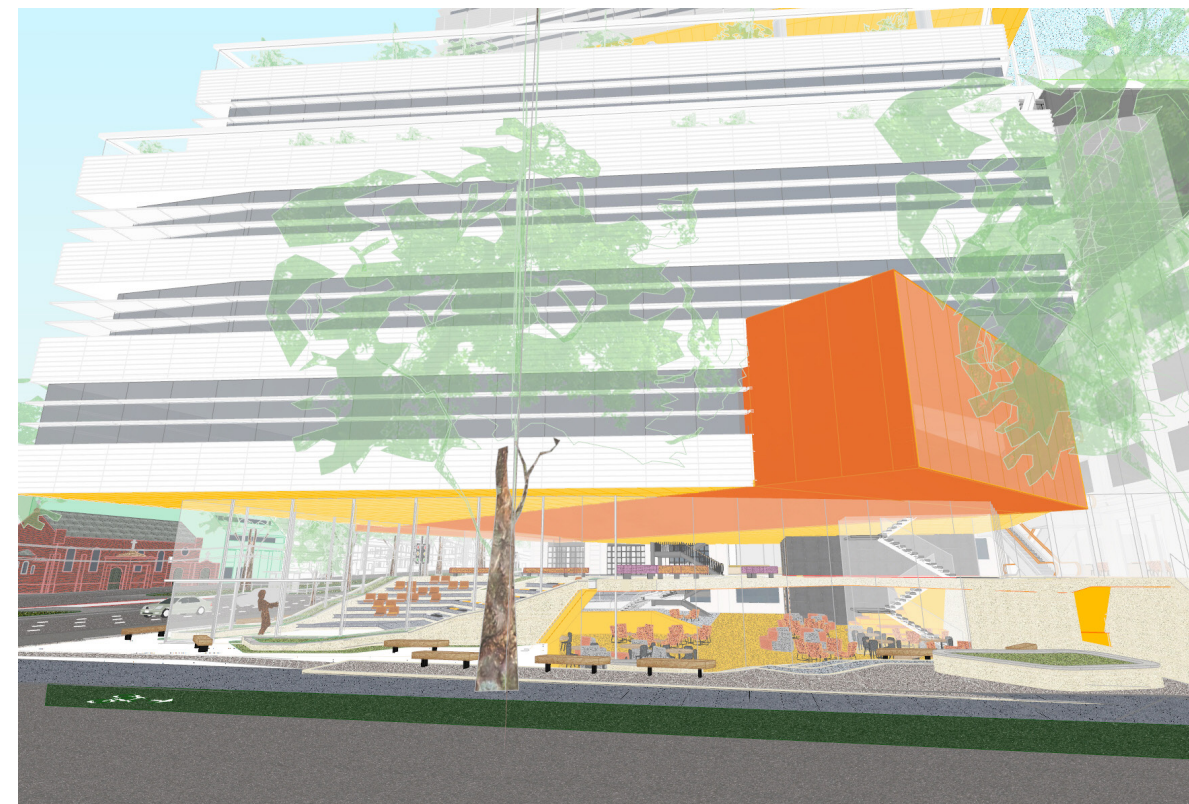
Street view from the end of Landsdowne Street looking north



Street view looking south along Napier Street



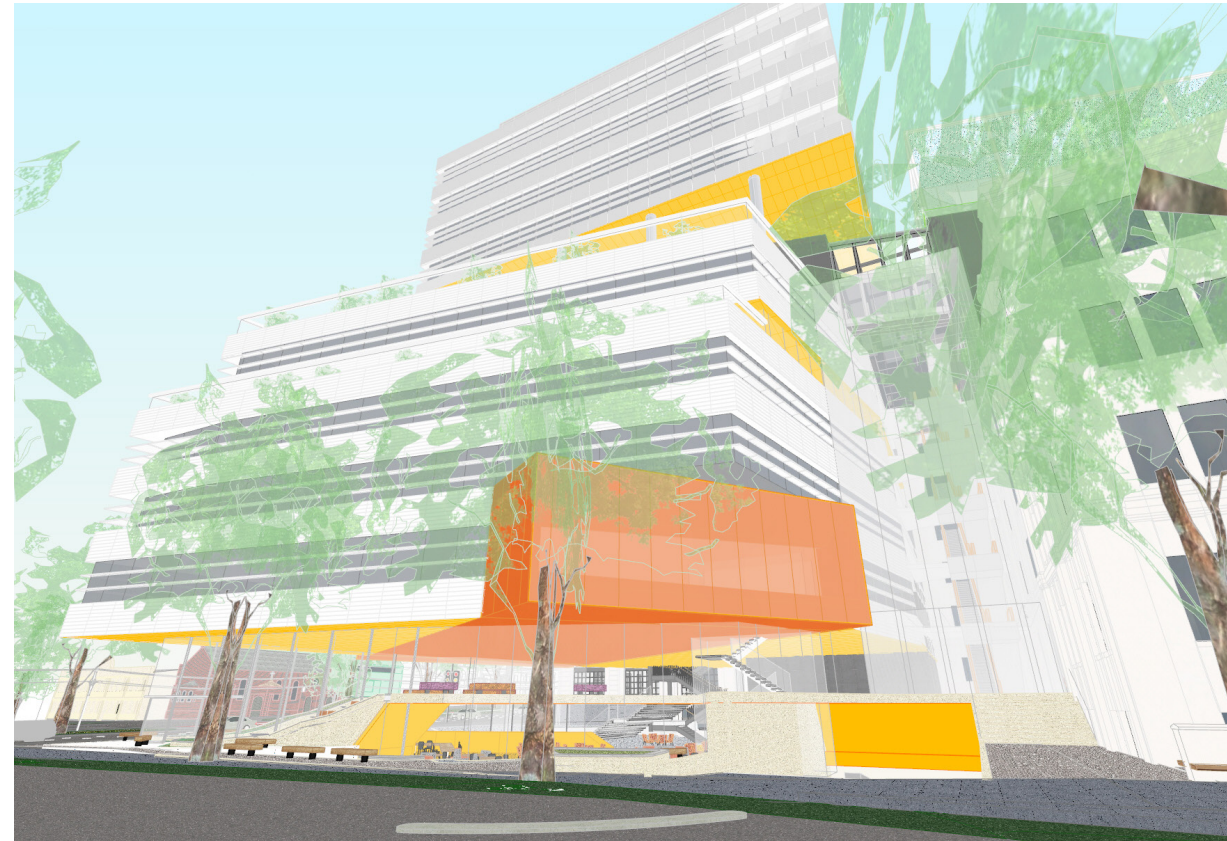
Street view looking west up Victoria Parade



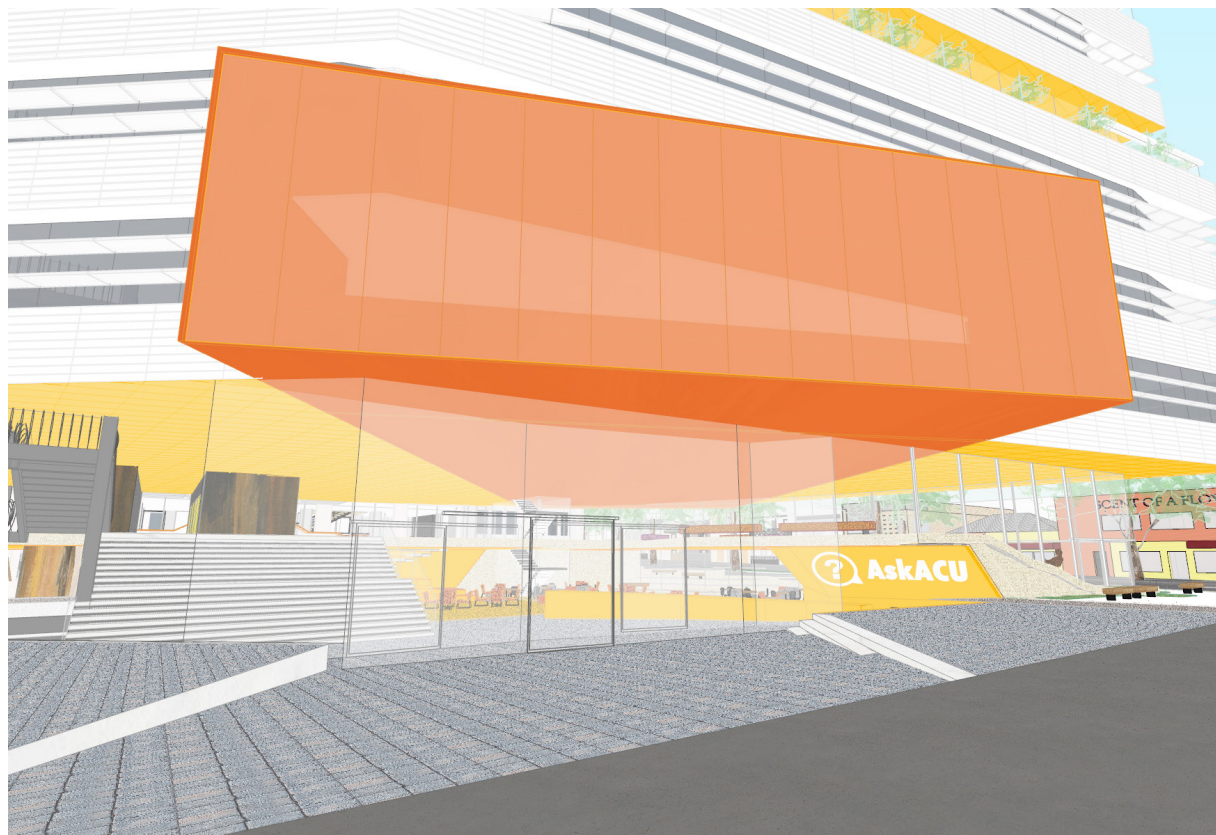
Street view from eastern side of Napier Street



Street view from the Landsdowne Street tram stop



Street view from Napier Street



Street view at the entry of the 115b building



Street view from the corner of Victoria Parade and Napier Street