



Attn: Councillors  
City of Yarra  
PO Box 168  
RICHMOND VIC 3121

[by email]

12 February 2018

**Public-Realm Works**  
**18-62 Trenerry Crescent, Abbotsford (Amendment C128)**

Dear Councillors,

I write regarding our site, 18-62 Trenerry Crescent, Abbotsford and Amendment C218 to the Yarra Planning Scheme which is currently before Council.

A key objective going into this process was, and remains, working closely with Council to **improve the amenity of the precinct** surrounding the site. These improvements are important to us, as future occupiers, as well as to the community in which we will be living and working. To that end, we have engaged Tract Consultants to produce a concept plan for upgrading the public realm adjacent to the site. The **Tract Public Realm Concept Plan** (attached) takes in Trenerry Crescent, Turner Street and the banks of the Yarra River. It addresses pedestrian amenity, pavement treatments, street trees, car and bike parking, revegetation and embankment stabilisation to the river. Throughout, it relies on **environmentally sustainable design principles**, including water-sensitive urban design.

Our family has been a long-term supporter of Australian art and emerging Australian artists. As an additional part of our proposal, we are very excited to share with you that we will be funding a **significant art installation**, with a **stipend of \$50,000** being awarded to the successful artist. In selecting the artist, we will of course work to the goals outlined in your Public Art Policy 2015-2020.

Additionally, we undertake to create a publicly accessible **site history installation**, similar to that provided in the Jacques development in Coppin St, Richmond.

Whilst we can offer a firm commitment around some elements of our proposal (such as funding for an art installation), it is not possible to commit to a precise level of detail around other elements prior to a development application being formalised. Numerous authorities will have to be consulted, which can only occur once a design is approaching finalisation. In turn, the **design can only be finalised once the planning controls are settled**.

We nonetheless **offer this commitment**: to upgrade the public realm adjacent to the site to a scope and detail to be determined in consultation with Council and generally in accordance with the Tract Public Realm Concept plan.

We are, of course, happy to discuss this undertaking at your convenience.

Yours sincerely



John Valmorbida  
Joval Pty Ltd





# 18-62 Trenerry Crescent, Abbotsford Public Realm Concept

---

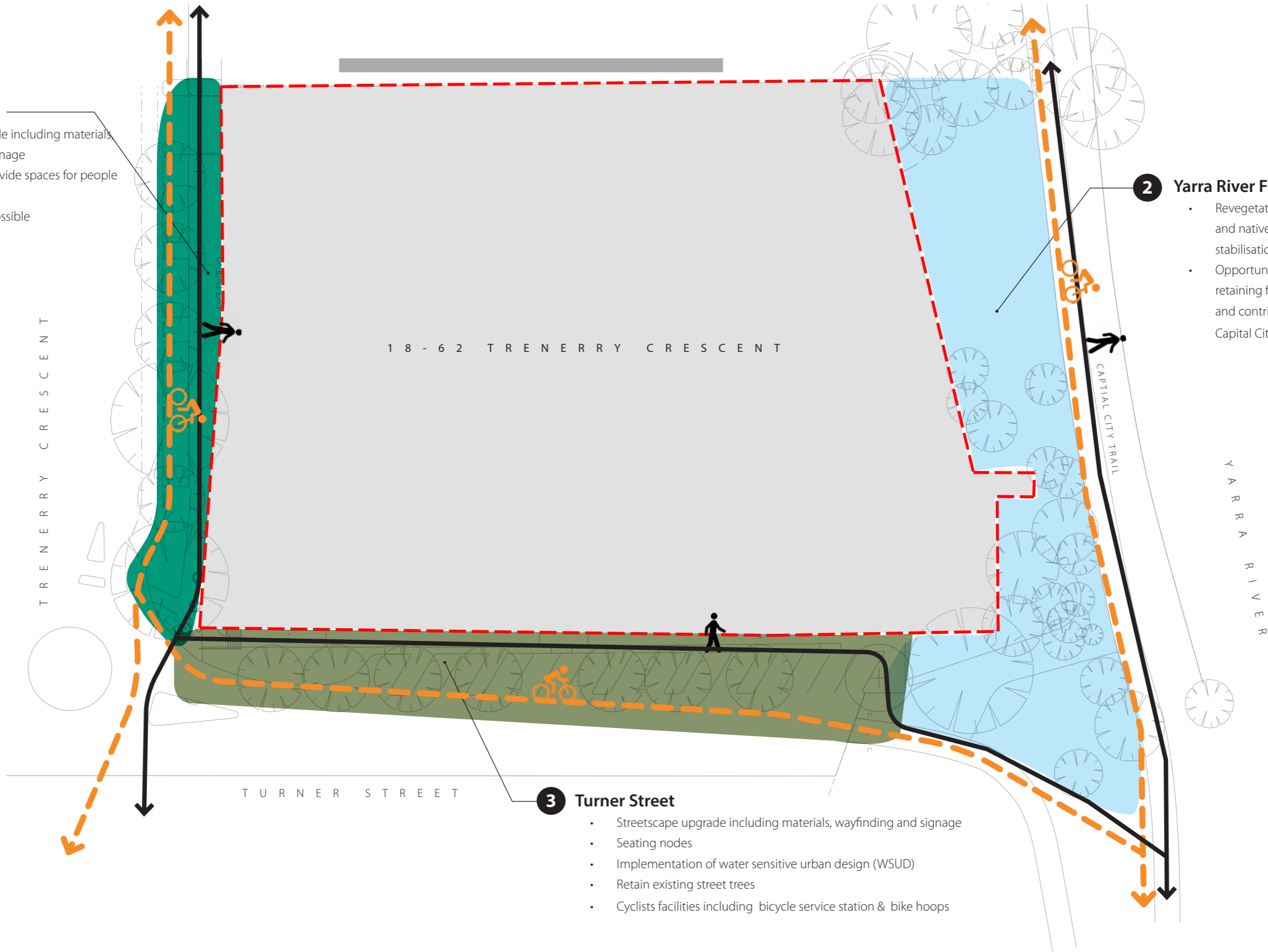
Prepared by Tract Consultants  
15-12-2017  
rev03



- 1 Trenerry Crescent**
- Streetscape upgrade including materials, wayfinding and signage
  - Opportunity to provide spaces for people to linger
  - Greening where possible
  - Bicycle parking

- 2 Yarra River Frontage**
- Revegetation with suitable indigenous and native species including embankment stabilisation
  - Opportunity to commission art on existing retaining façades that are site responsive and contribute to the art corridor along the Capital City Trail

- 3 Turner Street**
- Streetscape upgrade including materials, wayfinding and signage
  - Seating nodes
  - Implementation of water sensitive urban design (WSUD)
  - Retain existing street trees
  - Cyclists facilities including bicycle service station & bike hoops



# 1 Trenerry Crescent

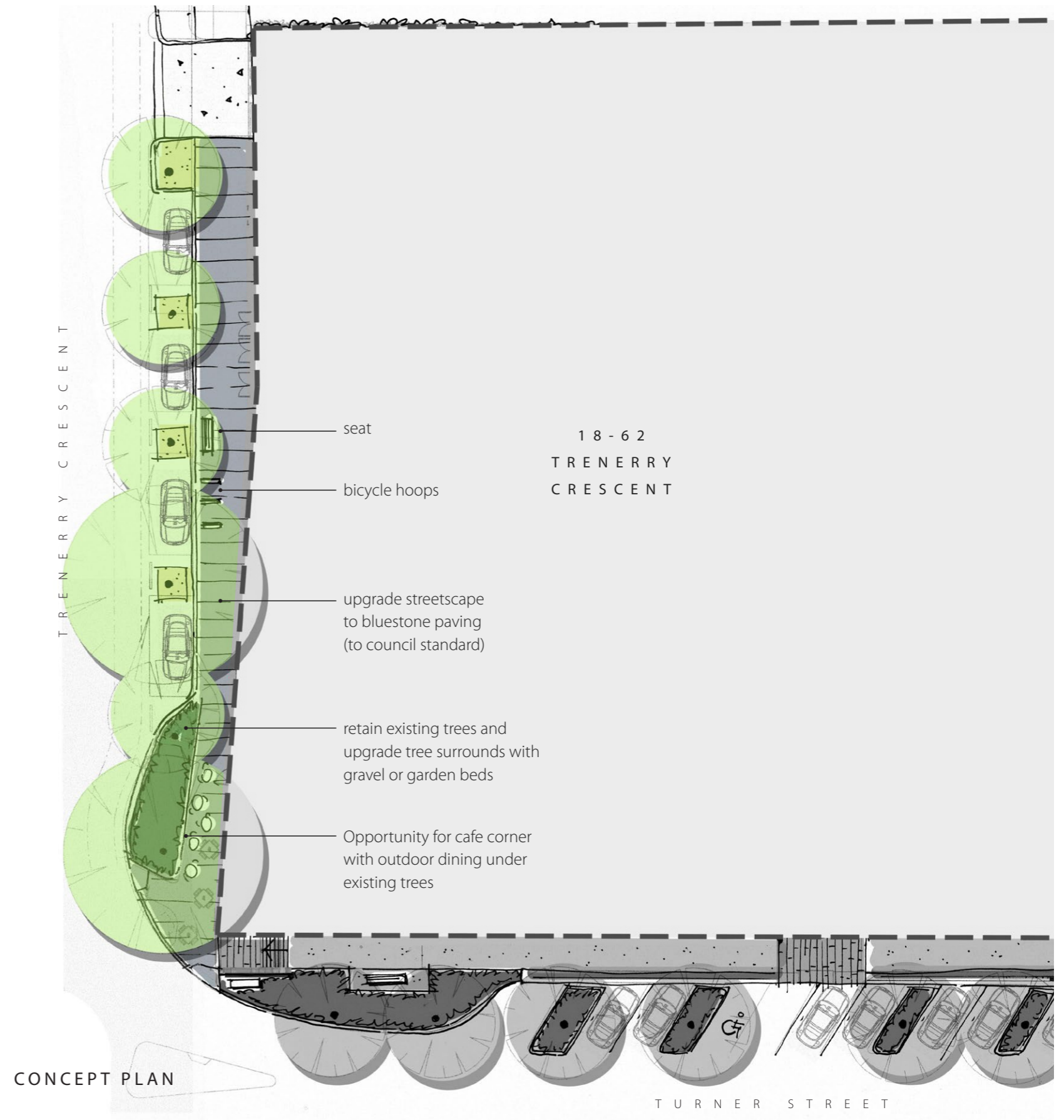
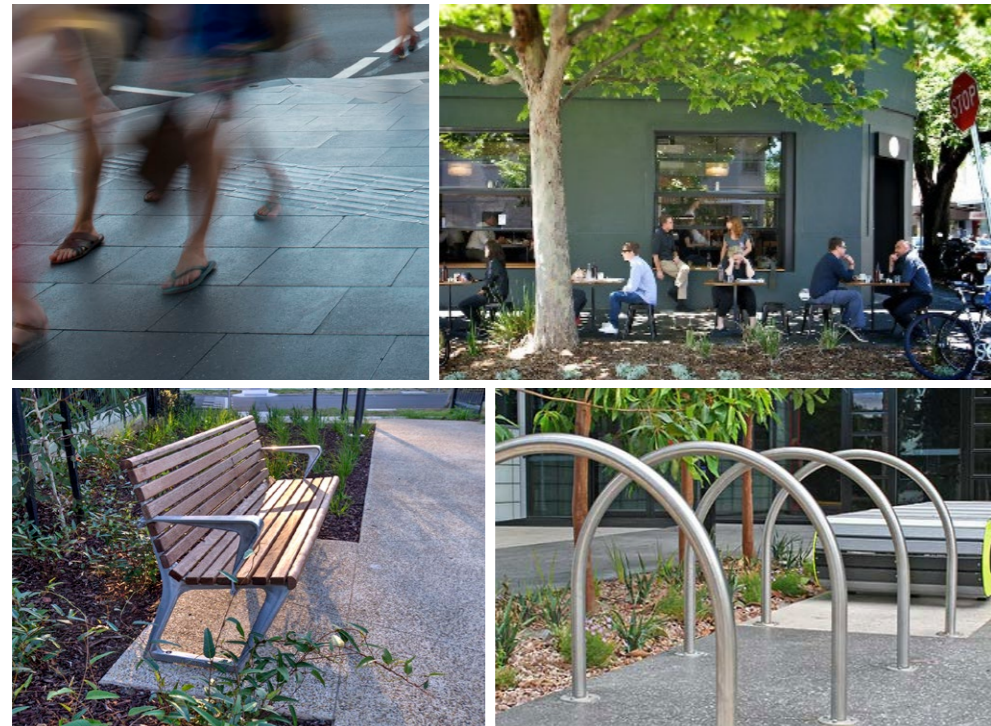
## EXISTING CONDITIONS

- Dilapidated materials & uneven surfaces
- Potential to activate streetscapes



## PUBLIC REALM OPPORTUNITIES

- Upgrade paving and achieve DDA where possible
- Retain existing street trees and revitalise planting
- Provide spaces for people stop and sit with street furniture
- opportunity for activation with a 'cafe corner'





## 2 Yarra River Frontage

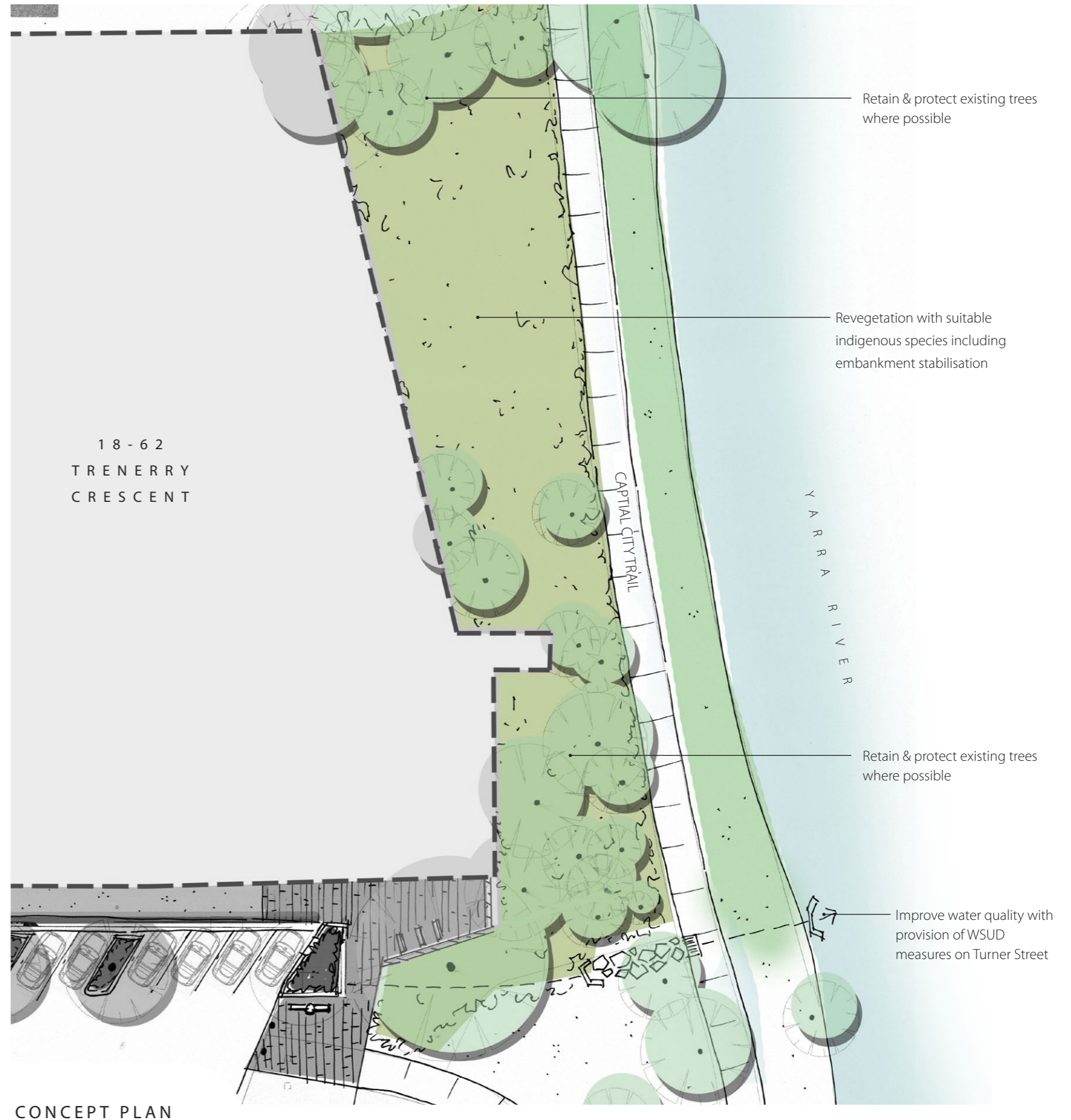
### EXISTING CONDITIONS

- Exposed retaining walls with graffiti
- Extensive weed infestations



### PUBLIC REALM OPPORTUNITIES

- Re-vegetate with suitable indigenous and native species
- Embankment stabilisation where required
- Opportunity for habitat creation with bird hides
- Opportunity for public art on exposed retaining walls





### 3 Turner Street

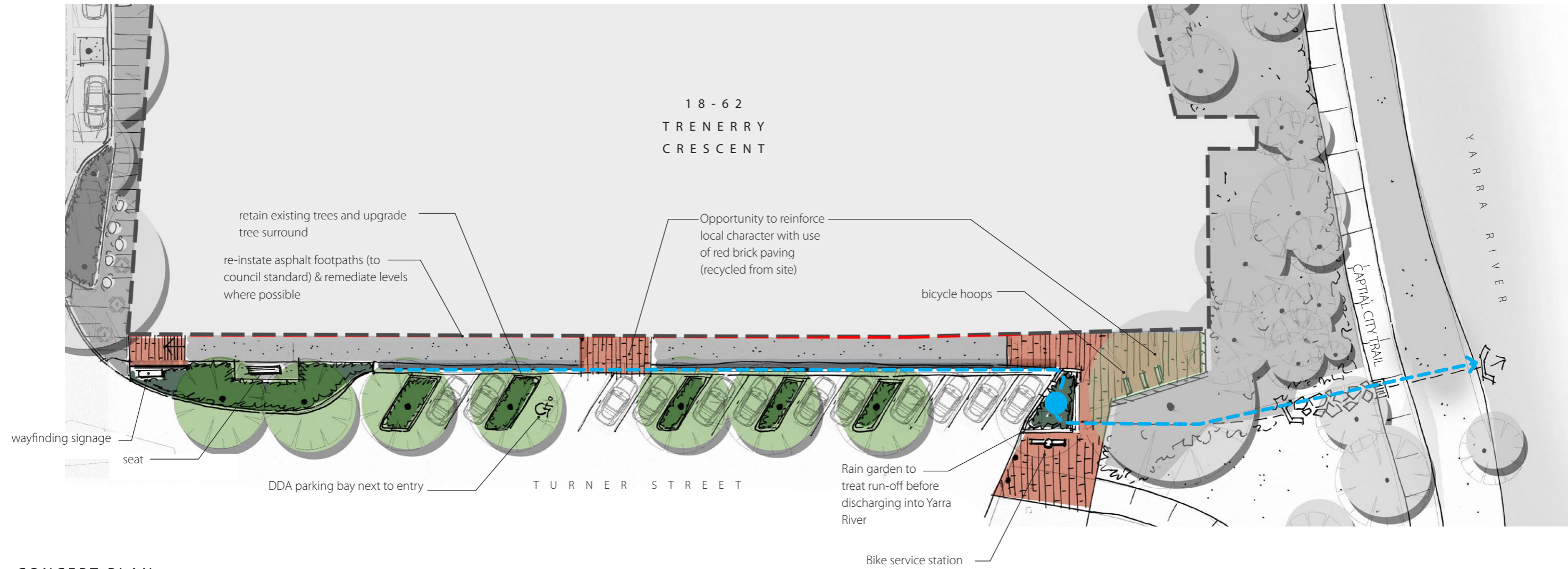
#### EXISTING CONDITIONS

- Poor pedestrian amenity
- poorly signed connection to the Capital City Trail



#### PUBLIC REALM OPPORTUNITIES

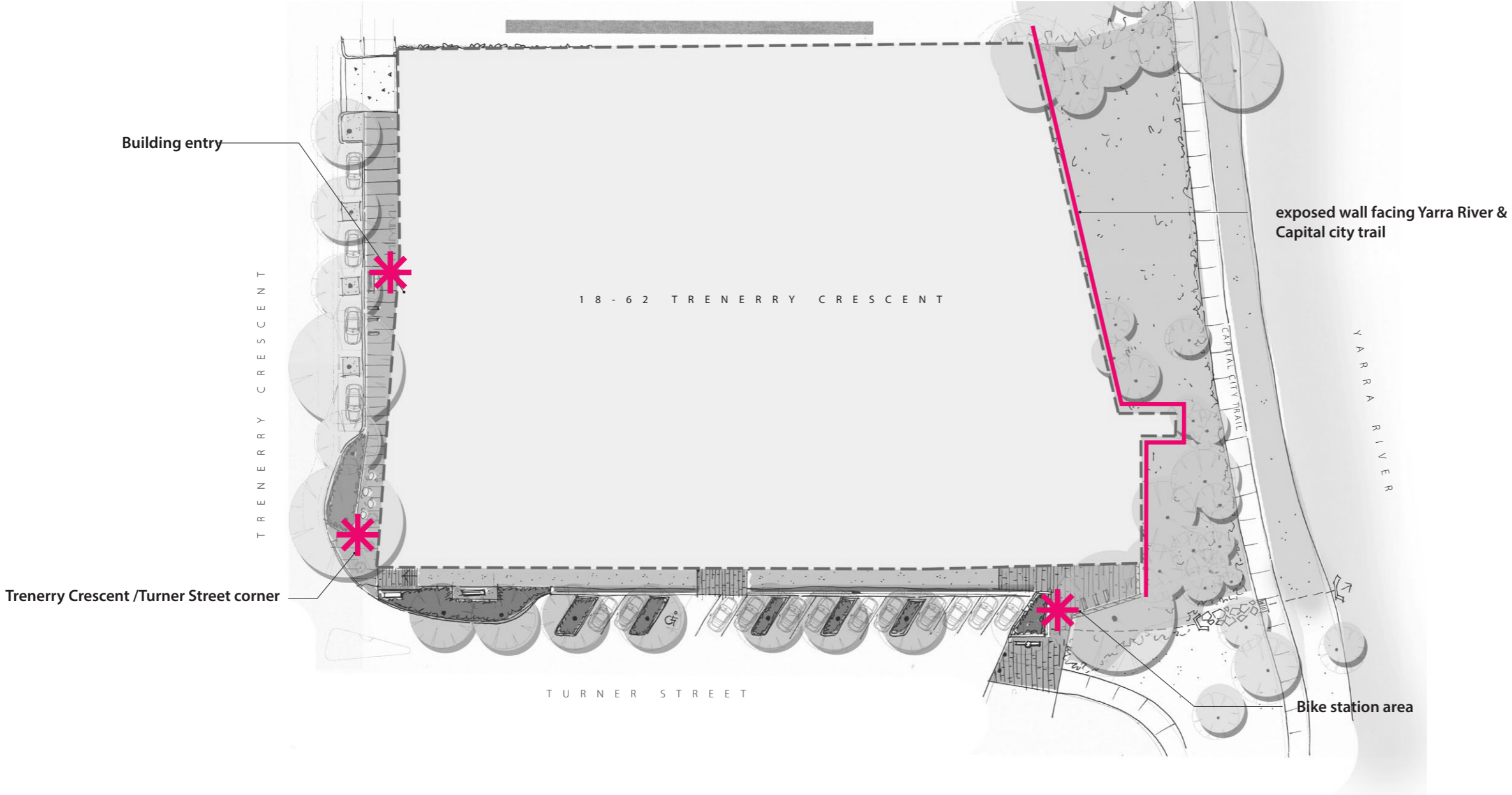
- Streetscape upgrade including materials, wayfinding and signage
- Cyclist facilities
- Run-off filtration into landscape feature



#### CONCEPT PLAN



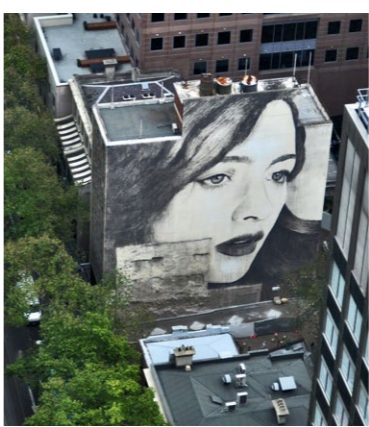
**Public Art Opportunities**



*Sculpture*



*Urban furniture*



*Wall murals*

