

PLANT LEGEND						
ID	Quantity	Latin Name	Common Name	Scheduled Size	Mature Height	Mature Spread
AIGI	10	<i>Allocausarina nana</i>	'Cousin It' Sheoak	20cm pot	0.15m	2m
DiRe	9	<i>Dichondra repens</i>	Kidney Weed	20cm pot	0.3 - 0.45m	0.3 - 0.6m



03 9077 5989  
 info@phillipwithers.com  
 www.phillipwithers.com

PROJECT

Smith & Leicester (K2LD)  
 421 Smith Street, Fitzroy,  
 Planting Plan  
 Project Number: 18024

DRAWING NO.

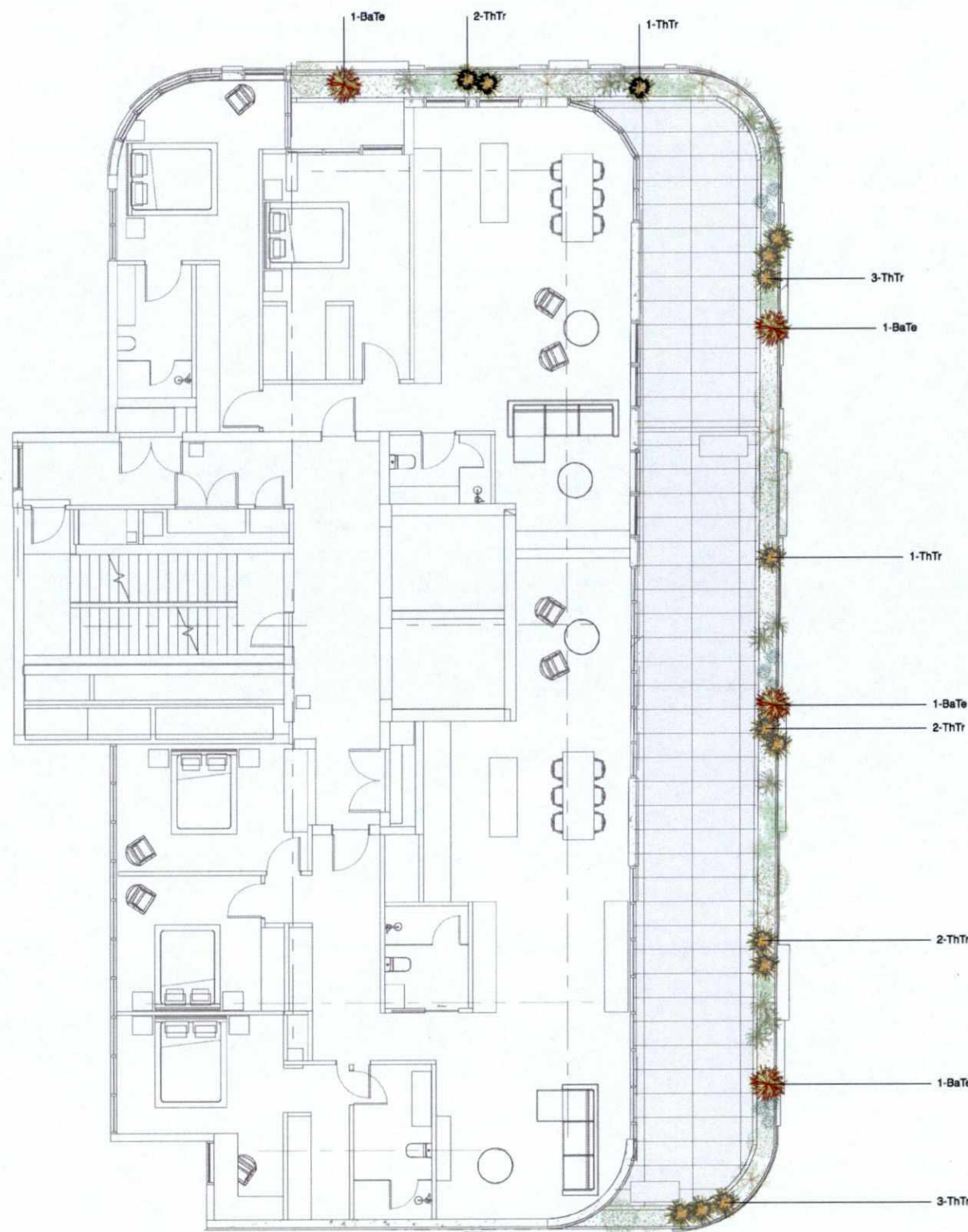
13/02/19  
 Drawn by: SM/CT  
 Review: B

REV	AMENDMENT	DATE	BY
A	SUBMISSION FOR REVIEW	08/02/19	SM
B	UPDATED BASE PLAN	13/02/19	CT

GENERAL NOTES  
 Not for construction. All built elements to be built to Australian standards. Builders / Contractors shall verify all dimensions before any work commences. Dimensions shown are nominal. Figured dimensions shall take precedence over scaled dimensions. Any discrepancies are to be made known to the architect's / designer's office prior to any work commencing on site. All shop drawings shall be submitted for review and manufacture shall not commence prior to the return of unamended shop drawings.

© PWLD Pty Ltd





PLANT LEGEND						
ID	Quantity	Latin Name	Common Name	Scheduled Size	Mature Height	Mature Spread
BaTe	4	Baloskion tetraphyllum	Zebra rush	20cm pot	1.2m	1m
ThTr	14	Themeda triandra	Kangaroo Grass	30cm pot	0.3-0.6m	0.3-0.6m



03 9077 5989  
 info@phillipwithers.com  
 www.phillipwithers.com

PROJECT  
 Smith & Leicester (K2LD)  
 421 Smith Street, Fitzroy,  
 Planting Plan  
 Project Number: 18024

DRAWING NO.  
 13/02/19  
 Drawn by: SM/CT  
 Review: B

REV	AMENDMENT	DATE	BY
A	SUBMISSION FOR REVIEW	08/02/19	SM
B	UPDATED BASE PLAN	13/02/19	CT

GENERAL NOTES  
 Not for construction. All built elements to be built to Australian standards. Builders / Contractors shall verify all dimensions before any work commences. Dimensions shown are nominal. Figured dimensions shall take precedence over scaled dimensions. Any discrepancies are to be made known to the architect's / designer's office prior to any work commencing on site. All shop drawings shall be submitted for review and manufacture shall not commence prior to the return of unamended shop drawings.  
 © PWD Pty Ltd

