

**REGISTER SEARCH STATEMENT (Title Search) Transfer of  
Land Act 1958**

Page 1 of 1

VOLUME 05383 FOLIO 588

Security no : 124072647777D  
Produced 29/06/2018 04:47 pm

**LAND DESCRIPTION**

Lot 1 on Title Plan 685099Q.  
PARENT TITLE Volume 03984 Folio 798  
Created by instrument 1361412 12/04/1928

**REGISTERED PROPRIETOR**

Estate Fee Simple  
Sole Proprietor  
1359 GORDON PROPERTIES PTY LTD of 89 HORNBY STREET WINDSOR VIC 3181  
AM982748J 01/08/2016

**ENCUMBRANCES, CAVEATS AND NOTICES**

CAVEAT AR061888K 25/05/2018  
Caveator  
CAM NO 5 PTY LTD ACN: 612318813  
Grounds of Claim  
AGREEMENT WITH THE FOLLOWING PARTIES AND DATE.  
Parties  
THE REGISTERED PROPRIETOR(S)  
Date  
12/02/2018  
Estate or Interest  
FREEHOLD ESTATE  
Prohibition  
ABSOLUTELY  
Lodged by  
HWL EBSWORTH LAWYERS  
Notices to  
MALIQ MAIDEEN of LEVEL 26 530 COLLINS STREET MELBOURNE VIC 3000

Any encumbrances created by Section 98 Transfer of Land Act 1958 or Section 24 Subdivision Act 1988 and any other encumbrances shown or entered on the plan set out under DIAGRAM LOCATION below.

**DIAGRAM LOCATION**

SEE TP685099Q FOR FURTHER DETAILS AND BOUNDARIES

**ACTIVITY IN THE LAST 125 DAYS**

NUMBER	STATUS	DATE
AR061888K (E) CAVEAT	Registered	25/05/2018

DOCUMENT END



# Imaged Document Cover Sheet

The document following this cover sheet is an imaged document supplied by LANDATA®, Land Use Victoria.

Document Type	<b>Plan</b>
Document Identification	<b>TP685099Q</b>
Number of Pages (excluding this cover sheet)	<b>1</b>
Document Assembled	<b>29/06/2018 16:49</b>

**Copyright and disclaimer notice:**

© State of Victoria. This publication is copyright. No part may be reproduced by any process except in accordance with the provisions of the Copyright Act and for the purposes of Section 32 of the Sale of Land Act 1962 or pursuant to a written agreement. The information is only valid at the time and in the form obtained from the LANDATA® System. The State of Victoria accepts no responsibility for any subsequent release, publication or reproduction of the information.

The document is invalid if this cover sheet is removed or altered.

TITLE PLAN	EDITION 1	TP 685099Q
------------	-----------	------------

<p><b>Location of Land</b></p> <p>Parish: AT RICHMOND PARISH OF JIKA JIKA</p> <p>Township:</p> <p>Section:</p> <p>Crown Allotment:</p> <p>Crown Portion: 6(PT)</p> <p>Last Plan Reference:</p> <p>Derived From: VOL 5383 FOL 588</p> <p>Depth Limitation: NIL</p>	<p><b>Notations</b></p> <p>ANY REFERENCE TO MAP IN THE TEXT MEANS THE DIAGRAM SHOWN ON THIS TITLE PLAN</p>
-------------------------------------------------------------------------------------------------------------------------------------------------------------------------------------------------------------------------------------------------------------------	------------------------------------------------------------------------------------------------------------

**Description of Land / Easement Information**

*All that piece of Land, delineated and coloured --*  
*red on the map in the margin being part of Crown Portion Six at Richmond Parish of--*  
*Jika Jika County of Bourke Together with a right of carriage way over the road ----*  
*colored brown on the said map - - - - -*

THIS PLAN HAS BEEN PREPARED FOR THE LAND REGISTRY, LAND VICTORIA, FOR TITLE DIAGRAM PURPOSES AS PART OF THE LAND TITLES AUTOMATION PROJECT

COMPILED: 13/11/2000  
 VERIFIED: B.H.

**COLOUR CODE**

- R = RED
- BR = BROWN

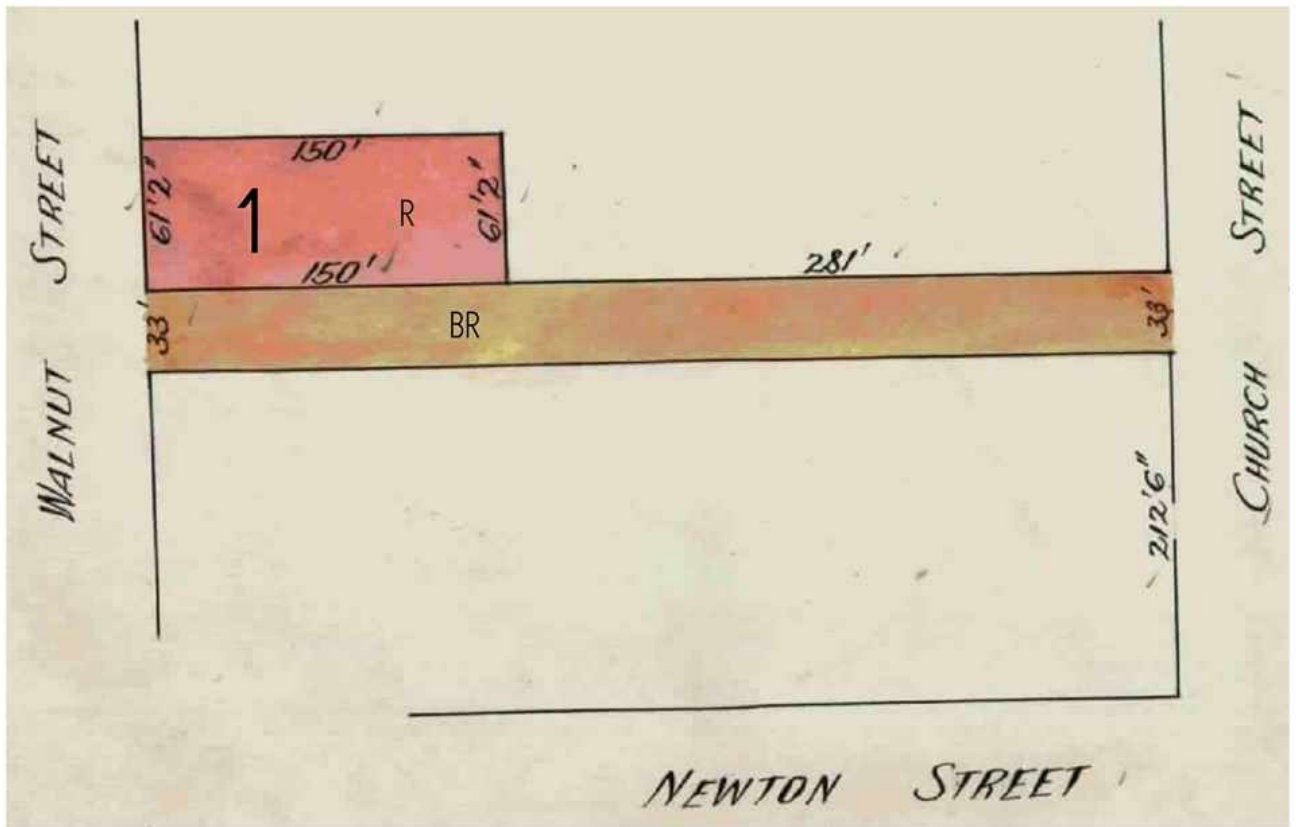


TABLE OF PARCEL IDENTIFIERS
WARNING: Where multiple parcels are referred to or shown on this Title Plan this does not imply separately disposable parcels under Section 8A of the Sale of Land Act 1962
PARCEL 1 = CP 6 (PT)

**REGISTER SEARCH STATEMENT (Title Search) Transfer of Land Act 1958**

VOLUME 01756 FOLIO 114

Security no : 124072647931L  
Produced 29/06/2018 04:51 pm

**LAND DESCRIPTION**

Lot 1 on Title Plan 548996A.  
PARENT TITLE Volume 01722 Folio 381  
Created by instrument C359772 16/11/1965

**REGISTERED PROPRIETOR**

Estate Fee Simple  
Sole Proprietor  
11 GORDON PTY LTD of 110 CUBITT STREET RICHMOND VIC 3121  
AN773830H 27/04/2017

**ENCUMBRANCES, CAVEATS AND NOTICES**

CAVEAT AR061853F 25/05/2018  
Caveator  
CAM NO 5 PTY LTD ACN: 612318813  
Grounds of Claim  
AGREEMENT WITH THE FOLLOWING PARTIES AND DATE.  
Parties  
THE REGISTERED PROPRIETOR(S)  
Date  
12/02/2018  
Estate or Interest  
FREEHOLD ESTATE  
Prohibition  
ABSOLUTELY  
Lodged by  
HWL EBSWORTH LAWYERS  
Notices to  
MALIQ MAIDEEN of LEVEL 26 530 COLLINS STREET MELBOURNE VIC 3000

Any encumbrances created by Section 98 Transfer of Land Act 1958 or Section 24 Subdivision Act 1988 and any other encumbrances shown or entered on the plan set out under DIAGRAM LOCATION below.

**DIAGRAM LOCATION**

SEE TP548996A FOR FURTHER DETAILS AND BOUNDARIES

**ACTIVITY IN THE LAST 125 DAYS**

NUMBER	CAVEAT	STATUS	DATE
AR061853F (E)	CAVEAT	Registered	25/05/2018

-----END OF REGISTER SEARCH STATEMENT-----

Additional information: (not part of the Register Search Statement)

Street Address: 11 GORDON STREET CREMORNE VIC 3121

DOCUMENT END

**REGISTER SEARCH STATEMENT (Title Search) Transfer of Land Act 1958**

VOLUME 02457 FOLIO 343

Security no : 124072647930M  
Produced 29/06/2018 04:51 pm

**LAND DESCRIPTION**

Lot 1 on Title Plan 548649X.  
PARENT TITLE Volume 01973 Folio 565  
Created by instrument C359772 16/11/1965

**REGISTERED PROPRIETOR**

Estate Fee Simple  
Sole Proprietor  
11 GORDON PTY LTD of 110 CUBITT STREET RICHMOND VIC 3121  
AN773830H 27/04/2017

**ENCUMBRANCES, CAVEATS AND NOTICES**

CAVEAT AR061853F 25/05/2018  
Caveator  
CAM NO 5 PTY LTD ACN: 612318813  
Grounds of Claim  
AGREEMENT WITH THE FOLLOWING PARTIES AND DATE.  
Parties  
THE REGISTERED PROPRIETOR(S)  
Date  
12/02/2018  
Estate or Interest  
FREEHOLD ESTATE  
Prohibition  
ABSOLUTELY  
Lodged by  
HWL EBSWORTH LAWYERS  
Notices to  
MALIQ MAIDEEN of LEVEL 26 530 COLLINS STREET MELBOURNE VIC 3000

Any encumbrances created by Section 98 Transfer of Land Act 1958 or Section 24 Subdivision Act 1988 and any other encumbrances shown or entered on the plan set out under DIAGRAM LOCATION below.

**DIAGRAM LOCATION**

SEE TP548649X FOR FURTHER DETAILS AND BOUNDARIES

**ACTIVITY IN THE LAST 125 DAYS**

NUMBER	CAVEAT	STATUS	DATE
AR061853F (E)	CAVEAT	Registered	25/05/2018

-----END OF REGISTER SEARCH STATEMENT-----

Additional information: (not part of the Register Search Statement)

Street Address: 11 GORDON STREET CREMORNE VIC 3121

DOCUMENT END



# Imaged Document Cover Sheet

The document following this cover sheet is an imaged document supplied by LANDATA®, Land Use Victoria.

Document Type	<b>Plan</b>
Document Identification	<b>TP548996A</b>
Number of Pages (excluding this cover sheet)	<b>1</b>
Document Assembled	<b>29/06/2018 16:52</b>

**Copyright and disclaimer notice:**

© State of Victoria. This publication is copyright. No part may be reproduced by any process except in accordance with the provisions of the Copyright Act and for the purposes of Section 32 of the Sale of Land Act 1962 or pursuant to a written agreement. The information is only valid at the time and in the form obtained from the LANDATA® System. The State of Victoria accepts no responsibility for any subsequent release, publication or reproduction of the information.

The document is invalid if this cover sheet is removed or altered.

TITLE PLAN		EDITION 1	TP 548996A
------------	--	-----------	------------

<p><b>Location of Land</b></p> <p>Parish: JIKA JIKA          Township:          Section:          Crown Allotment:          Crown Portion: 6 (PT)</p> <p>Last Plan Reference:          Derived From: VOL 1756 FOL 114          Depth Limitation: NIL</p>	<p style="text-align: center;"><b>Notations</b></p> <p>ANY REFERENCE TO MAP IN THE TEXT MEANS THE DIAGRAM SHOWN ON THIS TITLE PLAN</p>
----------------------------------------------------------------------------------------------------------------------------------------------------------------------------------------------------------------------------------------------------------------------------------	----------------------------------------------------------------------------------------------------------------------------------------

<p style="text-align: center;"><b>Description of Land / Easement Information</b></p> <p style="text-align: right;">ALL THAT piece of -</p> <p>land delineated and coloured red on the map in the margin being part of Crown- -          -Parish of Jika Jika-          Portion 6 / County of Bourke - Together with a right of carriage way over - - -          Gordon Street - - - - -</p>	<p>THIS PLAN HAS BEEN PREPARED FOR THE LAND REGISTRY, LAND VICTORIA, FOR TITLE DIAGRAM PURPOSES AS PART OF THE LAND TITLES AUTOMATION PROJECT</p> <p>COMPILED: 29/06/2000          VERIFIED: C.L.</p>
---------------------------------------------------------------------------------------------------------------------------------------------------------------------------------------------------------------------------------------------------------------------------------------------------------------------------------------------------------------------------------------------------------	-----------------------------------------------------------------------------------------------------------------------------------------------------------------------------------------------------------

**COLOUR CODE**  
R = RED

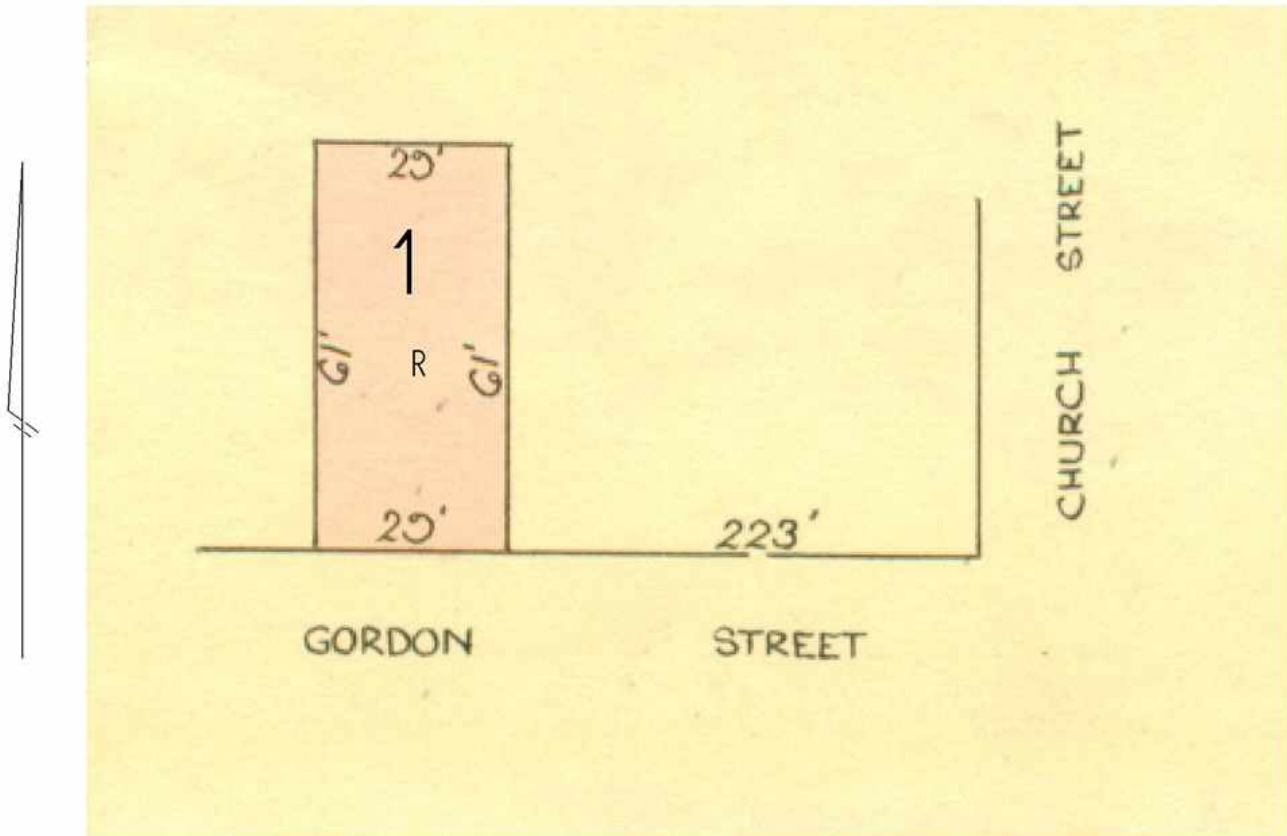


TABLE OF PARCEL IDENTIFIERS
WARNING: Where multiple parcels are referred to or shown on this Title Plan this does not imply separately disposable parcels under Section 8A of the Sale of Land Act 1962
PARCEL 1 = CP 6 (PT)



# Imaged Document Cover Sheet

The document following this cover sheet is an imaged document supplied by LANDATA®, Land Use Victoria.

Document Type	<b>Plan</b>
Document Identification	<b>TP548649X</b>
Number of Pages (excluding this cover sheet)	<b>1</b>
Document Assembled	<b>29/06/2018 16:52</b>

**Copyright and disclaimer notice:**

© State of Victoria. This publication is copyright. No part may be reproduced by any process except in accordance with the provisions of the Copyright Act and for the purposes of Section 32 of the Sale of Land Act 1962 or pursuant to a written agreement. The information is only valid at the time and in the form obtained from the LANDATA® System. The State of Victoria accepts no responsibility for any subsequent release, publication or reproduction of the information.

The document is invalid if this cover sheet is removed or altered.



TITLE PLAN	EDITION 1	TP 548649X
------------	-----------	------------

<p><b>Location of Land</b></p> <p>Parish: JIKA JIKA                  Township:                  Section:                  Crown Allotment:                  Crown Portion: 6(PT)</p> <p>Last Plan Reference:                  Derived From: VOL 2457 FOL 343                  Depth Limitation: NIL</p>	<p style="text-align: center;"><b>Notations</b></p> <p>ANY REFERENCE TO MAP IN THE TEXT MEANS THE DIAGRAM SHOWN ON THIS TITLE PLAN</p>
---------------------------------------------------------------------------------------------------------------------------------------------------------------------------------------------------------------------------------------------------------------------------------------------------------------------------------	----------------------------------------------------------------------------------------------------------------------------------------

<p style="text-align: center;"><b>Description of Land / Easement Information</b></p> <p style="text-align: center;"><b>ALL THAT piece of land delineated</b></p> <p><b>and coloured red on the map in the margin being part of Crown Portion 6 Parish of- Jika Jika County of Bourke - Together with a right of carriage way over Gordon - Street - - - - -</b></p>	<p>THIS PLAN HAS BEEN PREPARED FOR THE LAND REGISTRY, LAND VICTORIA, FOR TITLE DIAGRAM PURPOSES AS PART OF THE LAND TITLES AUTOMATION PROJECT</p> <p>COMPILED: 30/06/2000                  VERIFIED: A.D.</p>
---------------------------------------------------------------------------------------------------------------------------------------------------------------------------------------------------------------------------------------------------------------------------------------------------------------------------------------------------------------------	-------------------------------------------------------------------------------------------------------------------------------------------------------------------------------------------------------------------

**COLOUR CODE**  
R = RED

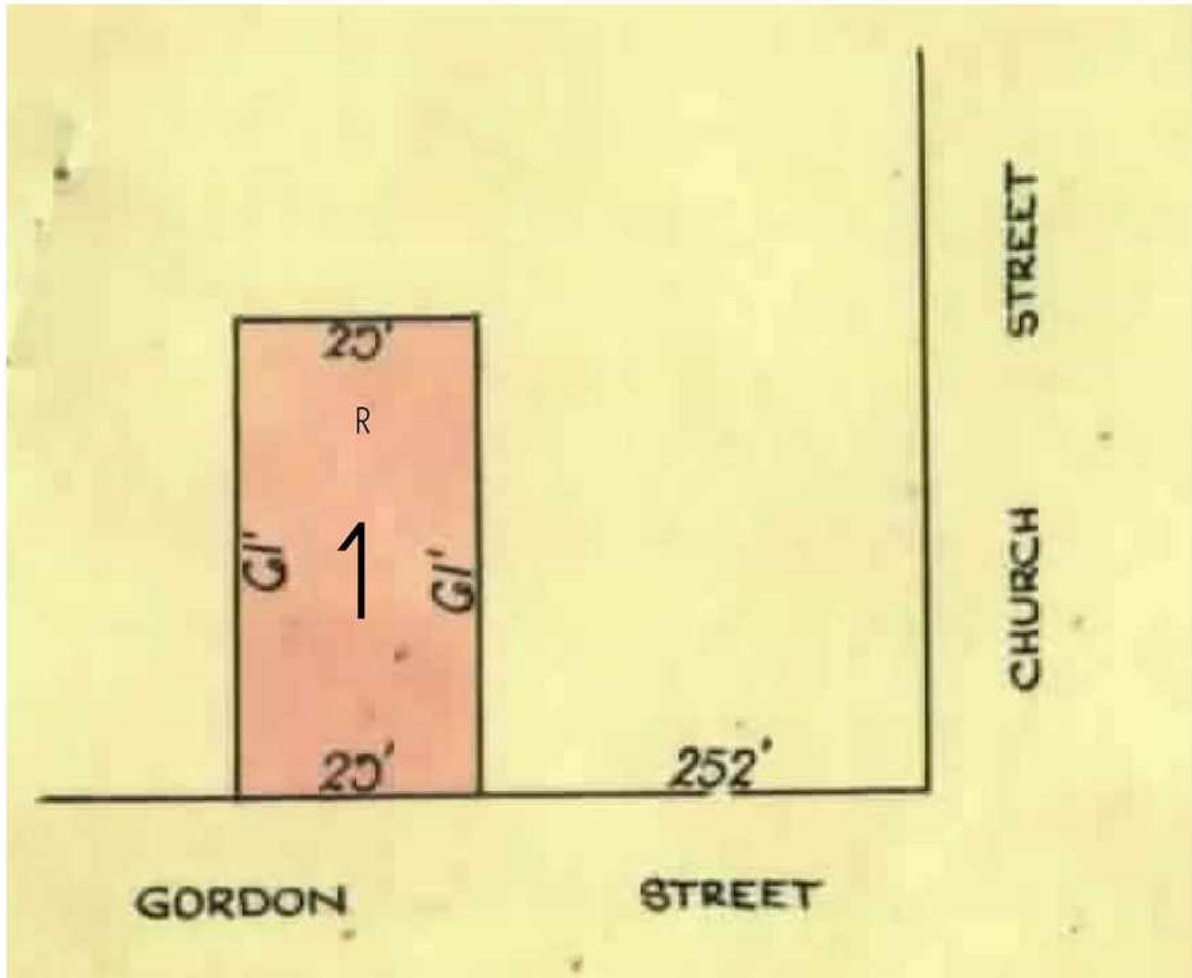


TABLE OF PARCEL IDENTIFIERS
WARNING: Where multiple parcels are referred to or shown on this Title Plan this does not imply separately disposable parcels under Section 8A of the Sale of Land Act 1962
PARCEL 1 = CP 6 (PT)