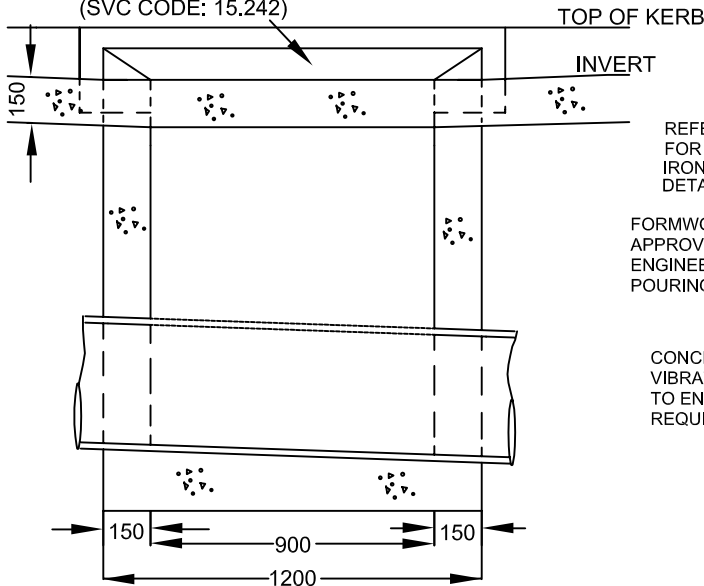


SHERBROOKE PRECAST LINTEL  
CHARCOAL COLOUR ( SVC CODE :- 15.375)  
OR CHARCOAL COLOUR FITZROY  
LINTEL FOR 300 KERB STONES  
(SVC CODE: 15.242)

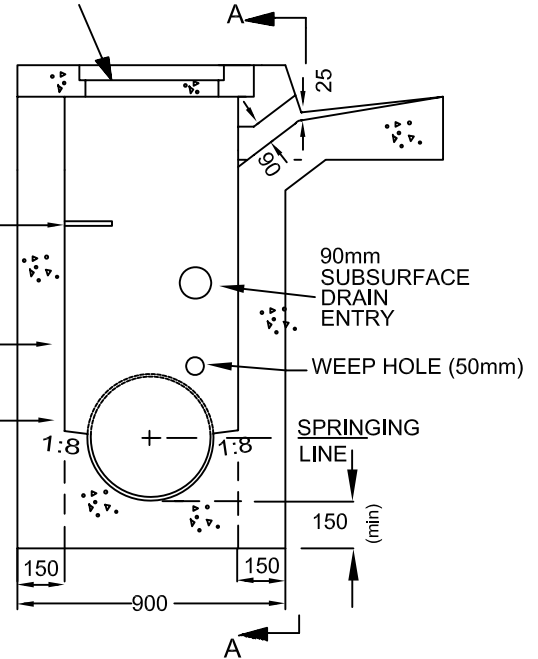
1200\*750 CHARCOAL COLOUR  
WITH INVERT LID.



REFER YSD13  
FOR STEP  
IRONS/LADDERS  
DETAILS

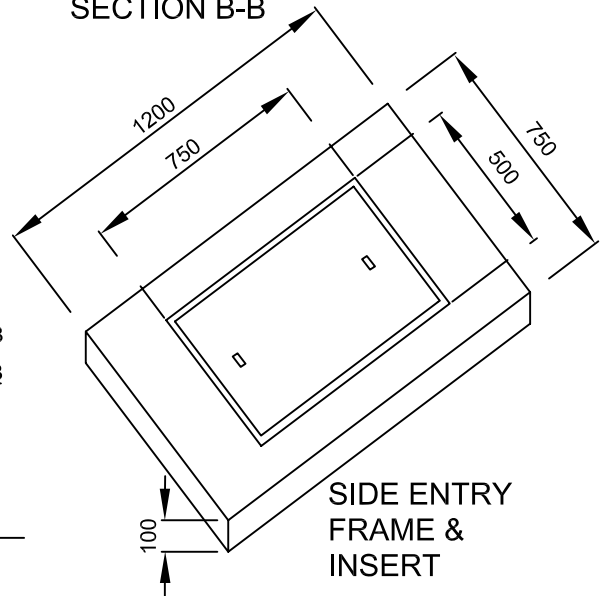
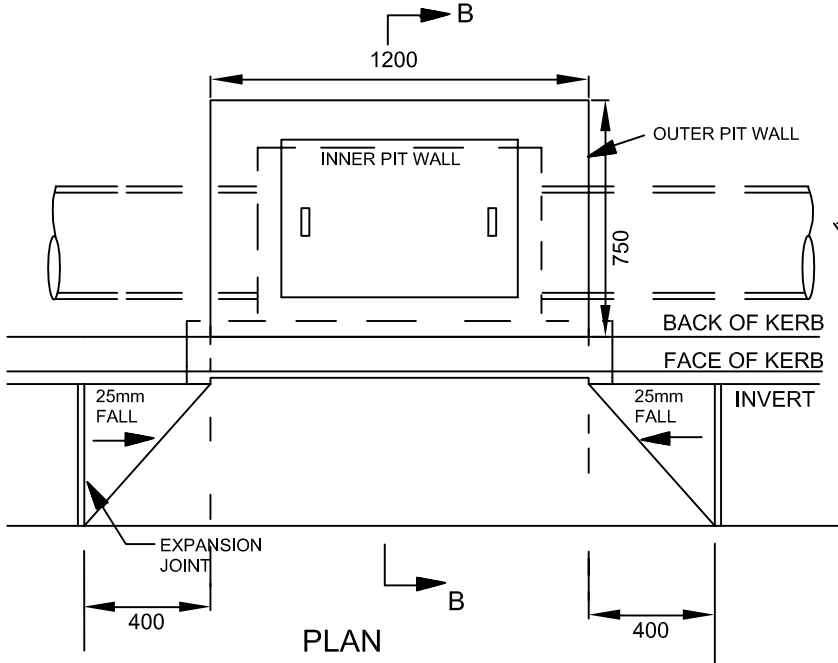
FORMWORK TO BE  
APPROVED BY  
ENGINEER BEFORE  
POURING CONCRETE

CONCRETE TO BE  
VIBRATED IN PITS  
TO ENGINEERS  
REQUIREMENTS



SECTION A-A

SECTION B-B



### GENERAL NOTES

1. ALL CONCRETE SHALL BE F'c 25Mpa AT 28 DAYS.
2. PITS DEEPER THAN 750mm SHALL BE FITTED WITH REFER TO STD YSD13 FOR FURTHER DETAILS. GALVANIZED STEP IRONS ( SPACE @ 300mm C.T.S)
3. THE FLOOR OF THE PIT SHALL BE FORMED UP TO AT LEAST THE SPRINGING LINE.
4. CONCRETE TO BE VIBRATED IN PITS TO ENGINEER SATISFACTION.
5. CONCRETE TO BE POURED INTO PITS DIRECTLY OUT OF SUPPLY VEHICLES.
6. BEDDING MATERIAL SHALL BE 100mm COMPACTED THICKNESS OF CLASS 2 C.R.
7. F72 REINFORCEMENT IN WALLS OVER 2m DEEP.
8. GRATE PERPENDICULAR TO KERB AND CHANNEL.
9. ALL LINTELS TO BE CHARCOAL COLOUR.
10. ALL PIT SURROUNDS TO BE CHARCOAL COLOUR.
11. S.V.C. P/L PRODUCT CODE FOR THE COVER AND LID IS 14.070 OR APPROVED EQUIVALENT.

### Yarra Standard: YSD17 Drawing Title:

SIDE ENTRY PIT WITH NON VEHICLE  
LOADING COVER

Scale at A4 N.T.S  
Updated 29/11/07

