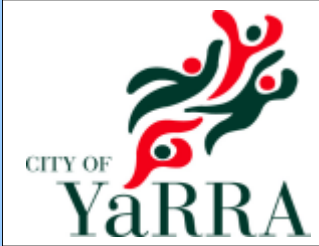


Proposed Public Toilet Facility

Corner Brunswick Street & Westgarth Street Fitzroy
Proposed Construction: 2009 / 2010

City of Yarra

PO Box 168
Richmond 3121



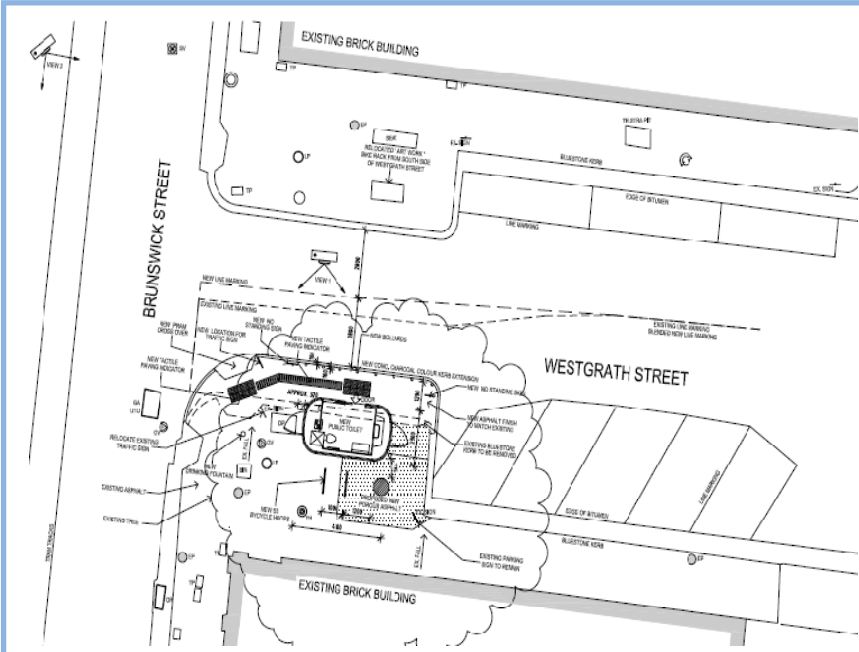
Existing Streetscape Photos



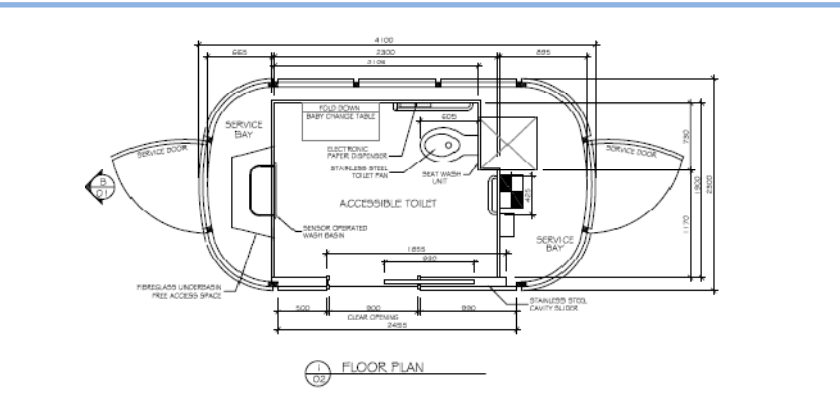
Proposed Streetscape Photos Showing the New Public Toilet Facility



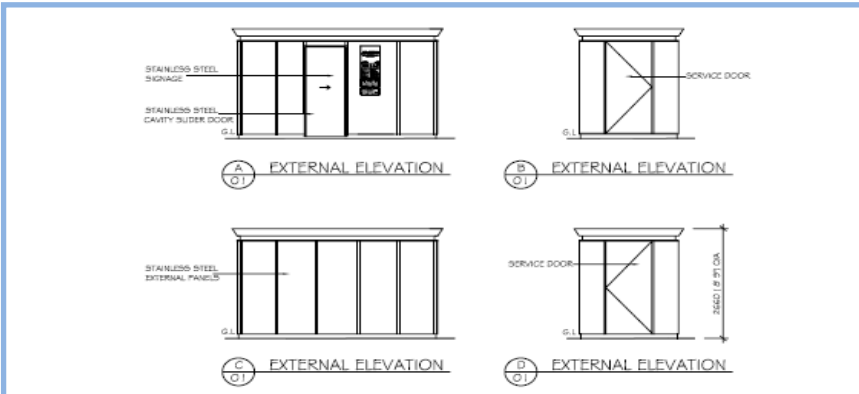
Aerial Photo of the Proposed Site



Proposed Location Plan



Floor Plan of the Proposed Public Toilet Facility



Elevations of the Proposed Public Toilet Facility

Public Toilet Facilities

There has been increasing community concern about the apparent lack of public toilet facilities in key shopping precincts, business activity centres and high profile public activity areas where people tend to congregate or pass through. Council has been receiving, collating and responding to petitions and correspondence from the community and businesses about the provision of public toilet facilities in these key areas. In response, Council proposes to strategically locate new public toilet facilities throughout the municipality to continue to provide this vital service to the community. The individual sites have been selected in these areas based on the criteria that are listed on this sheet.

All of the new facilities are proposed to provide a 24/7 public service, subject to further consultation with the community and businesses and the planning permit application process. The opening hours could be restricted to daylight trading hours only in some locations by planning permit or other conditions. The proposed facilities in these areas would provide much needed amenities for all members of the community including residents, ratepayers, shoppers, visitors, and people with disabilities, senior citizens, families with young children, pedestrians and cyclists who frequent these areas and require access to suitable clean, well maintained, safe and accessible facilities.

The proposed facilities would be similar in design, function and appearance to the facility that is installed in Kerr Street, near the intersection with Smith Street, in Fitzroy. The proposed design is a unisex, fully accessible, automated and self cleaning model.

Public toilet facilities that are similar in function and appearance have a number of social benefits including;

- Maintaining the consistency of aesthetics and streetscape appearance.
- Maintaining the consistency of performance, safety, maintenance, cleanliness and operation of these facilities.
- People and tourists visiting these areas can easily identify these facilities when they see them, as they are unique in appearance and would all look and function the same regardless of which area of the municipality people are shopping in or are visiting.
- People would know and trust these facilities to be safe, secure, clean and well maintained.

Criteria for the Selected Sites

- Located in a key shopping precinct, business activity centre or high profile public activity area.
- Potential for 24/7 use or high use on weekdays, weeknights and weekends.
- Located adjacent to an existing blank wall or similar streetscape feature
- Not located directly in front of residences or main shop front display window.
- Interconnected and aligned with existing public transport system.
- In an area of main pedestrian route and activity.
- In an area of bicycle route.
- Not located within a comfortable walking distance of 500M or maximum 10 mins walking time from an existing public toilet facility.
- Potential to adequately address public safety and public amenity issues through design and construction.
- Site area can be easily and economically modified to provide safe access for people of all abilities.
- Site has a suitable area nearby for the provision of a designated car bay for people with disabilities, bicycle parking and drinking fountain.
- Site has existing street lighting or potential for new street lighting to be provided at minimal cost.
- Site has existing street trees which can be retained.
- Site has existing services in the area including drainage, main sewer, main water and power supply.

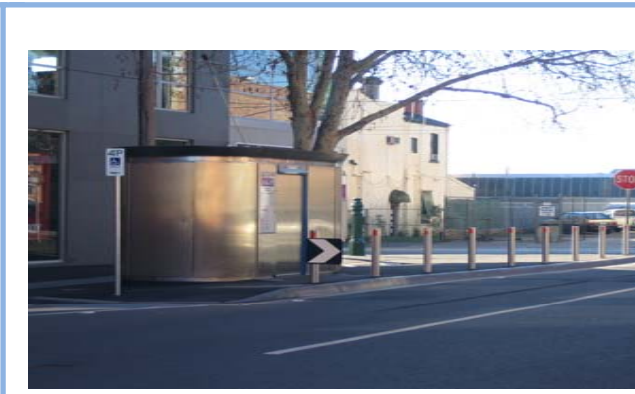
Further Information

Full size plans, drawings & photos are available for viewing on Council's website: www.yarracity.vic.gov.au

Contacts

Paul Usatov 9205 5758
Infrastructure Services Branch
E-mail: Paul.Usatov@yarracity.vic.gov.au

Helen Ruddell 9205 5303
Economic Development Branch
E-mail: Helen.Ruddell@yarracity.vic.gov.au



Photos of a Completed Public Toilet Facility in Kerr Street Fitzroy