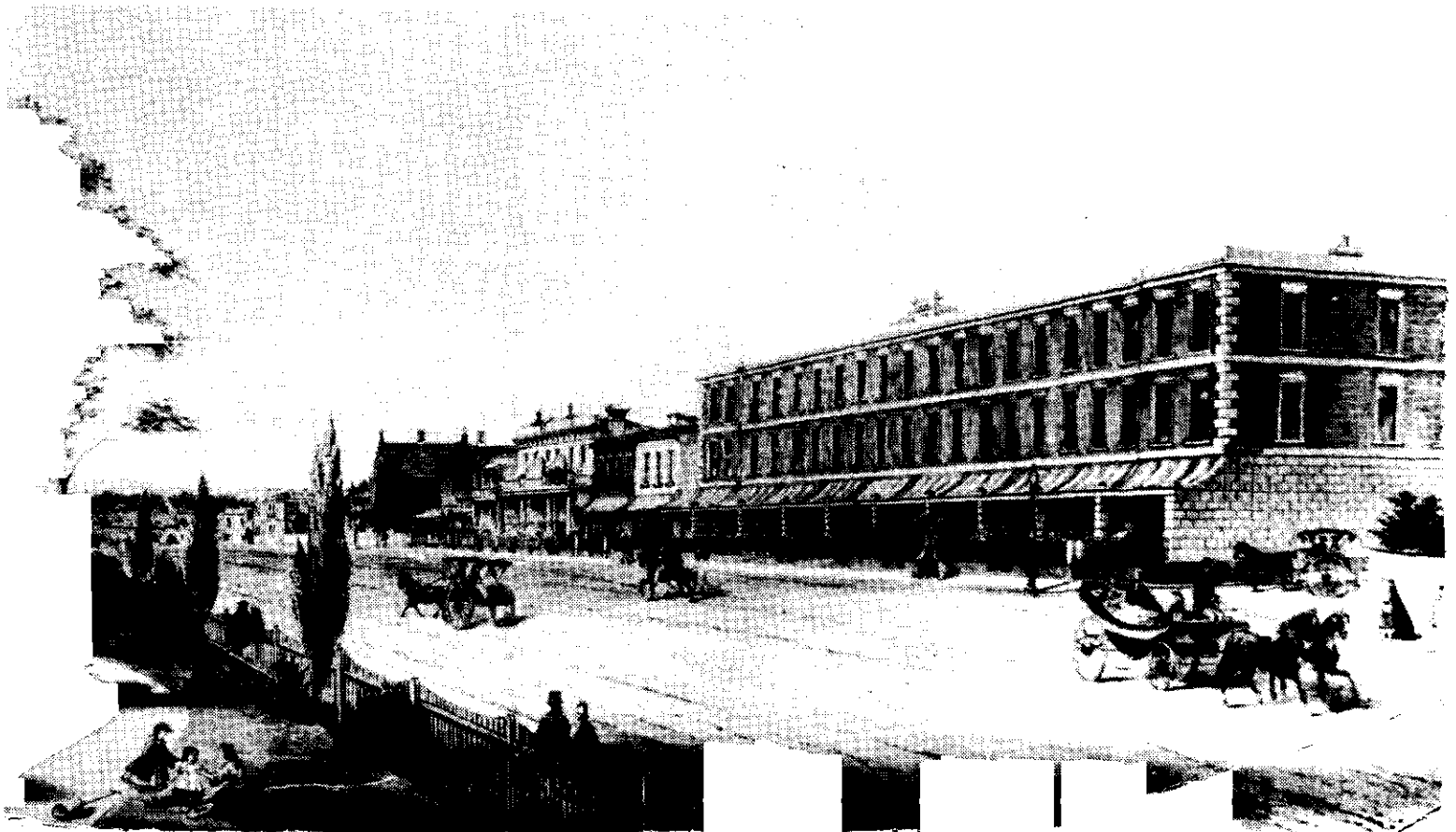


SOUTH FITZROY CONSERVATION STUDY

prepared by Jacobs Lewis Vines Architects in conjunction with Dr. M.B. Lewis and the Fitzroy Urban Planning Office. March 1979.



SOUTH FITZROY CONSERVATION STUDY

Commissioned by

the

Fitzroy City Council

and the

Historic Buildings Preservation Council

prepared by

Jacobs Lewis Vines Architects

in conjunction with:

Dr. Miles B. Lewis

and the

Fitzroy Urban Planning Office

March 1979

ACKNOWLEDGEMENTS

Many individuals have contributed to the South Fitzroy Conservation Study. The Fitzroy City Council and its officers were generous, with their assistance, in particular Harry Bechervaise the Fitzroy Urban Planner, who provided direction, and Roz Hansen and Robin Williams from the Urban Planning Office who assisted throughout the Study. The Steering Committee members, Councillor John Courmadias and Gordon Loader provided constant feedback and guidance.

Sub-Consultant, Dr. Miles Lewis greatly contributed to the final form and content of the report and his constant enthusiasm during the course of the study is gratefully acknowledged.

Assistance was gratefully received from the following bodies and persons:

The Urban Conservation Advisory Committee of the Fitzroy Council-in particular for the valuable ratebook searches

Mr. Winston Burchett, Historian - for assistance with use of the Melbourne City Council Building Register Book

Mr. Holt, A.N.Z. Bank archivist

Mr. Mitchell, National Bank Archivist, and Mr. Wilson, National Bank Premises Department.

Mr. Gordon Loader, Department of Construction, Victoria/Tasmania Region.

Mr. Frank Strahan, University of Melbourne Archivist .

Dr. Carlotta Kellaway, National Trust of Australia (Victoria)

Elizabeth Vines, March 1979.

STUDY TEAM

Elizabeth Vines: Jacobs Lewis Vines Architects

Dr. Miles Lewis: Sub-consultant

Roz Hansen: Fitzroy Urban Planning Office

Robin Williams: Fitzroy Urban Planning Office

with direction from

Harry Bechervaise: Fitzroy Urban Planning Office

Typing: Typists from the Fitzroy Town Hall in particular Anne Smith

CONTENTS:

PART ONE:	INTRODUCTION AND RECOMMENDATIONS	
	ACKNOWLEDGEMENTS	
	STUDY TEAM	
	LIST OF ILLUSTRATIONS	PAGE
1.1	Introduction and Objectives	1
1.2	Definition of Study Area	2
	Map 1 Study Area	
1.3	Summary of Recommendations:	2
1.3.1	Buildings recommended for addition to or retention on the Historic Buildings Register	2
1.3.2	Summary of recommendations regarding all buildings investigated	2
1.3.3	Areas of special significance recommended for protection using the provisions of Clause 8B of the Town and Country Planning Act (Third Schedule)	4
1.3.4	Areas recommended to receive special consider- ation by the City of Fitzroy	4
1.3.5	Areas recommended for listing on the Register of the National Estate	5
1.4	Historical Background - The development of South Fitzroy	6
PART TWO:	CONSERVATION AREAS	
2.1	Introduction	21
2.1.1	Legislation available for the protection of conservation areas and streetscapes.	21
2.2	Area Survey Method	24
2.2.1	Priority A areas	24
2.2.2	Priority B areas	26
2.2.3	General note on the restoration and reconstruction of verandahs and shopfronts.	26
2.2.4	Selection Criteria for areas and streetscapes	27

2.3 CONSERVATION AREAS:

Map 1: Conservation Areas

A1	Nicholson Street precinct	30
A2	Brunswick/Gertrude Street Precinct	35
A3	Napier Street South Precinct	41
A4	George Street South Precinct	43
A5	Gore Street South Precinct	44
A6	Gore Street Precinct	47
A7	Brunswick Street Precinct	48
A8	Greeves/Mahoney Street Precinct	52
A9	Bell Street Precinct	55
A10	Cremorne/Garfield Street Precinct	57
A11	Moor Street West Precinct	58
A12	Blanche Terrace Streetscape	60
A13	Gertrude/George Street Streetscape	61
A14	Gertrude/George Street Streetscape	62
A15	Napier Street/Uniting Church Streetscape	63
A16	Webb Street Streetscape	63
A17	Smith Street Streetscape (i)	64
A18	Smith Street Streetscape (ii)	64
A19	Smith Street Streetscape (iii)	65
A20	Smith Street Streetscape (iv)	66
A21	Johnston Street Streetscape	67
A22	Napier Street North Streetscape	67
A23	Kerr Street Streetscape	68
A24	Nicholson Street Streetscape	69
A25	Spring Street/Argyle Street Streetscape	69
A26	King William Street Streetscape	70
B1	Gertrude Street West Precinct	71
B2	Gertrude Street East Precinct	71
B3	Smith Street Precinct	72
B4	Gore Street Precinct	73
B5	George Street Precinct	73
B6	St. Marks Precinct	74
B7	Town Hall Precinct	75
B8	Napier Street Precinct	75
B9	George Street Precinct	76
B10	Gore Street Precinct	76
B11	George Street North Precinct	77
B12	Napier Street North Precinct	77
B13	Cecil Street Precinct	78
B14	Westgarth Street Precinct	78
B15	Brunswick Street North Precinct	79
B16	Argyle/Fitzroy Street Precinct	80
B17	Victoria Street East Precinct	80
B18	Greeves Street East Precinct	81
B19	Brunswick Street Precinct	81
B20	Moor Street/Fitzroy Street Precinct	82
B21	King William Street Precinct	82
B22	Brunswick Street Streetscape	83
B23	Brunswick/Palmer Street Streetscape	83
B24	James Street Streetscape	83
B25	Fitzroy Street Streetscape	84
B26	Palmer Street Streetscape	84
B27	Gertrude Street Streetscape	84
B28	Victoria Parade Streetscape	85
B29	Johnston Street Streetscape	85
B30	George Street North Streetscape	85

	PAGE
B31 Alexandra Parade Streetscape	86
B32 Nicholson Street North Streetscape	86
B33 Kerr Street West Streetscape	86
B34 Henry Street Streetscape	87
B35 Johnston Street Streetscape	87
B36 Victoria Street Streetscape	87
PART THREE: BUILDING INVENTORY	
3.1 Buildings worthy of investigation:	89
3.1.1 Background	89
3.1.2 Summary of Category A buildings investigated by the consultants and others	91
3.1.3 List of A category buildings investigated by the consultants as part of this study	95
3.1.4 Category B Buildings worthy of future investigation	97
3.1.5 Legislation for protection of buildings	99
3.1.6 Building Selection Criteria	101
3.1.7 Card Index	102
3.2 Building Identification and Analysis	104
3.2.1 Explanation of standard building description format	104
3.2.2 Building Inventory	105
BIBLIOGRAPHY	170
APPENDIX 1: Summary of Buildings in South Fitzroy Classified/Recorded by the National Trust of Australia (Victoria). Registered on the Historic Buildings Register and Registered on the Register of the National Estate.	175
APPENDIX 2: Illustrations	178
APPENDIX 3: Glossary of Architectural Terms	183
APPENDIX 4: Index of Identities	189

LIST OF ILLUSTRATIONS:

Front Cover	Nicholson Street looking north c1863 Coloured Litho LaTrobe Collection, State Library of Victoria	
1.	Melbourne and Suburbs compiled by James Kearney Draughtsman 1855. Map Library, State Library of Victoria.	
2.	Stages in the subdivision of Fitzroy and East Collingwood 1838- 1854 from B. Barrett. <i>The Inner Suburbs : The Evolution of an Industrial Area</i> M.U.P. 1971.	7
3.	Detail of South Fitzroy from "Hobson Bay and River Yarra Leading to Melbourne...Surveyed by Commander H.L. Cox R.N. 1864" Map Library, State Library of Victoria.	10
4.	Royal Terrace. 50-68 Nicholson Street c1868. LaTrobe Collection, State Library of Victoria.	13
5.	Saint Marks Church and School. Undated, LaTrobe Collection, State Library of Victoria.	13
6.	George Wilson & Co., Webb Street, 1862. (Demolished) LaTrobe Collection, State Library of Victoria.	16
7.	John Cramp, Butcher, 119 Brunswick Street, 1866 (Demolished), LaTrobe Collection, State Library of Victoria	16
8.	58 Napier Street.	20
9.	261-275 Brunswick Street.	20
10.	43-57 Bell Street.	20
11.	162-166 Nicholson Street	20
12.	Belvedere Hotel, Brunswick Street (now Eastern Hill Hotel) c1861 LaTrobe Collection, State Library of Victoria.	36
13.	Fitzroy from Parliament House. Nettleton Original, undated. LaTrobe Collection, State Library of Victoria.	36
14.	39-49 Brunswick Street c1860. LaTrobe Collection, State Library of Victoria.	88
15.	21 Brunswick Street c1860. LaTrobe Collection State Library of Victoria.	107
16.	Champion Hotel before arcades infilled and ground floors altered c1976-77 from Daws & McAllester "Hotels with Corner Towers in Fitzroy" B.Arch. University of Melbourne 1968.	109
17.	Brunswick Street looking south c1900. LaTrobe Collection, State Library of Victoria.	114
18.	Fitzroy Post Office c1917. Commonwealth Department of Construction Archives.	117

LIST OF ILLUSTRATIONS (CONTD.)

PAGE

- 19., 20.,
& 21. Original drawings, Fitzroy Post Office dated 12.12.1882
Commonwealth Department of Construction Archives. 117
22. Johnston Street looking west c1930 LaTrobe Collection,
State Library of Victoria. 136
23. All Saints Catholic Church 1893 from *Brunswick Street
Wesleyan Sunday School Jubilee Records*. 1893 pl. 137
24. Fitzroy Cable Tram Engine House. Original drawing dated
22.5.1886. Held by the M.M.T.B. 146
25. Fitzroy Cable Train Engine House, Original drawing (undated)
Elevation of Corner Signal Box. Held by the M.M.T.B. 147
26. Convent of Mercy Chapel, Nicholson Street from *Annals of
the Catholic Church in Victoria*. LaTrobe Collection,
State Library of Victoria, undated. 151
27. Convent of Mercy, Nicholson Street north end view of chapel.
Undated. Source : Ko, K and Wu, F "Convent of Mercy...
Fitzroy" B. Arch, University of Melbourne 1968. 151
28. Convent of Mercy: Bishop Goold's Residence and Don Kennedy's
Residence, undated. Source Ko and Wu "Convent of Mercy...
Fitzroy" 1968 p5. 155
29. Fitzroy From the Exhibition Building 1880 showing the Convent
of Mercy. LaTrobe Collection. State Library of Victoria. 155
30. Victoria Buildings, 193-207 Smith Street, 1896. Source
Leader Supp February 8th 1896 P2. 162
31. Victoria Buildings, Original Elevation, 1888 Source:
Australian Builder and Contractors News 22.9.1888. 163
32. Former Union Bank of Australia 165-167 Smith Street c1905.
Photo held at ANZ Bank Archives in Album "VH3-1 Photographs
and Plans of Old Premises, Union Bank c1905". 165
33. National Bank, 171 Smith Street 1965. Photo held at
National Bank Premises Department. 167
34. Robert Harrison's Cordial Manufactory, Spring Street 1888
(now 8 Spring Street) Source: A. Sutherland (ed) *Victoria
and Its Metropolis* Vol 2 p672. 169